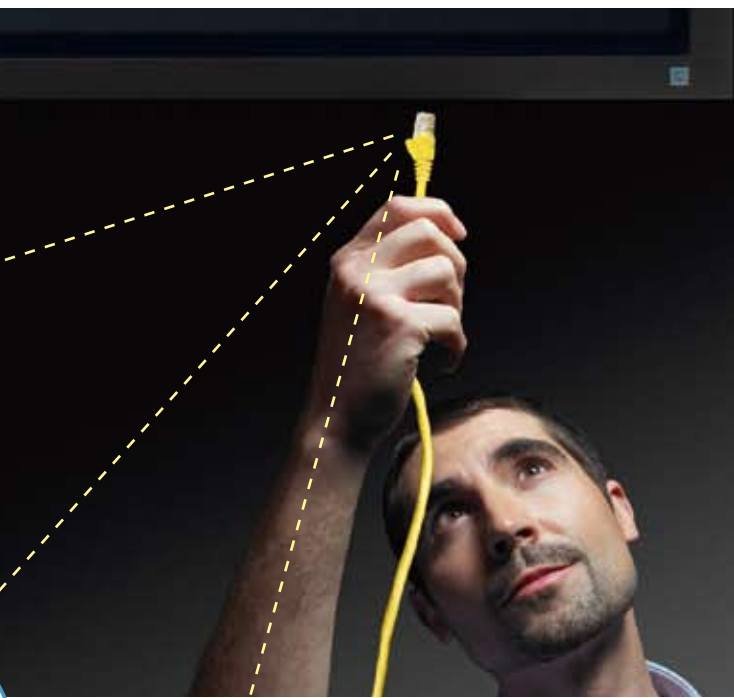
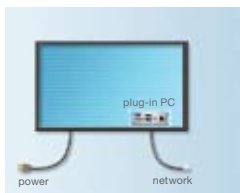


HEALTHCARE

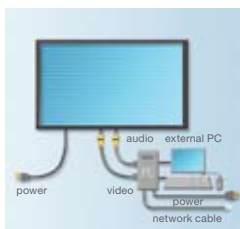
The Digital Signage Network so simple,  
plugging it in may be the hardest part.



Integrated on-board  
plug-in PC offers full  
functionality with  
no messy cables.



Typical competitor  
digital signage  
requires extra  
cables, equipment  
and creates clutter.



Panasonic Professional Plasmas and Dynasign Online deliver the only true integrated, all-in-one solution that lets you deploy, manage and grow your digital signage networks. Whether it's waiting rooms, hospitals or extended care facilities, this system will enhance communication with visitors, patients and staff.

Sign up now for a **FREE 30-day software trial** at [dynasign.net](http://dynasign.net)



**Panasonic ideas for life**

HEALTHCARE

# Panasonic & Dynasign Digital Signage Package



## Featuring Panasonic Pro Plasmas and plug-in PC boards running Dynasign Player software with **free 30-day trial\***.

Panasonic Professional Plasmas offer an ultra-wide viewing angle, ensuring that images look great from anywhere in the room. All plasma screens also feature hard-wearing, scratch-resistant protective glass.

### Feature Highlights:

- Ready-to-deploy 42" to 103" all-in-one solution with slide-in media player module for easy install/maintenance
- Supports multi-screen configuration for interactive facility directory, patient waiting room, cafeteria menu board, bulletin board and lobby video wall
- Flexible screen layout with multi-zones for video, image, Flash, ticker and live feed templates for displaying RSS/XML, TV channel, text messaging, weather, news and third-party sources such as hospital event management, cafeteria catering, emergency alerts and more
- Web-based remote content management interface with customizable hierarchical content channels and advanced user access control for healthcare networks covering multiple locations to display broadcasting, departmental and location-relevant content
- Comprehensive remote screen management, including scheduled on/off, volume, brightness, multi-display configuration, and more
- Real-time system status monitoring, including media player status, system alert email and playback reports for ad content on targeted screens
- Scalable and all-inclusive Dynasign Online Service for flexible deployment schedules and lower TCO
- Supports wired, wireless and 3G mobile networks

### PACKAGE INCLUDES:

- Your choice of 42", 50", 58", 65" or 103" Panasonic Pro HD Plasmas with built-in multi-function slots that accept a wide variety of custom plug-in boards
- Panasonic plug-in PC board loaded with Dynasign Player licensed software and a free 30-day trial to the Dynasign Online remote content management platform
- Enhanced panel controls via integrated RS-232 managed remotely through Dynasign Online
- Optional touch screen for interactive applications such as way-finding and facility directory

\* Free 30-day trial only applies to Dynasign Online service. No hardware or equipment is included.

Visit [dynasign.net](http://dynasign.net), email [panasonic@dynasign.net](mailto:panasonic@dynasign.net) or call 1-510-405-5988



**Panasonic ideas for life**

[panasonic.com/proplasma](http://panasonic.com/proplasma)