

Panasonic®

ES 2207 P

Close Curves® WET/DRY ladies shaver

*For a close
comfortable shave*



Three Floating Heads



Pop up bikini
trimmer

Nickel free
**Hypo
Allergenic**
for sensitive skin

WET • DRY



Panasonic®

ES 2207 P

Close Curves®

WET/DRY ladies shaver

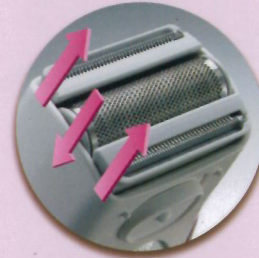


Fresh

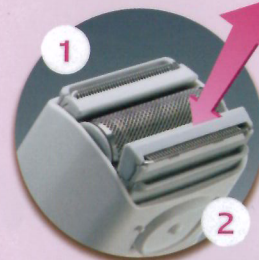
Smooth

Radiant

Silky Skin

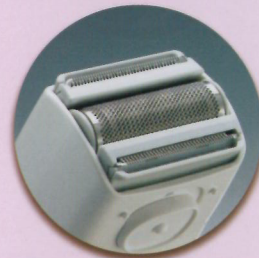


Three floating heads



Pop up trimmer for longer or stray hairs, 2 Trimmers

Move it Any Direction for Faster Shaving

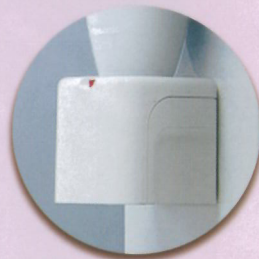


Triple Blade Shaving System, Ultra thin shaving foil and precision trimmers stay sharp and extremely durable for a clean shave.



Fully immersible for easy cleaning.

Safe to use in shower or tub.



Compact space saving charger.

Specifications



Power Source:	AC 100-120V
Charging Time:	8 hours
Shaves Per Charge:	Approx. 10 shaves(3 min./1 shave)
Dimensions:	5.9" (H) x 2.1" (W) x 1.8" (D)
Weight:	5.3 oz
Replacement Foil/Blade:	WES9769P(Combi)/ WES9775P(Foil)/WES9752P(Blade)
Accessories:	Travel pouch, AC recharger
UPC No.:	0 37988 56193 3
Unit/Master Carton:	3 unites
Individual Box Dimensions:	10.4" (H) x 6.9" (W) x 3.7" (D)
Individual Box Weight:	13.6 oz
Individual Box Cb. Ft.:	0.16
Master Carton Dimensions:	11.4" (H) x 11.3" (W) x 7.7" (D)
Master Carton Weight:	3.7 lbs
Master Carton Cb. Ft.:	0.57

Specifications subject to change without notice.

Panasonic

ideas for life

Panasonic Consumer Electronics Company

Division of Panasonic Corporation of North America

One Panasonic Way 1H-1, Secaucus, NJ 07094
www.panasonic.com

For Regional Location

www.panasonic.com/pceoffices
Customer service: 1-800-338-0552

