

## Basic Operating Instructions

### Blu-ray Disc™ Player

Model No. DMP-BDT270

DMP-BDT170

DMP-BDT166

DMP-BDT165

DMP-BD83

DMP-BD73

### Firmware updates

Panasonic is constantly improving the unit's firmware to ensure that our customers are enjoying the latest technology. Panasonic recommends updating your firmware as soon as you are notified. For details, refer to the back side of this leaflet.

Model number suffix "EB" denotes UK model.

EB GN GA GC GJ

SQT0703-1  
F1214WY1025

Thank you for purchasing this product.

Please read these instructions carefully before using this product, and save this manual for future use.

A more detailed operating instructions is available in "Operating Instructions (PDF format)". To read it, download it from the website.

<http://av.jpn.support.panasonic.com/support/global/cs/bd/oi/index.html>



You will need Adobe Reader to browse or print the Operating instructions (PDF format).

You can download and install a version of Adobe Reader that you can use with your OS from the following website. (As of December 2014)

<http://www.adobe.com/products/acrobat/readstep2.html>

## Accessories

Check the supplied accessories before using this unit.

### 1 Remote control

BDT270

For the United Kingdom and Ireland

(N2QAYB001031)

For the Middle East

(N2QAYB000959)

BDT170

For the United Kingdom and Ireland

For Australia and New Zealand

(N2QAYB001030)

For the South East Asia

(N2QAYB001033)

BDT166/165 BD83

For the United Kingdom and Ireland

For Australia and New Zealand

(N2QAYB001029)

For the Middle East and South East Asia

(N2QAYB000958)

BD73

For the Middle East

(N2QAYB000987)

### 2 Batteries for remote control

BDT270 BDT170

For the United Kingdom and Ireland

(K2CT2CA00007)

For Australia and New Zealand

(K2CJ2DA00014)

BDT270 BDT170 BDT165 BD73

For the Middle East and South East Asia\*

BDT166/165 BD83 BD73

### 1 AC adaptor

For the United Kingdom and Ireland

(SAE0003)

For Australia and New Zealand

(SAE0004)

For the South East Asia

(SAE0002)

For the Middle East and Thailand\*

Except the United Kingdom and Ireland

Except BD73

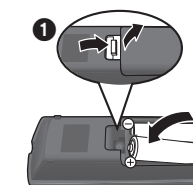
### 1 HDMI Cable



- Product numbers are provided in these operating instructions correct as of December 2014. These may be subject to change.
- Do not use AC mains lead and AC adaptor with other equipment.
- Do not use any other AC mains lead and AC adaptors except the supplied one.

\* See "STEP 1: Connecting to a TV" for more information.

### Using the remote control

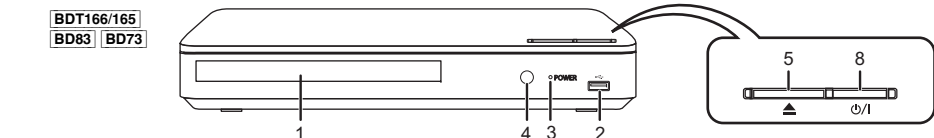
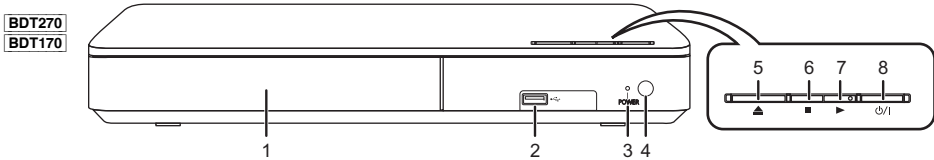


R6/LR6, AA

(Alkaline or manganese batteries)

- Insert the batteries to the terminal so that it (+ and -) matches those in the remote control.

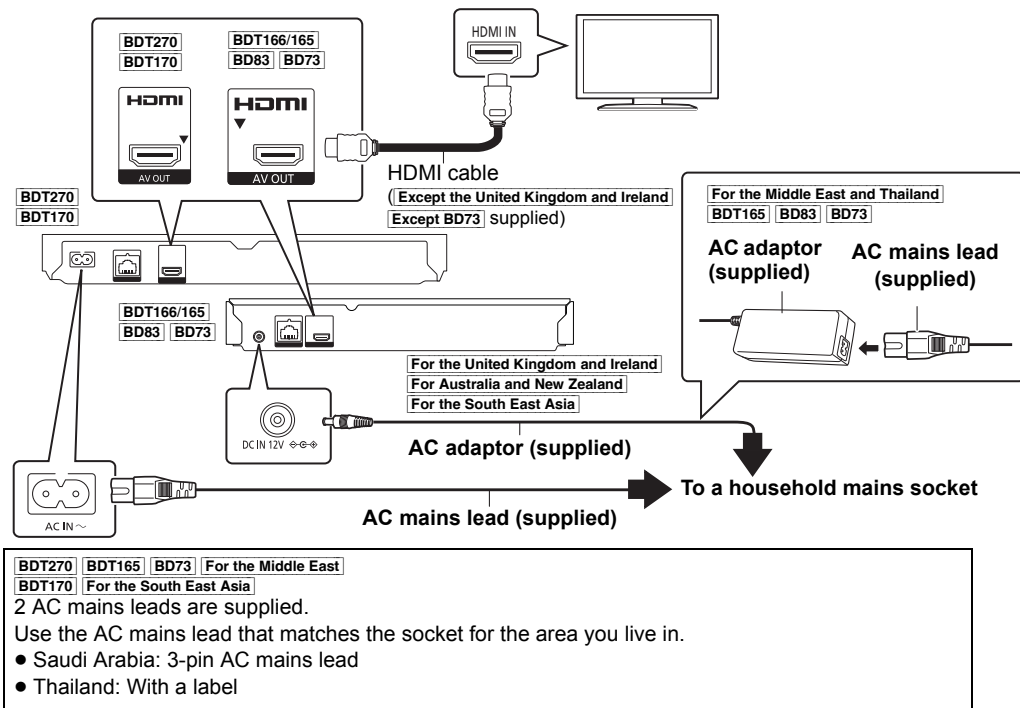
- Turn the unit on and off
- TV operation buttons  
You can operate the Panasonic TV using this unit's remote control. Some buttons may not work depending on the TV.  
[TV] : Turn the TV on and off  
[AV] : Change input  
[+ - VOL] : Adjust the volume
- Select title numbers, etc./Enter numbers or BDT270 BDT170 characters
- Cancel
- Change soundtrack
- Basic playback control buttons
- For the United Kingdom and Ireland  
For Australia and New Zealand  
Show Pop-up menu  
For the Middle East and South East Asia  
Show USB Sharing menu
- Show Top menu
- Show Option menu
- Coloured buttons (red, green, yellow, blue)  
Used for various purposes depending on the display.
- Transmit the remote control signal
- Open or close the disc tray
- Show the status messages
- BDT270  
Show Miracast™ screen  
BDT170 BDT166/165 BD83 BD73  
Switch Secondary Video on/off (Picture-in-picture)
- Except BD73  
Show the Home Screen of Network Service  
BD73  
Show Setup menu
- Exit the Menu screen
- For the United Kingdom and Ireland  
For Australia and New Zealand  
Show Netflix screen  
For the Middle East and South East Asia  
Show Pop-up menu
- Show HOME menu
- [▲, ▼, ◀, ▶] : Move the highlight for selection  
[OK] : Confirm the selection  
[II] : Frame-by-frame
- Return to previous screen



- Disc tray
- USB port
- POWER LED  
The LED lights when the unit is turned on, and flashes when error occurs.
- Remote control signal sensor  
Distance: Within approx. 7 m  
Angle: Approx. 20° up and down, 30° left and right
- Open or close the disc tray
- BDT270 BDT170  
Stop
- BDT270 BDT170  
Start play
- Standby/on switch (⏻)  
Press to switch the unit from on to standby mode or vice versa. In standby mode, the unit is still consuming a small amount of power.

## Quick Start Guide

### STEP 1 : Connecting to a TV



- This unit consumes a small amount of AC power (⚡ "Specifications") even when turned off in standby mode. For the purpose of energy conservation, the unit should be disconnected if you will not be using it for extended period of time.
- BDT166/165 BD83 BD73 The unit is in the standby condition when the AC adaptor is connected. The primary circuit is always "live" as long as the AC adaptor is connected to an electrical outlet.

### Caution for AC Mains Lead

#### (For the AC mains plug of three pins)

For your safety, please read the following text carefully.

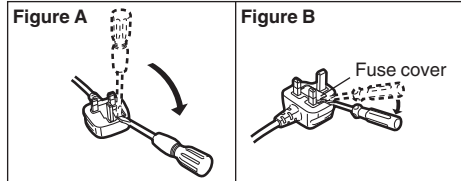
This appliance is supplied with a moulded three pin mains plug for your safety and convenience.  
A 5-ampere fuse is fitted in this plug.  
Should the fuse need to be replaced please ensure that the replacement fuse has a rating of 5-ampere and that it is approved by ASTA or BSI to BS1362.  
Check for the ASTA mark ⚡ or the BSI mark ⚡ on the body of the fuse.  
If the plug contains a removable fuse cover you must ensure that it is refitted when the fuse is replaced.  
If you lose the fuse cover the plug must not be used until a replacement cover is obtained.  
A replacement fuse cover can be purchased from your local dealer.

**Before use**  
Remove the connector cover.

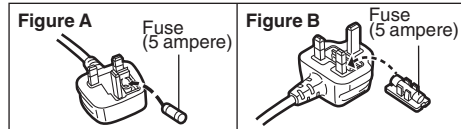
#### How to replace the fuse

The location of the fuse differ according to the type of AC mains plug (figures A and B). Confirm the AC mains plug fitted and follow the instructions below.  
Illustrations may differ from actual AC mains plug.

1. Open the fuse cover with a screwdriver.



2. Replace the fuse and close or attach the fuse cover.



## STEP 2 : Connecting to the network

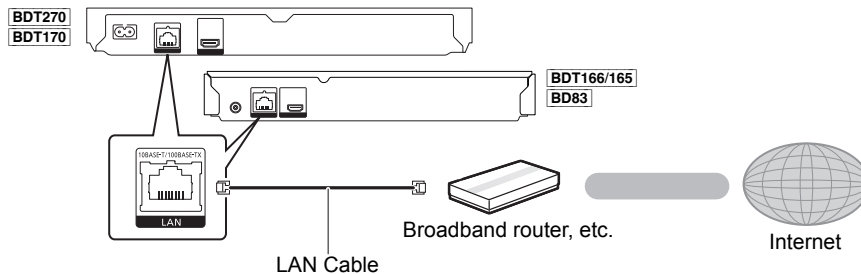
BDT270

### ■ Wireless LAN connection



Except BD73

### ■ LAN cable connection



Use category 5 or above straight LAN cables (STP) when connecting to peripheral devices.

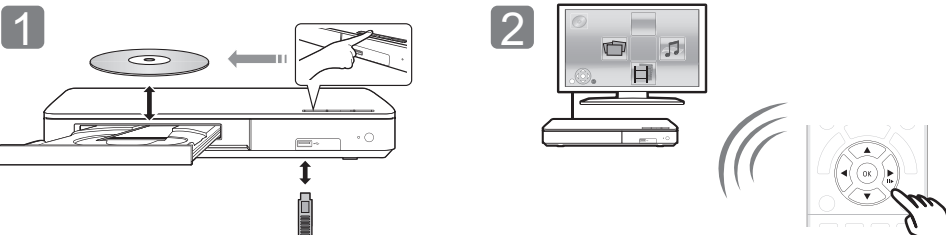
## STEP 3 : Settings



Turn on the TV and select the appropriate video input.

Press [⏻].  
Follow the on-screen instructions to continue with the settings.

## STEP 4 : Playback



Insert the media.

Press [OK] or [▲, ▼, ◀, ▶] to select the item.  
• If there are any other items, repeat this step.

## Operating during playback

Following functions may not work depending on the media and contents.

Stop	Press [■STOP].	The stopping point is memorized. <b>Resume play function</b> Press [▶PLAY] to restart from this point. • The point is cleared if the media is removed.
Pause	Press [II PAUSE].	Press [II PAUSE] again or [▶PLAY] to restart play.
Search	While playing, press [SEARCH◀◀] or [SEARCH▶▶].	The speed increases up to 5 steps. • Press [▶PLAY] to revert to normal playback speed.
Slow motion	While paused, press [SEARCH▶▶].	
Skip	While playing or paused, press [◀◀] or [▶▶].	Skip to the title, chapter or track.

## Playable media

**BD-Video:** Video

**BD-RE:** Video, JPEG, MPO\*, AAC, ALAC, DSD\*, FLAC, MP3, WAV, WMA

**BD-R:** Video, MKV, Xvid, AAC, ALAC, DSD\*, FLAC, MP3, WAV, WMA

**DVD-Video:** Video

**DVD-R/DVD-R DL :** Video, AVCHD, MKV, Xvid, JPEG, MPO\*, AAC, ALAC, DSD\*, FLAC, MP3, WAV, WMA

**DVD-RW/+R/+RW/+R DL :** Video, AVCHD

**Music CD :** Music [CD-DA]

**CD-R/CD-RW :** MKV, Xvid, JPEG, MPO\*, AAC, ALAC, FLAC, MP3, Music [CD-DA], WAV, WMA

**USB devices (up to 4 TB) :** MKV, MP4, MPEG2, Xvid, JPEG, MPO\*, AAC, ALAC, DSD\*, FLAC, MP3, WAV, WMA

### ■ Region management information

The unit can play back BD-Video/DVD-Video discs of the following regions codes, including "ALL":  
Example: BD-Video DVD-Video

For the United Kingdom and Ireland For the Middle East



For Australia and New Zealand



For the South East Asia

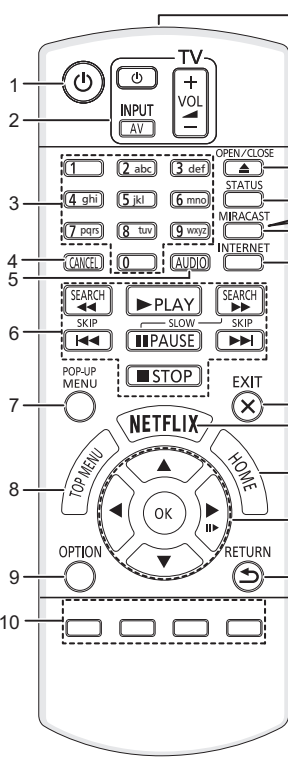


\* BDT270 BDT170 BDT166/165 only

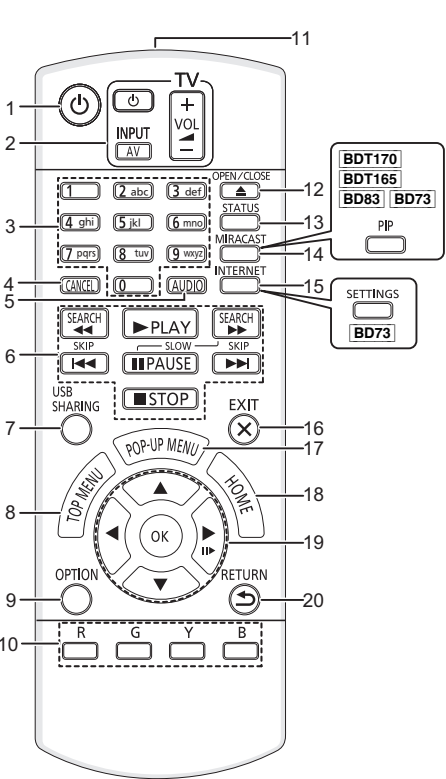
## Control reference guide

When other Panasonic devices respond to the remote control of the unit, change the remote control code.

For the United Kingdom and Ireland  
For Australia and New Zealand



For the Middle East and South East Asia



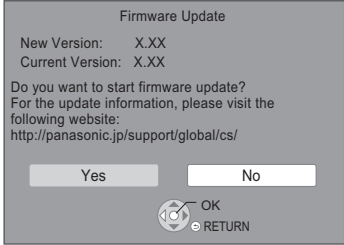


## Firmware updates

Occasionally, Panasonic may release updated firmware for this unit that may add or improve the way a feature operates. These updates are available free of charge.

**[Except BD73]**

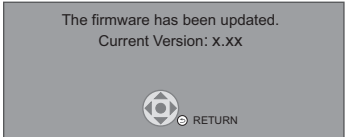
This unit is capable of checking the firmware automatically when connected to the Internet via a broadband connection. When a new firmware version is available, the following message is displayed.



You can also download the latest firmware from the following website and store it to a USB device to update the firmware.  
<http://panasonic.jp/support/global/cs/>  
(This site is in English only.)

DO NOT DISCONNECT the unit from the AC power or perform any operation while the update takes place.  
After the firmware is installed, unit will restart and the following screen will be displayed.

e.g.,



- **To show the firmware version on this unit;**  
**[Except BD73]**  
[HOME] ⇨ [Setup] ⇨ "Player Settings" ⇨ "System" ⇨ "System Information" ⇨ "Firmware Version Information"  
**BD73** [SETTINGS] ⇨ "System" ⇨ "System Information" ⇨ "Firmware Version Information"
- **Downloading will require several minutes. It may take longer or may not work properly depending on the connection environment.**
- **[Except BD73]** If you do not want to check for the latest firmware version, set "Automatic Update Check" to "Off".  
[HOME] ⇨ "Setup" ⇨ "Player Settings" ⇨ "System" ⇨ "Firmware Update"

## Specifications

<b>Power supply</b>	<b>BDT270</b>   <b>BDT170</b> <b>[For the United Kingdom and Ireland]</b> <b>[For Australia and New Zealand]</b> <b>AC 220 to 240 V, 50 Hz</b> <b>[For the Middle East and South East Asia]</b> <b>AC 220 to 240 V, 50 Hz/60 Hz</b> <b>BDT166/165</b>   <b>BD83</b>   <b>BD73</b> <b>DC 12 V 0.8 A (DC IN terminal)</b>
<b>Power consumption*</b>	<b>BDT270</b>   <b>BDT170</b> <b>Approx. 13 W</b> <b>BDT166/165</b>   <b>BD83</b> <b>Approx. 11 W</b> <b>BD73</b> <b>Approx. 10 W</b>
<b>Power consumption in standby mode*</b>	<b>Approx. 0.5 W</b> (Quick Start: Off)
<b>[For the United Kingdom and Ireland]</b> <b>Power consumption in Network standby mode</b>	<b>BDT270</b>   <b>BDT170</b> <b>Approx. 5.5 W</b> <b>BDT166/165</b>   <b>BD83</b> <b>Approx. 3.5 W</b> (Quick Start: On)

<b>[For Australia and New Zealand]</b> <b>[For the Middle East and South East Asia]</b> <b>Power consumption in quick start standby mode*</b>	<b>BDT270</b>   <b>BDT170</b> <b>Approx. 5.5 W</b> <b>BDT165</b>   <b>BD83</b>   <b>BD73</b> <b>Approx. 3.5 W</b>
<b>Dimensions (W×H×D)</b>	<b>BDT270</b>   <b>BDT170</b> 312 mm×43 mm×180 mm <b>BDT166/165</b>   <b>BD83</b>   <b>BD73</b> 245 mm×38.5 mm×175 mm
<b>Mass</b>	<b>BDT270</b>   <b>BDT170</b> Approx. 1.0 kg <b>BDT166/165</b>   <b>BD83</b>   <b>BD73</b> Approx. 0.8 kg
<b>[For the Middle East and Thailand]</b> * <b>BDT165</b>   <b>BD83</b>   <b>BD73</b> Using supplied AC adaptor	
• Specifications are subject to change without notice.	

## Precautions

### WARNING

#### Batteries

- To reduce the risk of fire, electric shock or product damage,
- Do not expose this unit to rain, moisture, dripping or splashing.
- Do not place objects filled with liquids, such as vases, on this unit.
- Use only the recommended accessories.
- Do not remove covers.
- Do not repair this unit by yourself. Refer servicing to qualified service personnel.
- Do not let metal objects fall inside this unit.
- Do not place heavy items on this unit.

#### AC mains lead

- To reduce the risk of fire, electric shock or product damage,
- Ensure that the power supply voltage corresponds to the voltage printed on this unit.
- Insert the mains plug fully into the socket outlet.
- Do not pull, bend, or place heavy items on the lead.
- Do not handle the plug with wet hands.
- Hold onto the mains plug body when disconnecting the plug.
- Do not use a damaged mains plug or socket outlet.

The mains plug is the disconnecting device.  
Install this unit so that the mains plug can be unplugged from the socket outlet immediately.

### CAUTION

#### Batteries

- This unit utilizes a laser. Use of controls or adjustments or performance of procedures other than those specified herein may result in hazardous radiation exposure.
- Do not place sources of naked flames, such as lighted candles, on this unit.
- This unit may receive radio interference caused by mobile telephones during use. If such interference occurs, please increase separation between this unit and the mobile telephone.

**[For the United Kingdom, Ireland, Australia and New Zealand]**

- This unit is intended for use in moderate climates.

**[For the Middle East and South East Asia]**

- This unit is intended for use in tropical climates.

#### Placement

Place this unit on an even surface.

- To reduce the risk of fire, electric shock or product damage,
- Do not install or place this unit in a bookcase, built-in cabinet or in another confined space. Ensure this unit is well ventilated.
- Do not obstruct this unit's ventilation openings with newspapers, tablecloths, curtains, and similar items.
- Do not place the unit on amplifiers/receivers or equipment that may become hot. The heat can damage the unit.
- Do not expose this unit to direct sunlight, high temperatures, high humidity, and excessive vibration.

#### Batteries

- Mishandling of batteries can cause electrolyte leakage and may cause a fire.
- Danger of explosion if battery is incorrectly replaced. Replace only with the type recommended by the manufacturer.
- When disposing of the batteries, please contact your local authorities or dealer and ask for the correct method of disposal.
- Do not mix old and new batteries or different types at the same time.
- Do not heat or expose to flame.
- Do not leave the battery(ies) in a car exposed to direct sunlight for a long period of time with doors and windows closed.
- Do not take apart or short circuit.
- Do not recharge alkaline or manganese batteries.
- Do not use batteries if the covering has been peeled off.

Remove batteries if you do not intend to use the remote control for a long period of time. Store in a cool, dark place.

**BDT166/165** | **BD83** | **BD73**

#### AC adaptor

The AC adaptor operates on AC between 110 V and 240 V. But obtain a suitable plug adaptor if the plug does not fit the AC mains socket.

## To dispose or transfer this unit

The unit may keep the user settings information in the unit. If you discard this unit either by disposal or transfer, then follow the procedure to return all the settings to the factory presets to delete the user settings.

- ① Turn the unit on.
  - ② Press and hold [OK], the yellow button and the blue button on the remote control at the same time for more than 5 seconds.
    - POWER LED starts to flash, and "00 RET" is displayed on the screen.
  - ③ Press [▶|◀] (rightly) repeatedly on the remote control until "08 FIN" is displayed on the screen.
  - ④ Press and hold [OK] for more than 5 seconds.
- The operation history may be recorded in the memory of this unit.

## Disposal of Old Equipment and Batteries Only for European Union and countries with recycling symbols



These symbols on the products, packaging, and/or accompanying documents mean that used electrical and electronic products and batteries must not be mixed with general household waste.

For proper treatment, recovery and recycling of old products and used batteries, please take them to applicable collection points in accordance with your national legislation.  
By disposing of them correctly, you will help to save valuable resources and prevent any potential negative effects on human health and the environment.  
For more information about collection and recycling, please contact your local municipality.  
Penalties may be applicable for incorrect disposal of this waste, in accordance with national legislation.

### Note for the battery symbol (bottom symbol):

This symbol might be used in combination with a chemical symbol. In this case it complies with the requirement set by the Directive for the chemical involved.

## Copyrights and Trademarks

This product uses Cinavia technology to limit the use of unauthorized copies of some commercially-produced film and videos and their soundtracks. For details, refer to the operating instructions (PDF format).

"AVCHD" is a trademark of Panasonic Corporation and Sony Corporation.

Java is a registered trademark of Oracle and/or its affiliates.

Manufactured under license from Dolby Laboratories.  
Dolby and the double-D symbol are trademarks of Dolby Laboratories.

For DTS patents, see <http://patents.dts.com>. Manufactured under license from DTS Licensing Limited. DTS, DTS-HD, the Symbol, & DTS and the Symbol together are registered trademarks, and DTS-HD Master Audio is a trademark of DTS, Inc. © DTS, Inc. All Rights Reserved.

HDMI, the HDMI Logo, and High-Definition Multimedia Interface are trademarks or registered trademarks of HDMI Licensing LLC in the United States and other countries.

This product is licensed under the AVC patent portfolio license and VC-1 patent portfolio license for the personal and non-commercial use of a consumer to (i) encode video in compliance with the AVC Standard and VC-1 Standard ("AVC/VC-1 Video") and/or (ii) decode AVC/VC-1 Video that was encoded by a consumer engaged in a personal and non-commercial activity and/or was obtained from a video provider licensed to provide AVC/VC-1 Video. No license is granted or shall be implied for any other use. Additional information may be obtained from MPEG LA, LLC. See <http://www.mpegla.com>.

MPEG Layer-3 audio coding technology licensed from Fraunhofer IIS and Thomson.

"DVD Logo" is a trademark of DVD Format/Logo Licensing Corporation.

The Wi-Fi CERTIFIED™ Logo is a certification mark of Wi-Fi Alliance®. The Wi-Fi Protected Setup™ Identifier mark is a certification mark of Wi-Fi Alliance®.

"Wi-Fi"® and "Wi-Fi Direct"® are registered trademarks of Wi-Fi Alliance®.  
"Wi-Fi Protected Setup™", "Miracast™", "WPA™", and "WPA2™" are trademarks of Wi-Fi Alliance®.

DLNA, the DLNA Logo and DLNA CERTIFIED are trademarks, service marks, or certification marks of the Digital Living Network Alliance.

Windows is a trademark or a registered trademark of Microsoft Corporation in the United States and other countries.

Android is a trademark of Google Inc.

Copyright 2004-2014 Verance Corporation. Cinavia™ is a Verance Corporation trademark. Protected by U.S. Patent 7,369,677 and worldwide patents issued and pending under license from Verance Corporation. All rights reserved.

This product incorporates the following software:

- (1) the software developed independently by or for Panasonic Corporation,
- (2) the software owned by third party and licensed to Panasonic Corporation,
- (3) the software licensed under the GNU General Public License, Version 2.0 (GPL V2.0),
- (4) the software licensed under the GNU LESSER General Public License, Version 2.1 (LGPL V2.1), and/or
- (5) open source software other than the software licensed under the GPL V2.0 and/or LGPL V2.1.

The software categorized as (3) - (5) are distributed in the hope that it will be useful, but WITHOUT ANY WARRANTY, without even the implied warranty of MERCHANTABILITY or FITNESS FOR A PARTICULAR PURPOSE. Please refer to the detailed terms and conditions thereof shown in the Player Settings menu.

At least three (3) years from delivery of this product, Panasonic will give to any third party who contacts us at the contact information provided below, for a charge no more than our cost of physically performing source code distribution, a complete machine-readable copy of the corresponding source code covered under GPL V2.0, LGPL V2.1 or the other licenses with the obligation to do so, as well as the respective copyright notice thereof.  
Contact Information: [oss-cd-request@gg.jp.panasonic.com](mailto:oss-cd-request@gg.jp.panasonic.com)

The source code and the copyright notice are also available for free in our website below.  
<http://panasonic.net/avc/loss/>

David M. Gay's dtoa and strtod license

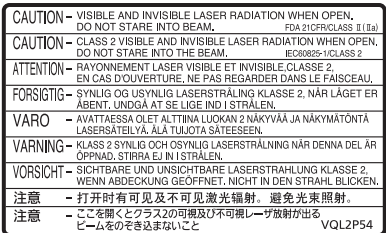
The author of this software is David M. Gay.

Copyright (c) 1991, 2000, 2001 by Lucent Technologies.

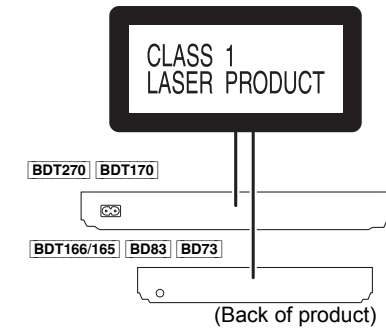
Permission to use, copy, modify, and distribute this software for any purpose without fee is hereby granted, provided that this entire notice is included in all copies of any software which is or includes a copy or modification of this software and in all copies of the supporting documentation for such software.

THIS SOFTWARE IS BEING PROVIDED "AS IS", WITHOUT ANY EXPRESS OR IMPLIED WARRANTY. IN PARTICULAR, NEITHER THE AUTHOR NOR LUCENT MAKES ANY REPRESENTATION OR WARRANTY OF ANY KIND CONCERNING THE MERCHANTABILITY OF THIS SOFTWARE OR ITS FITNESS FOR ANY PARTICULAR PURPOSE.

\*UNICODE, INC. LICENSE AGREEMENT - DATA FILES AND SOFTWARE



(Inside of product)



(Back of product)

Unicode Data Files include all data files under the directories <http://www.unicode.org/Public/>, <http://www.unicode.org/reports/>, and <http://www.unicode.org/cldr/data/>. Unicode Software includes any source code published in the Unicode Standard or under the directories <http://www.unicode.org/Public/>, <http://www.unicode.org/reports/>, and <http://www.unicode.org/cldr/data/>.

NOTICE TO USER: Carefully read the following legal agreement. BY DOWNLOADING, INSTALLING, COPYING OR OTHERWISE USING UNICODE INC.'S DATA FILES ("DATA FILES"), AND/OR SOFTWARE ("SOFTWARE"), YOU UNEQUIVOCALLY ACCEPT, AND AGREE TO BE BOUND BY, ALL THE TERMS AND CONDITIONS OF THIS AGREEMENT. IF YOU DO NOT AGREE, DO NOT DOWNLOAD, INSTALL, COPY, DISTRIBUTE OR USE THE DATA FILES OR SOFTWARE.

#### COPYRIGHT AND PERMISSION NOTICE

Copyright (c) 1991-2009 Unicode, Inc. All rights reserved. Distributed under the Terms of Use in <http://www.unicode.org/copyright.html>.

Permission is hereby granted, free of charge, to any person obtaining a copy of the Unicode data files and any associated documentation (the "Data Files") or Unicode software and any associated documentation (the "Software") to deal in the Data Files or Software without restriction, including without limitation the rights to use, copy, modify, merge, publish, distribute, and/or sell copies of the Data Files or Software, and to permit persons to whom the Data Files or Software are furnished to do so, provided that (a) the above copyright notice(s) and this permission notice appear with all copies of the Data Files or Software, (b) both the above copyright notice(s) and this permission notice appear in associated documentation, and (c) there is clear notice in each modified Data File or in the Software as well as in the documentation associated with the Data File(s) or Software that the data or software has been modified.

THE DATA FILES AND SOFTWARE ARE PROVIDED "AS IS", WITHOUT WARRANTY OF ANY KIND, EXPRESS OR IMPLIED, INCLUDING BUT NOT LIMITED TO THE WARRANTIES OF MERCHANTABILITY, FITNESS FOR A PARTICULAR PURPOSE AND NONINFRINGEMENT OF THIRD PARTY RIGHTS. IN NO EVENT SHALL THE COPYRIGHT HOLDER OR HOLDERS INCLUDED IN THIS NOTICE BE LIABLE FOR ANY CLAIM, OR ANY SPECIAL INDIRECT OR CONSEQUENTIAL DAMAGES, OR ANY DAMAGES WHATSOEVER RESULTING FROM LOSS OF USE, DATA OR PROFITS, WHETHER IN AN ACTION OF CONTRACT, NEGLIGENCE OR OTHER TORTIOUS ACTION, ARISING OUT OF OR IN CONNECTION WITH THE USE OR PERFORMANCE OF THE DATA FILES OR SOFTWARE.

Except as contained in this notice, the name of a copyright holder shall not be used in advertising or otherwise to promote the sale, use or other dealings in these Data Files or Software without prior written authorization of the copyright holder."

(1) MS/WMA

This product is protected by certain intellectual property rights of Microsoft Corporation and third parties. Use or distribution of such technology outside of this product is prohibited without a license from Microsoft or an authorized Microsoft subsidiary and third parties.

**[Except BD73]**

(2) MS/PlayReady/Final Product Labeling

This product contains technology subject to certain intellectual property rights of Microsoft. Use or distribution of this technology outside of this product is prohibited without the appropriate license(s) from Microsoft.

**[Except BD73]**

(3) MS/PlayReady/End User Notices

Content owners use Microsoft PlayReady™ content access technology to protect their intellectual property, including copyrighted content. This device uses PlayReady technology to access PlayReady-protected content and/or WMDRM-protected content. If the device fails to properly enforce restrictions on content usage, content owners may require Microsoft to revoke the device's ability to consume PlayReady-protected content. Revocation should not affect unprotected content or content protected by other content access technologies. Content owners may require you to upgrade PlayReady to access their content. If you decline an upgrade, you will not be able to access content that requires the upgrade.

(4) FLAC, WPA Suppliment

The software licenses are displayed when "Software Licence" in the Setup menu is selected.\*

\* **[Except BD73]**

[HOME] ⇨ "Setup" ⇨ "Player Settings" ⇨ "System" ⇨ "System Information"

**BD73**

[SETTINGS] ⇨ "System" ⇨ "System Information"

## Limited Warranty (ONLY FOR AUSTRALIA)

### Panasonic Warranty

1. The product is warranted for 12 months from the date of purchase. Subject to the conditions of this warranty Panasonic or its Authorised Service Centre will perform necessary service on the product without charge for parts or labour, if in the opinion of Panasonic, the product is found to be faulty within the warranty period.
2. This warranty only applies to Panasonic products purchased in Australia and sold by Panasonic Australia or its Authorised Distributors or Dealers and only where the products are used and serviced within Australia or it's territories. Warranty cover only applies to service carried out by a Panasonic Authorised Service Centre and only if valid proof of purchase is presented when warranty service is requested.
3. This warranty only applies if the product has been installed and used in accordance with the manufacturer's recommendations (as noted in the operating instructions) under normal use and reasonable care (in the opinion of Panasonic). The warranty covers normal domestic use only and does not cover damage, malfunction or failure resulting from use of incorrect voltages, incorrect installation, accident, misuse, neglect, build-up of dirt or dust, abuse, maladjustment of customer controls, mains supply problems, thunderstorm activity, infestation by insects or vermin, tampering or repair by unauthorised persons (including unauthorised alterations), introduction of sand, humidity or liquids, commercial use such as hotel, office, restaurant, or other business or rental use of the product, exposure to abnormally corrosive conditions or any foreign object or matter having entered the product.
4. This warranty does not cover the following items unless the fault or defect existed at the time of purchase:
  - (a) Cabinet Part(s)
  - (b) Video or Audio Tapes
  - (c) SD cards or USB devices
  - (d) User replaceable Batteries
  - (e) DVD, Blu-ray or Recordable Discs
  - (f) Video / Audio Heads from wear and tear in normal use
  - (g) Information stored on Hard Disk Drive, USB stick or SD card
  - (h) DTV reception issues caused by TV Aerial / Cabling / Wall socket(s) etc
5. Some products may be supplied with Ethernet connection hardware. The warranty is limited on such products and will not cover
  - (a) Internet and or DLNA connection / setup related problems
  - (b) Access fees and or charges incurred for internet connection
  - (c) The use of incompatible software or software not specifically stipulated in the product operations manual; and
  - (d) Any indirect or consequential costs associated with the incorrect use or misuse of the hardware, its connection to the internet or any other device.
6. To claim warranty service, when required, you should:
  - Telephone Panasonic's Customer Care Centre on 132600 or visit our website referred to below and use the Service Centre Locator for the name/address of the nearest Authorised Service Centre.
  - Send or take the product to a Panasonic Authorised Service Centre together with your proof of purchase receipt as a proof of purchase date. Please note that freight and insurance to and / or from your nearest Authorised Service Centre must be arranged by you.
  - Note that home or pick-up/delivery service is available for the following products in the major metropolitan areas of Australia or the normal operating areas of the nearest Authorised Service Centres:
    - Plasma/LCD televisions / displays (screen size greater than 103 cm)
7. The warranties hereby conferred do not extend to, and exclude, any costs associated with the installation, de-installation or re-installation of a product, including costs related to the mounting, de-mounting or remounting of any screen, (and any other ancillary activities), delivery, handling, freighting, transportation or insurance of the product or any part thereof or replacement of and do not extend to, and exclude, any damage or loss occurring by reason of, during, associated with, or related to such installation, de-installation, re-installation or transit.

Panasonic Authorised Service Centres are located in major metropolitan areas and most regional centres of Australia, however, coverage will vary dependant on product. For advice on exact Authorised Service Centre locations for your product, please telephone our Customer Care Centre on 132600 or visit our website and use the Service Centre Locator.

In addition to your rights under this warranty, Panasonic products come with consumer guarantees that cannot be excluded under the Australian Consumer Law. If there is a major failure with the product, you can reject the product and elect to have a refund or to have the product replaced or if you wish you may elect to keep the goods and be compensated for the drop in value of the goods. You are also entitled to have the product repaired or replaced if the product fails to be of acceptable quality and the failure does not amount to a major failure.

If there is a major failure in regard to the product which cannot be remedied then you must notify us within a reasonable period by contacting the Panasonic Customer Care Centre. If the failure in the product is not a major failure then Panasonic may choose to repair or replace the product and will do so in a reasonable period of time from receiving notice from you.

THIS WARRANTY CARD AND THE PURCHASE DOCKET (OR SIMILAR PROOF OF PURCHASE)  
SHOULD BE RETAINED BY THE CUSTOMER AT ALL TIMES

If you require assistance regarding warranty conditions or any other enquiries, please visit the **Panasonic Australia** website [www.panasonic.com.au](http://www.panasonic.com.au) or contact by phone on **132 600**  
*If phoning in, please ensure you have your operating instructions available.*

### Panasonic Australia Pty. Limited

ACN 001 592 187 ABN 83 001 592 187

1 Innovation Road, Macquarie Park NSW 2113

PRO-031-F11 Issue: 4.0

01-01-2011

**[For the United Kingdom and Ireland customers]**

## Sales and Support Information

### Customer Communications Centre

- For customers within the UK: 0844 844 3899
- For customers within Ireland: 01 289 8333
- Monday–Friday 9:00 am – 5:00 pm (Excluding public holidays).
- For further support on your product, please visit our website: [www.panasonic.co.uk](http://www.panasonic.co.uk)

### Direct Sales at Panasonic UK

- Order accessory and consumable items for your product with ease and confidence by phoning our Customer Communications Centre Monday–Friday 9:00 am – 5:00 pm (Excluding public holidays).
- Or go on line through our Internet Accessory ordering application at [www.pas-europe.com](http://www.pas-europe.com).
- Most major credit and debit cards accepted.
- All enquiries transactions and distribution facilities are provided directly by Panasonic UK.
- It couldn't be simpler!
- Also available through our Internet is direct shopping for a wide range of finished products. Take a browse on our website for further details.

Manufactured by: Panasonic Corporation  
Kadoma, Osaka, Japan  
Importer for Europe: Panasonic Marketing Europe GmbH  
Panasonic Testing Centre  
Winsberg 15, 22525 Hamburg, Germany



Panasonic Corporation  
Web Site: <http://panasonic.net>

© Panasonic Corporation 2014

(En)