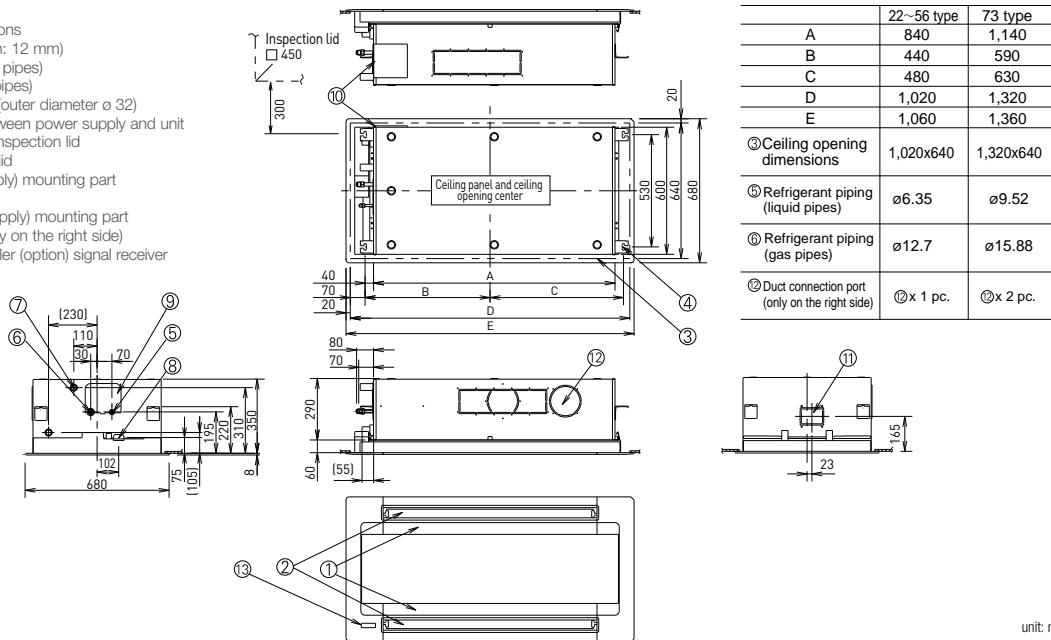


## L1 TYPE 2-WAY CASSETTE Dimensions

- 1 Air intake
- 2 Air outlet
- 3 Ceiling opening dimensions
- 4 Suspension fitting (notch: 12 mm)
- 5 Refrigerant piping (liquid pipes)
- 6 Refrigerant piping (gas pipes)
- 7 Drain connection VP25 (outer diameter  $\phi$  32)
- 8 Inlet for option cord between power supply and unit
- 9 Drain pan, drain pump inspection lid
- 10 Drain pump inspection lid
- 11 Round flange (field supply) mounting part (fresh air inlet  $\phi$  125)
- 12 Discharge duct (field supply) mounting part (installation possible only on the right side)
- 13 Wireless remote controller (option) signal receiver installation part



unit: mm