

Line up					
Model	KX-MB1536CXB(Black) KX-MB1536CXW(White)	KX-MB1530CXB(Black) KX-MB1530CXW(White)	KX-MB1520CXB(Black) KX-MB1520CXW(White) KX-MB1520CXD(Black&White)	KX-MB1510CXB(Black) KX-MB1510CXW(White)	KX-MB1500CXB(Black) KX-MB1500CXW(White) KX-MB1500CXD(Black&White)
Copy	✓	✓	✓	✓	✓
Print	✓	✓	✓	✓	✓
Scan	✓	✓	✓	✓	✓
Fax	✓	✓	✓	—	—
Network	✓	—	—	—	—
Automatic Document Feeder	✓	✓	—	✓	—
Digital Speakerphone	✓	✓	✓	—	—

Specifications				
General				
Printing Process	Laser			
Recording Paper Size	A4 / Letter / Legal *1 / B5(JIS) *1 / B5(ISO) *1 / 16K / 216 mm x 330 mm *1 / 216 mm x 340 mm *1 / Custom [210-216 mm x 279-356 mm] *1 *2			
Recording Paper Capacity	150 sheets + 1 sheet manual tray			
Automatic Document Feeder	Yes (15 sheets)	No	Yes (15 sheets)	No
Document Size	A4 / Letter / Legal *3 / B5(JIS) / B5 (ISO) / 16K / 216 mm x 330 mm *3 / 216 mm x 340 mm *3			
LCD Display	16 digits / 2 lines			
Memory Size	32 MB			
Printer				
Print Speed	Up to 18 ppm (A4)			
Print Resolution	600 x 600 dpi			
Emulation	GDI			
Supported OS	Microsoft® Windows® 2000 / Windows® XP / Windows Vista® / Windows® 7, Mac OS X 10.5-10.8 *4*6, Linux® *5*6			
Copier				
Copy Speed *7	Up to 18 cpm (A4)			
Copy Resolution	Up to 600 x 600 dpi			
Multi-Copy	99 pages			
Reduction / Enlargement	25 % - 400 % [1 % step]			
Copy Function	Quick ID, N-in-1, Separate N-in-1, Poster, Image Repeat, Edge/Margin			
Scanner				
Colour / Mono Scan	Yes / Yes			
Scan Resolution	Up to 600 x 1200 dpi [Optical] / Up to 19200 x 19200 dpi [Interpolated]			
Scan Function	Scan to PC / Email address / SMB / FTP	Scan to PC		
Supported OS	Microsoft® Windows® 2000 / Windows® XP / Windows Vista® / Windows® 7, Mac OS X 10.5-10.8 *4*6, Linux® *5*6			
Fax				
Modem Speed	33.6 kbps - 2.4 kbps with automatic fallback		No	
Memory Size	3.5 MB		No	
Phonebook	100		No	
Fax / Tel Switch	Yes (TEL mode and TEL/FAX mode are switchable.)		No	
Fax to Email	Yes (PDF only)	No		
Web Fax Preview	Yes	No		
Interface				
Local	Hi-Speed USB 2.0			
Network	10 Base-T / 100 Base-TX Ethernet Supported protocols:TCP/IP (IPv4, IPv6*8)	No		
Dimensions / Weight				
Dimensions (W x D x H)	391 mm x 360 mm x 242 mm	380 mm x 360 mm x 203 mm	391 mm x 360 mm x 242 mm	380 mm x 360 mm x 203 mm
Weight	Approx. 10 kg	Approx. 9 kg	Approx. 10 kg	Approx. 9 kg
Consumables				
All-in-One Toner Cartridge	KX-FAT410E [Prints about 2,500 pages *9] / KX-FAT390E [Prints about 1,500 pages *9]			

\*1 Manual input tray only. \*2 PC print only. \*3 Only on the KX-MB1536CX / KX-MB1530CX / KX-MB1510CX with Automatic Document Feeder. \*4 Mac OS X 10.8 Driver is provided via web download. \*5 Driver is provided via web download. Please visit <http://panasonic.net/pcc/support/fax/world.htm> for more information. \*6 The Mac OS and Linux versions of the software have limitations on some functions and features. \*7 Continuous copy of a single original. \*8 IPv6 protocol is available in the print function and on the Configuration Web Page for selecting features through the web browser interface. \*9 ISO/IEC 19752 standard.

#### Genuine Toner Cartridge

Panasonic genuine toner cartridges will help ensure optimal machine performance and image quality. The use of genuine consumables will help protect your investment and maximise machine life by avoiding potential issues with compatible products.



**Trademarks and registered trademarks**  
– Microsoft, Windows, Windows Vista, Excel and PowerPoint are either registered trademarks or trademarks of Microsoft Corporation in the United States and/or other countries.  
– Mac OS is a trademark of Apple Inc., registered in the U.S. and other countries.  
– Linux is the registered trademark of Linus Torvalds in the U.S. and other countries.  
– All other brand or product names are the property of their respective holders.

**Important**  
– Safety Precaution: carefully read the operating instructions before using this product.

- Dimensions and weights are approximate.
- Design and specifications are subject to change without notice.
- These products may be subject to export control regulations.

These products are designed to reduce hazardous chemical substances.

**Panasonic®**

Multi-Function Laser (All-in-One): <http://panasonic.net/pcc/products/aio/>

MG-MCCC002EN 1209NSP/FP-CX1

**Panasonic**  
ideas for life

Multi-Function Printer

KX-MB1536CX  
KX-MB1530CX  
KX-MB1520CX  
KX-MB1510CX  
KX-MB1500CX



## Smart All-in-One Machine

- ▶ Space Saving – Compact Body Size
- ▶ Energy Saving – Less than 1 Watt\*1 Power Consumption in Sleep Mode
- ▶ Easy to Use – Slanted Control Panel
- ▶ Multifunctional – Printer, Copier, Scanner and Fax\*2



18 ppm (A4)  
High speed  
Laser Printing



Fax to PC\*2 /  
Email\*3



33.6 kbps  
Super G3  
Fax Modem\*2



Colour Scan  
Capability



Scan to  
FTP server /  
SMB Folder  
(PDF, JPEG or TIFF)\*3



Digital  
Speakerphone\*2

\*1 For the KX-MB1536CX and KX-MB1510CX in stand-alone configuration or in USB connection.  
\*2 Except for the KX-MB1510CX / KX-MB1500CX.  
\*3 Only on the KX-MB1536CX with a LAN connection.



# Create Your Own Smart Small Office / Home Office

The Panasonic KX-MB1500 Series of multi-functional printers feature an extremely compact body that solves space problems in small offices and home offices. The handy slanted control panel lets you use them whether you are standing or sitting. The KX-MB1536CX supports network connection, providing a level of set-up flexibility that meets diverse user needs. It also allows a single machine to be shared by multiple users, which gives you the benefit of a lower initial cost thanks to less hardware. Power consumption in sleep mode is less than 1 watt,\* which greatly reduces the power consumption level. Of course, the KX-MB1500 Series models have all the functions that a small office or home office needs, including a printer, diverse copy functions, a scanner, and a fax.\*\* This compact series has inherited all the most popular functions of higher-end models.

\* For the KX-MB1536CX and KX-MB1510CX in stand-alone configuration or in USB connection.  
\*\* Available only on the KX-MB1536CX / KX-MB1530CX / KX-MB1520CX.

## Space Saving & Easy to Use with Power Saving – Easy Operation in Any Small Office / Home Office

### Space-Saving Compact Body

To allow the unit to fit into the tight spaces of a small home office, the body size has been minimised. An inner paper exit tray greatly reduces the protrusion of the body, cutting the actual installation area by approximately 22% and the volume by approximately 38%\*.

\* When comparing the KX-MB1536CX with the KX-MB2030CX (manufactured by Panasonic in 2009).



### Slim Back Design\*

Basic operations, such as replenishing consumables and paper, can be done from the front. And the unit is designed to keep the power cord from getting in the way, allowing flexible placement\*\*.

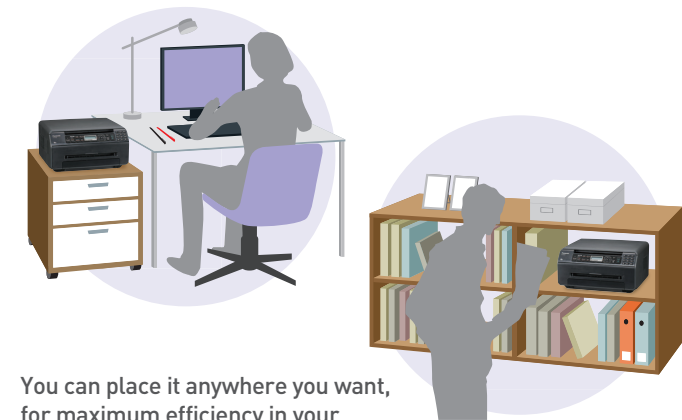


\* Depending on the type of wall, the unit may not be placed directly against the wall. When the KX-MB1536CX is connected to a LAN network, and the ADF cover of the KX-MB1536CX / KX-MB1530CX / KX-MB1510CX is opened, some back space is required.

\*\* The both sides of the unit require some space to provide for ventilation and protection against overheating.

### Slanted Control Panel

The slanted control panel is designed for easy use whether standing or sitting down, so this series can be easily operated when placed on a shelf or a rack.



You can place it anywhere you want, for maximum efficiency in your small office or home office.

### Slim Automatic Document Feeder\*

The slim Automatic Document Feeder saves the height for flexible installation. This allows for simple, convenient multi-document copying and scanning in small home offices.

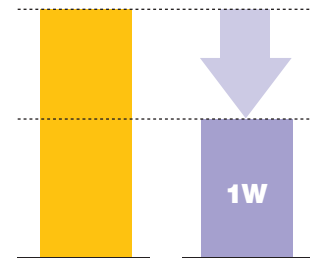
\* Only on the KX-MB1536CX / KX-MB1530CX / KX-MB1510CX.



### Reduced Power Consumption

Power consumption is suppressed to 1 watt\* maximum during sleep mode to save energy while the machine is not being used.

\* For the KX-MB1536CX and KX-MB1510CX in stand-alone configuration or in USB connection.



Space & Power Saving

Easy to Use

Multifunctional

## Multifunctional – Containing the Functions that a Small Office / Home Office Needs

### Easy Print Utility\*

The Easy Print Utility lets you merge and print files created with different applications. You can check the file on a PC before printing, or edit it by rearranging pages or changing them to a 2-in-1 or even a 16-in-1 format. You can also add a header, footer or watermark before printing. After editing, you can save the image as a PDF file. This greatly reduces the number of trial prints and misprints.



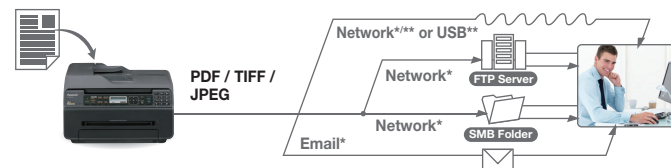
### Quick ID Copy

Copy both sides of one or more ID or business cards consecutively, and then print onto a single page in the 2-in-1, 4-in-1 or 8-in-1 format. This reduces paper consumption and simplifies information management.



### Colour Scanner Function

Documents can be easily scanned into a PC in colour. Also, for the KX-MB1536CX, the scanned data can be sent by Email without using a PC, and also can be saved to an SMB folder or an FTP server.



\* Only on the KX-MB1536CX with a LAN connection.  
\*\* Supported only on Windows® and Mac OS.

### PC Fax Function\*\*

You can directly receive faxes to your PC (Fax to PC), and also send a document as a fax from the PC. This saves the time and trouble of printing, so it increases work efficiency and contributes to a paperless office.

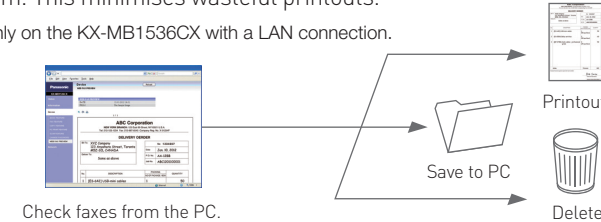
\* Only on the KX-MB1536CX / KX-MB1530CX / KX-MB1520CX.  
\*\* Fax sending only on Windows® and Mac OS.  
Fax receiving only on Windows®.



### Web Fax Preview Function\*

You can read the faxes you receive on a PC web browser first, and then decide to print them, save them to the PC, or delete them. This minimises wasteful printouts.

\* Only on the KX-MB1536CX with a LAN connection.



### Fax to Email\*

Utilising the power of the Internet, you can have received faxes automatically forwarded to Email. Great for mobile users, the machine can convert the documents into PDF format, which is accessible on most Smartphones. This lets you check faxes even while you are on the go, to further raise business efficiency.

\* Only on the KX-MB1536CX with a LAN connection.



### Built-in Speakerphone\*

The built-in speakerphone lets you call the recipient to confirm that a fax has arrived immediately after sending. This increases faxing reliability.

\* Except for the KX-MB1510CX / KX-MB1500CX.

