

# FBL09A (92<sup>□</sup>x 25.5<sup>L</sup>)



eMINEBEA.COM

## 一般仕様 General Specifications

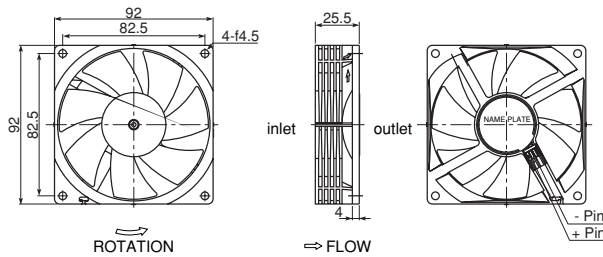
- ◇許容環境温度範囲：-10℃ to +70℃ (65%RH) (Operating)  
-40℃ to +75℃ (65%RH) (Storage)  
実用上さしつかえない状態で結露無きこと
- ◇ Allowable Ambient Temperature Range :  
-10℃ to +70℃ (65%RH) (Operating)  
-40℃ to +75℃ (65%RH) (Storage)  
No such condensation as hinders practical use

## 期待できる寿命

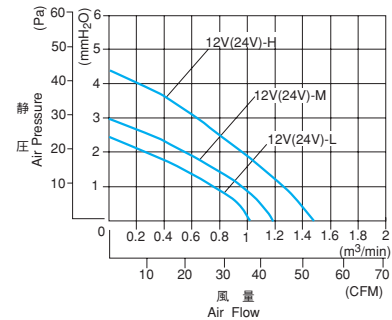
### Expected Life

- ※故障率 10%
- 50,000時間 (40℃, 65%RH)
- ※ Failure rate 10%
- 50,000 hours (40℃, 65%RH)

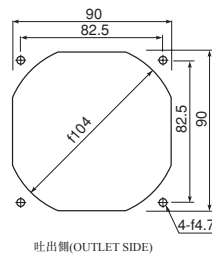
## 外觀図 Outline



## 特性曲線 Characteristic Curves



## 取付穴参考寸法 Panel Out-cuts



## 材質 Material

- ◇軸受 : ハイドロウェーブベアリング
- ◇Bearing : Hydro Wave Bearing

## 仕様 Specifications

型式 Model	定格電圧 Rated Voltage	使用電圧範囲 Operating Voltage	定格電流 Current	定格入力 Input Power	定格回転速度 Rated Speed	騒音 Noise
	(V)	(V)	(mA)*1	(W)*1	(r/min)*1	(dB-A)*1
FBL09A12L	12	7 to 13.8	110	1.32	2200	27.0
FBL09A12M			150	1.80	2450	30.0
FBL09A12H			225	2.70	2950	35.0
FBL09A24L	24	14 to 27.6	80	1.92	2200	27.0
FBL09A24M			110	2.64	2450	30.0
FBL09A24H			140	3.36	2950	35.0

回転方向：ラベルから見て時計方向  
風吹き出し方向：ラベル側

Rotation: Clockwise as seen from the label side.  
Airflow Outlet: Label side

\*1: Average Values in Free Air