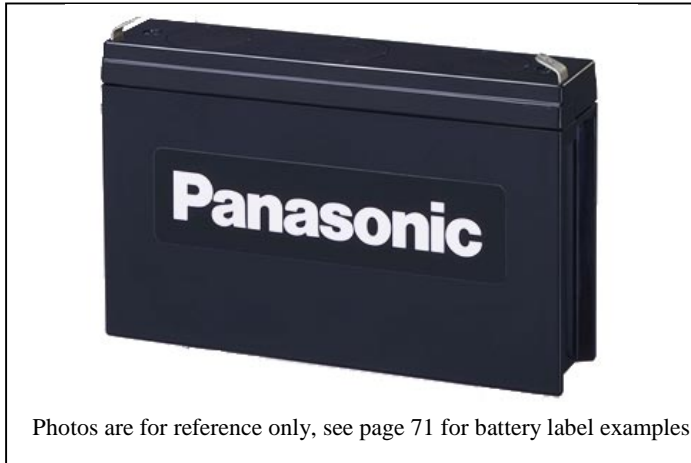


INDIVIDUAL SPECIFICATIONS

LC-RB066R5P(a)(LCR6V6.5BP)



Photos are for reference only, see page 71 for battery label examples.

(a) Add applicable codes for terminal type, destination country, etc. (see page 21)

Specifications

Nominal voltage		6V
Nominal capacity (20 hour rate)		6.5Ah
Dimensions inch (mm)	Total height	3.937 inch (100mm)
	Height	3.701 inch (94mm)
	Length	5.945 inch (151mm)
	Width	1.339 inch (34mm)
Mass		Approx. 2.56 lbs. (1.16kg)

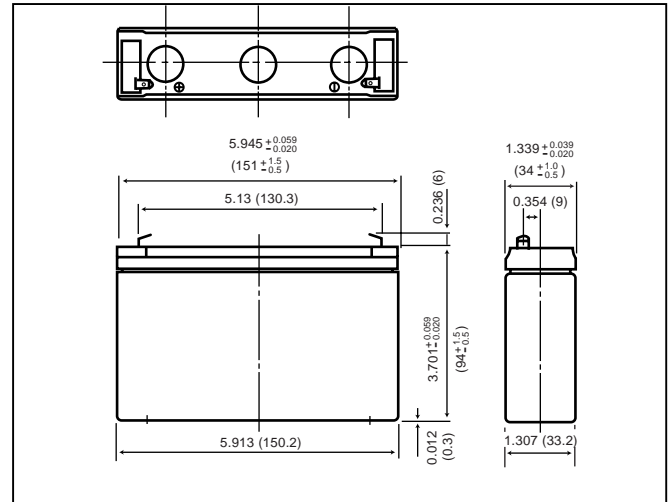
Characteristics

Capacity (note) (77°F (25°C))	20 hour rate (325mA)	6.5Ah	
	10 hour rate (580mA)	5.8Ah	
Internal resistance	5 hour rate (1040mA)	5.2Ah	
	1 hour rate (4000mA)	4.0Ah	
Temperature dependency of capacity (20 hour rate)	1.5 hour rate discharge	2.9A	
	Cut-off voltage 5.25 V		
	Fully charged battery (77°F (25°C))	Approx. 20mΩ	
Self discharge (77°F (25°C))	104°F (40°C)	102 %	
	77°F (25°C)	100 %	
	32°F (0°C)	85 %	
Terminal	5°F (-15°C)	65 %	
	Residual capacity after standing 3 months		91%
	Residual capacity after standing 6 months		82%
Charge Method (Constant Voltage)	Residual capacity after standing 12 months		64%
	Cycle use (Repeating use)	Initial current	2.6 A or smaller
Trickle use	Control voltage	Constant voltage; 7.25 to 7.45 V (per 6V cell 77°F (25°C))	
	Control voltage	6.8 to 6.9 V (per 6V cell 77°F (25°C))	

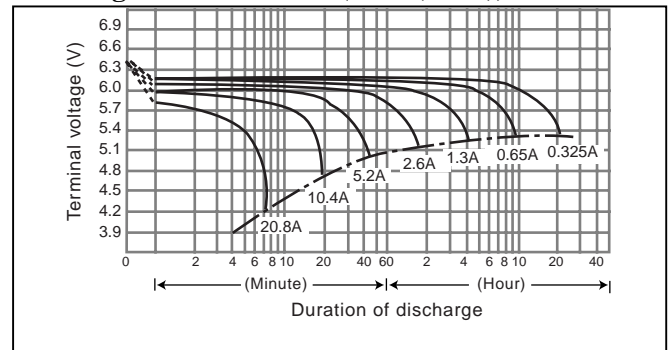
(Note) The above characteristics data are average values obtained within three charge/discharge Cycles not the minimum values.

* This product adopts UL94HB-compliant resin as the material of the battery case. Product color is black. Optionally, type LC-VB066R5P(a) which adopts flame-retardant resin complying with UL94V-0 is also available. Product color is gray.

Dimensions inch (mm)



Discharge characteristics (77°F (25°C)) (note)



Duration of discharge vs. Discharge current (note)

