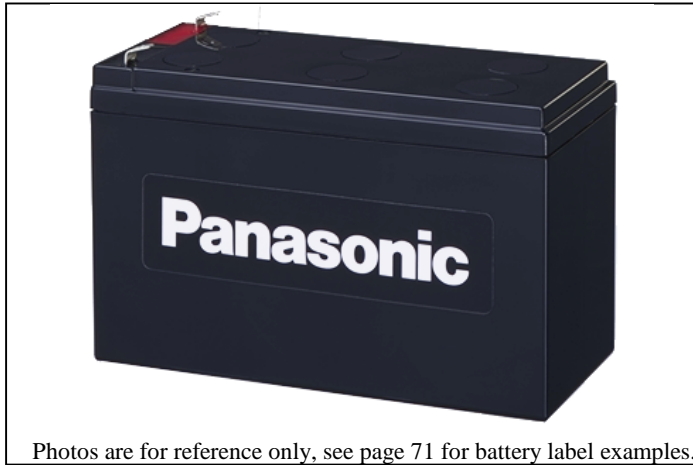


INDIVIDUAL SPECIFICATIONS

LC-RB126R5P(a) (LCR12V6.5BP)

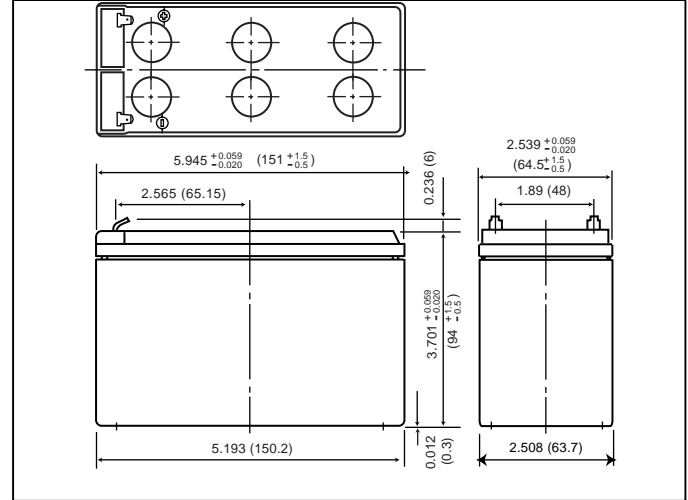
* This product adopts UL94HB-compliant resin as the material of the battery case. Product color is black. Optionally, type LC-V126R5P(a) which adopts flame-retardant resin complying with UL94V-0 is also available. Product color is gray.



Photos are for reference only, see page 71 for battery label examples.

(a) Add applicable codes for terminal type, destination country, etc. (see page 21)

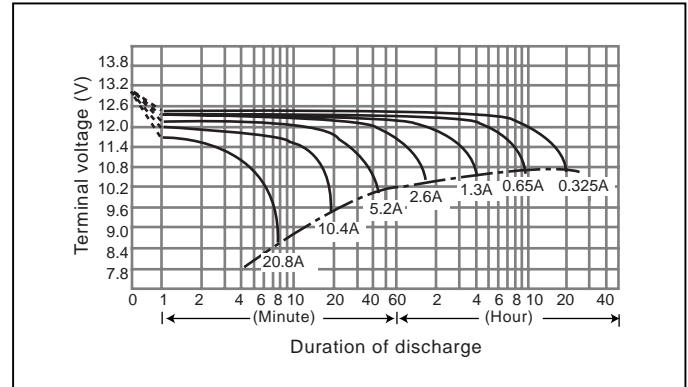
Dimensions inch (mm)



Specifications

Nominal voltage		12V
Nominal capacity (20 hour rate)		6.5Ah
Dimensions inch (mm)	Total height	3.937 inch (100mm)
	Height	3.701 inch (94mm)
	Length	5.945inch (151mm)
	Width	2.539 inch (64.5mm)
Mass		Approx. 5.00 lbs. (2.27kg)

Discharge characteristics (77°F (25°C)) (note)



Characteristics

Capacity (note) (77°F (25°C))	20 hour rate (325mA)	6.5Ah
	10 hour rate (580mA)	5.8Ah
	5 hour rate (1040mA)	5.2Ah
	1 hour rate (4000mA)	4.0Ah
	1.5 hour rate discharge Cut-off voltage 10.5 V	2.9A
Internal resistance	Fully charged battery (77°F (25°C))	Approx. 40mΩ
Temperature dependency of capacity (20 hour rate)	104°F (40°C)	102 %
	77°F (25°C)	100 %
	32°F (0°C)	85 %
Self discharge (77°F (25°C))	Residual capacity after standing 3 months	91%
	Residual capacity after standing 6 months	82%
	Residual capacity after standing 12 months	64%
Terminal		AMP Faston tab (Type 187/250♦)
Charge Method (Constant Voltage)	Cycle use (Repeating use)	Initial current 2.6 A or smaller Control voltage 14.5 to 14.9 V (per 12V cell 77°F (25°C))
	Trickle use	Control voltage 13.6 to 13.8 V (per 12V cell 77°F (25°C))

(Note) The above characteristics data are average values obtained within three charge/discharge Cycles not the minimum values.

Duration of discharge vs. Discharge current (note)

