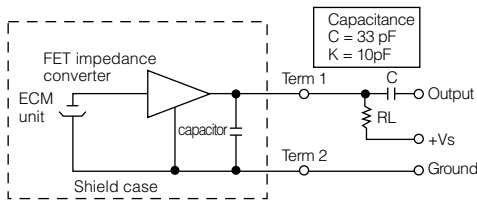


## Schematic Diagram

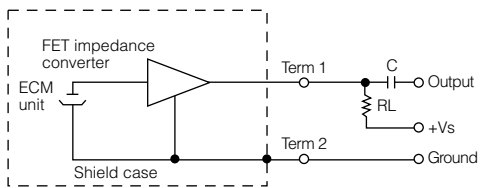


### Standard Operating Conditions:

**Vs = 2.0V RL = 2.2kΩ**

### Model No.

WM-63GC series  
WM-64C series  
WM-64K series  
WM-64BC series  
WM-64BK series  
WM-64MC series  
WM-64PC series  
WM-64PK series  
WM-62PC series  
WM-62PK series  
WM-62CC series  
WM-62K series  
WM-66EC series  
WM-66DC103

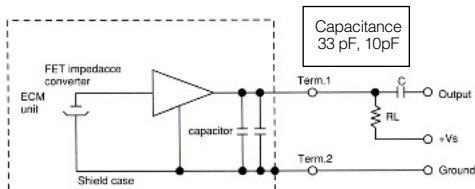


### Standard Operating Conditions:

**Vs = 2.0V RL = 2.2kΩ**

### Model No.

WM-64A series  
WM-62A series  
WM-62C series  
WM-62B series  
WM-61A series  
WM-61B series  
WM-60A series  
WM-66D103  
WM-67D103  
WM-65A103



### Standard Operating Conditions:

**Vs = 2.0V RL = 2.2kΩ**

### Model No.

WM-64MN series  
WM-64PN series  
WM-63GN series

### Standard Operating Conditions:

**Vs = 1.5V RL = 680Ω**

### Model No.

WM-55D103  
WM-55A103  
WM-56A103

### Standard Operating Conditions:

**Vs = 1.5V RL = 3.0kΩ**

### Model No.

WM-52B series

### Standard Operating Conditions:

**Vs = 2.5V RL = 2.2kΩ**

### Model No.

WM-54B series

### Standard Operating Conditions:

**Vs = 4.5V RL = 2.2kΩ**

### Model No.

WM-034B series  
WM-034C series  
WM-034M series

### Standard Operating Conditions:

**Vs = 1.5V RL = 1.5kΩ**

### Model No.

WM-034D series  
WM-034DB series  
WM-034N series