

DC/DC Power Module

Series: **FD**

Type: **10V, 28V**

Japan



DC/DC power module can be used for down-sized, large-current and non-centralized power of power module for communication systems equipment

Industrial Property ; Patent 16 (pending)

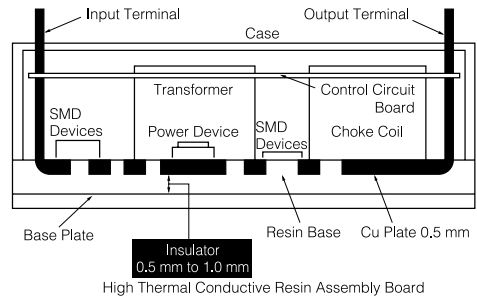
■ Features

- Super power (500 W), down-sized high-density (4.6 W/cm³) due to use of high heat conductive substrate
- High-efficiency($\eta=90$ % typ.) and low-noise level (compared with our conventional one : Approx. 20 dB less) by means of newly developed converter
- Energy-saving design (8 W less than conventional Matsushita products)

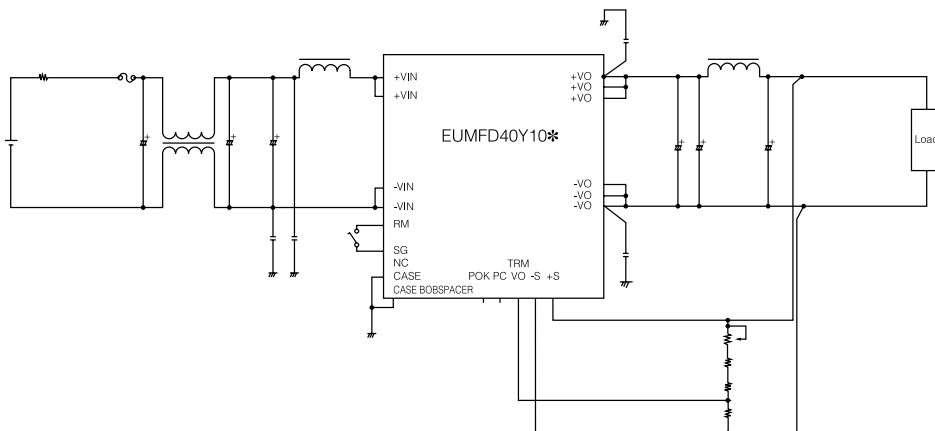
■ Recommended Applications

- Radio communication equipment
- Cable communication equipment
- For non-centralized type power supply

■ Construction(Cross Section)



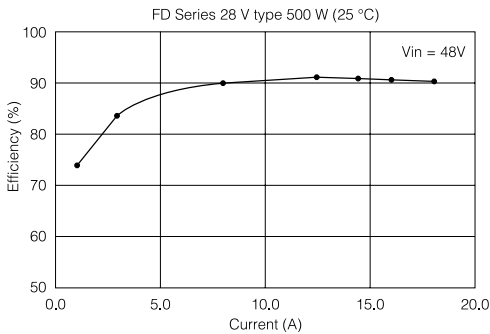
■ Block Diagram (Example)



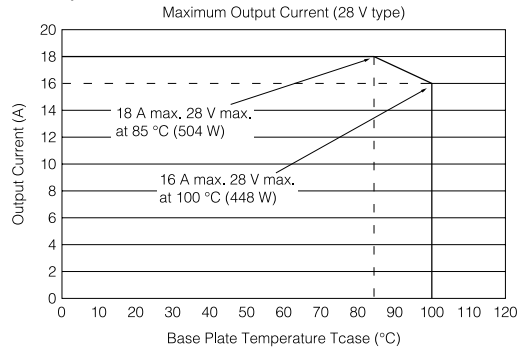
■ Ratings ● Typical Spec.

Characteristics		EUMFD40Y10A	EUMFD40Y28A	Condition
Input	Input Voltage	36 VDC to 72 VDC (Rated 48 VDC)		
	Input Current	10.5 A max.	11.0 A max.	Rated Input and Output
	Efficiency	85 % typ.	90 % typ.	Rated Input and Output
Output Conditions	Rated output Voltage	10 V	28 V	
	Output Voltage Variable Range	9 V to 12.5 V	24 V to 28 V	
	Rated output Current	40 A	16 A	
	max. output Current	42.25 A	18 A	
	Line Regulation	1 % max.	1 % max.	
	Load Regulation	1.5 % max.	1.5 % max.	
	Ripple Noise Voltage	200 mV [p-p]	300 mV [p-p]	
Environment	Operating Temperature	-20 °C to 100 °C		Base Plate Temp.
	Operating Humidity	5 % to 85 %		Not Be Dewy
	Storage Temperature	-40 °C to 115 °C		
Insulation Specifications	Dielectric Withstanding Voltage	1500 VDC for 1min (Input and Output or Base Plate)		Normal Temp.
	Insulation Resistance	100 MΩ 500 VDC (Input and Output or Base Plate)		Normal Humidity
Others	Attached Function	Over Current Protection, Over Voltage Protection		
		Over Heat Protection, Remote ON/OFF		
		Parallel Operation With Forced Load Sharing		
		Power Good Signal		
	Applied Safety	IEC 950		
	Size	W 122.6 mm × D 64.2 mm × H 13.9 mm		
Mass	280 g			

■ Efficiency



■ Output Conditions



■ Dimensions in mm (not to scale)

