

**Add new air conditioner device**

Air conditioner need to be registered before using "Panasonic Comfort Cloud" app.

**Setting connection network (Wireless remote control)**

Identify and select QR code availability condition.

**2 QR codes**  
Setup using QR scan (Refer page 5-6) or Setup using AP mode (Refer page 6-7)

**1 QR code**  
Manual setup AP method (Refer page 7-8)  
Manual setup WPS method (Refer page 8-9)

**Setting connection network (Wired remote control)**

**Setting connection network (Wired remote controller)**

- 1 Check that the Wireless LAN LED is ON. At the remote controller, select the WLAN ON/ OFF until the Wireless LAN LED starts blinking. Select Function Setup from remote controller Main Menu.

**(Indoor unit's Wireless LAN LED)**

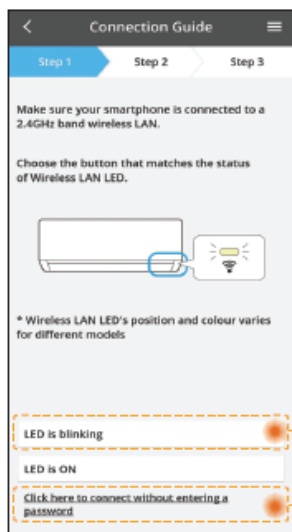
Fast blink	The unit is establishing the connection.
Slow blink	The unit is not securing the connection.
No blink (stays on)	The unit has established the connection.

- It can establish the connection to the unit even if the unit is turned OFF.

**Note**

- If the Wireless LAN LED blinks continuously and you do not want to use the app, select the WLAN ON/OFF to turn it off.

2



- Select the status of the Wireless LAN LED.
- To connect using WPS, please select to "connect without entering a password".

To AP mode (method 2)

To WPS mode (method 1)

## Connection network using WPS mode (method 1)

①



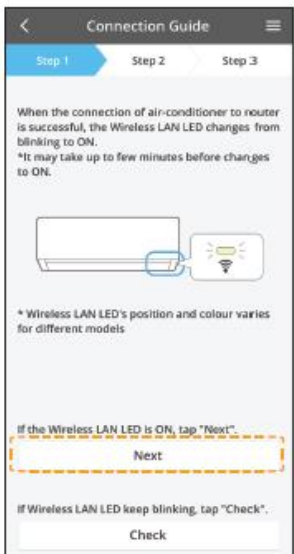
Press the WPS button from the router that will be connected to an air conditioner.

- Check that the Wireless LAN LED is ON. If the Wireless LAN LED is OFF, select the WLAN ON/OFF to turn it on, and enable Wireless LAN connection.

## ② Select Easy setting (WPS) from remote controller.



③



- When the connection of air conditioner to router is successful, the Wireless LAN LED changed from blinking to ON.

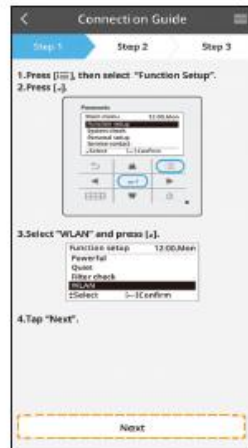
④



- If the Wireless LAN LED keep blinking, check the wireless router connection.

## Connection network using AP mode (method 2)

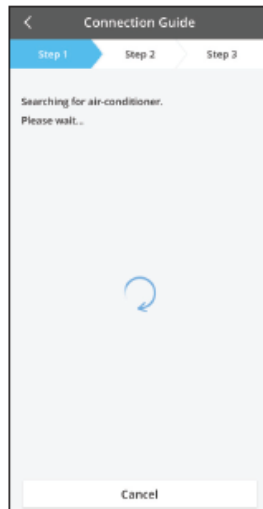
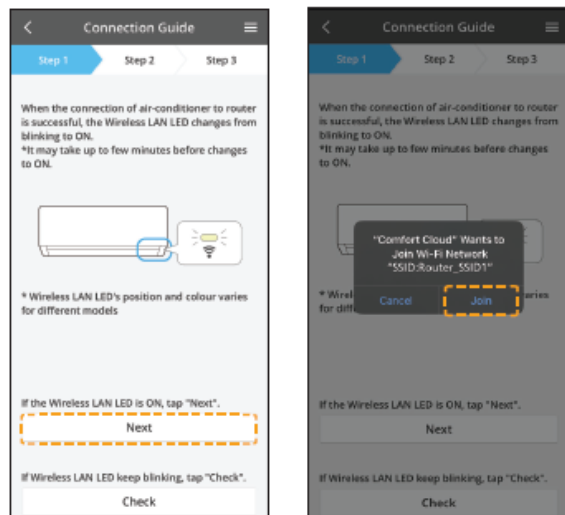
- ① Select Advance setting (AP) from remote controller.



- ② Join to connect to the "Panasonic-CS-wirelessAP" network. Enter the password of the selected wireless router and continue.



- ③ When connection of air conditioner to router is successful, the Wireless LAN LED will change from blinking to ON. If the Wireless LAN LED is ON, connect the smartphone to wireless router. (return to this application after completing the wireless network settings to continue the setup)
- If the Wireless LAN LED keep blinking, check the wireless router connection.



## Select the air-conditioner and set the password



- Select the air conditioner model to register the device.

- ② Select Device registration from remote controller to register your air-conditioner.



3

Device password settings

Step 1 Step 2 Step 3

Model:  
CS-HZ25UKE

Input the password to complete the registration.  
Password must be 8-15 characters with letters  
and numbers.

Password

password

Re-enter password

Register

Set a password for new air conditioner model to complete the registration.

Password must be 8-15 characters with letters and number.

**Note:**

- Keep password for future used on additional user registration.

4

New air conditioner settings

Step 1 Step 2 Step 3

Model  
CS-HZ25UKE

Enter your preferred name for this air-conditioner

Air conditioner name

Living Room

Register

Once connection is established between the app and the new air conditioner through the registration process, set the preferred name for this air conditioner to help identify it.

- By registered the new name of air conditioner, the function of "Panasonic Comfort Cloud" app is ready to be used.