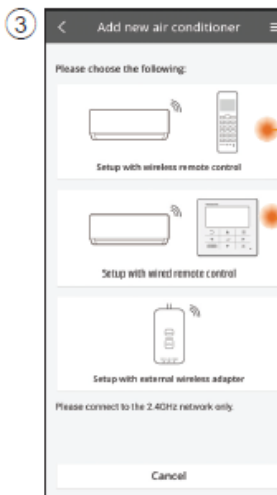
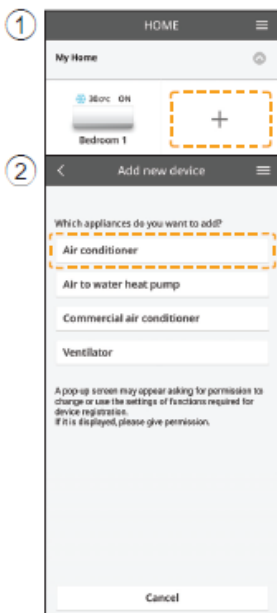
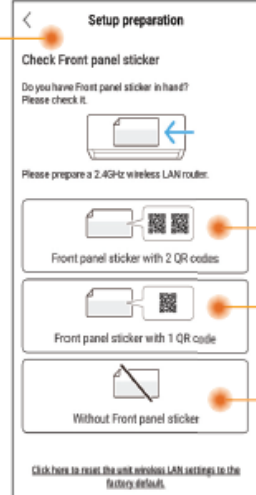


Add new air conditioner device

Air conditioner need to be registered before using "Panasonic Comfort Cloud" app.



Setting connection network (Wireless remote control)

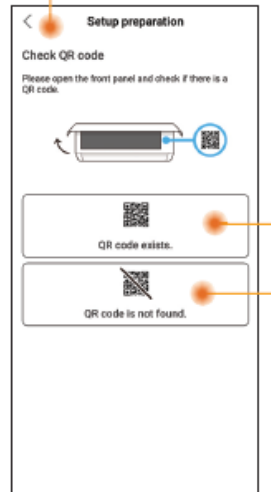


Identify and select QR code availability condition.

2 QR codes
Setup using QR scan (Refer page 5-6) or Setup using AP mode (Refer page 6-7)

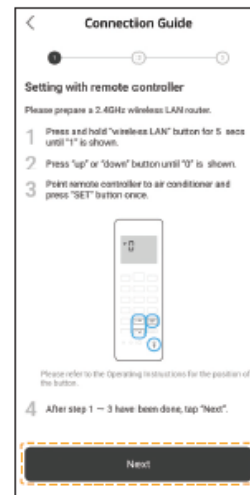
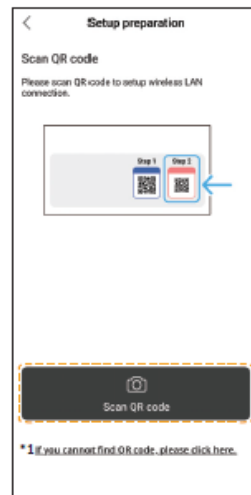
1 QR code
Manual setup AP method (Refer page 7-8)
Manual setup WPS method (Refer page 8-9)

Setting connection network (Wired remote control) (Refer page 9)

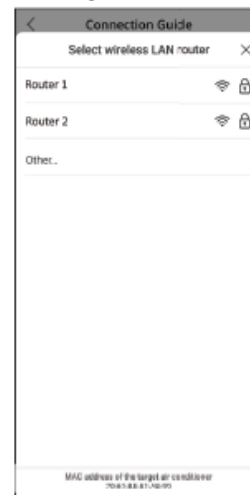
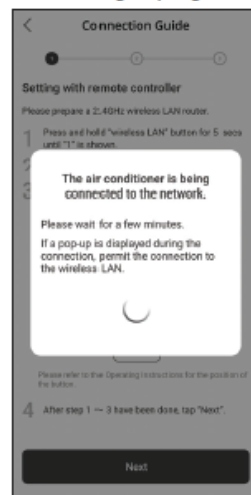


Setup using QR scan

- ① Tap "Scan QR code".
- ② Scan in progress.
- ③ Follow the screen instructions from the app. Tap "Next".



- ④ Connecting in progress.
- ⑤ Tap "Connect".
- ⑥ Select your router.

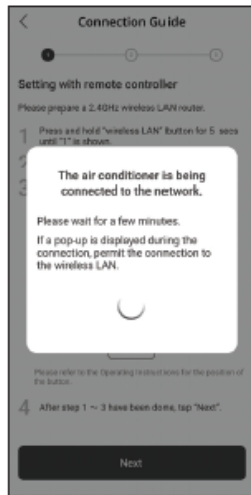


*1 If QR scan is failed. Proceed to "Setup using AP mode". (Refer page 6-7)

Setting connection network (Wireless Remote Control) - (2QR code)

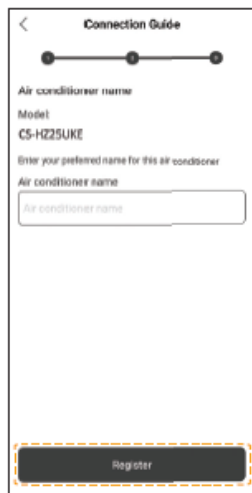
Setup using QR scan

- ⑦ Input router password. ⑧ Connection in progress. ⑨ Set a password.



- Keep the password for future use.

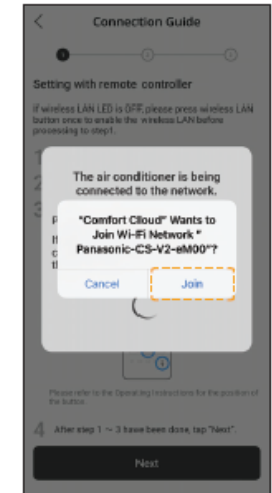
- ⑩ Enter a name for the air conditioner. ⑪ Registration completed.



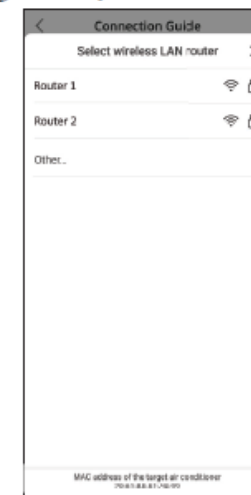
Setting connection network (Wireless Remote Control) - (2QR code)

Setup using AP mode

- ① Tap "can't find QR code". ② Follow the screen instructions from the app. Tap "Next". ③ Tap "Connect".

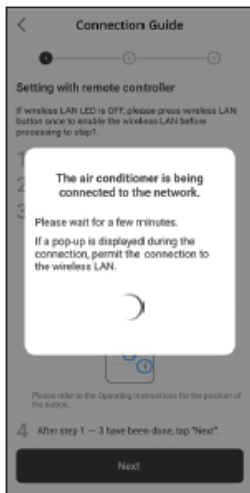


- ④ Tap "Connect". ⑤ Select your router. ⑥ Input router password.



Setup using AP mode

- ⑦ Connection in progress. ⑧ Set a password. ⑨ Enter a name for the air conditioner.



- Keep the password for future use.

- ⑩ Registration completed.

