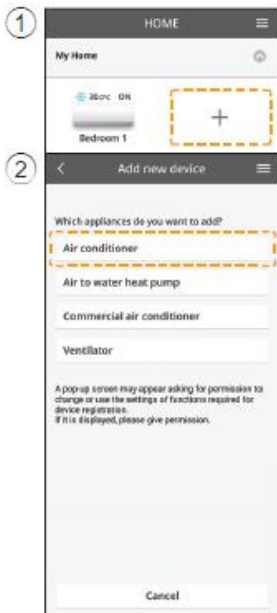


Add new air conditioner device

Air conditioner need to be registered before using "Panasonic Comfort Cloud" app.



Setting connection network (Wireless remote control)

Setup preparation

Check Front panel sticker

Do you have Front panel sticker in hand? Please check it.

Please prepare a 2.4GHz wireless LAN router.

Front panel sticker with 2 QR codes

Front panel sticker with 1 QR code

Without Front panel sticker

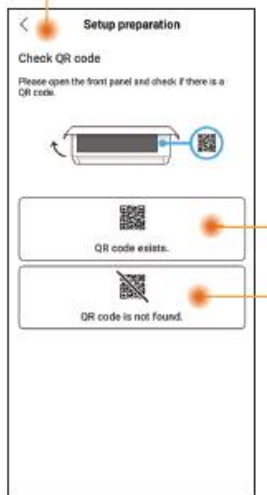
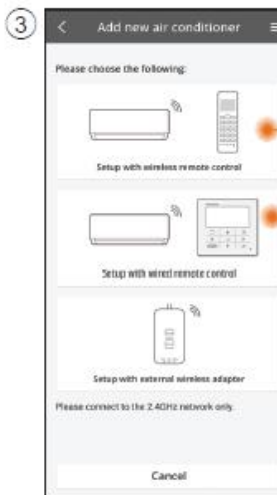
Click here to reset the unit wireless LAN settings to the factory default.

Identify and select QR code availability condition.

2 QR codes
Setup using QR scan (Refer page 5-6) or Setup using AP mode (Refer page 6-7)

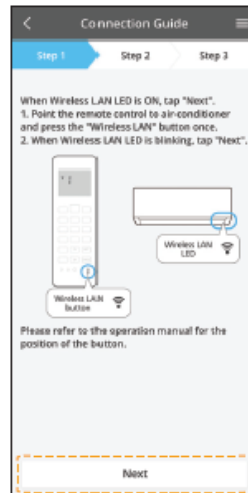
1 QR code
Manual setup AP method (Refer page 7-8)
Manual setup WPS method (Refer page 8-9)

Setting connection network (Wired remote control) (Refer page 9)



Manual Setup - AP method

- Follow the screen instructions from the app. Tap "Next".



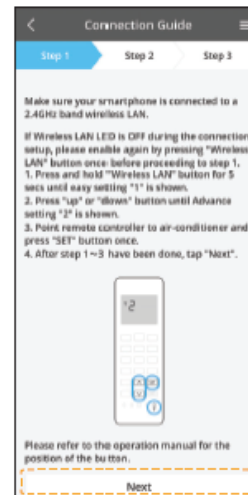
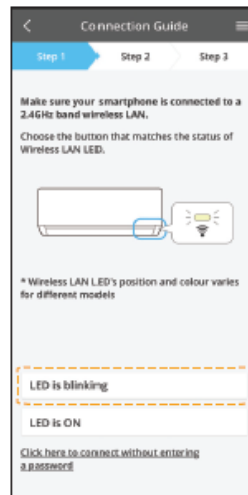
Fast blink	The unit is establishing the connection.
Slow blink	The unit is not securing the connection.
No blink (stays on)	The unit has established the connection.

- It can establish the connection to the unit even if the unit is turned OFF.

Note

- If the Wireless LAN LED blinks continuously and you do not want to use the app, press the Wireless LAN button to turn it off.

- Tap "LED is blinking".
- Follow the screen instructions from the app. Tap "Next".
- Tap "Join".



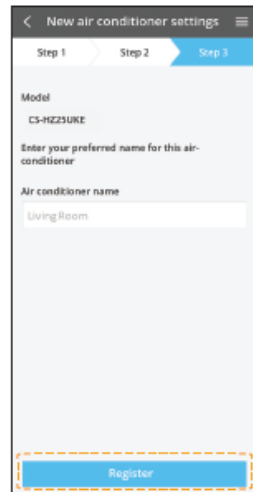
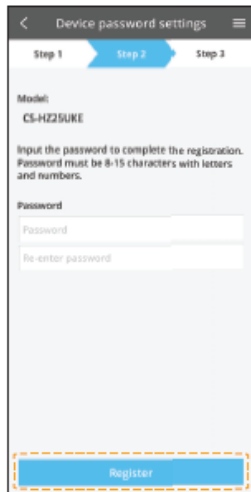
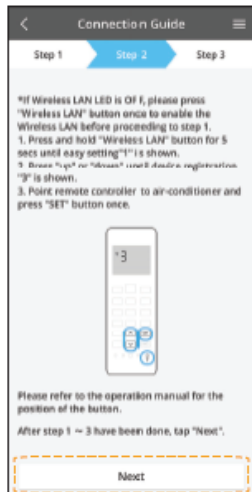
Setting connection network (Wireless Remote Control) - (1QR code)

Manual Setup - AP method

- ⑤ Enter router password. ⑥ Tap "Next". ⑦ Select air conditioner to register.



- ⑧ Tap "Next". ⑨ Set a password. ⑩ Enter a name for the air conditioner.

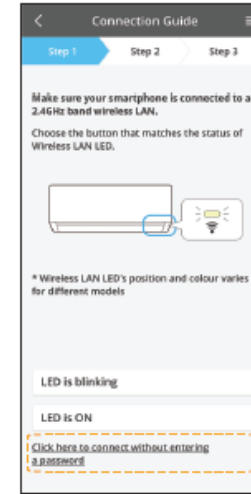
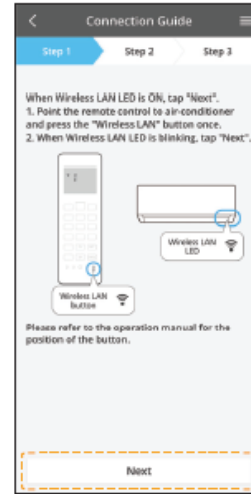


- Keep the password for future use.

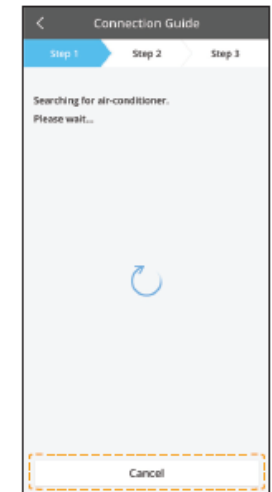
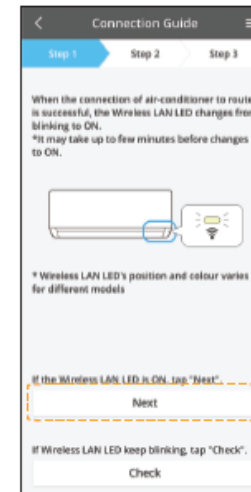
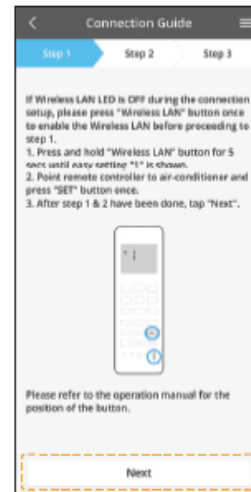
Setting connection network (Wireless Remote Control) - (1QR code)

Manual Setup - WPS method

- ① Follow the screen instructions from the app. Tap "Next". ② Tap "connect without entering password". ③ Tap "Next".

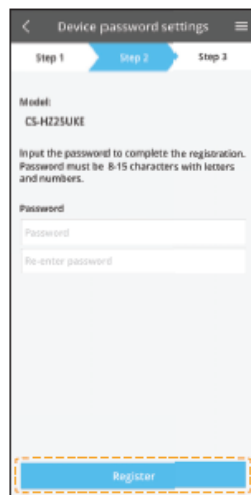
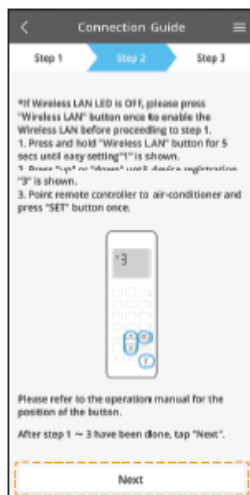


- ④ Follow the screen instructions from the app. Tap "Next". ⑤ Tap "Next". ⑥ Connection in progress.



Manual Setup - WPS method

- 7 Select air conditioner to register.
- 8 Follow the screen instructions from the app. Tap "Next".
- 9 Set a password.



- 10 Enter a name for the air conditioner.

