

Connecting Network

Usage precautions

- Before using this product, be sure to read all the precautions in this manual for proper use. The Company is not liable for any defects and damages, unless legal liability is recognized, in regards to failures, incurred by use of this product that occur through incorrect use or during use by yourself or a third party.

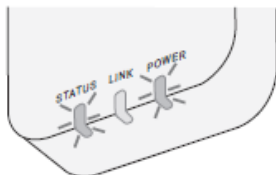
Security Measure

- Wireless LAN uses radio waves to exchange information. Therefore, there is a risk of unauthorized access.
- Initialize the APP settings on the product prior to disposal or transferring to a third party.

Establish network connection to the internet via Wireless mode.

1. Turn on the power supply to the indoor unit.

- The Power LED lights (green).
- The Status LED blinking (green).

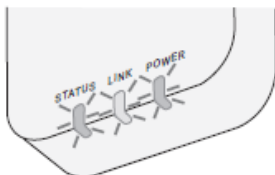


2. Download and install the “Panasonic Comfort Cloud”.



3. Follow the instruction of the app to complete the installation setup. Refer to next page.

- All LEDs lights (green).

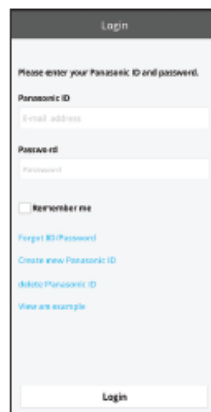


Starting “Panasonic Comfort Cloud”

Use a Smartphone that is iOS/Android compatible.

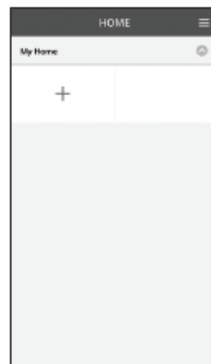
- User interface image may change without notification.
- There is no charge for using this application. However, other charges may be incurred for connection and operation.
- Updates to the service may mean there are changes to the design of the screen and display.

1. Login to the “Panasonic Comfort Cloud”

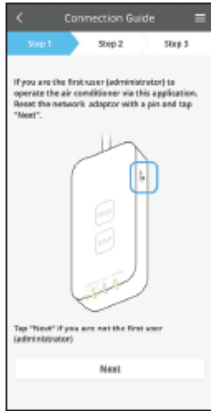


Login with your Panasonic ID and password. Panasonic ID can be registered free from the link on the page or at the following URL. (<https://csapl.pcpf.panasonic.com/Account/Register/001>)

2. Connection Guide



- At My Home screen, tap “+” to add new product.
- Select the product that you want to add.
- Tap “Start” to begin the connection setup.



- iv. Tap "Next" after confirming the POWER LED of the network adaptor is ON.
- v. If you are the first user (administrator) to operate the air conditioner via this application, reset the network adaptor with a pin and tap "Next".

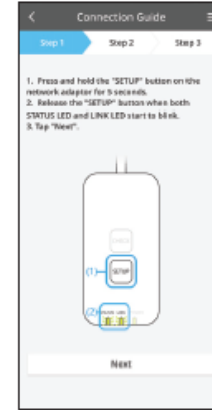


- vi. Choose the button that matches the status of LINK LED on the network adaptor.

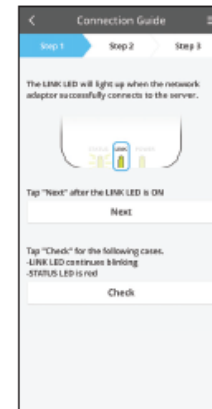
To connect with AP mode, proceed to instruction 3.2 (For router that does not support WPS)

To connect with WPS mode, proceed to instruction 3.1 (For router that supports WPS)

3.1 Connect with WPS Mode

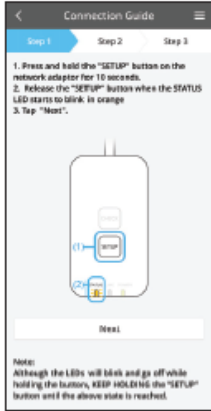


- i. Press the WPS button on the router to establish connection.
- ii. Tap "Next" after the router is ready for connection.
- iii. Press and hold the "SETUP" button on the network adaptor for 5 seconds.
- iv. Release the "SETUP" button when both STATUS LED and LINK LED start to blink. Tap "NEXT".

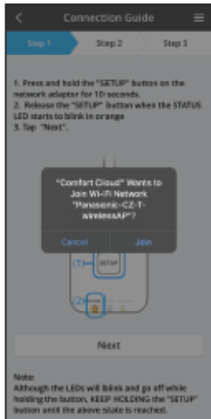


- v. Wait until LINK LED is ON indicates the connection setup is complete. Tap "NEXT" and proceed to instruction 4.

3.2 Connect with AP Mode



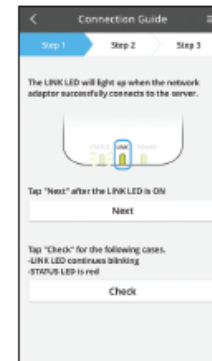
- i. Press and hold the “SETUP” button on the network adaptor for 10 seconds.
- ii. Release the “SETUP” button when the STATUS LED starts to blink in orange.
- iii. Tap “NEXT”.



- iv. Tap “JOIN” to connect “Panasonic-CZ-T-wirelessAP” network.



- v. Enter the password of the selected wireless router and continue.



- vi. The LINK LED will light up when the network adaptor successfully connects to the server. Tap “NEXT” and proceed to instruction 4. **During network adaptor connecting to wireless router, STATUS LED and LINK LED will blink simultaneously.*

4. Setup completion



- i. Input the Device ID. Device ID is written at name plate attached to the network adaptor or label attached on the packaging.
- ii. Set the password for the network adaptor.
- iii. Tap “Register” to complete the setup.



- iv. You can name the air conditioner unit to help you identify it.

Note

- Confirm the APP's screen connectivity status before or during operation, if the status is not reflected, please use in-house remote control to operate.

Use the “Panasonic Comfort Cloud”



User's manual can be found under Menu tab.

The “Panasonic Comfort Cloud” is connected to the network adaptor and ready for use.