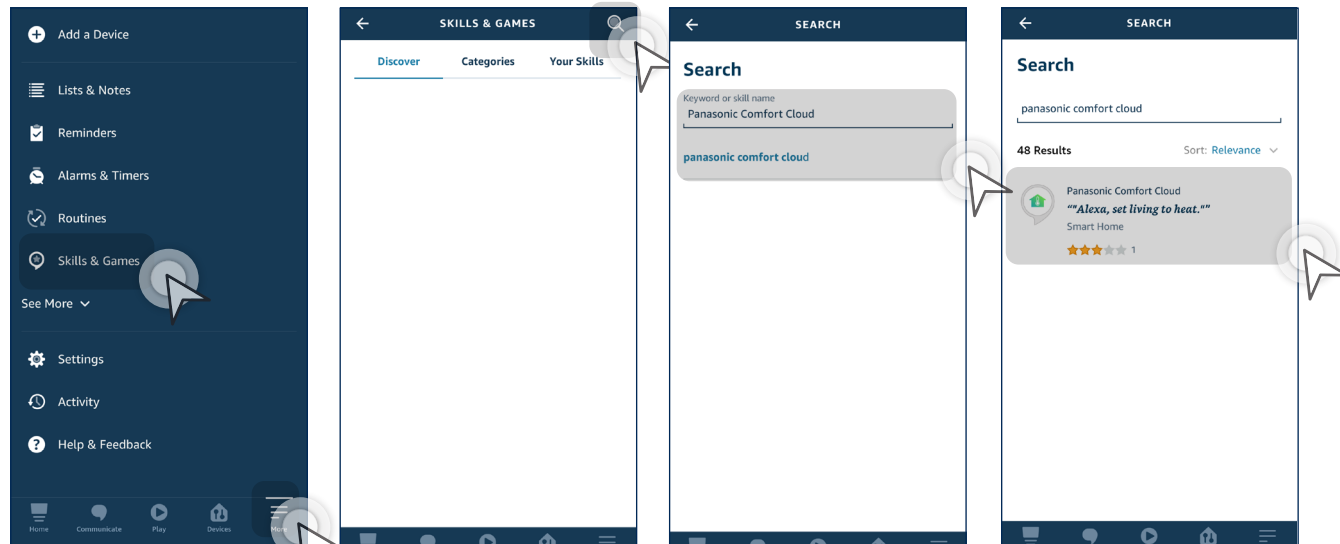


4.5 Voice Control Settings

Link your Panasonic Comfort Cloud App to Alexa.


STEP 1

Tap "More" to access this screen and then choose "Skills and Games".

STEP 2

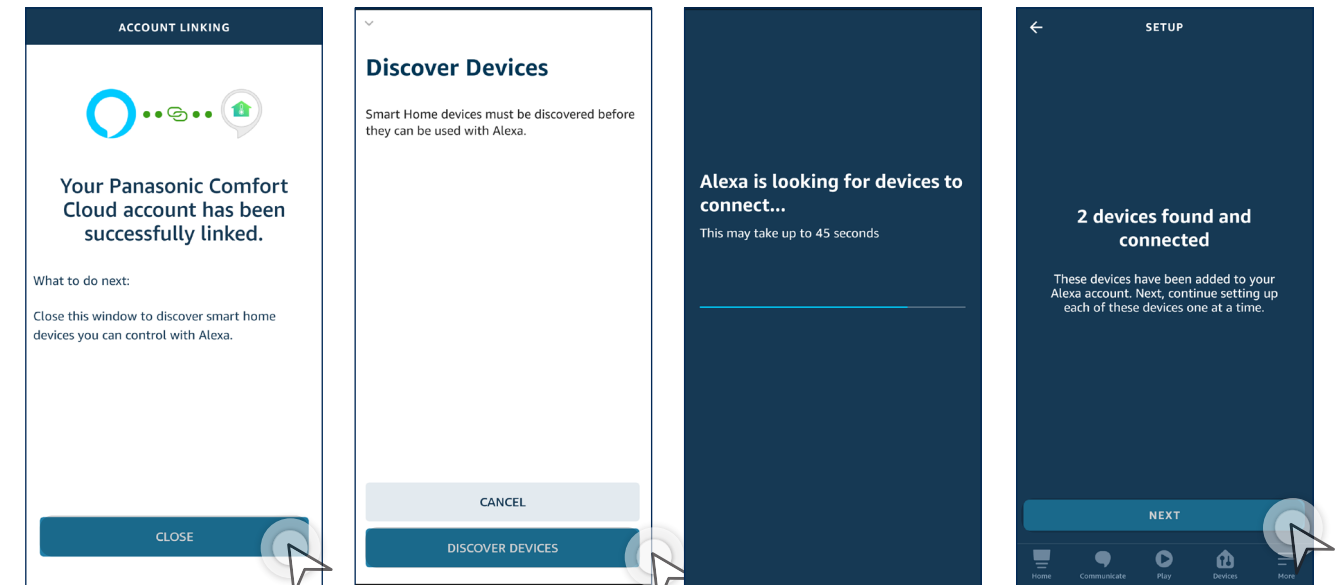
Tap "🔍".

STEP 3

Search for "Panasonic Comfort Cloud".

STEP 4

Select "Panasonic Comfort Cloud".


STEP 9

Tap "CLOSE".

STEP 10

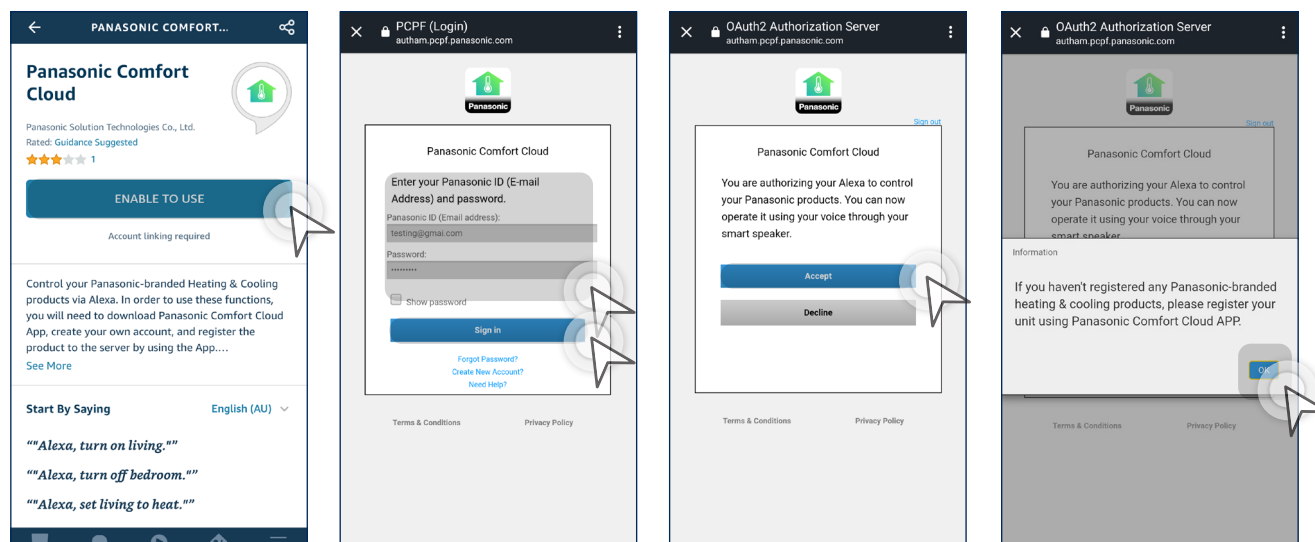
Select "DISCOVER DEVICES".

STEP 11

Wait.

STEP 12

Tap "NEXT" after devices found.


STEP 5

Tap "ENABLE TO USE".

STEP 6

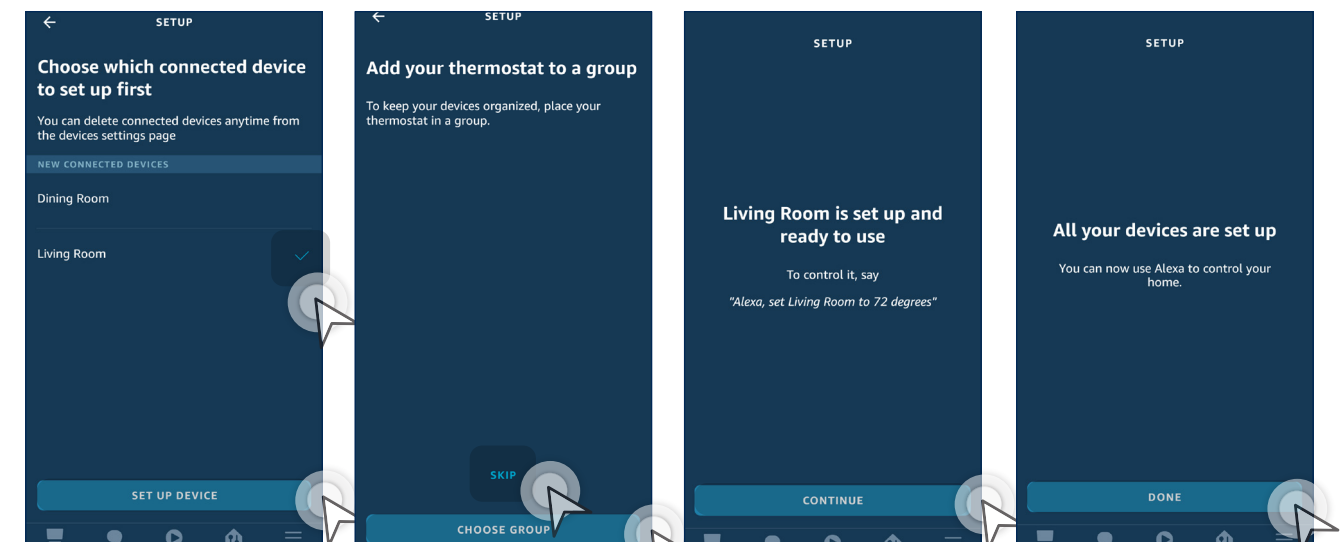
Key in your Panasonic Comfort Cloud ID and Password, then tap "SIGN IN".

STEP 7

Tap "Accept".

STEP 8

Tap "OK".


STEP 13

Select the air-conditioner unit then tap "SET UP DEVICES".

STEP 14

You may choose to add your selected air-conditioner to a group or select "SKIP".

STEP 15

Tap "CONTINUE".

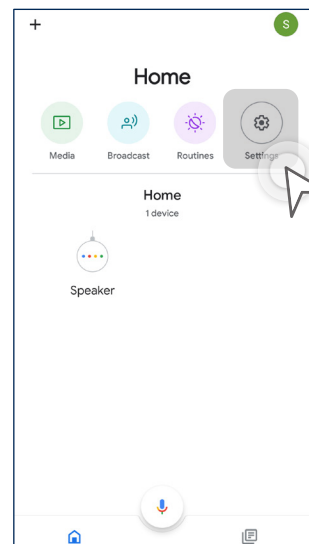
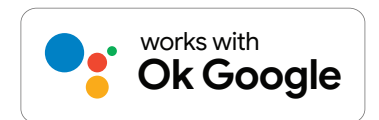
STEP 16

When your devices are ready, then tap "DONE".

*Please refer to page 190 to view list of Alexa Compatible AC devices.

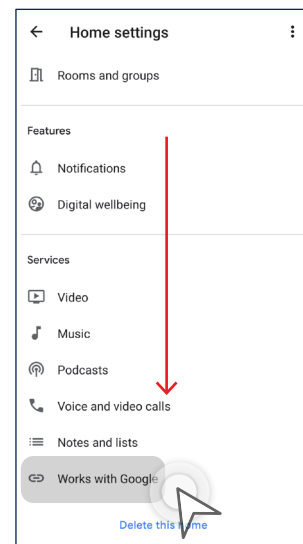
4.5 Voice Control Settings

Link your Panasonic Comfort Cloud App in the Google Home app



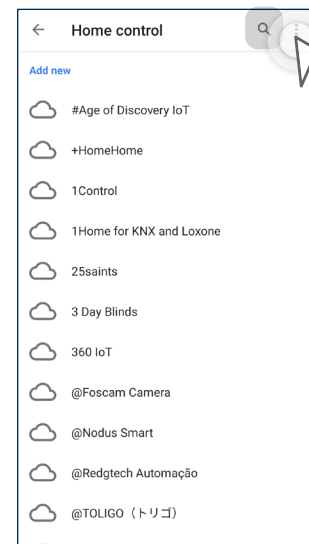
STEP 1

Tap "Setting" in the Home screen.



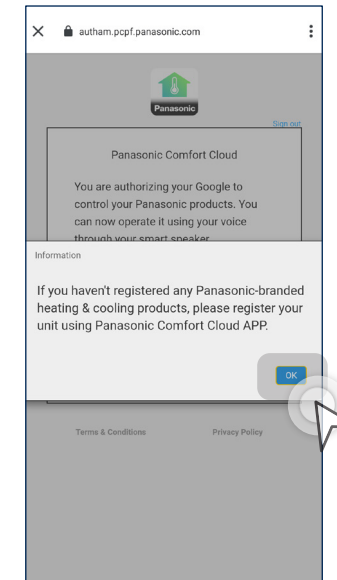
STEP 2

Scroll down to "Works with Google" and select it.



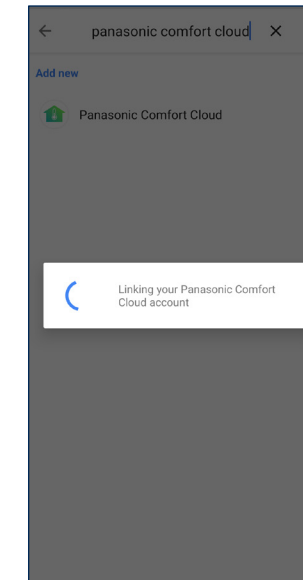
STEP 3

Tap "Q".



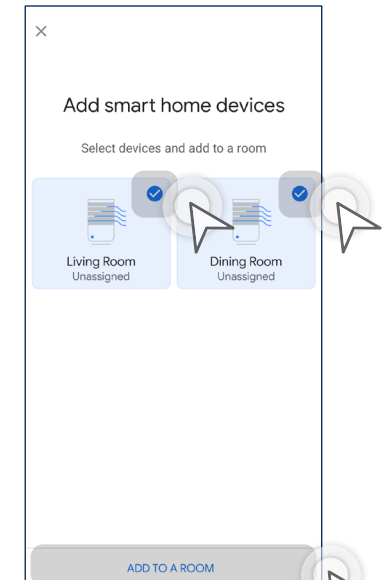
STEP 7

Tap "OK".



STEP 8

Wait for account linking.



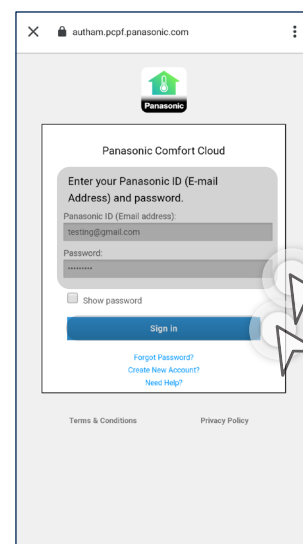
STEP 9

Select your air conditioner unit then tap "ADD TO A ROOM".



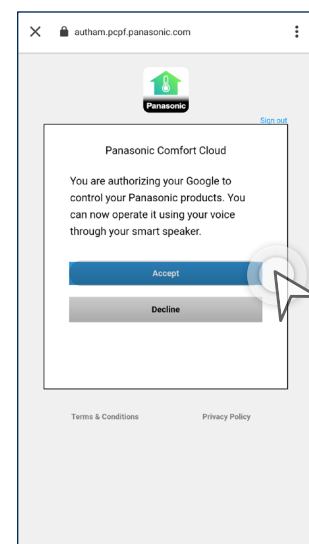
STEP 4

Search for "Panasonic Comfort Cloud" and tap it.



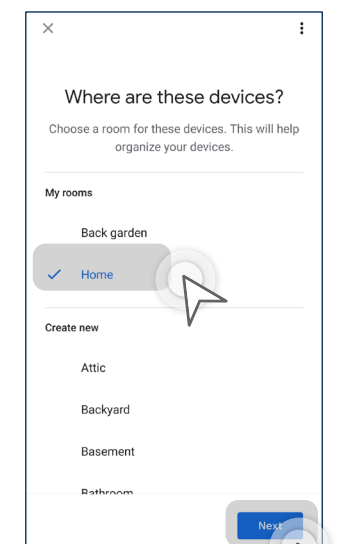
STEP 5

Key in your Panasonic Comfort Cloud ID and Password, then tap "Sign in".



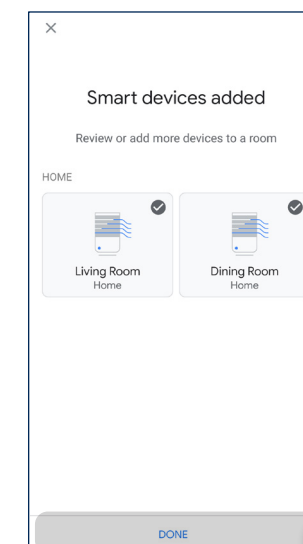
STEP 6

Tap "Accept".



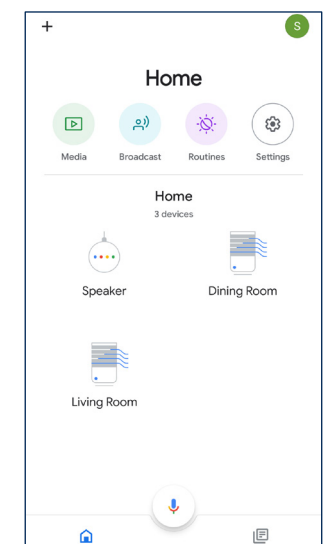
STEP 10

Select the room to be added.



STEP 11

Select the room to be added then tap "DONE".



STEP 12

Your devices are now ready for use.