

2.5 Maximising Your Energy Savings

Intelligent Savings with ECO Mode with A.I.

ECO Mode with A.I. controls cooling efficiently by detecting the ambient temperature and maintaining the temperature with minimal energy waste.



Activate ECO mode.



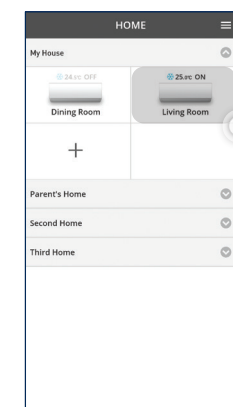
Living Room

Day time with sunlight: ECO Mode with A.I. prioritises on maximising cooling comfort while saving energy with ECO Mode.



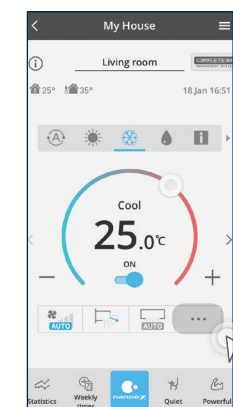
Bedroom

Night time with cool breeze: ECO Mode with A.I. prioritises energy saving over cooling comfort.



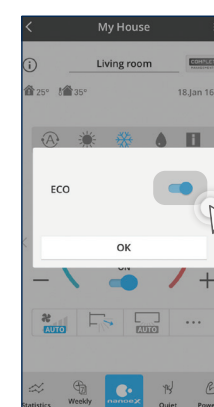
STEP 1

Select an air conditioner from a group.



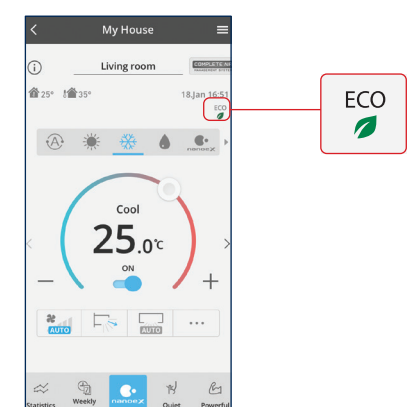
STEP 2

Tap “...” to access additional feature.



STEP 3

Toggle ECO “ON”. (if the switch is blue means it is ON).



STEP 4

ECO Mode with A.I. “ECO” will appear below the date meaning ECO mode is activated.