


4.2 Add New Units to Groups


Add New Air Conditioner Units to the Groups.

How to register new air conditioner units to existing groups.


Children's Room




Master Bedroom




SOHO



Kitchen

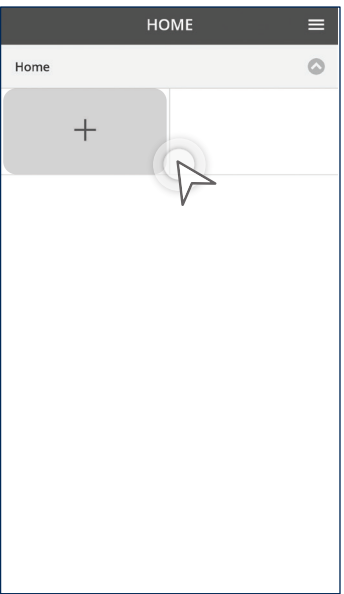


Living Room



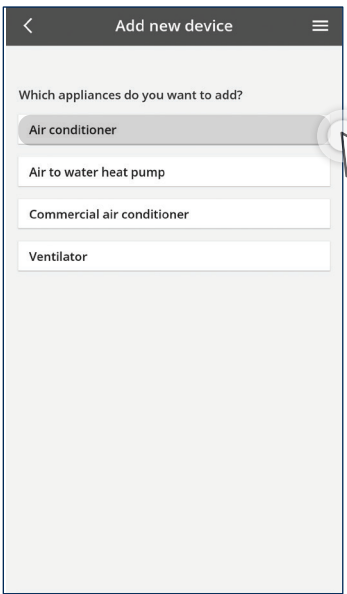


Add New Air Conditioner Units (External Adaptor).



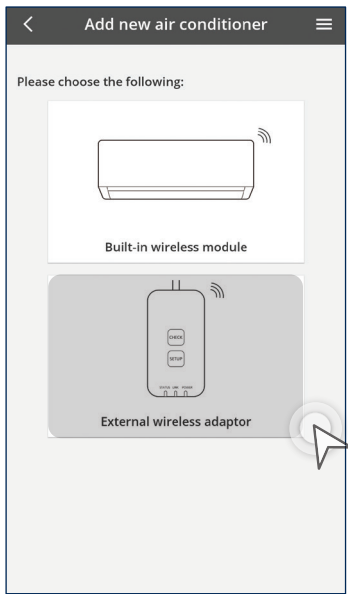
STEP 1

Tap the “+” icon.



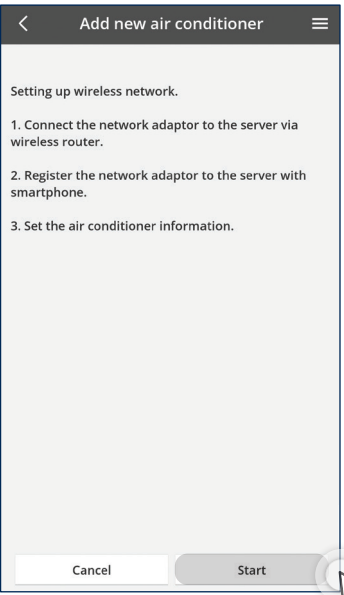
STEP 2

Choose “Air Conditioner”.



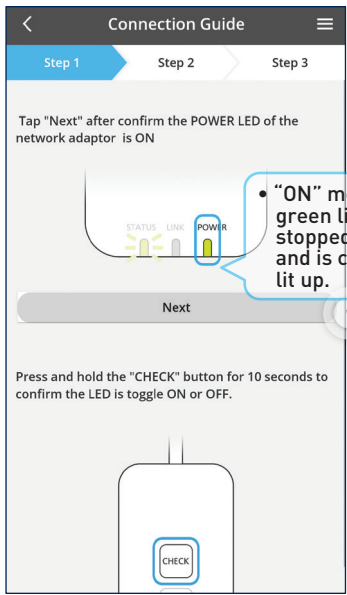
STEP 3

Choose “External Wireless Adaptor”.



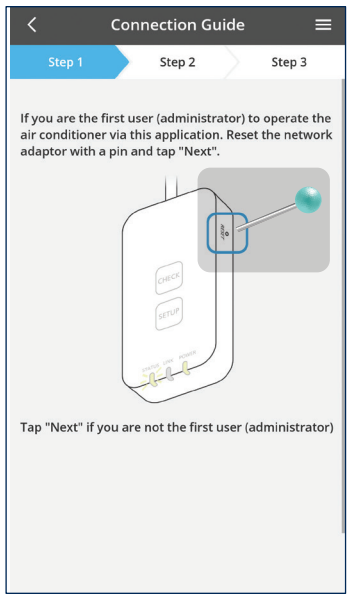
STEP 4

Tap “Start”.



STEP 5

Tap “Next”.
Make sure POWER LED is ON and then tap “Next”.

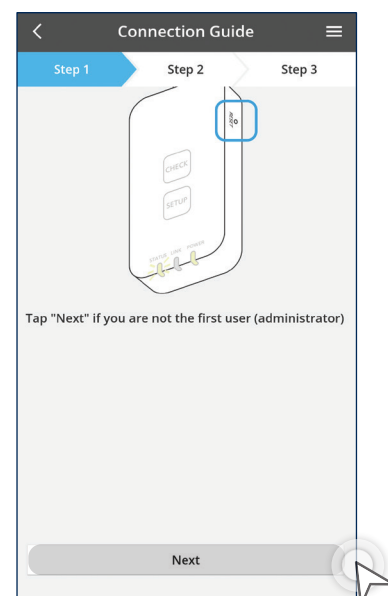


STEP 6

Reset the network adaptor with a pin.

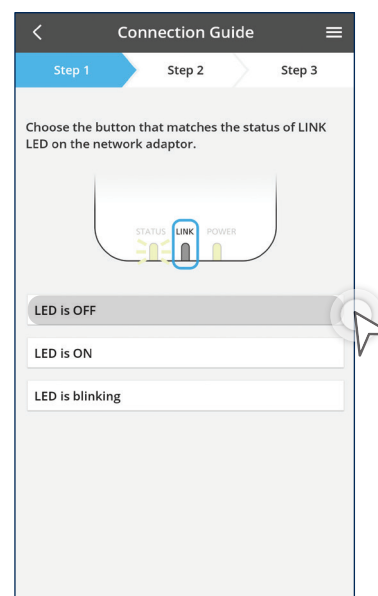
4.2 Add New Units to Groups

Add New Air Conditioner Units (External Adaptor) continues...



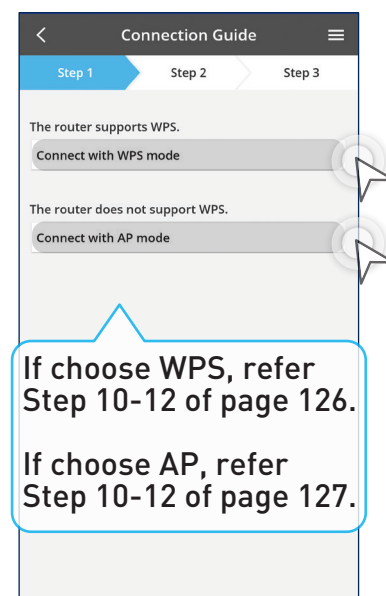
STEP 7

Tap "Next".



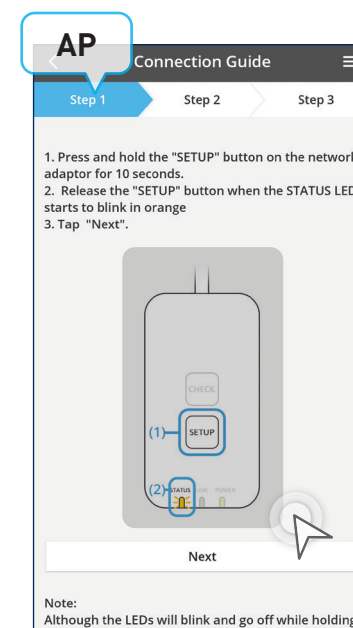
STEP 8

Choose "LED is OFF".



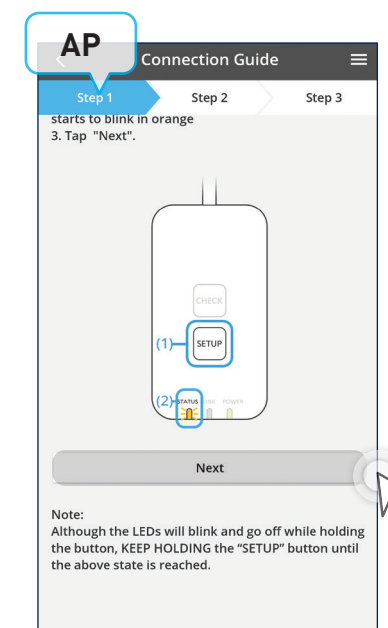
STEP 9

Choose to connect using WPS or AP.
**AP mode can only use with (Android 5.0 & IOS 11.0) and above.



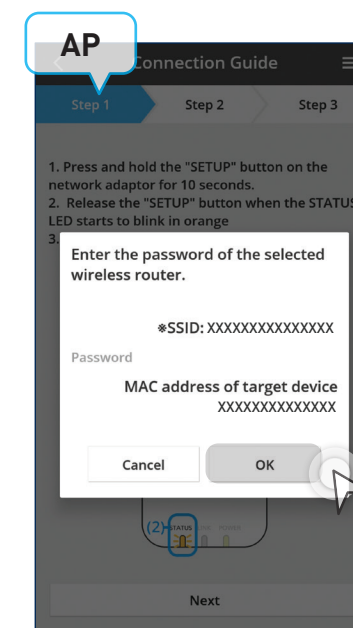
STEP 10

Press "SETUP" continuously until "STATUS LED" becomes orange and then release setup button immediately.



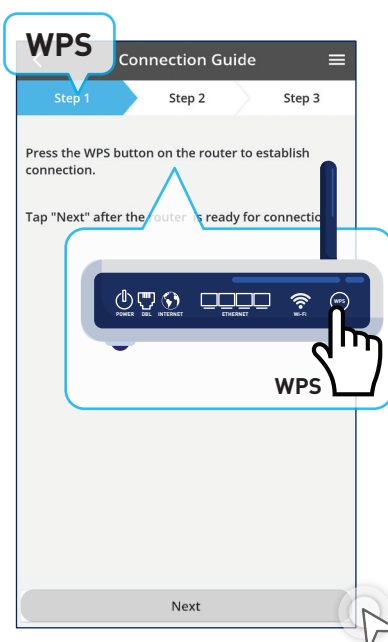
STEP 11

Tap "Next".



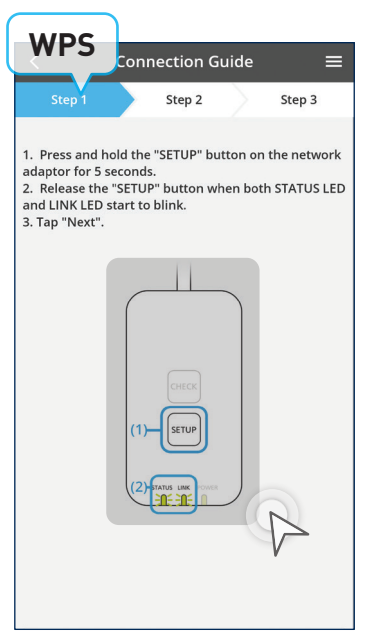
STEP 12

The device will connect to the same wireless connection that your mobile phone is connected to, enter your wireless connection password and tap "OK". Go to Step 13.



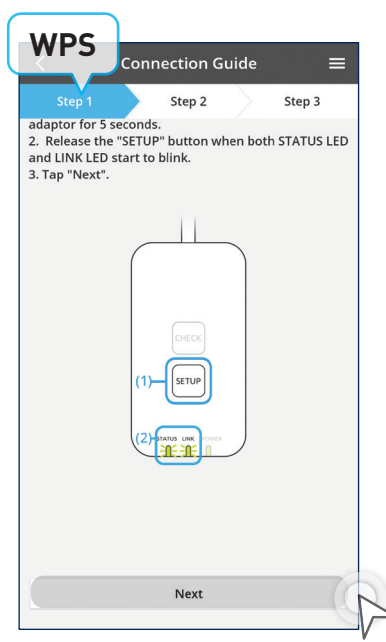
STEP 10

Press the WPS button on router and tap "Next".



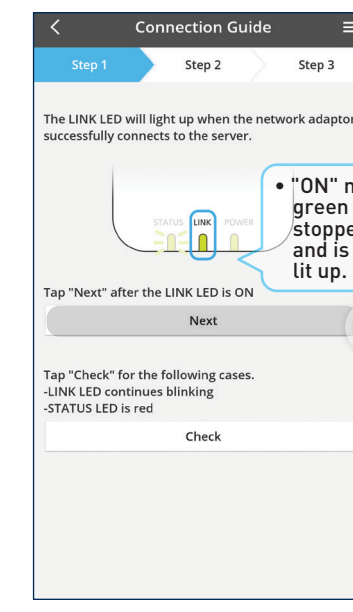
STEP 11

Press "SETUP" continuously until "STATUS LED and LINK LED" start to blink simultaneously and then release setup button immediately.



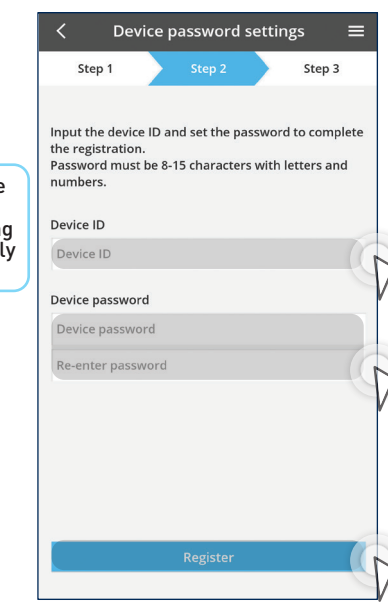
STEP 12

Tap "Next".
Go to Step 13.



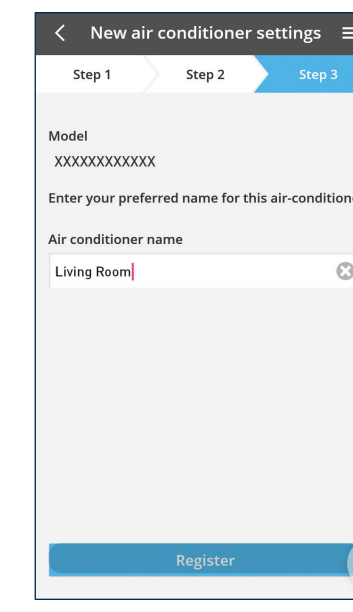
STEP 13

When "POWER LED" and "LINK LED" are ON, means the device has successfully connected to the wireless network, tap "Next".



STEP 14

Key in Device ID and password then tap "Register".



STEP 15

Set air conditioner name then tap "Register". "POWER LED", "STATUS LED" and "LINK LED" will be ON once registration is completed.