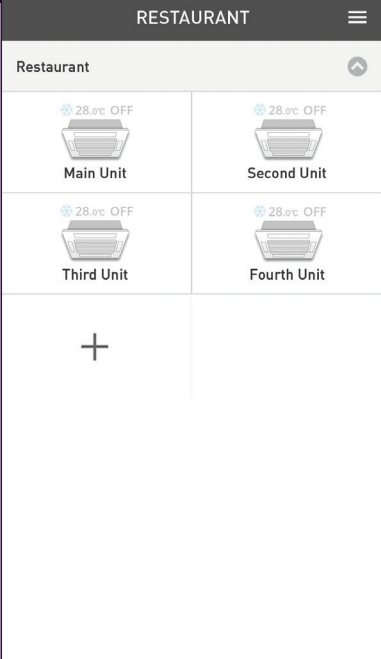


4.3 Manage & Assign Additional Users

Manage & Assign Additional Users.

Assign other users such as co-workers to control selected air conditioners.



Admin (Owner)

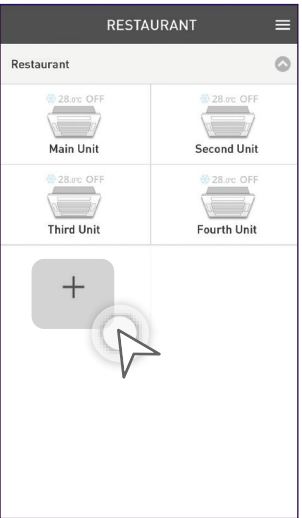
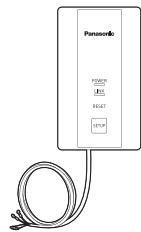
Restaurant Manager

Employee A

Employee B

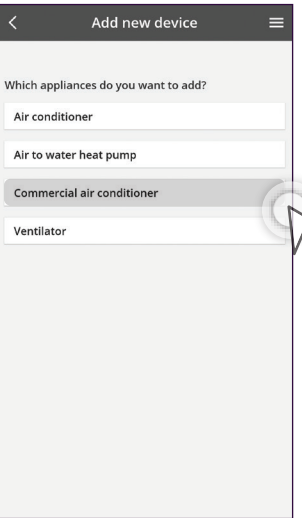


Add Additional Users (WLAN Adaptor).



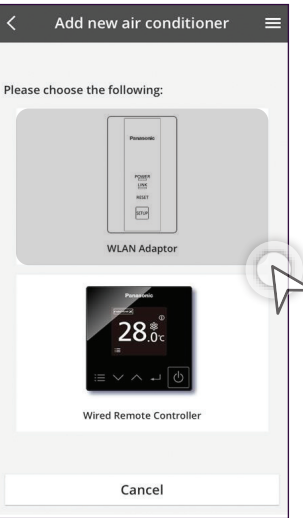
STEP 1

Tap the "+" icon.



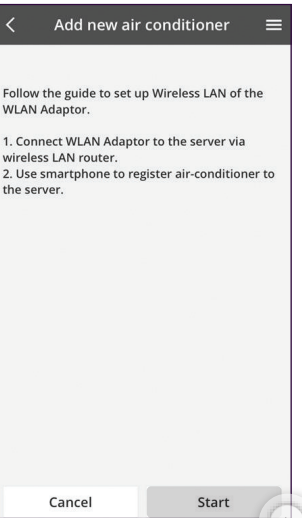
STEP 2

Select "Commercial air conditioner".



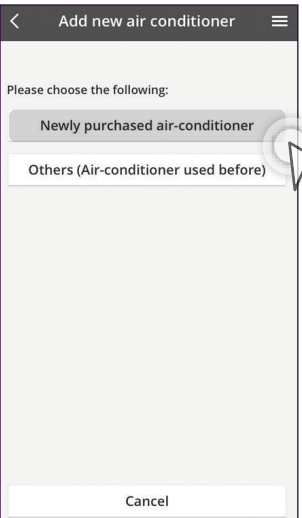
STEP 3

Select "WLAN Adaptor".



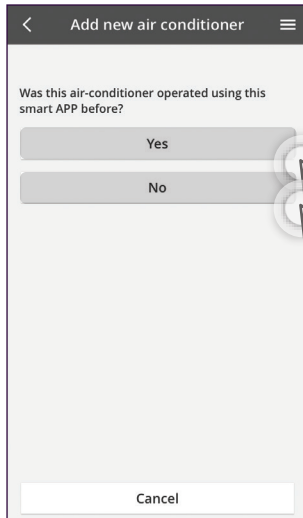
STEP 4

Tap "Start".



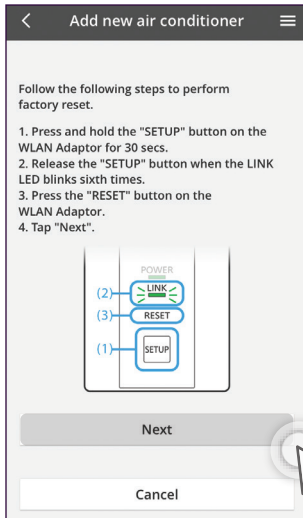
STEP 5

Select "Newly purchased air-conditioner".



STEP 6

If "Yes" go to Step 9. If "No" proceed to Step 8.

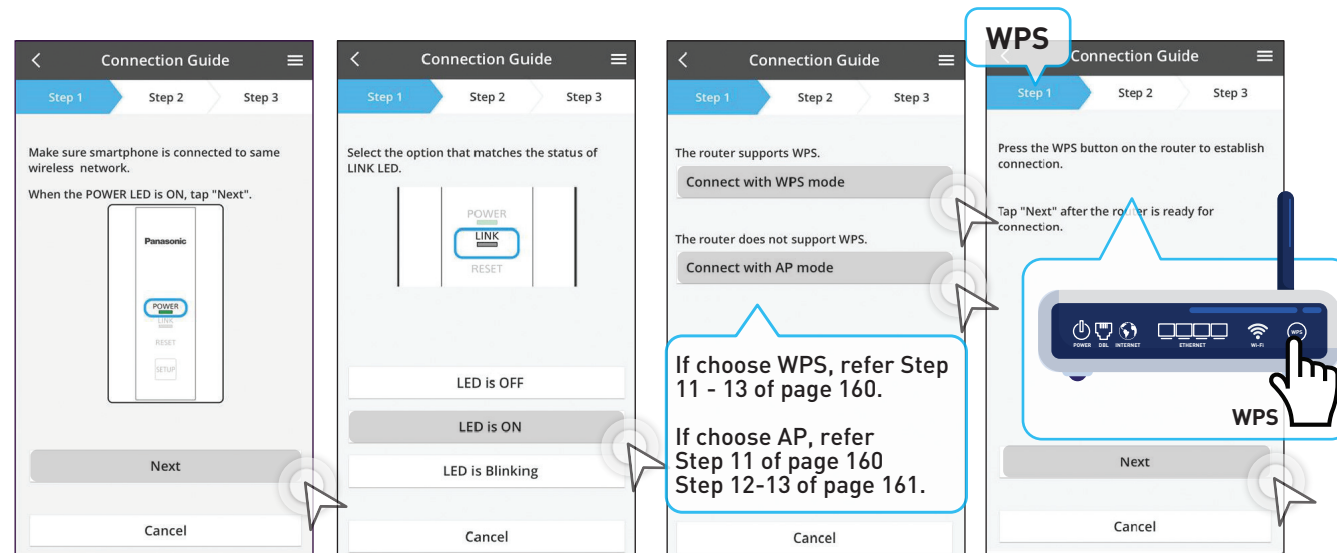


STEP 7

a) Press and hold the "SETUP" button on the WLAN Adaptor for 30 seconds.
b) Release the "SETUP" button when the LINK LED blinks 6 times.
c) Press the "RESET" button on the WLAN then tap "Next".

4.3 Manage & Assign Additional Users

Add Additional Users (WLAN Adaptor) continues...

**STEP 8**

When POWER LED is ON then tap "Next".

STEP 9

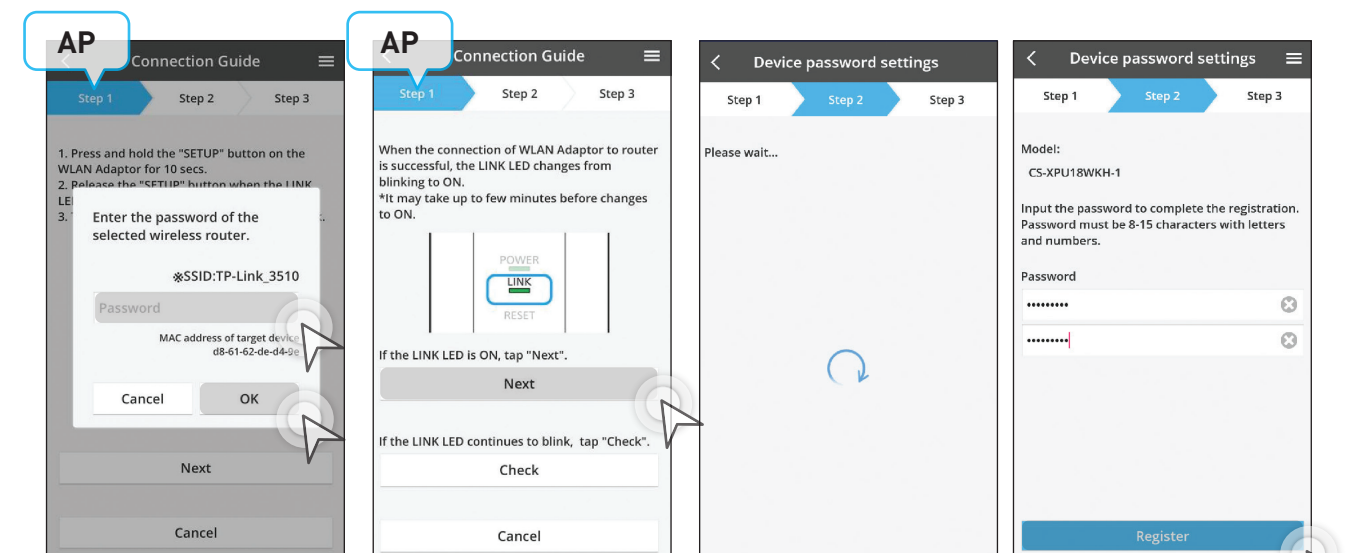
Tap "LED is ON".

STEP 10

Choose to connect using WPS or AP. **AP mode can only use with (Android 5.0 & IOS 11.0) and above.

STEP 11

Press the WPS button on router then tap "Next".

**STEP 12**

Key in Password then tap "OK".

STEP 13

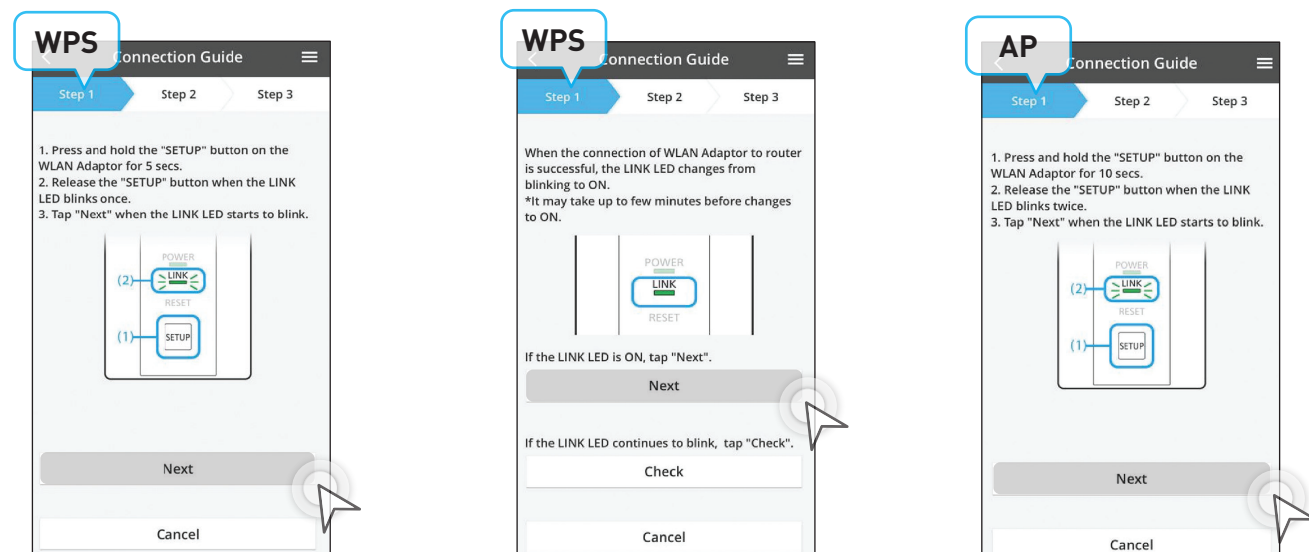
Tap "Next" when LINK LED is ON. Go to Step 14.

STEP 14

Please wait a while.

STEP 15

Key in Password then tap "Register".

**STEP 12**

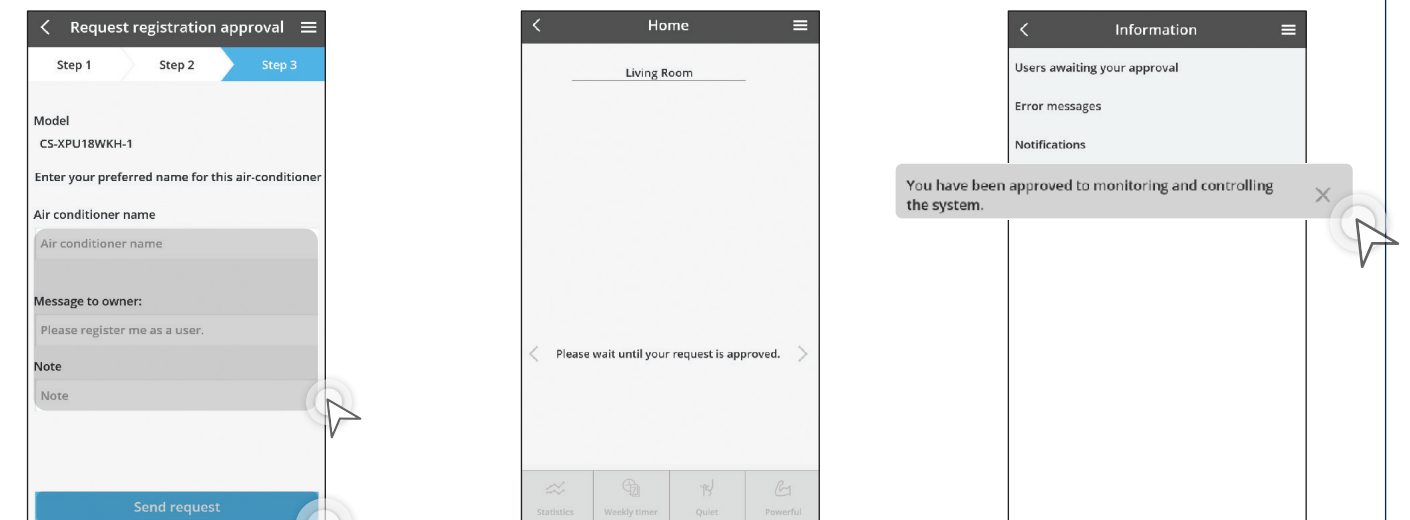
- Press and hold the "SETUP" button on the WLAN Adaptor for 30 seconds.
- Release the "SETUP" button when the LINK LED blinks once.
- Tap "Next" when LINK LED starts to blink.

STEP 13

When LINK LED is ON, then tap "Next". Go to Step 14.

STEP 11

- Press and hold the "SETUP" button on the WLAN adaptor for 10 seconds
- Release the "SETUP" button when the LINK LED blinks twice.
- Tap "Next" when the LINK LED starts to blink.

**STEP 16**

Name the air conditioner, and enter Message to owner and Note. Tap "Send request" once completed.

STEP 17

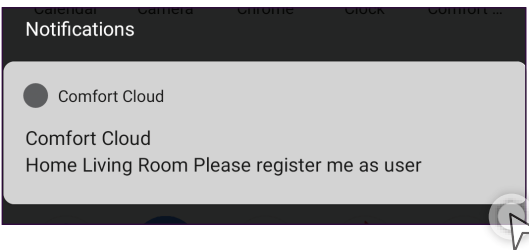
Please wait while admin approves your request.

STEP 18

You will receive notifications once your request is approved by the admin.

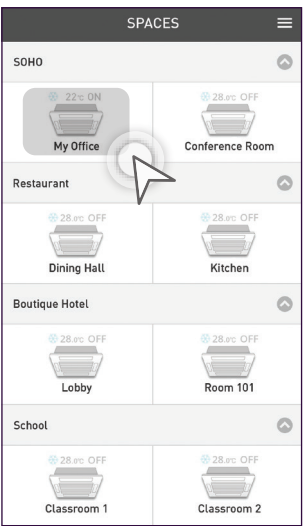
4.3 Manage & Assign Additional Users

Approve Additional Users (Admin).



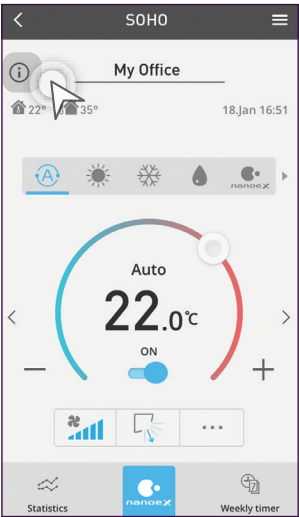
STEP 1

The admin user will receive a notification for additional user registration if the user has allowed Panasonic Comfort Cloud to send notifications.



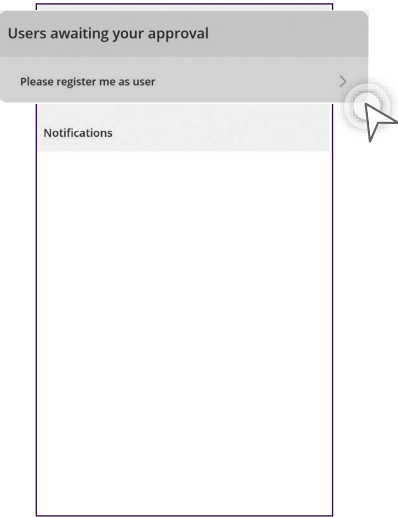
STEP 2

Select the air conditioner.



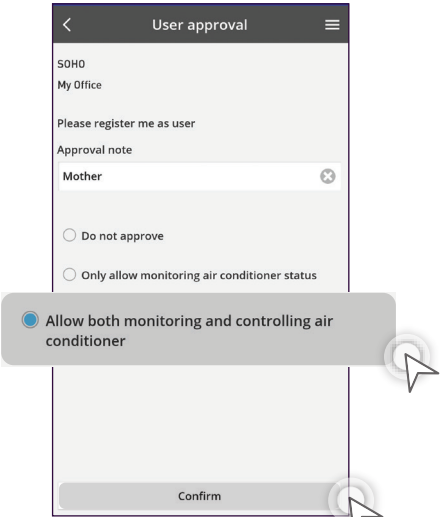
STEP 3

Tap the "i" notification button.



STEP 4

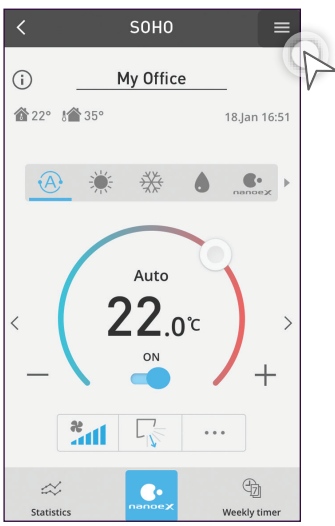
Tap the message.



STEP 5

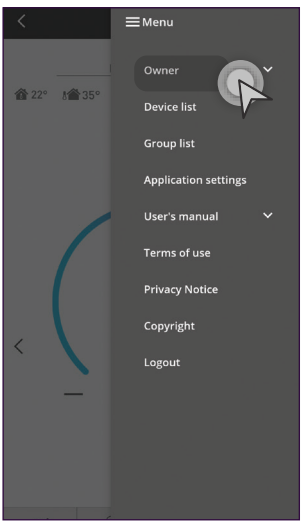
Choose the approval level to share with additional user then tap "Confirm".

Check User List.



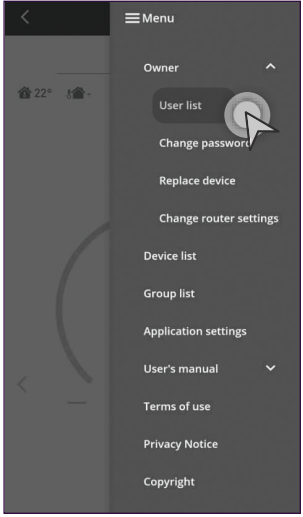
STEP 1

Tap the "☰" on the top right-hand corner of your screen.



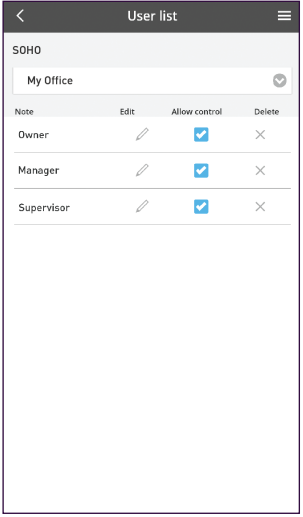
STEP 2

Tap "Owner" to expand the menu.



STEP 3

Select "User list".



STEP 4

Admin can see which user can control the particular air conditioner.