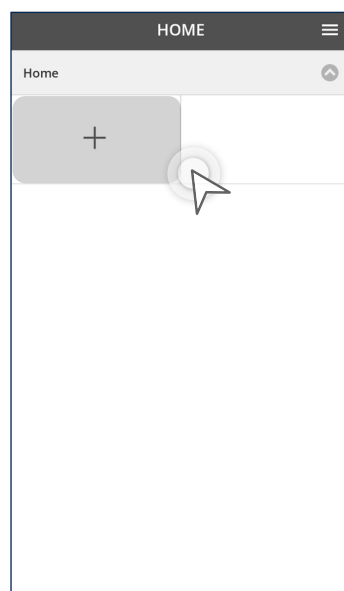
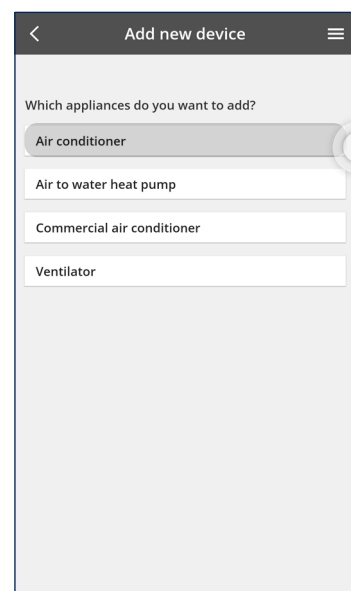


4.2 Add New Units to Groups

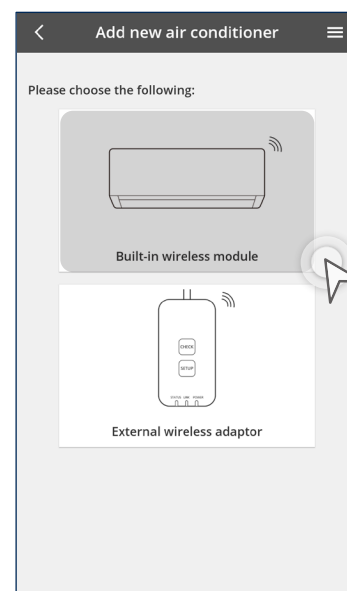
Add New Air Conditioners (Built-In).

**STEP 1**

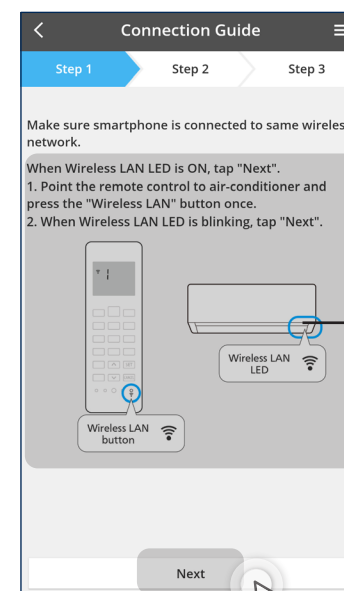
Tap the “+” icon.

**STEP 2**

Choose “Air conditioner”.

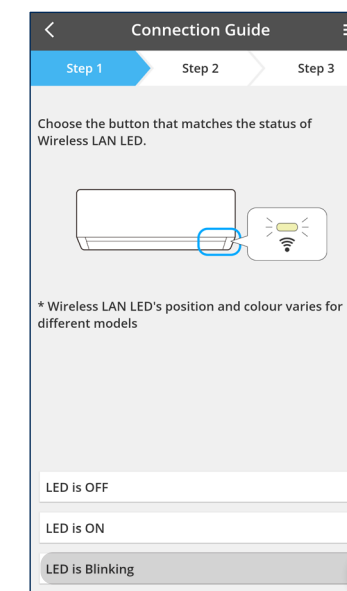
**STEP 3**

Choose “Built-in wireless module”.

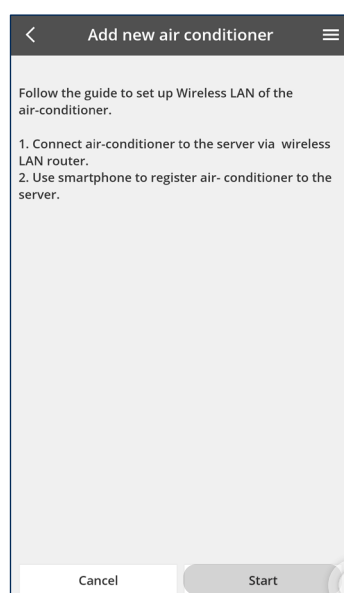
**STEP 7**

- Point the remote controller towards the air-conditioner and press the “Wi-Fi” button once to hear a “BEEP” sound.
- When the light “Wi-Fi” on the air conditioner starts blinking then tap “Next”.

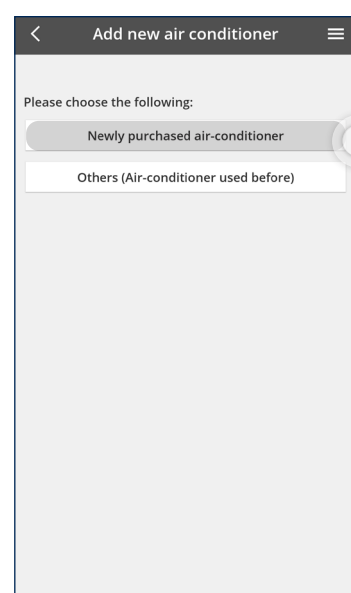
* Can be white or blue light depending on your model.

**STEP 8**

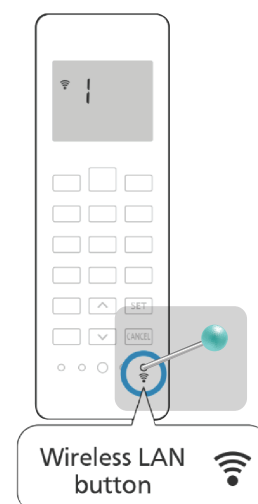
Choose “LED is Blinking”.

**STEP 4**

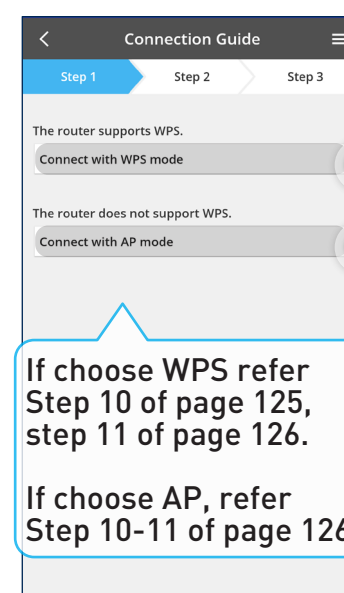
Tap “Start”.

**STEP 5**

Select “Newly purchased air-conditioner”.

**STEP 6**

Prepare your air-conditioner remote controller and a pin.

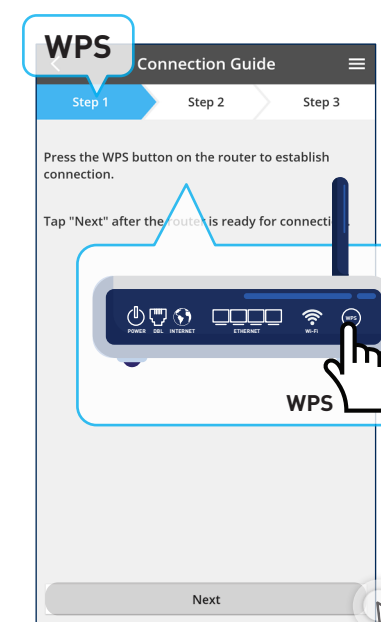


If choose WPS refer Step 10 of page 125, step 11 of page 126.

If choose AP, refer Step 10-11 of page 126.

STEP 9

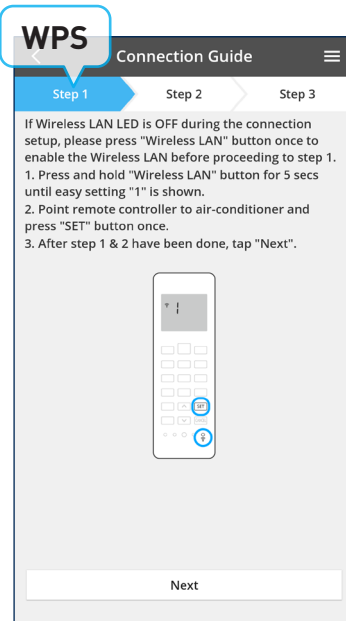
Choose to connect using WPS or AP.
**AP mode can only use with (Android 5.0 & iOS 11.0) and above.

**STEP 10**

Press the WPS button on router, then tap “Next”.

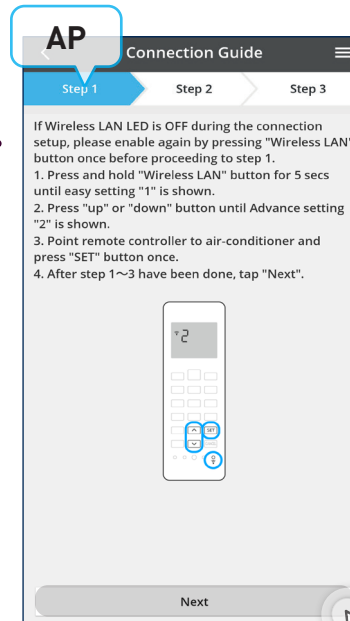
4.2 Add New Units to Groups

Add New Air Conditioners (Built-In) continues...



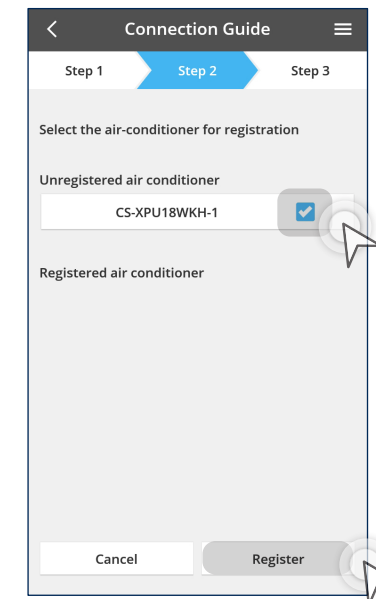
STEP 11

- Do not point your remote controller at the unit.
- Take your remote control and press "W" and hold for 5 seconds until you see "1".
- Now point remote controller at the unit and press "SET" to hear a beep sound.
- Go to Step 12.



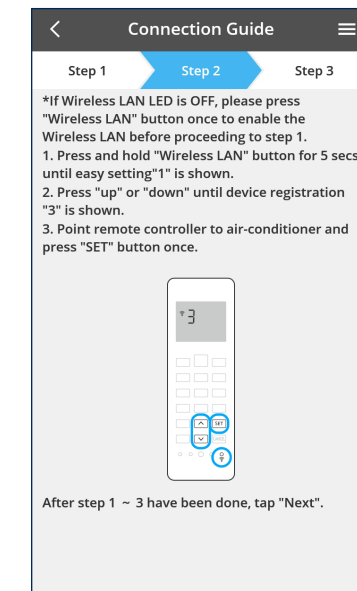
STEP 10

- Do not point your remote controller at the unit.
- Take your remote control and press "W" and hold for 5 seconds until you see "1" then press up/down to "2".
- Now point remote controller at the unit and press "SET" to hear a beep sound.



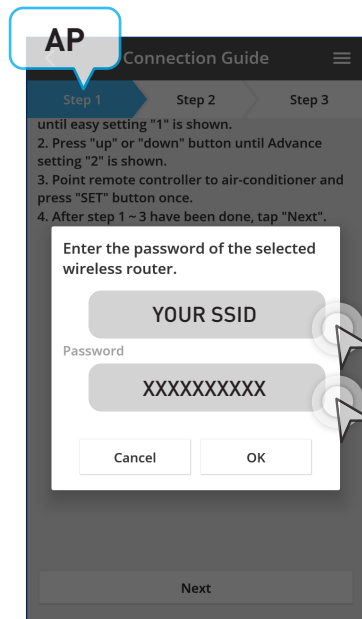
STEP 14

Select the air conditioner then tap "Register".



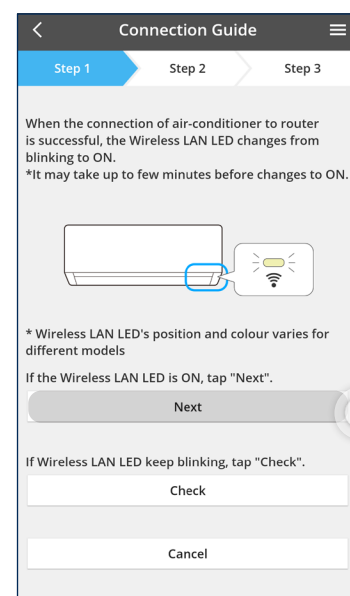
STEP 15

- Do not point your remote controller at the unit.
- Take your remote control and press "W" and hold for 5 seconds until you see "1" then press up/down to "3".
- Now point remote control at unit and press "SET" to hear a beep sound.



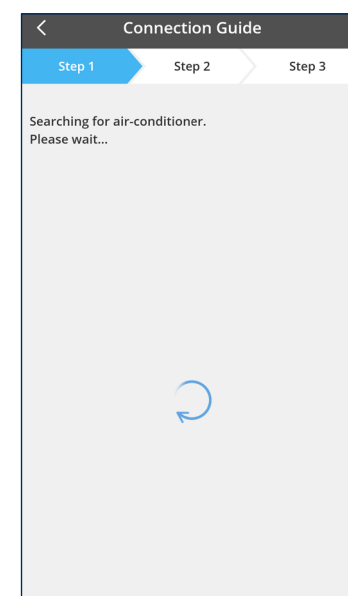
STEP 11

The unit will connect to the same wireless connection that your mobile phone is connected to, enter your wireless connection password and tap "OK". Go to Step 12.



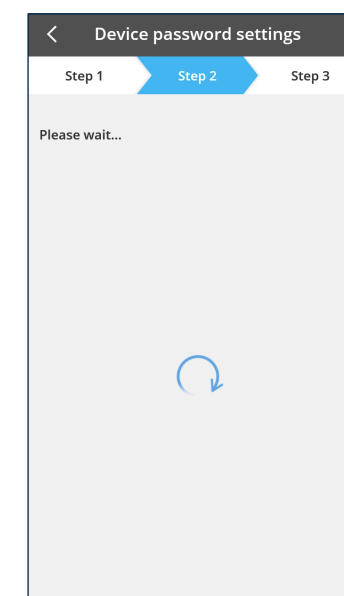
STEP 12

- Connection is successful when the Wireless LAN LED is ON, then tap "Next".
- Permanent light and not blinking means "ON". LED Colour depends on model.



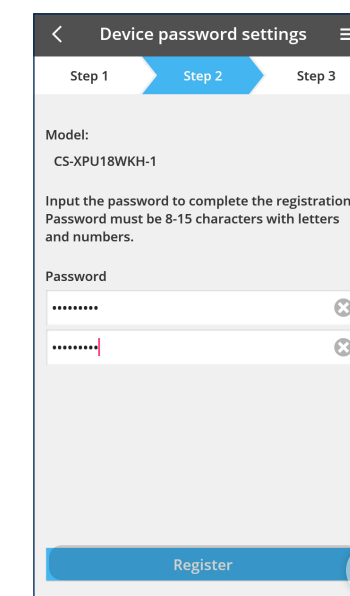
STEP 13

Searching for air-conditioner.



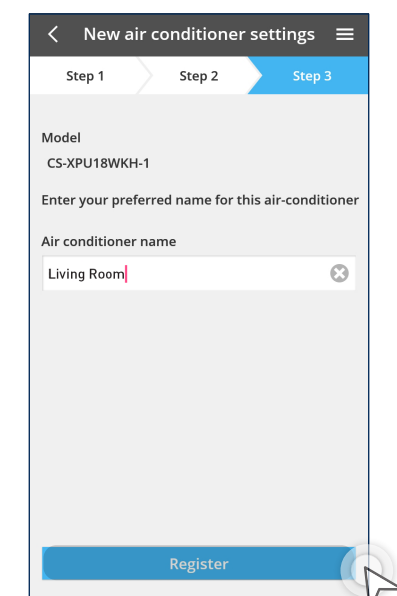
STEP 16

Wait for a while.



STEP 17

Key in Password then tap "Register".



STEP 18

Set air conditioner name then tap "Register". "POWER LED", "STATUS LED" and "LINK LED" will be ON once registration is completed.