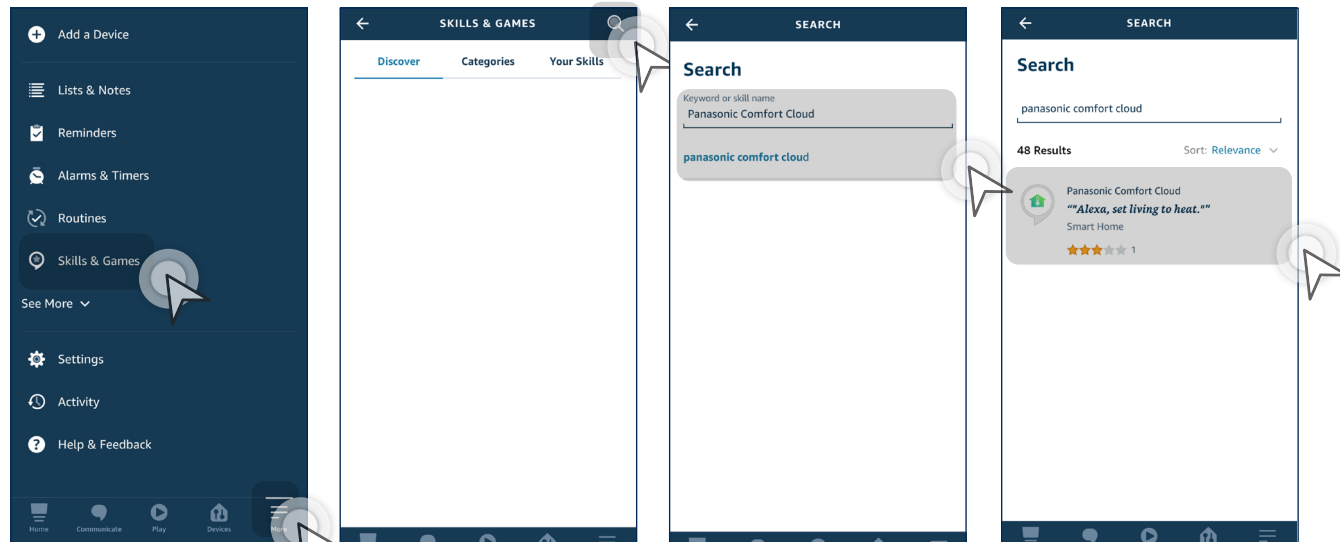


4.5 Voice Control Settings

Link your Panasonic Comfort Cloud App to Alexa.


STEP 1

Tap "More" to access this screen and then choose "Skills and Games".

STEP 2

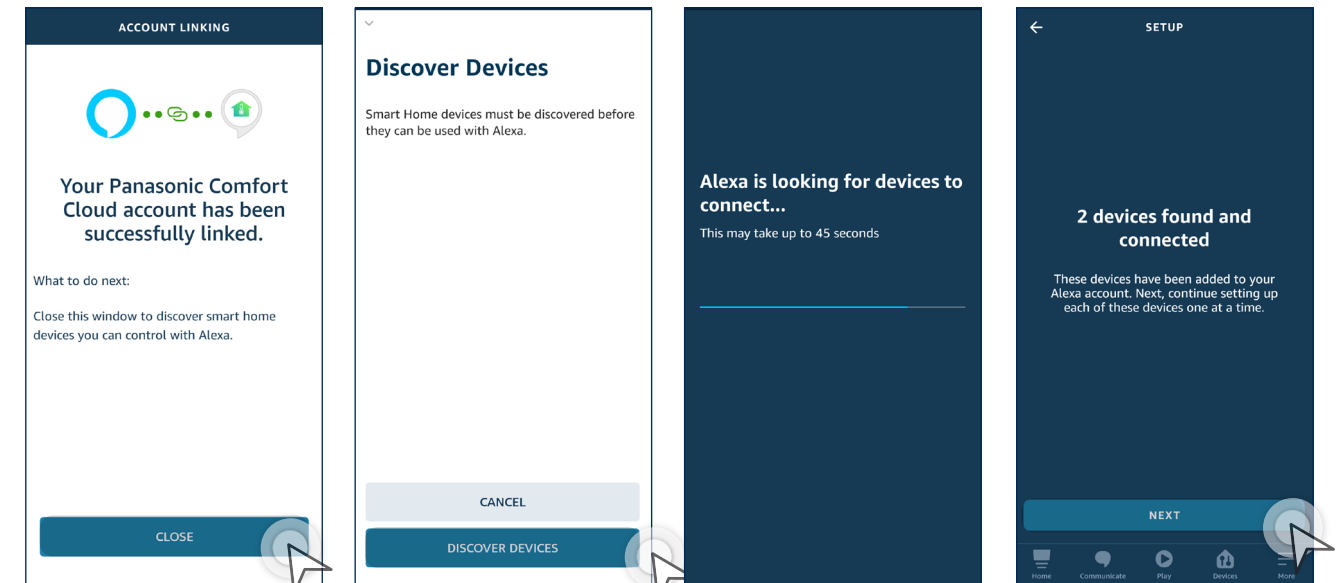
Tap "🔍".

STEP 3

Search for "Panasonic Comfort Cloud".

STEP 4

Select "Panasonic Comfort Cloud".


STEP 9

Tap "CLOSE".

STEP 10

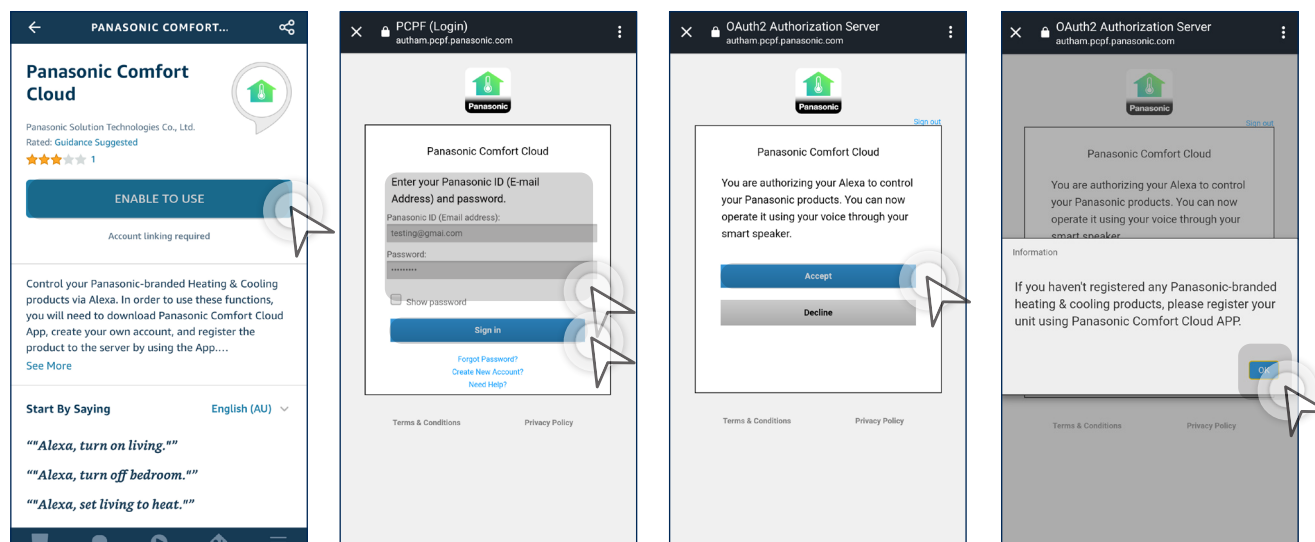
Select "DISCOVER DEVICES".

STEP 11

Wait.

STEP 12

Tap "NEXT" after devices found.


STEP 5

Tap "ENABLE TO USE".

STEP 6

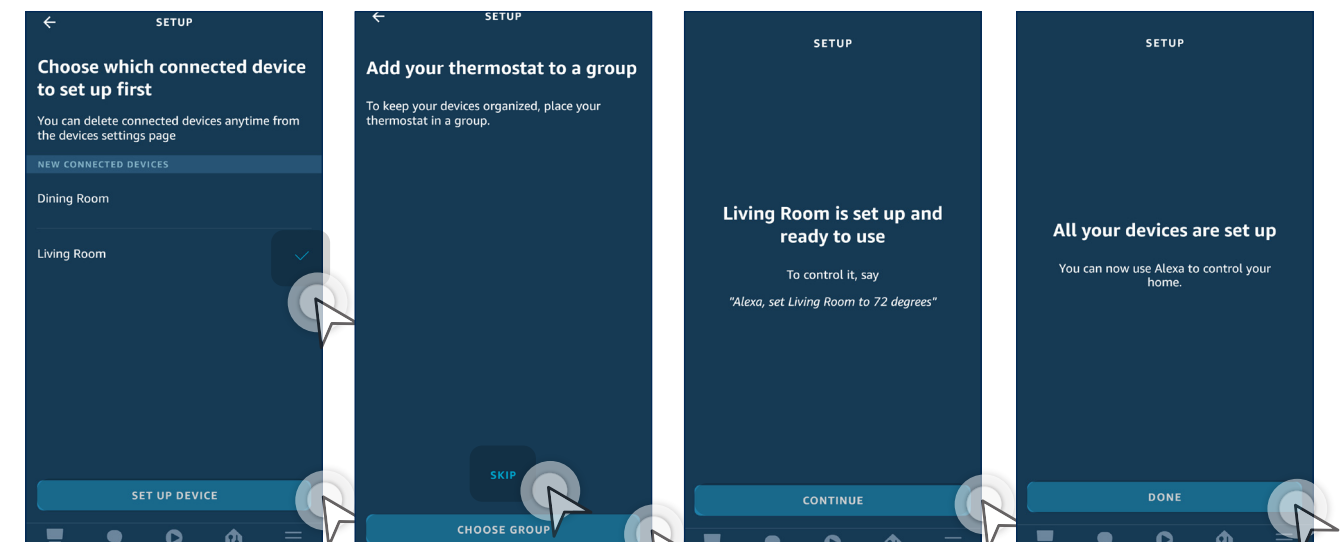
Key in your Panasonic Comfort Cloud ID and Password, then tap "SIGN IN".

STEP 7

Tap "Accept".

STEP 8

Tap "OK".


STEP 13

Select the air-conditioner unit then tap "SET UP DEVICES".

STEP 14

You may choose to add your selected air-conditioner to a group or select "SKIP".

STEP 15

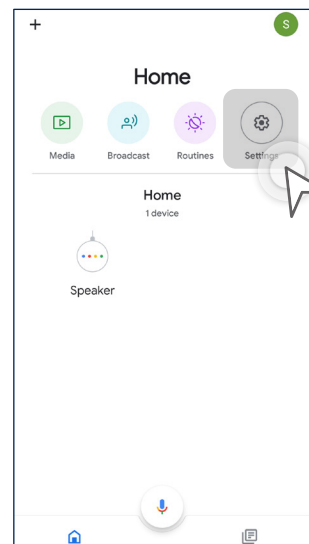
Tap "CONTINUE".

STEP 16

When your devices are ready, then tap "DONE".

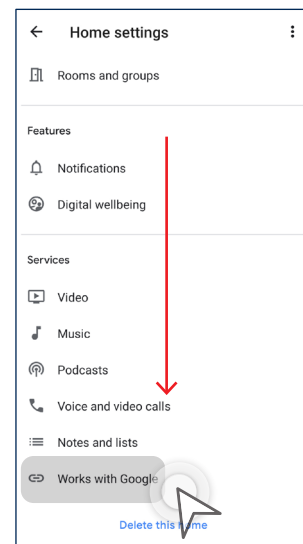
4.5 Voice Control Settings

Link your Panasonic Comfort Cloud App to Google Home.



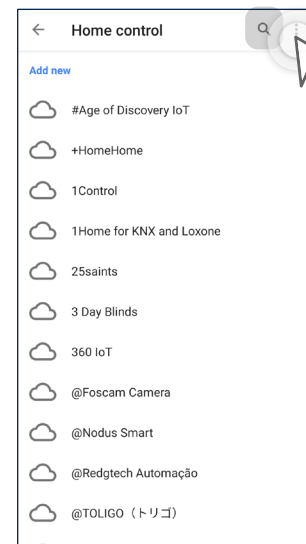
STEP 1

Tap "Setting" in the Home screen.



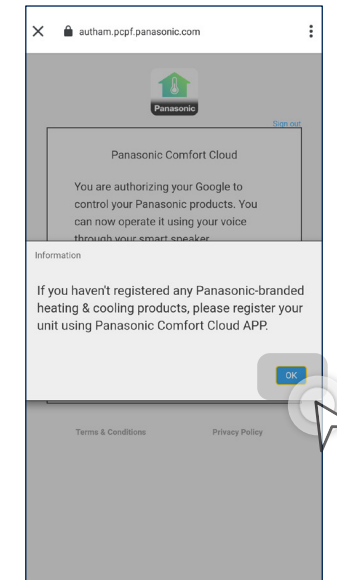
STEP 2

Scroll down to "Works with Google" and select it.



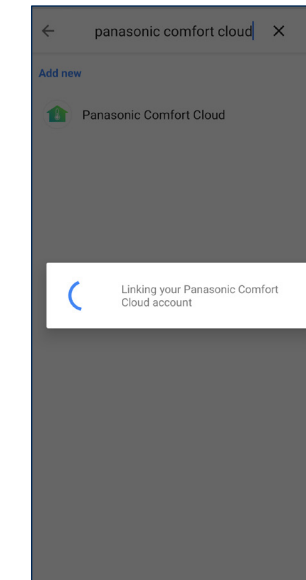
STEP 3

Tap "Q".



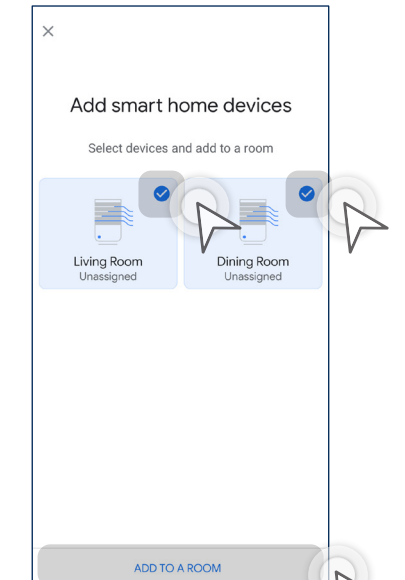
STEP 7

Tap "OK".



STEP 8

Wait for account linking.



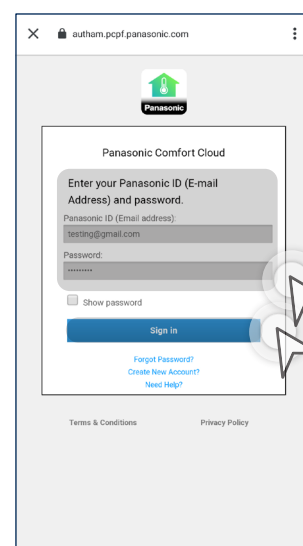
STEP 9

Select your air conditioner unit then tap "ADD TO A ROOM".



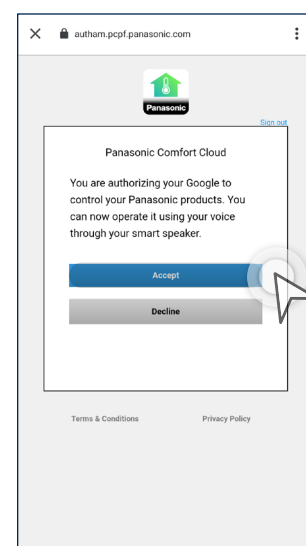
STEP 4

Search for "Panasonic Comfort Cloud" and tap it.



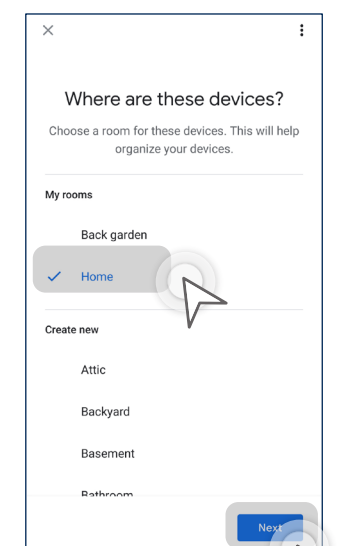
STEP 5

Key in your Panasonic Comfort Cloud ID and Password, then tap "Sign in".



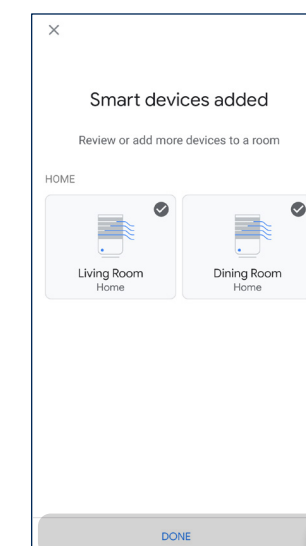
STEP 6

Tap "Accept".



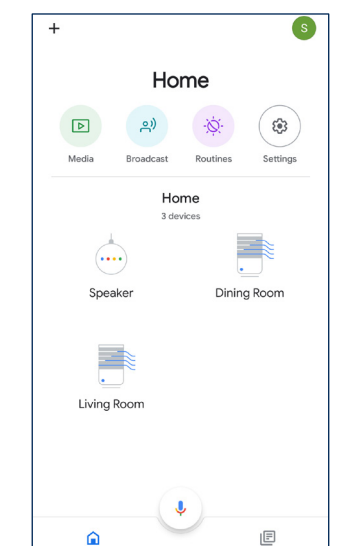
STEP 10

Select the room to be added.



STEP 11

Select the room to be added then tap "DONE".



STEP 12

Your devices are now ready for use.