

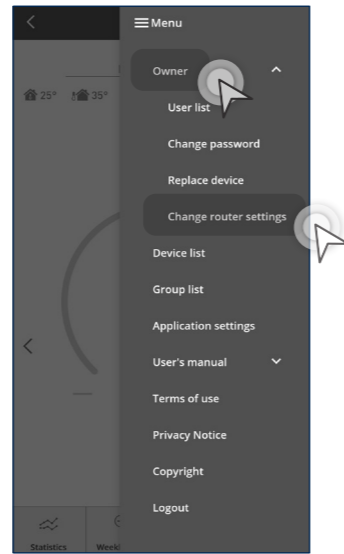
4.4 New Account Registration, Change Router Settings & Device Password

# Change Router Settings.



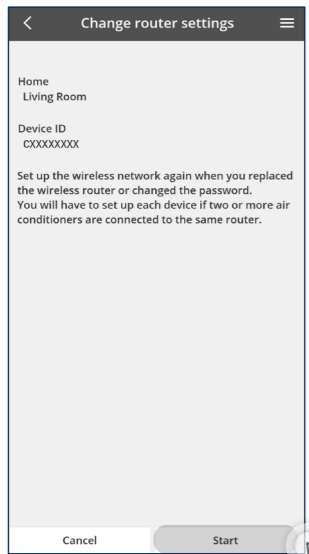
**STEP 1**

Tap the “☰” on the top right-hand corner of your screen.



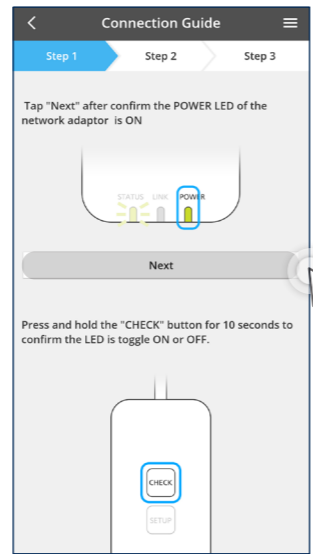
**STEP 2**

Tap “Owner” to see the drop-down options and select “Change router settings”.



**STEP 3**

After checking it is the correct device, then tap “Start”.



**STEP 4**

Make sure all 3 green lights are “ON” on your device then tap “Next”.

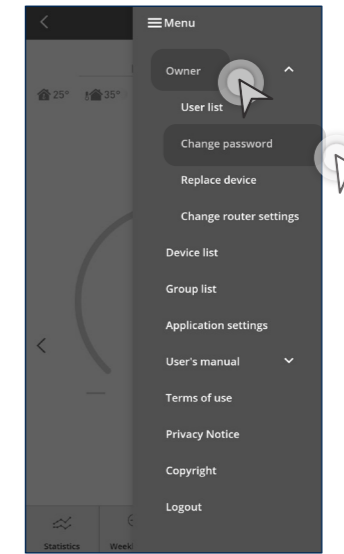
\* FOLLOW THE STEPS LISTED IN THE APP TO CONTINUE.  
\* For Built-In, follow the steps listed in the model to continue.

# Change Device Password.



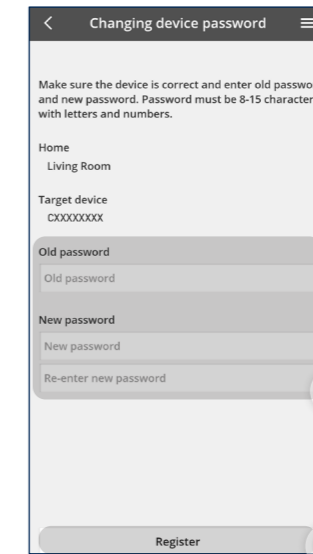
**STEP 1**

Tap the “☰” on the top right-hand corner of your screen.



**STEP 2**

Tap “Owner” to see the drop-down options and select “Change password”.



**STEP 3**

Key in old password then enter New password then tap “Register”.

\* ONCE DEVICE PASSWORD IS CHANGED. ALL USERS BESIDES ADMIN NEED TO RECONNECT.