

## 2.5 Maximising Your Energy Savings

# Intelligent Savings with ECO Mode with A.I.

ECO Mode with A.I. controls cooling efficiently by detecting the ambient temperature and maintaining the temperature with minimal energy waste.



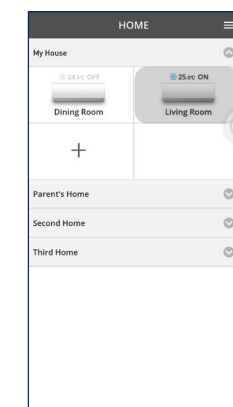
## Activate ECO mode.



Day time with sunlight: ECO Mode with A.I. prioritises on maximising cooling comfort while saving energy with ECO Mode.

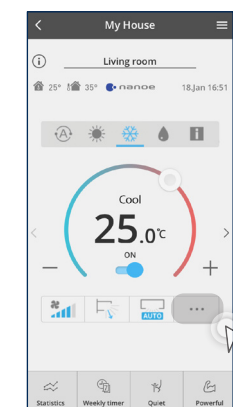


Night time with cool breeze: ECO Mode with A.I. prioritises energy saving over cooling comfort.



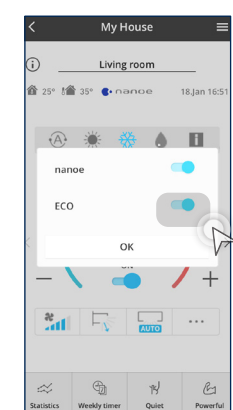
### STEP 1

Select an air conditioner from a group.



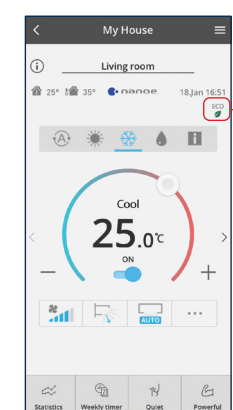
### STEP 2

Tap "... " to access additional feature.



### STEP 3

Toggle ECO "ON". (if the switch is blue means it is ON).



### STEP 4

ECO Mode with A.I (ECO) will appear below the date meaning mode is activated.