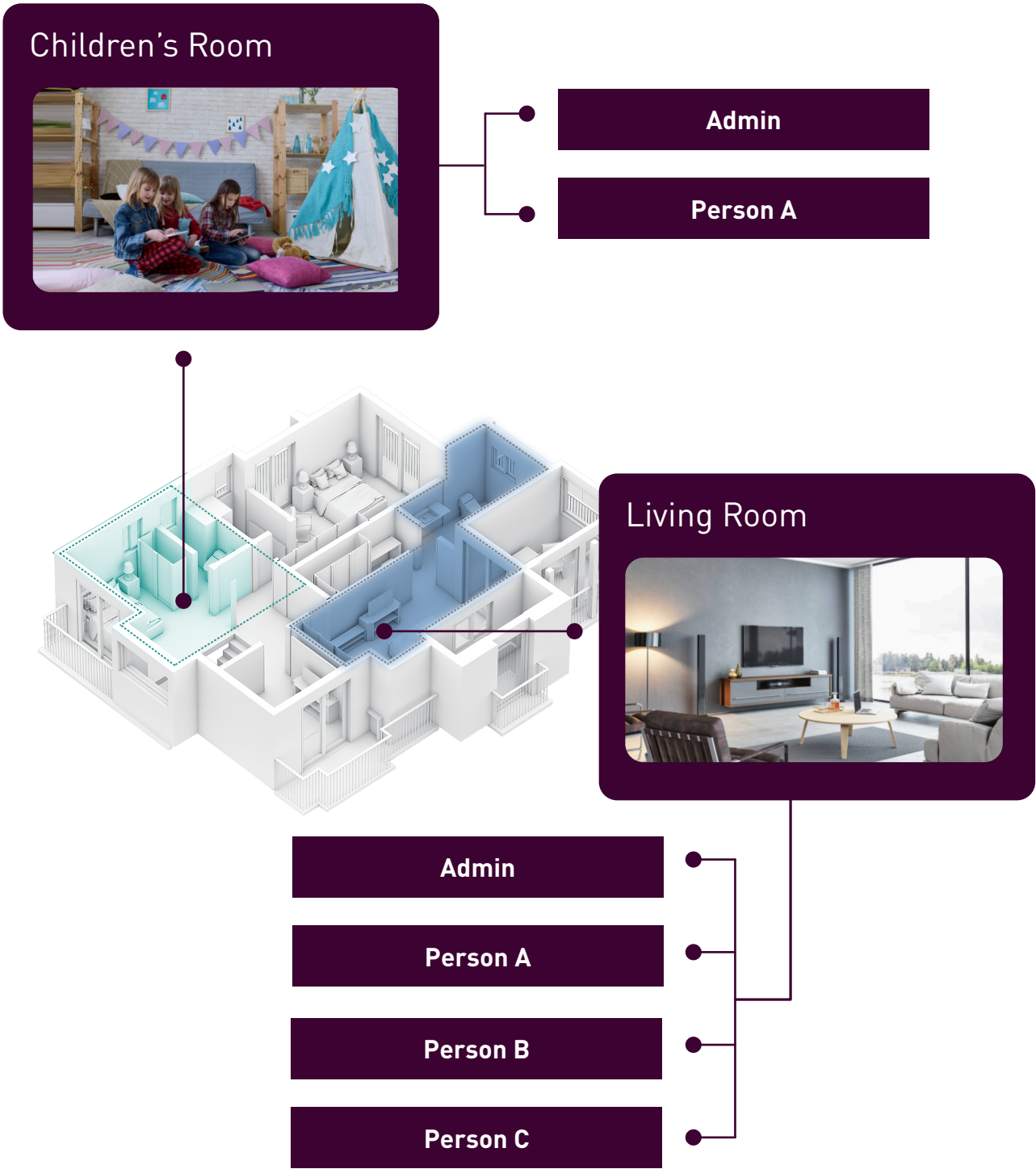


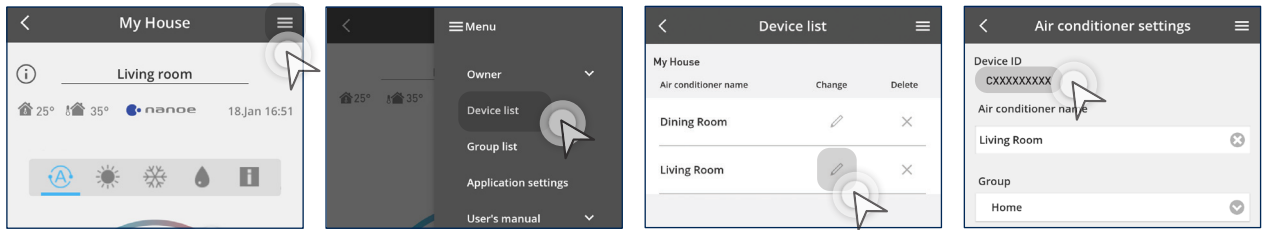
4.3 Manage & Assign Additional Users

Manage & Assign Additional Users.

Assign other users to manage air conditioner units based on location and rooms.



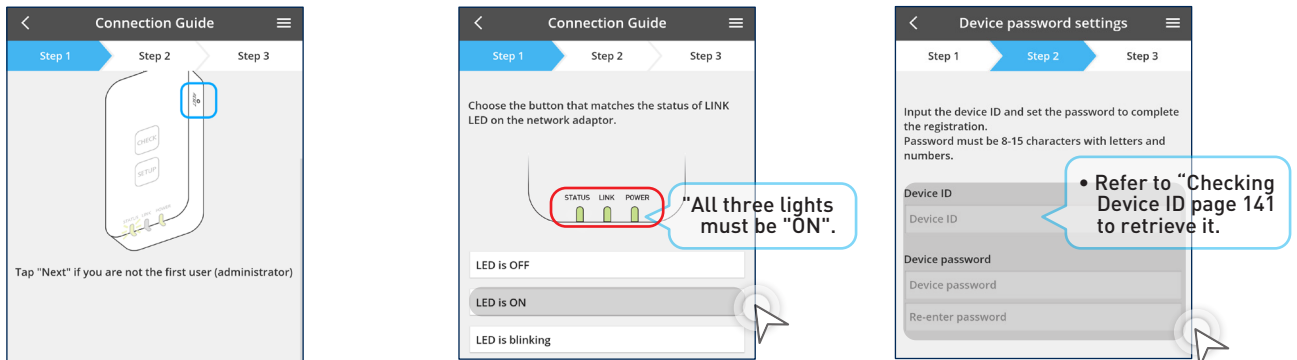
Check Device ID.



- STEP 1**
Tap the “☰” on the top right-hand corner of your screen.
- STEP 2**
Select “Device list”.
- STEP 3**
Choose your device’s location.
- STEP 4**
View your device ID and additional information.

Add Additional Users (External Adaptor).

- Please refer to (Add New Air Conditioners) on page 121, step 1 – 5 and then refer to the steps below.



- STEP 1**
Tap “Next” as additional user. Not first user.
- STEP 2**
Tap “LED is ON”.
Note: All three lights must be “ON”.
- STEP 3**
Enter Device ID and Password.
(Has to be obtained from administrator – administrator is the first person who connects to the unit first as they set the password)
Note: Refer to “Checking Device ID page 141 to retrieve it.”

4.3 Manage & Assign Additional Users

Add Additional Users (External Adaptor) continues...

STEP 4

Name the air conditioner, and enter Message to owner and Note. Tap "Send request" once completed.

STEP 5

Admin refers to "Approving Additional User" Page 144.

STEP 6

You will receive notifications once your request is approved by the admin.

Add Additional Users (Built-In).

*Please refer to (Adding New Air Conditioners) on page 124, step 1 - 4 and then refer to the steps below.

STEP 1

Select "Others (air-conditioner used before)".

STEP 2

Tap "Yes".

STEP 3

a) Point the remote controller towards the air conditioner and press the "Wi-Fi" button once to hear a "BEEP" sound.
b) When the light next to the "Wi-Fi" appears then tap "Next".

Add Additional Users (Built-In) continues...

STEP 4

Tap "LED is ON".

STEP 5

Searching for air conditioner.

STEP 6

Select the air conditioner then tap "Register".

STEP 7

Wait for a while.

STEP 8

Key in Password then tap "Register". (Has to be obtained from administrator – administrator is the first person who connects to the unit first as they set the password).

STEP 9

Name the air conditioner, and enter Message to owner and Note. Tap "Send request" once completed.

STEP 10

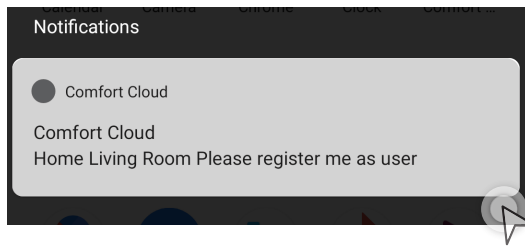
Admin refers to "Approving Additional User" Page 144.

STEP 11

You will receive notifications once your request is approved by the admin.

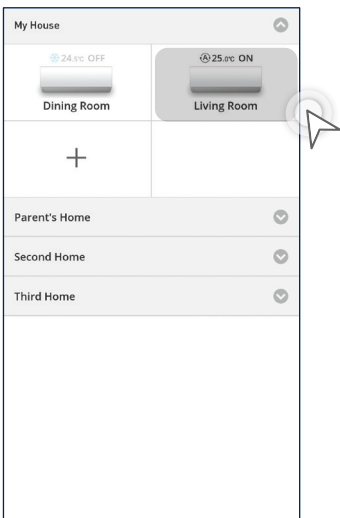
4.3 Manage & Assign Additional Users

Approve Additional Users.



STEP 1

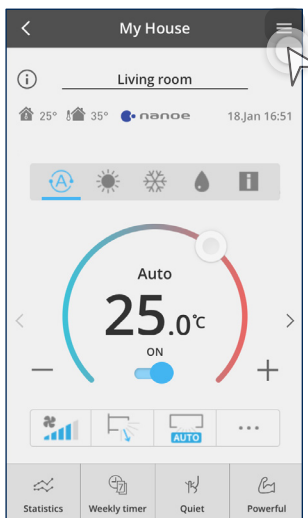
The admin user will receive a notification for additional user registration if the user has allowed Panasonic Comfort Cloud to send notifications.



STEP 2

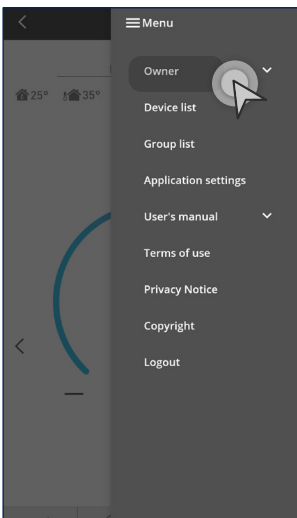
Select the air conditioner.

Check User List.



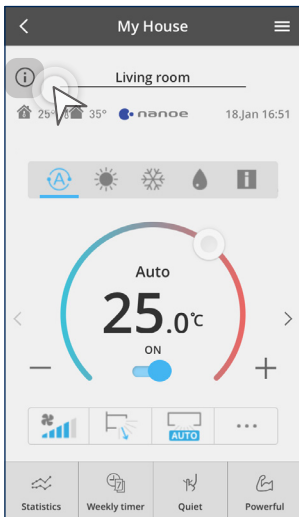
STEP 1

Tap the "☰" on the top right-hand corner of your screen.



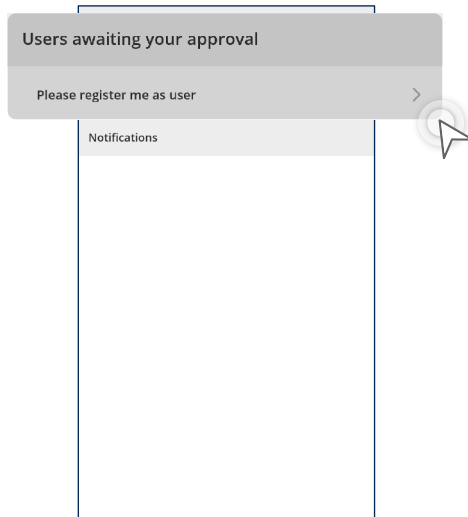
STEP 2

Tap "Owner" to expand the menu.



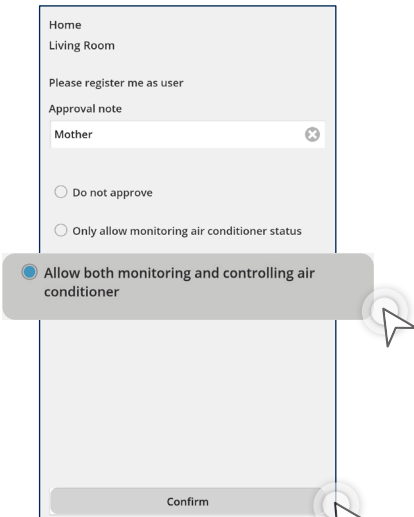
STEP 3

Tap the "i" notification button.



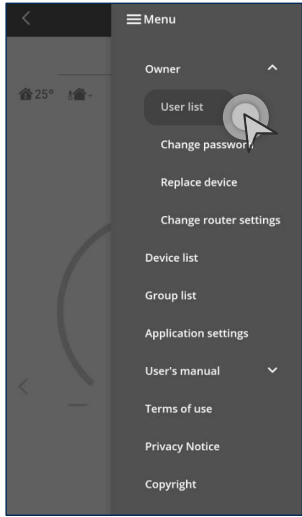
STEP 4

Tap the message.



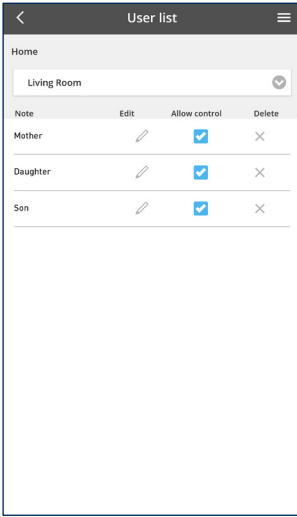
STEP 5

Choose the approval level to share with additional user then tap "Confirm".



STEP 3

Select "User list".



STEP 4

Admin can see which user can control the particular air conditioner.