

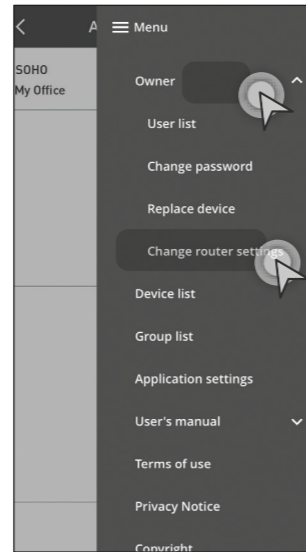
4.4 New Account Registration, Change Router Settings & Device Password

Change Router Settings.



STEP 1

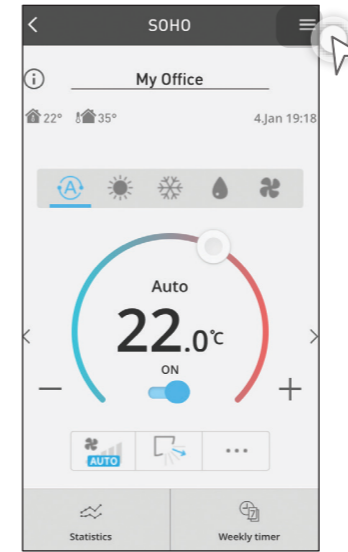
Tap the “☰” on the top right-hand corner of your screen.



STEP 2

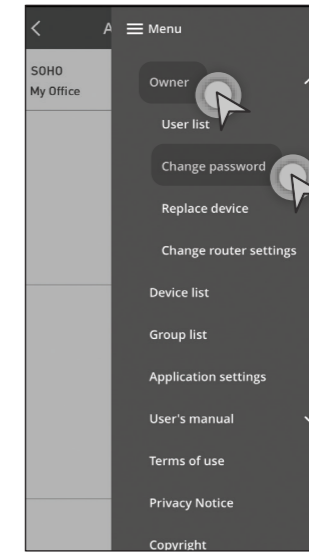
Tap “Owner” to see the drop-down options and select “Change router settings”.

Change Device Password.



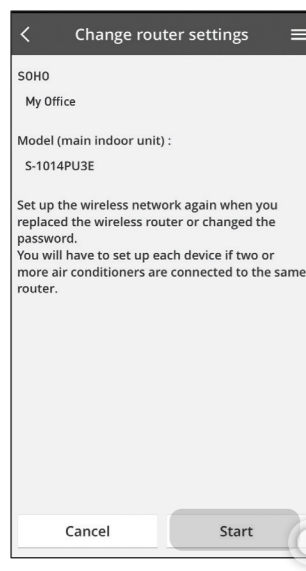
STEP 1

Tap the “☰” on the top right-hand corner of your screen.



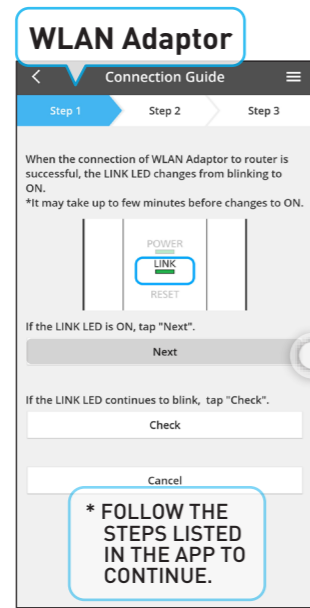
STEP 2

Tap “Owner” to see the drop-down options and select “Change password”.



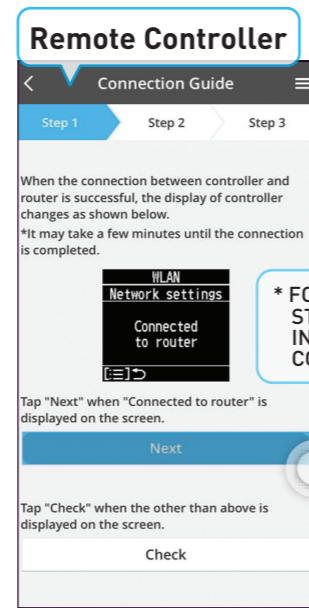
STEP 3

After checking it is the correct model name, then tap “Start”.



STEP 4

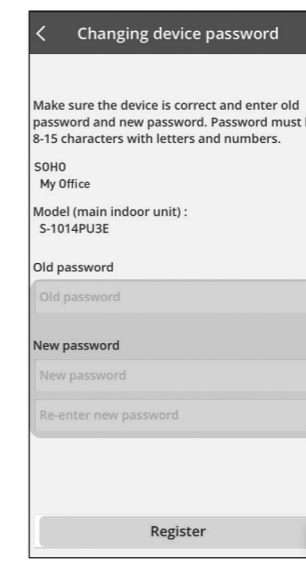
Make sure all 3 green lights are “ON” on your device then tap “Next”.



STEP 4

If connection is successful the display of the controller will show “Connected to router”. Tap “Next” when connected.

* FOLLOW THE STEPS LISTED IN THE APP TO CONTINUE.



STEP 3

Key in old password then enter New password then tap “Register”.

* ONCE DEVICE PASSWORD IS CHANGED, ALL USER BESIDES ADMIN NEED TO RECONNECT.