

4.2 Add New Units to Groups

Add New Ventilator Units to Groups.

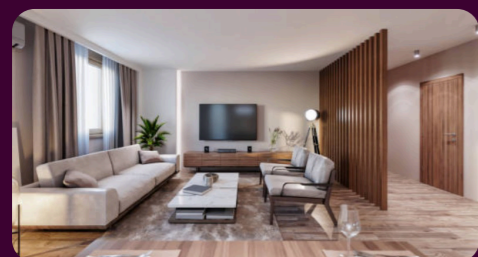
How to register your new ventilator units to existing groups.

Supply Fan

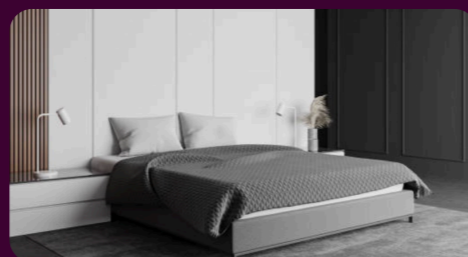


This system mechanically supplies clean air through PM2.5 filter into indoor.

Living Area



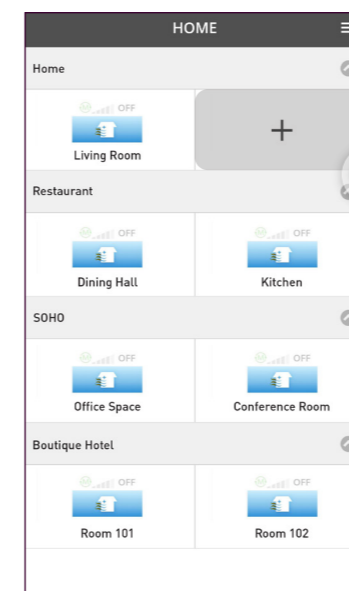
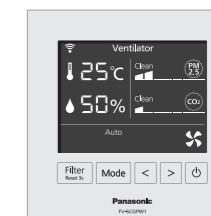
Master Bedroom



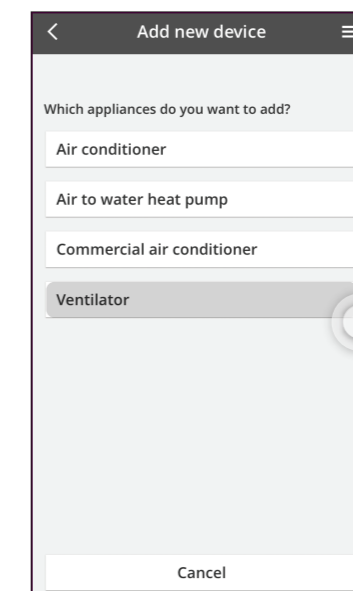
Bedroom



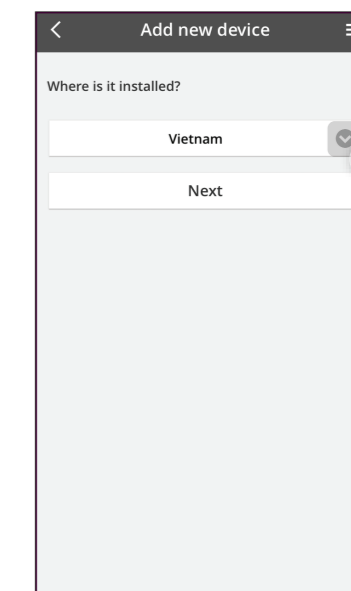
Add New Ventilator Units (IAQ Remote Controller).



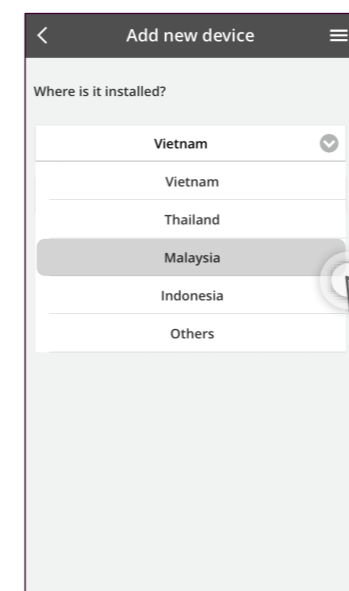
STEP 1
Tap the "+" icon.



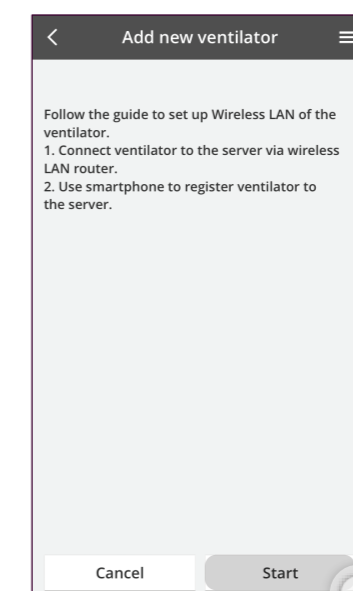
STEP 2
Select "Ventilator".



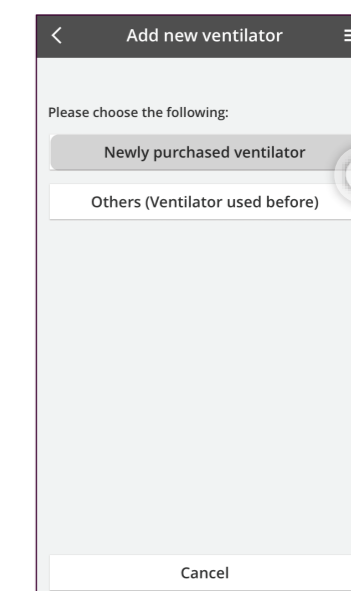
STEP 3
Tap "✓" to expand country menu.



STEP 4
Select your country and tap "Next".



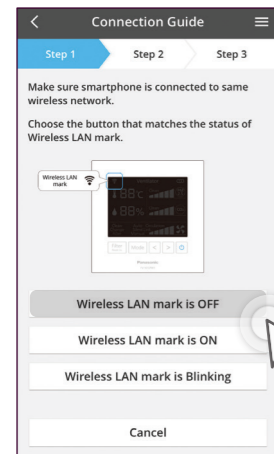
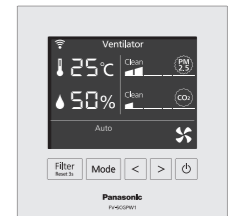
STEP 5
Tap "Start".



STEP 6
Select "Newly purchased ventilator".

4.2 Add New Units to Groups

Add New Ventilator Units (IAQ Remote Controller) continues...



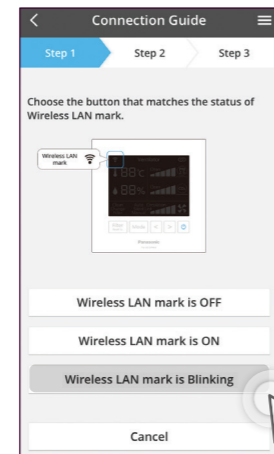
STEP 7

Select "Wireless LAN mark is OFF".



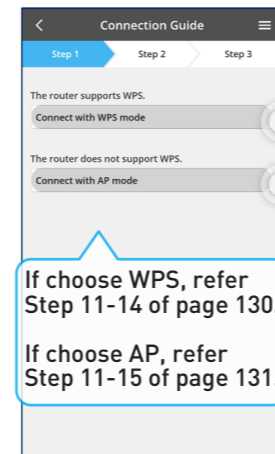
STEP 8

Press the "<" and ">" button once. When the "Wireless LAN" mark is blinking, tap "Next".



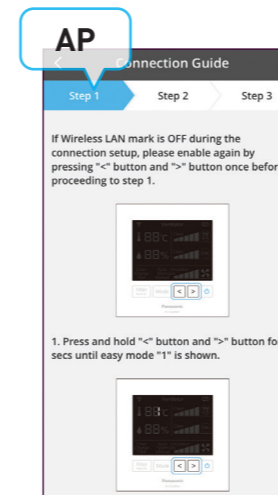
STEP 9

Select "Wireless LAN mark is Blinking".



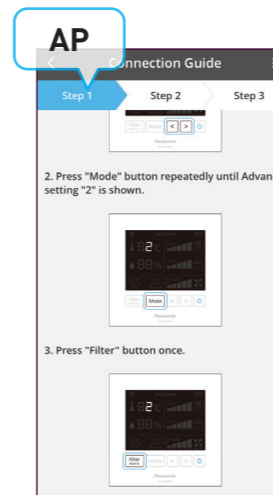
STEP 10

Choose to connect using WPS or AP.
**AP mode can only use with [Android 5.0 & iOS 11.0] and above.



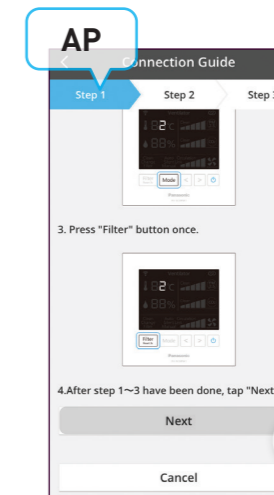
STEP 11

Press and hold "<" and ">" button until "1" is shown on screen.



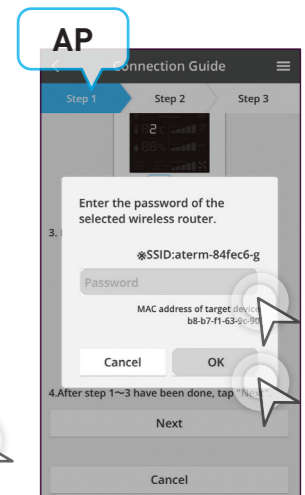
STEP 12

Press "Mode" until "2" is shown.



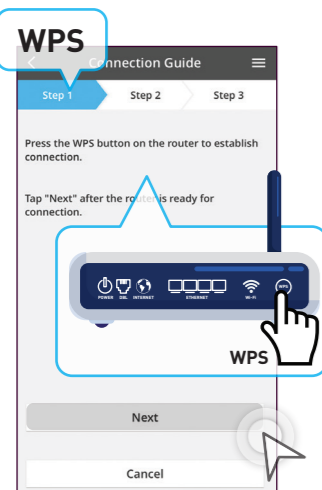
STEP 13

Press "Filter" button once. Then tap "Next".



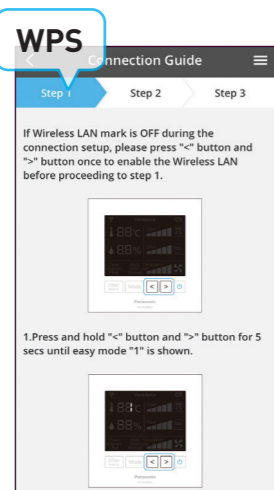
STEP 14

Key in your router password then tap "OK".



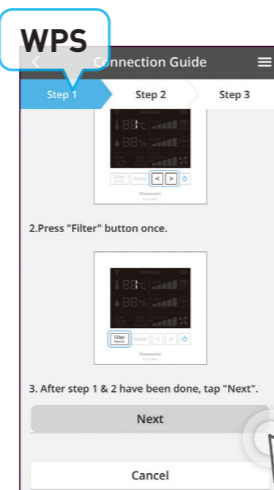
STEP 11

Press the WPS button on router and then tap "Next".



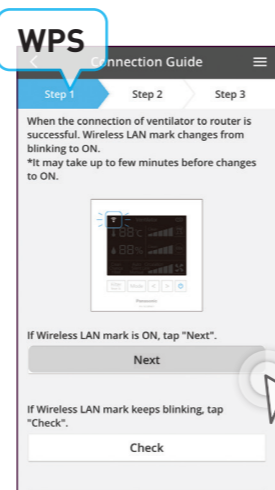
STEP 12

Press and hold "<" and ">" button until "1" is shown on screen.



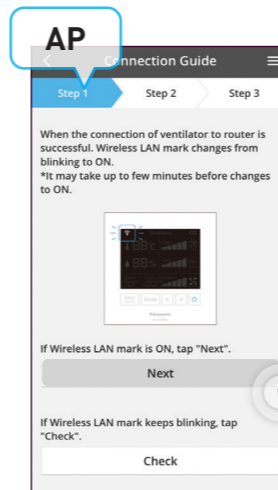
STEP 13

Press "Filter" button once. Then tap "Next".



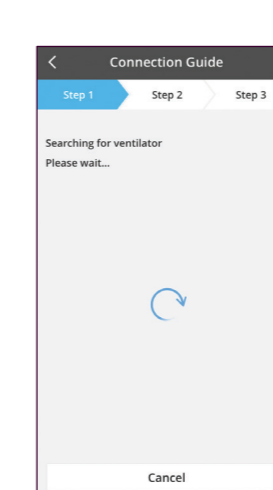
STEP 14

When the Wireless LAN mark changes from blinking to ON, proceed to tap "Next". Go to Step 16.



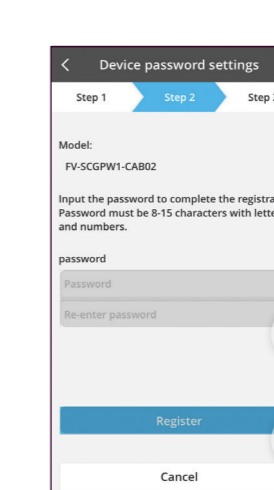
STEP 15

When successfully connected, Wireless LAN mark will change from blinking to ON. Then tap "Next". Go to Step 16.



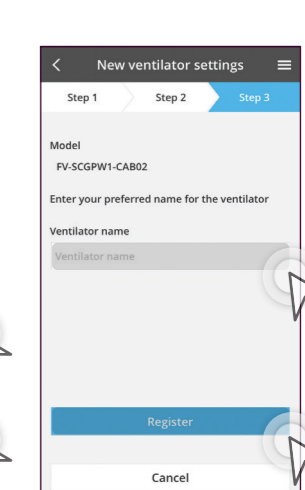
STEP 16

Please wait a while.



STEP 17

Key in Password then tap "Register".



STEP 18

Set ventilator name & tap "Register".