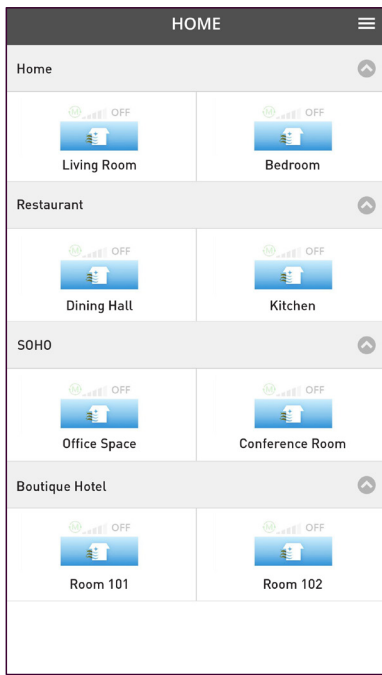


4.3 Manage & Assign Additional Users

Manage & Assign Additional Users.

Assign other users to control selected ventilator units based on locations.



Admin (Father)

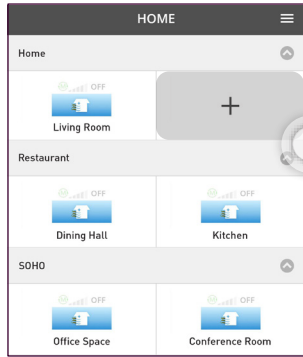
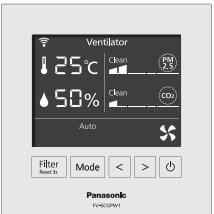
Mother

Person A

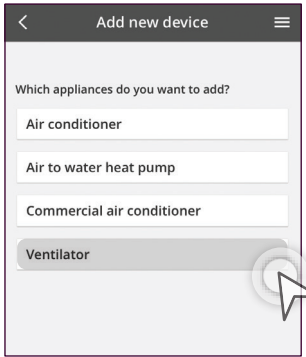
Person B



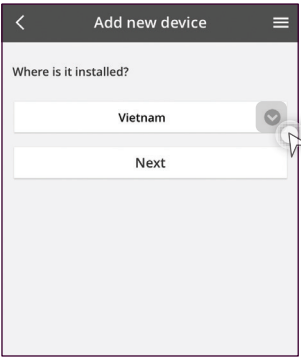
Add Additional Users (Not Operated Before).



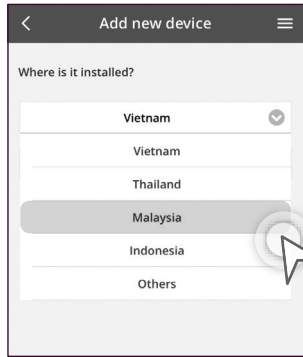
STEP 1
Tap the “+” icon.



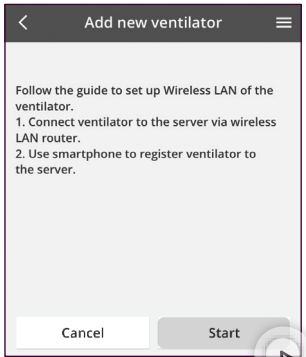
STEP 2
Select “Ventilator”.



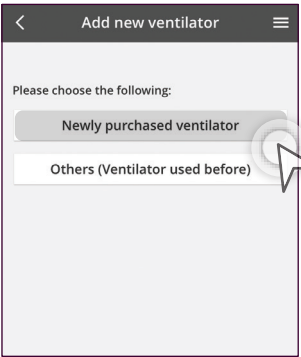
STEP 3
Tap on the “✓” to expand country menu.



STEP 4
Select your country and tap “Next”.



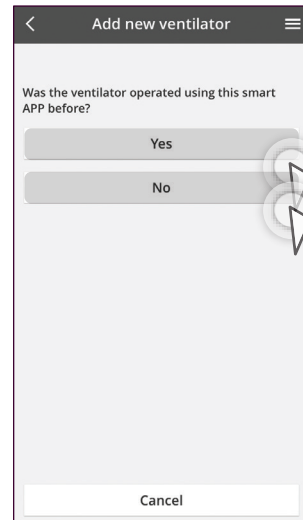
STEP 5
Tap “Start”.



STEP 6
Select “Newly purchased ventilator”.

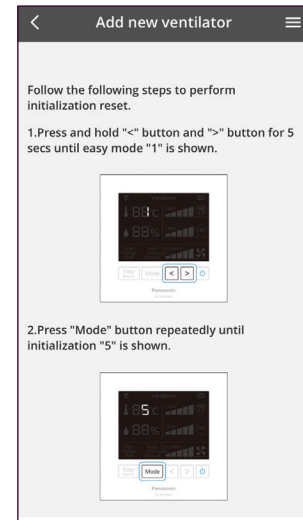
4.3 Manage & Assign Additional Users

Add Additional Users (Not Operated Before) continues...



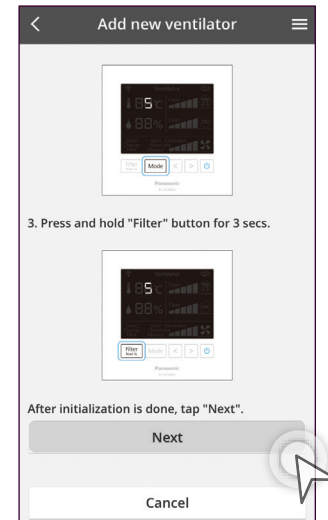
STEP 7

If "Yes" go to Step 10. If "No" proceed to Step 8.



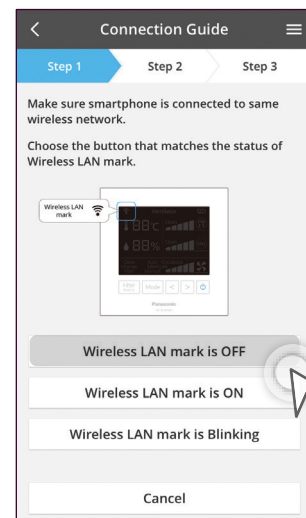
STEP 8

- Press and hold "<" and ">" button until "1" is shown on screen.
- Press "Mode" repeatedly until initialization "5" is shown.



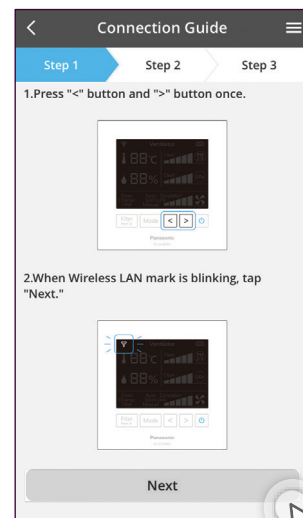
STEP 9

Press and hold "Filter" button for 3 seconds. Once done, tap "Next".



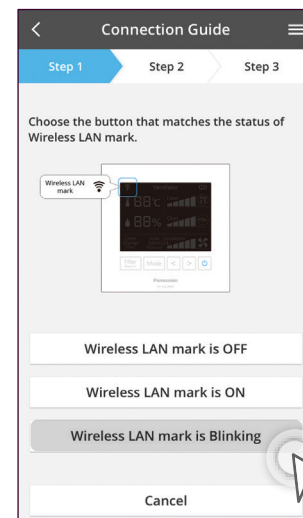
STEP 10

Select "Wireless LAN mark is OFF".



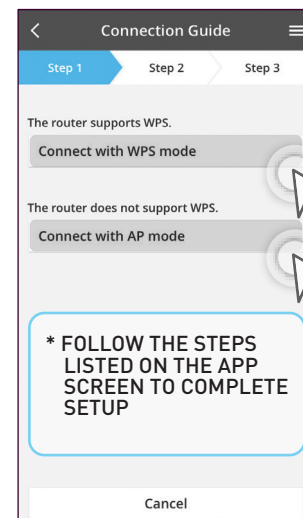
STEP 11

- Press and hold "<" and ">" button once.
- When Wireless LAN mark is blinking, tap "Next".



STEP 12

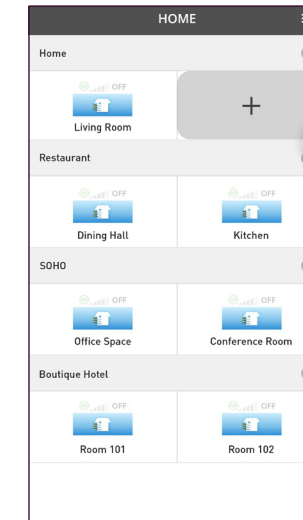
Select "Wireless LAN mark is Blinking".



STEP 13

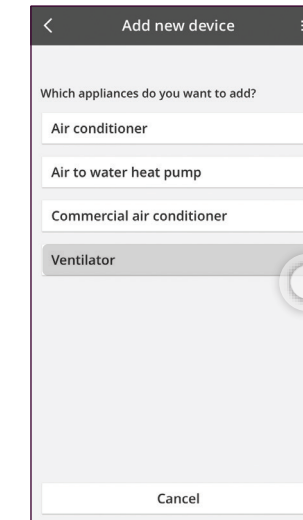
Choose to connect using WPS or AP.
**AP mode can only use with (Android 5.0 & IOS 11.0) and above.

Add Additional Users (Operated Before).



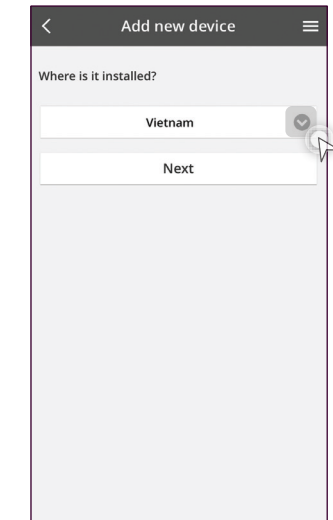
STEP 1

Tap the "+" icon.



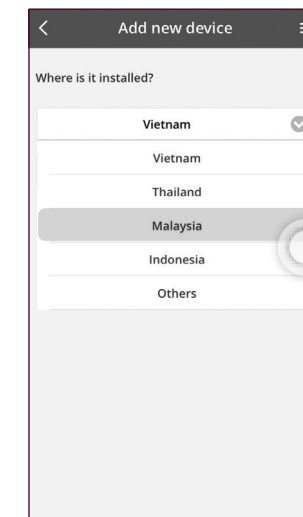
STEP 2

Select "Ventilator".



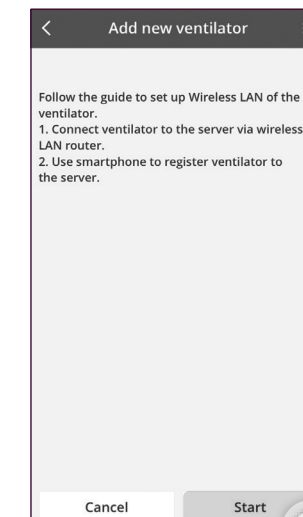
STEP 3

Tap the "v" to expand country menu.



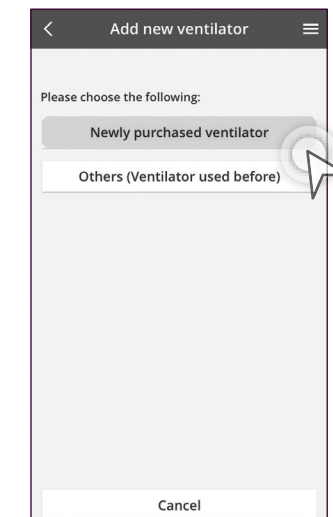
STEP 4

Select your country and tap "Next".



STEP 5

Tap "Start".

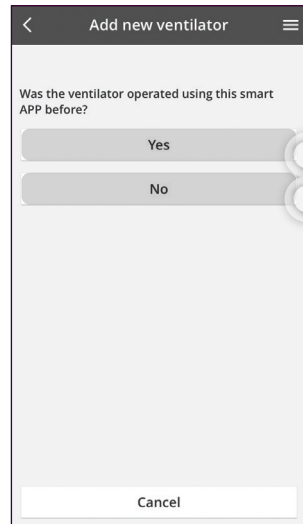


STEP 6

Select "Newly purchased ventilator".

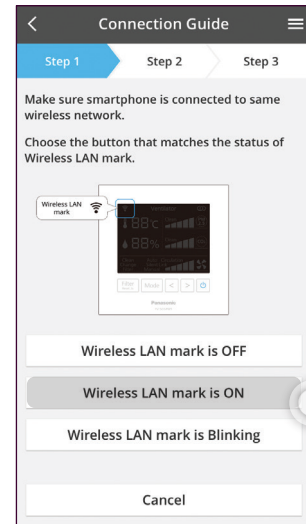
4.3 Manage & Assign Additional Users

Add Additional Users (Operated Before) continues...



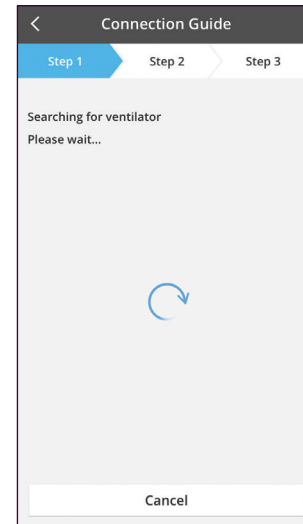
STEP 7

If "Yes" go to Step 9.
If "No" proceed to Step 8.



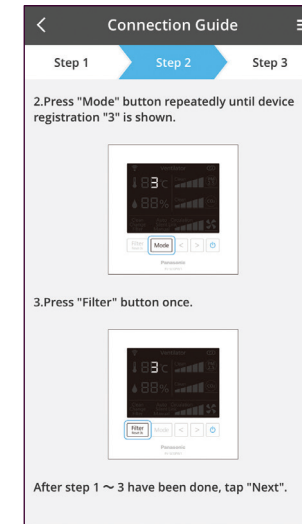
STEP 8

Select "Wireless LAN is ON".



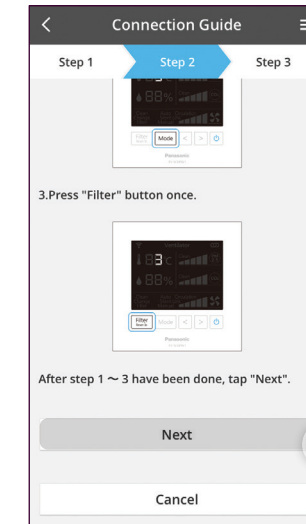
STEP 9

Please wait a while.



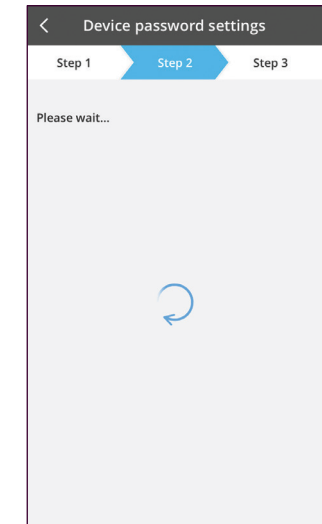
STEP 13

Press "Mode" repeatedly until "5" is shown. Press "Filter" button once.



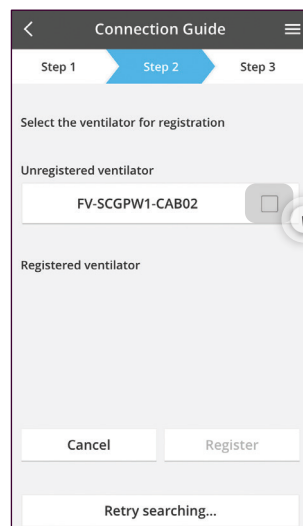
STEP 14

Tap "Next" once, everything is done.



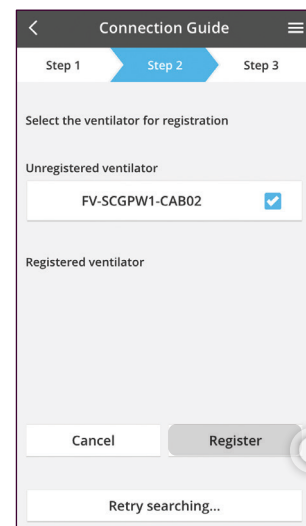
STEP 15

Please wait a while.



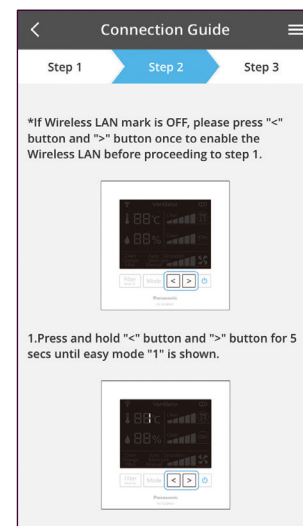
STEP 10

Select your ventilator.



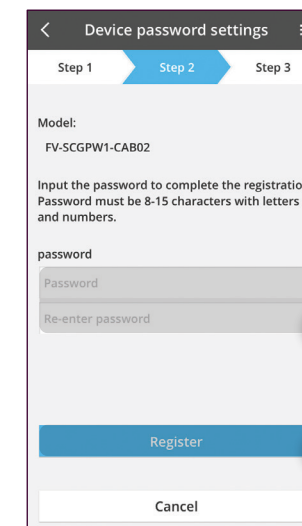
STEP 11

Tap "Register".



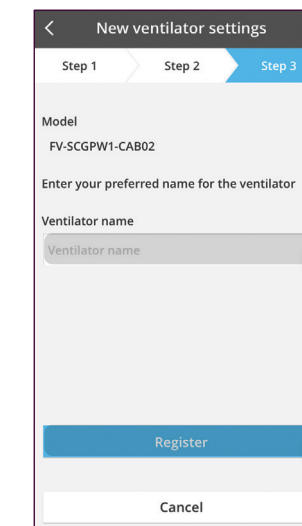
STEP 12

Press and hold "<" and ">" button until "1" is shown on screen.



STEP 16

Key in Password then tap "Register".

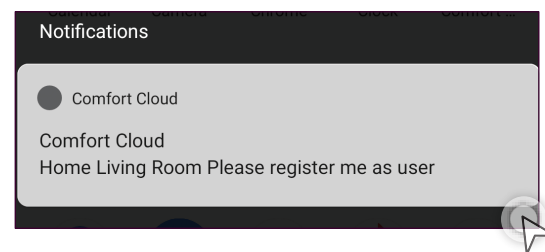


STEP 17

Enter name of ventilator then tap "Register".

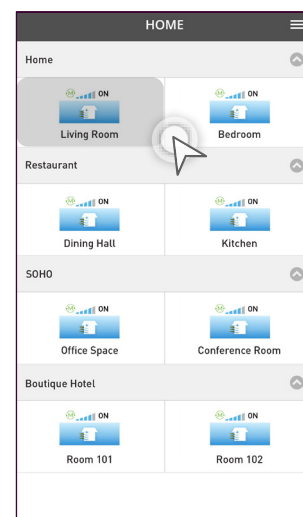
4.3 Manage & Assign Additional Users

Approve Additional Users.



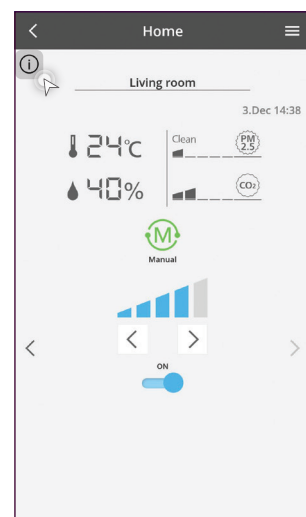
STEP 1

The admin user will receive a notification for additional user registration if the user has allowed Panasonic Comfort Cloud to send notifications.



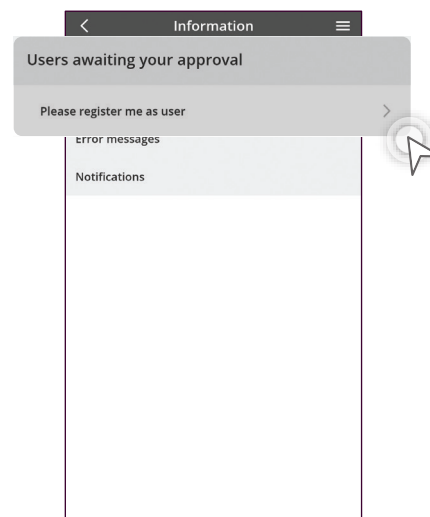
STEP 2

Select the Ventilator.



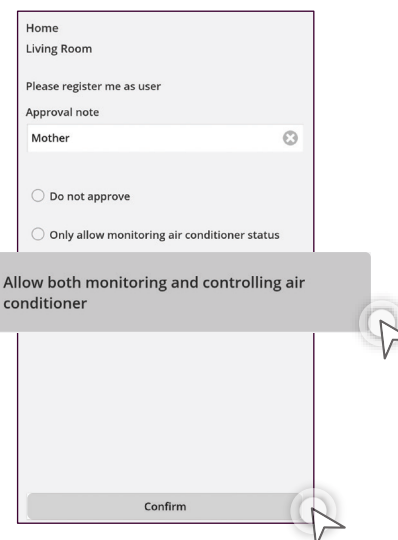
STEP 3

Tap the “i” notification button.



STEP 4

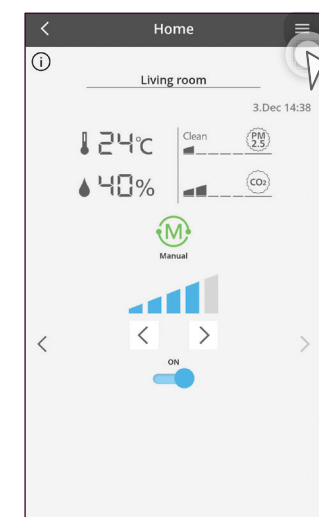
Tap the message.



STEP 5

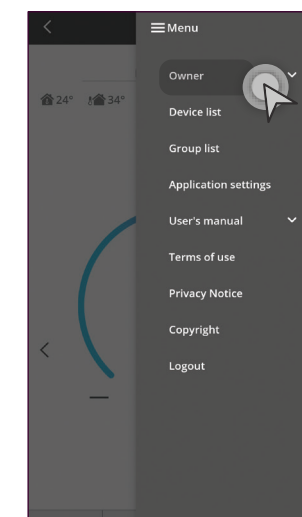
Choose the approval level to share with additional user then tap “Confirm”.

Check User List.



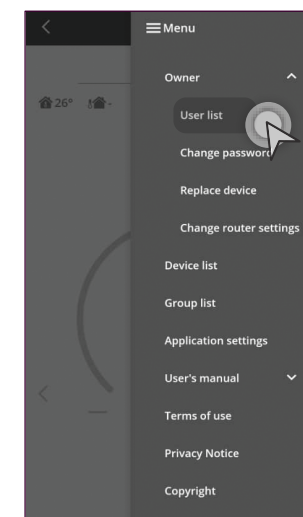
STEP 1

Tap the “≡” on the top right-hand corner of your screen.



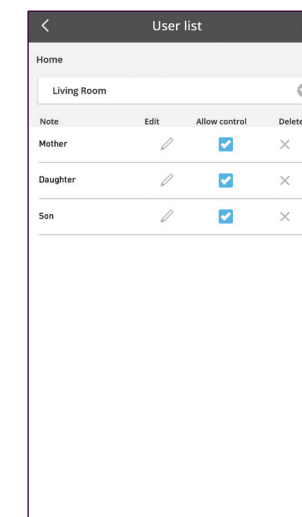
STEP 2

Tap “Owner” to expand the menu.



STEP 3

Select “User list”.



STEP 4

Admin can see which user can control the particular air conditioner.