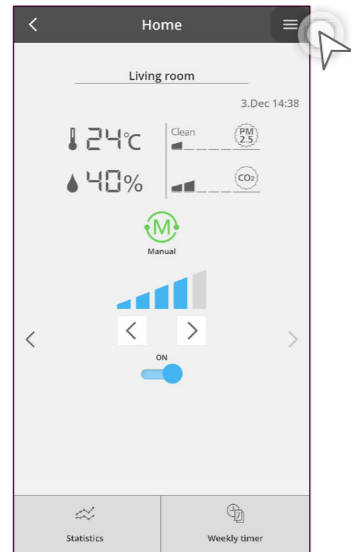


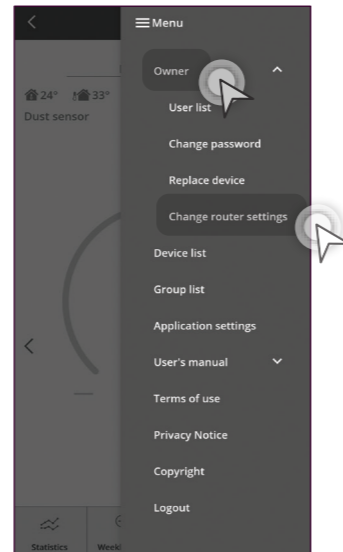
4.4 New Account Registration, Change Router Settings & Device Password

# Change Router Settings.



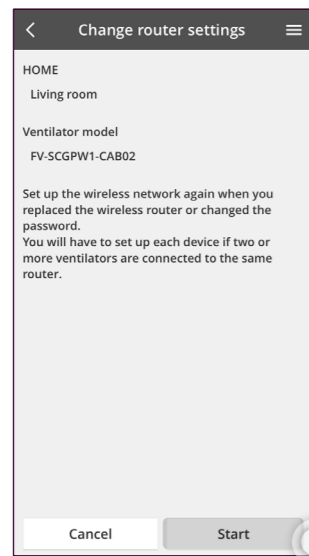
**STEP 1**

Tap the “☰” on the top right-hand corner of your screen.



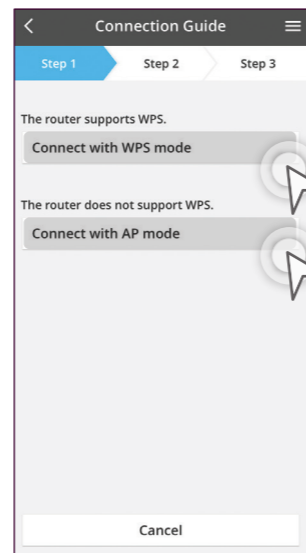
**STEP 2**

Tap “Owner” to see the drop-down options and select “Change Router Settings”.



**STEP 3**

After checking it is the correct model name, then tap “Start”.

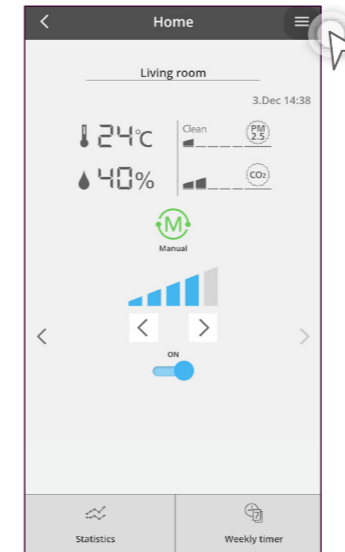


**STEP 4**

Choose to connect using WPS or AP. \*\*AP mode can only use with (Android 5.0 & IOS 11.0) and above.

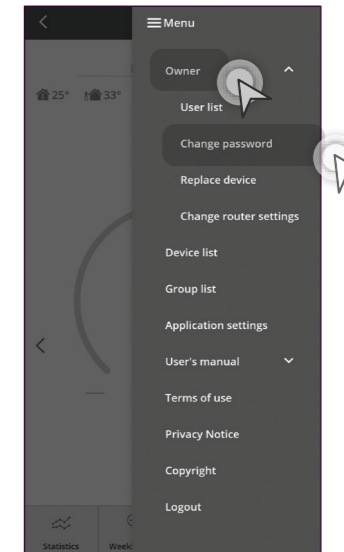
\* FOLLOW THE STEPS LISTED IN THE APP TO CONTINUE.

# Change Device Password.



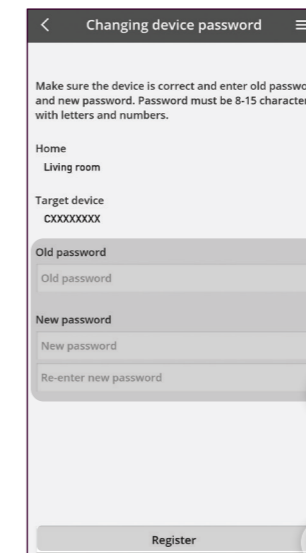
**STEP 1**

Tap the “☰” on the top right-hand corner of your screen.



**STEP 2**

Tap “Owner” to see the drop-down options and select “Change password”.



**STEP 3**

Key in old password then enter New password then tap “Register”.

\* ONCE DEVICE PASSWORD IS CHANGED, ALL USERS BESIDES ADMIN NEED TO RECONNECT.