

# DELUXE / STANDARD ADAPTIVE DUCTED

- Air intake from rear as standard. Industry-leading horizontal and vertical design.
- Powerful 150Pa ESP and space saving 250 mm height, filter included.
- Built-in Drain pump and selectable air inlet position (bottom and rear).



**nanoeX**  
Generator Mark2

Selectable Remote Controller



CZ-RTC5B



CZ-RTC4



CZ-RTC6

CZ-RTC6BL [BLE]  
CZ-RTC6BLW [BLE&WLAN]

## DELUXE

## Specifications of R32 DELUXE Series R32

Capacity [Btu/h(Phase)]	17,100		20,500		24,200		34,100		42,700		42,700(3)		47,800		47,800(3)	
Power Source	V/Phase Hz		230V, 10 Phase - 60Hz		230V, 10 Phase - 60Hz		230V, 10 Phase - 60Hz		230V, 10 Phase - 60Hz		230V, 10 Phase - 60Hz		230V, 10 Phase - 60Hz		230V, 10 Phase - 60Hz	
Indoor Unit	S-1821PF30		S-1821PF30		S-2430PF30		S-3448PF30		S-3448PF30		S-3448PF30		S-3448PF30		S-3448PF30	
Outdoor Unit	U-18PRH106		U-21PRH106		U-24PRH106		U-34PRH106		U-43PRH109		U-43PRH109		U-48PRH106		U-48PRH109	
Cooling Capacity: Rated (Min-Max)	kW		5.00 [1.60-6.00]		6.00 [1.60-6.30]		7.10 [1.80-8.00]		10.00 [3.80-11.20]		12.50 [3.80-14.00]		14.00 [5.30-15.50]		14.00 [5.30-15.50]	
	Btu/h		17,100 [5,460-20,500]		20,500 [5,460-21,500]		24,200 [6,140-27,300]		34,100 [13,000-38,200]		42,700 [13,000-47,800]		47,800 [18,100-52,900]		47,800 [18,100-52,900]	
Current: Rated (Max)	A		5.3 [9.1]		7.1 [11.0]		8.0 [12.0]		11.3 [25.5]		17.0 [26.0]		20.5 [28.0]		6.7 [11.5]	
Power Input: Rated (Min-Max)	kW		1.16 [0.24-1.55]		1.58 [0.24-1.80]		1.80 [0.30-2.35]		2.40 [0.65-3.08]		3.59 [0.65-4.35]		4.34 [0.96-5.15]		4.34 [0.96-5.15]	
CSPF	5.90		5.60		6.10		6.40		5.45		5.55		5.55		5.55	
COP/EER	W/W		4.31		3.80		4.17		3.48		3.48		3.23		3.23	
	Btu/hW		14.74		12.97		13.44		14.21		11.89		11.01		11.01	
<b>Indoor Unit</b>																
Air Volume	m <sup>3</sup> /min		16.0		16.0		21.0		36.0		36.0		36.0		36.0	
	cfm		565		565		740		1,270		1,270		1,270		1,270	
External static pressure	Pa		30 [10-150]		30 [10-150]		30 [10-150]		50 [10-150]		50 [10-150]		50 [10-150]		50 [10-150]	
Sound Pressure Level (Hi/Lo)	dB [A]		35 / 29		35 / 29		35 / 29		40 / 30		40 / 30		40 / 30		40 / 30	
Sound Power Level (Hi/Lo)	dB		58 / 52		58 / 52		58 / 52		63 / 53		63 / 53		63 / 53		63 / 53	
Dimension	Indoor (HxWxD)		mm		250 x 800 x 730		250 x 800 x 730		250 x 1,000 x 730		250 x 1,400 x 730		250 x 1,400 x 730		250 x 1,400 x 730	
Net Weight	Indoor		kg		25		25		30		39		39		39	
<b>Outdoor Unit</b>																
Sound Pressure Level	dB [A]		50		51		53		54		57		58		58	
Sound Power Level	dB		69		70		72		73		76		77		77	
Dimension	Outdoor (HxWxD)		mm		695 x 875 x 320		695 x 875 x 320		695 x 875 x 320		996 x 980 x 370		996 x 980 x 370		996 x 980 x 370	
Net Weight	kg		39		39		48		67		75		75		73	
Piping Connection	Gas Pipe		mm (inch)		12.70 (1/2)		12.70 (1/2)		15.88 (5/8)		15.88 (5/8)		15.88 (5/8)		15.88 (5/8)	
	Liquid Pipe		mm (inch)		6.35 (1/4)		6.35 (1/4)		9.52 (3/8)		9.52 (3/8)		9.52 (3/8)		9.52 (3/8)	
Pipe Length	Min-Max		m		5 - 50		5 - 50		5 - 50		5 - 50		5 - 50		5 - 50	
Elevation Difference	m		30		30		30		30		30		30		30	
Maximum Chargeless Length	Max		m		30		30		30		30		30		30	
Additional Gas	g/m		15		15		25		25		25		25		25	
Operation Range, Outdoor	Min-Max		°C		16-52		16-52		16-52		16-52		16-52		16-52	

\* Specifications are subject to change without notice. Please refer to technical documents for more details. \* The sound pressure level is measured in accordance with JIS C 9612 and JIS B 8616. \* DELUXE series indoor units can only be connected to outdoor units of the same series.



**nanoeX**  
Generator Mark2

## STANDARD

## Specifications of R32 STANDARD Series R32

Capacity [Btu/h(Phase)]	17,100		20,500		24,200		27,600		34,100		42,700		42,700 (3)		47,000		47,000(3)	
Power Source	V/Phase Hz		230V, 10 Phase - 60Hz		230V, 10 Phase - 60Hz		230V, 10 Phase - 60Hz		230V, 10 Phase - 60Hz		230V, 10 Phase - 60Hz		230V, 10 Phase - 60Hz		230V, 10 Phase - 60Hz		230V, 10 Phase - 60Hz	
Indoor Unit	S-1821PF30		S-1821PF30		S-2430PF30		S-2430PF30		S-3448PF30		S-3448PF30		S-3448PF30		S-3448PF30		S-3448PF30	
Outdoor Unit	U-18PR106		U-21PR106		U-24PR106		U-30PR106		U-34PR106		U-43PR106		U-43PR109		U-48PR106		U-48PR109	
Cooling Capacity: Rated (Max)	kW		5.00 [2.00-5.60]		6.00 [2.00-6.30]		7.10 [2.00-7.60]		8.10 [2.00-8.90]		10.00 [3.20-11.20]		12.50 [3.80-13.50]		12.50 [3.80-13.50]		13.77 [3.80-14.20]	
	Btu/h		17,100 [6,820-19,100]		20,500 [6,820-21,500]		24,200 [6,820-25,900]		27,600 [6,820-30,400]		34,100 [10,900-38,200]		42,700 [13,000-46,100]		42,700 [13,000-46,100]		47,000 [13,000-48,500]	
Current: Rated (Min-Max)	A		6.9 [9.1]		8.7 [11.0]		10.1 [12.0]		11.5 [15.5]		13.8 [16.5]		18.7 [26.0]		6.1 [10.5]		22.5 [28.0]	
Power Input: Rated (Min-Max)	kW		1.54 [0.41-1.75]		1.95 [0.41-2.30]		2.27 [0.34-2.48]		2.60 [0.33-2.90]		3.12 [0.59-3.65]		3.96 [0.65-4.35]		3.96 [0.65-4.35]		4.77 [0.65-4.95]	
CSPF	5.02		4.65		5.21		5.21		4.74		5.02		5.02		4.74		4.77	
COP/EER	W/W		3.25		3.08		3.13		3.12		3.21		3.16		3.16		2.89	
	Btu/hW		11.10		10.51		10.66		10.62		10.93		10.78		10.78		9.85	
<b>Indoor Unit</b>																		
Air Volume	m <sup>3</sup> /min		16.0		16.0		21.0		21.0		36.0		36.0		36.0		36.0	
	cfm		565		565		740		740		1,270		1,270		1,270		1,270	
External static pressure	Pa		30 [10-150]		30 [10-150]		30 [10-150]		30 [10-150]		50 [10-150]		50 [10-150]		50 [10-150]		50 [10-150]	
Sound Pressure Level (Hi/Lo)	dB [A]		35 / 29		35 / 29		35 / 29		35 / 29		40 / 30		40 / 30		40 / 30		40 / 30	
Sound Power Level (Hi/Lo)	dB		58 / 52		58 / 52		58 / 52		58 / 52		63 / 53		63 / 53		63 / 53		63 / 53	
Dimension	Indoor (HxWxD)		mm		250 x 800 x 730		250 x 800 x 730		250 x 1,000 x 730		250 x 1,400 x 730		250 x 1,400 x 730		250 x 1,400 x 730		250 x 1,400 x 730	
Net Weight	Indoor		kg		25		25		30		39		39		39		39	
<b>Outdoor Unit</b>																		
Sound Pressure Level	dB [A]		50		51		51		53		55		57		57		58	
Sound Power Level	dB		69		70		70		72		74		76		76		77	
Dimension	Outdoor (HxWxD)		mm		619 x 824 x 299		619 x 824 x 299		619 x 824 x 299		695 x 875 x 320		695 x 875 x 320		996 x 980 x 370		996 x 980 x 370	
Net Weight	kg		29		29		33		39		48		68		67		67	
Piping Connection	Gas Pipe		mm (inch)		12.70 (1/2)		12.70 (1/2)		15.88 (5/8)		15.88 (5/8)		15.88 (5/8)		15.88 (5/8)		15.88 (5/8)	
	Liquid Pipe		mm (inch)		6.35 (1/4)		6.35 (1/4)		9.52 (3/8)		9.52 (3/8)		9.52 (3/8)		9.52 (3/8)		9.52 (3/8)	
Pipe Length	Min-Max		m		5 - 30		5 - 30		5 - 30		5 - 50		5 - 50		5 - 50		5 - 50	
Elevation Difference	m		20		20		20		30		30		30		30		30	
Maximum Chargeless Length	Max		m		10		10		30		30		30		30		30	
Additional Gas	g/m		15		15		15		25		25		25		25		25	
Operation Range, Outdoor	Min-Max		°C		16-46		16-46		16-46		16-46		16-46		16-46		16-46	

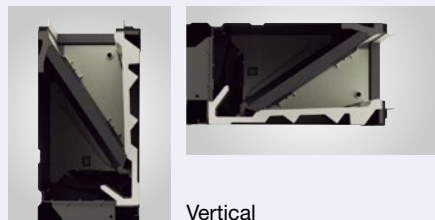
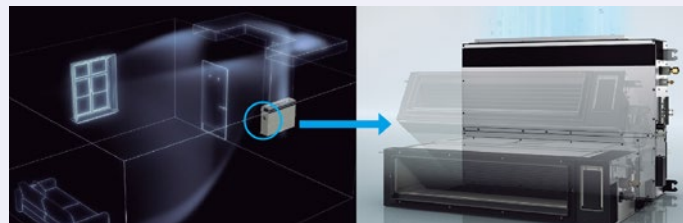
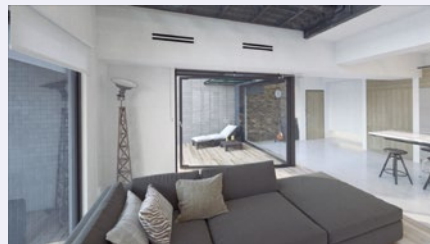
\* Specifications are subject to change without notice. Please refer to technical documents for more details. \* The sound pressure level is measured in accordance with JIS C 9612 and JIS B 8616. \* STANDARD series indoor units can only be connected to outdoor units of the same series.

## Flexible Installation Adaptive Ducted

New NX Series Adaptive Ducted units can be mounted not only horizontally but also vertically without the need for alterations. Our groundbreaking drain pan design delivers a new level of flexibility in an industry-leading vertical installation.



Product information



Horizontal

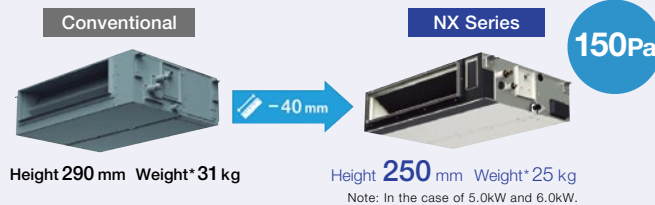
Vertical

## Compact Body with Powerful 150 Pa ESP

The indoor units have also been completely renewed, offering a 40 mm height reduction to only 250 mm\* and a weight reduction of up to 10%, all while maintaining the same powerful 150 Pa.

\* Compared to conventional model.

## Space saving 250 mm height



Height 290 mm Weight\* 31 kg

Height 250 mm Weight\* 25 kg

Note: In the case of 5.0kW and 6.0kW.

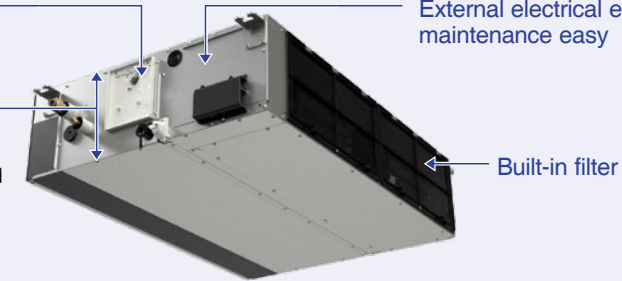
## Technical Focus

Built-in Drain pump (DC motor pump)

External electrical equipment box makes maintenance easy

Space saving height of 250mm for all models

250mm standardised height provides easy and uniform installation for models with different capacities, especially when ceiling heights are restricted.



## Superior air quality **nanoeX**

The new ducted models are equipped with nanoe™ X as standard, a unique air quality improvement technology producing twice the amount of hydroxyl radicals compared to previous generations. Combined with the strong static pressure this ensures pristine nanoe™ X air travels unaffected even through multiple duct shapes at lengths of 10m, as well as making them ideal for use in larger spaces.

Note: PF3 and PE3 (16.0kW and below) ranges only.



Bend once Bend twice Bend three times  
Based on in-house test result, even with a total ductwork length up to 10m, effectiveness of nanoe™ X is maintained.

## Selectable air inlet position

A removable panel allows air inlet position to be adjusted to enable rear or bottom entry, depending on ductwork installation.

