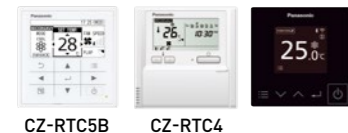


DELUXE / STANDARD ADAPTIVE DUCTED

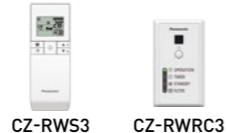
- Air intake from rear as standard. Industry-leading horizontal and vertical design.
- Powerful 150Pa ESP and space saving 250 mm height, filter included.
- Built-in Drain pump and selectable air inlet position (bottom and rear).

[Selectable Remote Controller]



CZ-RTC6
CZ-RTC6BL [BLE]
CZ-RTC6BLW [BLE&WLAN]

[Optional Wireless Remote Controller]



[Optional Adaptor]



If not use CZ-RTC6BLW, the adaptor also can be used.



DELUXE

Specifications of R32 DELUXE Series ^{R32}

Capacity [Btu/h]		17,100	20,500	24,200	34,100	42,700	42,700(3)	47,800	47,800(3)
Power Source	V/Phase Hz	220-240V, 10 Phase - 50Hz							
Indoor Unit		S-1821PF3H	S-1821PF3H	S-2430PF3H	S-3448PF3H	S-3448PF3H	S-3448PF3H	S-3448PF3H	S-3448PF3H
Outdoor Unit		U-18PRH1H5	U-21PRH1H5	U-24PRH1H5	U-34PRH1H5	U-43PRH1H5	U-43PRH1H5	U-48PRH1H5	U-48PRH1H5
Cooling Capacity : Rated (Min-Max)	kW	5.00 [1.60-6.00]	6.00 [1.60-6.30]	7.10 [1.80-8.00]	10.00 [3.80-11.20]	12.50 [3.80-14.00]	12.50 [3.80-14.00]	14.00 [5.30-15.50]	14.00 [5.30-15.50]
	Btu/h	17,100 [5,460-20,500]	20,500 [5,460-21,500]	24,200 [6,140-27,300]	34,100 [13,000-38,200]	42,700 [13,000-47,800]	42,700 [13,000-47,800]	47,800 [18,100-52,900]	47,800 [18,100-52,900]
Current: Rated (Max)	A	5.6-5.3 [9.1]	7.4-6.9 [11.0]	8.3-7.7 [12.0]	11.9-10.9 [25.5]	17.7-16.3 [26.0]	17.7-16.3 [26.0]	21.4-19.7 [28.0]	7.1-6.5 [11.5]
Power Input: Rated (Min-Max)	kW	1.16 [0.24-1.55]	1.58 [0.24-1.80]	1.80 [0.30-2.35]	2.40 [0.65-3.08]	3.59 [0.65-4.35]	3.59 [0.65-4.35]	4.34 [0.96-5.15]	4.34 [0.96-5.15]
CSPF		5.90	5.60	6.10	6.40	5.45	5.45	5.55	5.55
COP/EER	W/W	4.31	3.8	4.17	3.48	3.48	3.48	3.23	3.23
	Btu/hW	14.74	12.97	13.44	14.51	11.89	11.89	11.01	11.01
Indoor Unit									
Air Volume	m ³ /min	16.0	16.0	21.0	36.0	36.0	36.0	36.0	36.0
	cfm	565	565	740	1,270	1,270	1,270	1,270	1,270
External static pressure	Pa	30 [10-150]	30 [10-150]	30 [10-150]	50 [10-150]	50 [10-150]	50 [10-150]	50 [10-150]	50 [10-150]
Sound Pressure Level (Hi/Lo)	dB [A]	35 / 29	35 / 29	35 / 29	40 / 30	40 / 30	40 / 30	40 / 30	40 / 30
Sound Power Level (Hi/Lo)	dB	58 / 52	58 / 52	58 / 52	63 / 53	63 / 53	63 / 53	63 / 53	63 / 53
Dimension	Indoor (HxWxD)	mm	250 x 800 x 730	250 x 800 x 730	250 x 1,000 x 730	250 x 1,400 x 730	250 x 1,400 x 730	250 x 1,400 x 730	250 x 1,400 x 730
Net Weight	Indoor	kg	25	25	30	39	39	39	39
Outdoor Unit									
Sound Pressure Level	dB [A]	50	51	53	54	57	57	58	58
Sound Power Level	dB	69	70	72	73	76	76	77	77
Dimension	Outdoor (HxWxD)	mm	695 x 875 x 320	695 x 875 x 320	695 x 875 x 320	996 x 980 x 370	996 x 980 x 370	996 x 980 x 370	996 x 980 x 370
Net Weight		kg	39	39	67	67	67	75	73
Piping Connection	Gas Pipe	mm (inch)	12.70 (1/2)	12.70 (1/2)	15.88 (5/8)	15.88 (5/8)	15.88 (5/8)	15.88 (5/8)	15.88 (5/8)
	Liquid Pipe	mm (inch)	6.35 (1/4)	6.35 (1/4)	9.52 (3/8)	9.52 (3/8)	9.52 (3/8)	9.52 (3/8)	9.52 (3/8)
Pipe Length	Min-Max	m	5 - 50	5 - 50	5 - 50	5 - 50	5 - 50	5 - 50	5 - 50
Elevation Difference	m	30	30	30	30	30	30	30	30
Maximum Chargeless Length	Max	m	30	30	30	30	30	30	30
Additional Gas	g/m	15	15	25	25	25	25	25	25
Operation Range, Outdoor	Min-Max	°C	16-52	16-52	16-52	16-52	16-52	16-52	16-52

* Specifications are subject to change without notice. Please refer to technical documents for more details. * The sound pressure level is measured in accordance with JIS C 9612 and JIS B 8616. * DELUXE series indoor units can only be connected to outdoor units of the same series. * CZ-CAPWFC1 is a WLAN smart adaptor for connecting to the Comfort Cloud app.

STANDARD

Specifications of R32 STANDARD Series ^{R32}

Capacity [Btu/h]		17,100	20,500	24,200	27,600	34,100	42,700	42,700 (3)	47,000	47,000 (3)	47,000	47,000 (3)	47,000 (3)
Power Source	V/Phase Hz	220-240V, 10 Phase - 50Hz											
Indoor Unit		S-1821PF3H	S-1821PF3H	S-2430PF3H	S-2430PF3H	S-3448PF3H	S-3448PF3H	S-3448PF3H	S-3448PF3H	S-3448PF3H	S-3448PF3H	S-3448PF3H	S-3448PF3H
Outdoor Unit		U-18PR1H5	U-21PR1H5	U-24PR1H5	U-30PR1H5	U-34PR1H5	U-43PR1H5	U-43PR1H5	U-48PR1H5	U-48PR1H5	U-48PR1H5	U-48PR1H5	U-48PR1H5
Cooling Capacity : Rated (Min-Max)	kW	5.00 [2.00-5.60]	6.00 [2.00-6.30]	7.10 [2.00-7.60]	8.10 [2.00-8.90]	10.00 [3.20-11.20]	12.50 [3.80-13.50]	12.50 [3.80-13.50]	13.77 [3.80-14.20]	13.77 [3.80-14.20]	13.77 [3.80-14.20]	13.77 [3.80-14.20]	13.77 [3.80-14.20]
	Btu/h	17,100 [6,820-19,100]	20,500 [6,820-21,500]	24,200 [6,820-25,900]	27,600 [6,820-30,400]	34,100 [10,900-38,200]	42,700 [13,000-46,100]	42,700 [13,000-46,100]	47,000 [13,000-48,500]	47,000 [13,000-48,500]	47,000 [13,000-48,500]	47,000 [13,000-48,500]	47,000 [13,000-48,500]
Current: Rated (Max)	A	7.2-6.8 [9.1]	9.1-8.6 [11.0]	10.5-9.7 [12.0]	12.1-11.1 [15.5]	14.5-13.3 [16.5]	19.6-17.9 [26.0]	19.6-17.9 [26.0]	23.6-21.6 [28.0]	23.6-21.6 [28.0]	23.6-21.6 [28.0]	23.6-21.6 [28.0]	23.6-21.6 [28.0]
Power Input: Rated (Min-Max)	kW	1.54 [0.41-1.75]	1.95 [0.41-2.30]	2.27 [0.34-2.48]	2.60 [0.33-2.90]	3.12 [0.59-3.65]	3.96 [0.65-4.35]	3.96 [0.65-4.35]	4.77 [0.65-4.95]	4.77 [0.65-4.95]	4.77 [0.65-4.95]	4.77 [0.65-4.95]	4.77 [0.65-4.95]
CSPF		5.02	4.65	5.21	5.21	4.74	5.02	5.02	4.74	4.74	4.74	4.74	4.74
COP/EER	W/W	3.25	3.08	3.13	3.12	3.21	3.16	3.16	2.89	2.89	2.89	2.89	2.89
	Btu/hW	11.10	10.51	10.66	10.62	10.93	10.78	10.78	9.85	9.85	9.85	9.85	9.85
Indoor Unit													
Air Volume	m ³ /min	16.0	16.0	21.0	21.0	36.0	36.0	36.0	36.0	36.0	36.0	36.0	36.0
	cfm	565	565	740	740	1,270	1,270	1,270	1,270	1,270	1,270	1,270	1,270
External static pressure	Pa	30 [10-150]	30 [10-150]	30 [10-150]	30 [10-150]	50 [10-150]	50 [10-150]	50 [10-150]	50 [10-150]	50 [10-150]	50 [10-150]	50 [10-150]	50 [10-150]
Sound Pressure Level (Hi/Lo)	dB [A]	35 / 29	35 / 29	35 / 29	35 / 29	40 / 30	40 / 30	40 / 30	40 / 30	40 / 30	40 / 30	40 / 30	40 / 30
Sound Power Level (Hi/Lo)	dB	58 / 52	58 / 52	58 / 52	58 / 52	63 / 53	63 / 53	63 / 53	63 / 53	63 / 53	63 / 53	63 / 53	63 / 53
Dimension	Indoor (HxWxD)	mm	250 x 800 x 730	250 x 800 x 730	250 x 1,000 x 730	250 x 1,400 x 730	250 x 1,400 x 730	250 x 1,400 x 730	250 x 1,400 x 730	250 x 1,400 x 730	250 x 1,400 x 730	250 x 1,400 x 730	250 x 1,400 x 730
Net Weight	Indoor	kg	25	25	30	30	39	39	39	39	39	39	39
Outdoor Unit													
Sound Pressure Level	dB [A]	50	51	51	53	55	57	57	58	58	58	58	58
Sound Power Level	dB	69	70	70	72	74	76	76	77	77	77	77	77
Dimension	Outdoor (HxWxD)	mm	619 x 824 x 299	619 x 824 x 299	619 x 824 x 299	695 x 875 x 320	695 x 875 x 320	996 x 980 x 370	996 x 980 x 370	996 x 980 x 370	996 x 980 x 370	996 x 980 x 370	996 x 980 x 370
Net Weight		kg	29	29	33	39	48	67	68	67	67	67	67
Piping Connection	Gas Pipe	mm (inch)	12.70 (1/2)	12.70 (1/2)	15.88 (5/8)	15.88 (5/8)	15.88 (5/8)	15.88 (5/8)	15.88 (5/8)	15.88 (5/8)	15.88 (5/8)	15.88 (5/8)	15.88 (5/8)
	Liquid Pipe	mm (inch)	6.35 (1/4)	6.35 (1/4)	9.52 (3/8)	9.52 (3/8)	9.52 (3/8)	9.52 (3/8)	9.52 (3/8)	9.52 (3/8)	9.52 (3/8)	9.52 (3/8)	9.52 (3/8)
Pipe Length	Min-Max	m	5 - 30	5 - 30	5 - 30	5 - 50	5 - 50	5 - 50	5 - 50	5 - 50	5 - 50	5 - 50	5 - 50
Elevation Difference	m	20	20	20	30	30	30	30	30	30	30	30	30
Maximum Chargeless Length	Max	m	10	10	10	30	30	30	30	30	30	30	30
Additional Gas	g/m	15	15	15	25	25	25	25	25	25	25	25	25
Operation Range, Outdoor	Min-Max	°C	16-46	16-46	16-46	16-46	16-46	16-46	16-46	16-46	16-46	16-46	16-46

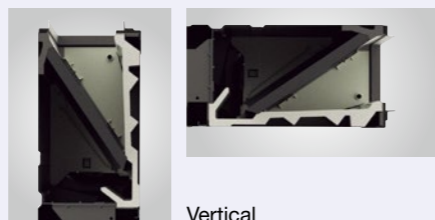
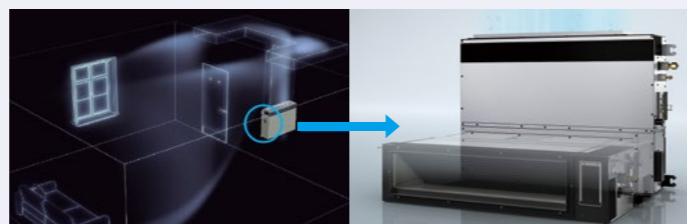
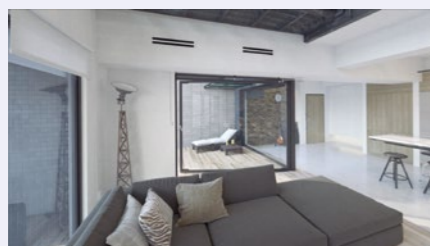
* Specifications are subject to change without notice. Please refer to technical documents for more details. * The sound pressure level is measured in accordance with JIS C 9612 and JIS B 8616. * STANDARD series indoor units can only be connected to outdoor units of the same series. * CZ-CAPWFC1 is a WLAN smart adaptor for connecting to the Comfort Cloud app.

Flexible Installation Adaptive Ducted

New NX Series Adaptive Ducted units can be mounted not only horizontally but also vertically without the need for alterations. Our groundbreaking drain pan design delivers a new level of flexibility in an industry-leading vertical installation.



Product information



Horizontal

Vertical

Compact Body with Powerful 150 Pa ESP

The indoor units have also been completely renewed, offering a 40 mm height reduction to only 250 mm* and a weight reduction of up to 10%, all while maintaining the same powerful 150 Pa.

* Compared to conventional model.

Space saving 250 mm height



Height 290 mm Weight* 31 kg

Height 250 mm Weight* 25 kg

Note: In the case of 5.0kW and 6.0kW.

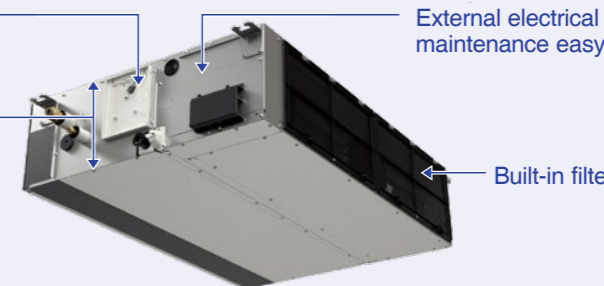
Technical Focus

Built-in Drain pump (DC motor pump)

External electrical equipment box makes maintenance easy

Space saving height of 250mm for all models

250mm standardised height provides easy and uniform installation for models with different capacities, especially when ceiling heights are restricted.



Superior air quality ^{nanoeX}

The new ducted models are equipped with nanoe™ X as standard, a unique air quality improvement technology producing twice the amount of hydroxyl radicals compared to previous generations. Combined with the strong static pressure this ensures pristine nanoe™ X air travels unaffected even through multiple duct shapes at lengths of 10m, as well as making them ideal for use in larger spaces.

Note: PF3 and PE3 (16.0kW and below) ranges only.



Bend once Bend twice Bend three times
Based on in-house test result, even with a total ductwork length up to 10m, effectiveness of nanoe™ X is maintained.

Selectable air inlet position

A removable panel allows air inlet position to be adjusted to enable rear or bottom entry, depending on ductwork installation.

