



Building Passion, Building Solutions.

Panasonic Air Conditioning Systems

We face a time in which "quality air" differentiates business. It's a time for Panasonic to fully display its strengths. Our ability to assemble and build superior systems isn't just due to the rich resources we have as a comprehensive electronics manufacturer, but also to Panasonic's 100 years of tradition, where each person thinks and acts on their own initiative while working in a team to reach further heights. We do not compromise. Each of our independent selves is a one stop solution. We face our customers' challenges together with our customers and do all that we can to build effective systems. As a true partner for our customers, we strive to always be at the forefront of business.

- Please read the Installation Instructions carefully before installing the unit, and the Operating Instructions before using it.
- Specifications are subject to change without prior notice.
- The contents of this catalogue are accurate as of November 2021.
- Due to printing considerations, the actual colours may vary slightly from those shown.
- All graphics are provided merely for the purpose of illustrating a point.



Do not add or replace refrigerant other than the specified type. Manufacturer is not responsible for the damage and deterioration in safety due to usage of other refrigerant.

Authorised Dealer

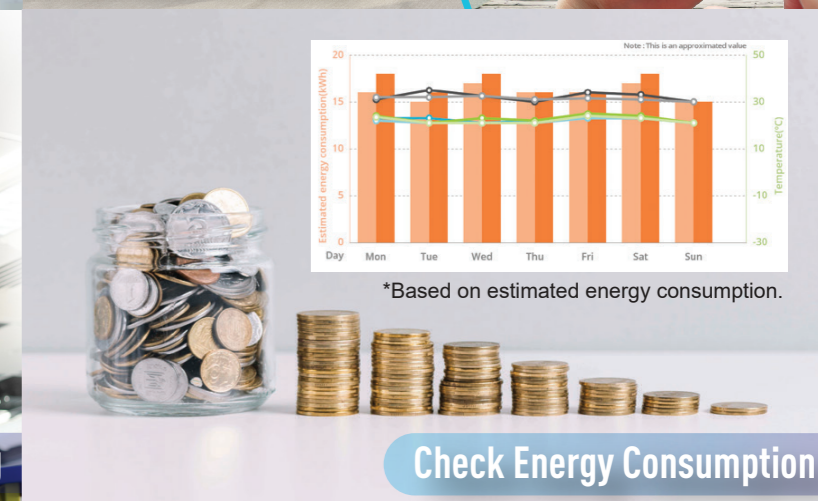
PAC INVERTER ASIA November 2021

Panasonic



CAMBODIA PACKAGED AIR CONDITIONER (NX Series) 2022/2023

INVERTER • **nanoeX™**



R32
REFRIGERANT

A Better Life, A Better World

QUALITY AIR FOR LIFE

Service Center Address:
#327-329, St 274, Sangkat Vealvong,
Khan 7 Makara, Phnom Penh

Service Center Contact:
(Toll Free Number) 1800-21-5503
(+855) 23 215 503

NX Series Product Line Up

nanoeX Technology

NX Series Products Line Up

4-WAY CASSETTES



The 4-way direction airflow released through four vanes provides wide and even cooling.

CEILING MOUNTED



Providing outstanding energy-saving performance, comfort and long-distance air flow distribution, these units are perfect for retail stores and schools.

ADAPTIVE DUCTED



Offering remarkable overall cooling coverage of the entire building, Ceiling Ducted types are suitable for premises with concealed or false ceilings such as business centres.

Type \ Btu	17,100		20,500	24,200	29,000	34,100	42,700		47,800/45,500/47,000	
Cassette          <small>Wired Remote Controller</small>	S-1821PU3H			S-2430PU3H			S-3448PU3H			
Ceiling          <small>Wired Remote Controller</small>	S-1821PT3H			S-2430PT3H			S-3448PT3H			
Ducted          <small>Wired Remote Controller</small>	S-1821PF3H			S-2430PF3H			S-3448PF3H			
Outdoor     	U-18PR1H5	U-21PR1H5	U-24PR1H5	U-30PR1H5	U-34PR1H5	U-43PR1H5	U-43PR1H8	U-48PR1H5	U-48PR1H8	

* One indoor unit can be connected to a different capacity outdoor unit

Development of nanoeX Technology


Texcell

CERTIFICATE OF INVESTIGATION STUDY
STUDY OF VALIDATION OF THE EFFICIENCY OF nanoeX-Air conditioner ON SARS-CoV-2 BY NO GLP VIRAL CLEARANCE STUDY (F10)

Study number: 100461 A2
Study report date: 10/09/2021

Sponsor: PANASONIC CORPORATION APPLIANCE COMPANY
2-1-1 Higashi-Shinjuku, Nishi-Shinjuku, Tokyo 163-8601, Japan

Submitted by: Test Facility: TEXCELL
Test facility management: Business Room

Signature: 
Company: T
Test Facility Location: 10000 Ery Road, Fuzhou

An inactivation and reduction rate of 4.37 (99.99%) Log of SARS-CoV-2 in 2 hours was demonstrated in a 45 L Box.


Texcell

CERTIFICATE OF INVESTIGATION STUDY
STUDY OF VALIDATION OF THE EFFICIENCY OF nanoeX-Air conditioner ON SARS-CoV-2 BY NO GLP VIRAL CLEARANCE STUDY (F10)

Study number: 100461 C3
Study report date: 10/09/2021

Sponsor: PANASONIC CORPORATION APPLIANCE COMPANY
2-1-1 Higashi-Shinjuku, Nishi-Shinjuku, Tokyo 163-8601, Japan

Submitted by: Test Facility: TEXCELL
Test facility management: Business Room

Signature: 
Company: T
Test Facility Location: 10000 Ery Road, Fuzhou

An inactivation and reduction rate of 4.37 (99.99%) Log of SARS-CoV-2 after 8 hours, 2.63 Log (99.76%) of SARS-CoV-2 after 24 hours was demonstrated in a 6.7m³ area - Generac at a distance of 0.7m from the air conditioner and at a height of 1.5m.

Doubled OH radicals

nanoe™	nanoe™ X
Generator: Mark1	Generator: Mark2
480 Billion OH radicals/sec	4,800 Billion OH radicals/sec
10x times	2x times
Corona discharge	Multi-leader discharge
	Multi-leader discharge [Optimized discharge control]

Deodorise and inhibit pollutant by half time

Pollen inhibition test
(Required time to inhibit 99% of pollen / Approx. 23m³ with RAC)

nanoe™ X: 24 hours
New nanoe™ X: 12 hours (1/2 shorter)

Deodorisation test
(Required time to reduce aged-related body odour intensity by 1.8 levels / Approx. 23m³ with RAC)

nanoe™ X: 120 minutes
New nanoe™ X: 60 minutes (1/2 shorter)

WiFi Operation

Advantage of Panasonic IoT integration

Connect new wired remote controller, end-user can utilize wifi function with switch aircon setting, check electricity and monitor up to 200 units from one smartphone.



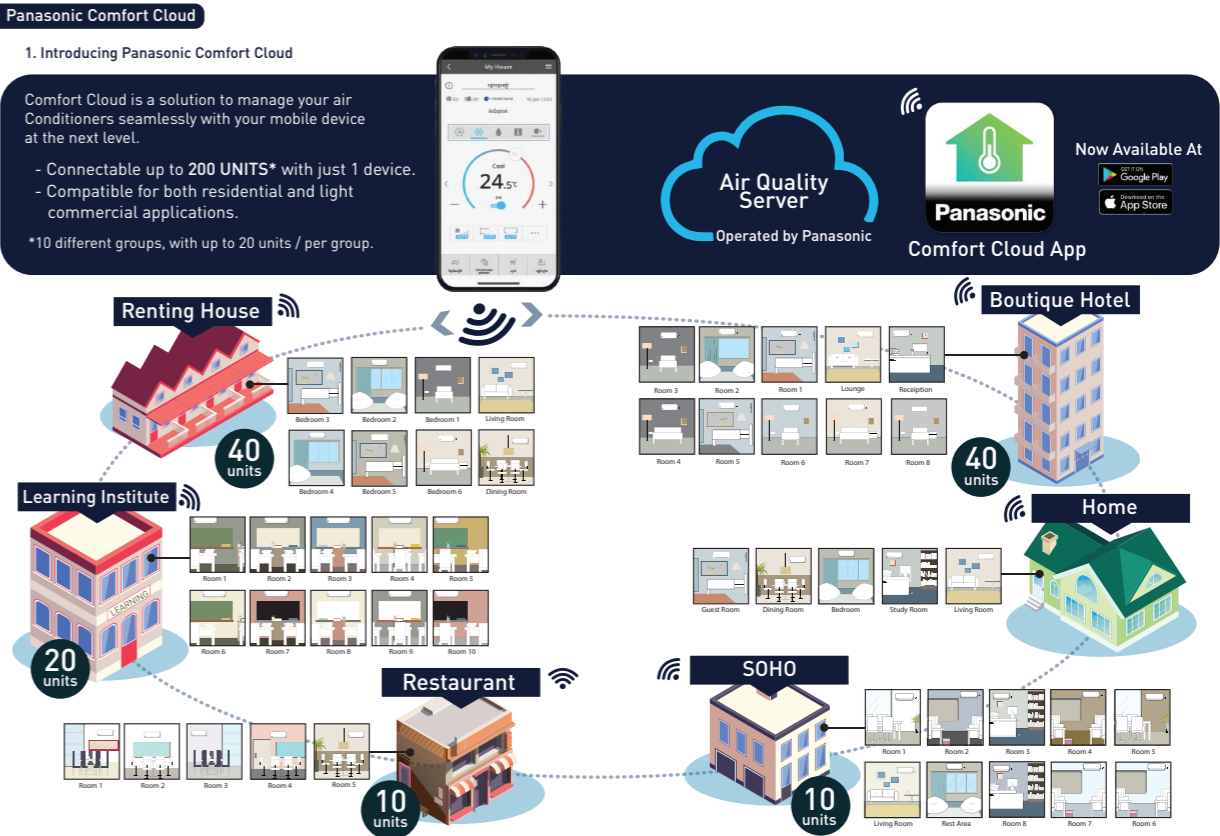
Download WiFi Application



Method to connect application with remoted controllers



Panasonic air conditioners are able to control up to 200 units



* WiFi need to be installed by the customers.

Application of Packaged Air Conditioners

1. Application of 4-Way Cassettes



Gym Place



Hospital



Living Room



Supermarket

2. Application of Ceiling Mounted



Restaurant



Office



Kindergarten



Bed Room

3. Application of Adaptive Ducted



Meeting Room



Clothing Shop



Lounge



Library

Reasons to choose Panasonic Package Air Conditioners



4-Way Cassettes

Powerful airflow, Wide flap, Simplistic design, Easy installation



Ceiling Mounted

Strong airflow, Reasonable Price, Easy maintenance



Adaptive Ducted

Luxury decoration, Low noise operation, Flexible air supply

Application of Packaged Air Conditioners GPF

Advantages of New 4-Way Cassettes

Compact, Modern & Flat Panel Design

Featuring uniform cooling, easy installation, and with a sleek exterior, this unit is the perfect match for all commercial applications.



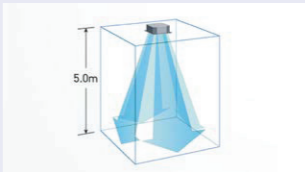
Powerful Airflow

Thanks to its compact design the Twisted 3D Blade Fan increases airflow.



360° Comfortable Airflow

Air coming out of the centre of the discharge outlets travels farther. Air is discharged across a wide area from the four sides of the unit.



Wide Flap

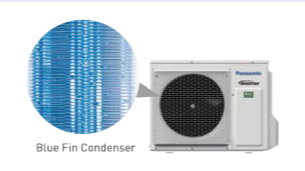
A wider main flap and sub flap reduce turbulence and increase airflow. Also, a wider angle jetting port allows airflow to reach as far as five meters.

* 4-Way Cassette : 3448PU type



Recommend for High Ceiling Places.

Advantages for Outdoor Unit



Hiht Durability Outdoor Unit

All Panasonic heat exchangers feature Blue Fin technology, which offers enhanced corrosion resistance compared to non-Blue Fin models.



In-house manufactured compressor

Panasonic all in-house manufactured compressors are supplied to the world. the cumulative total of high-quality compressors in use has reached 580 million units*.

* As of September 2019. (in-house research)



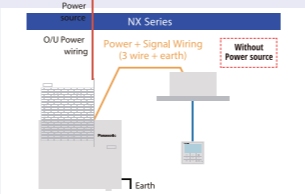
Next Generation R32 Refrigerant

Compared to R22 and R410A, R32 has a very low potential impact on the depletion of the ozone layer and global warming.



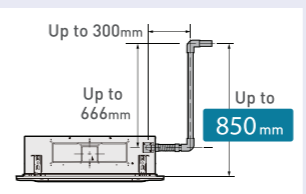
Long-Term Use with Eco-Friendly

Installtion Instruction



3 Wire Method

This NX series has been developed with 3 wire method and communication.



A Strong and quiet drain pump

The drain pump can pump water up to a height of 850mm, making drain pipe layout easy. Supports for 4-Way Cassettes



NEW !!! Operation Temperature

New NX series are capable of working even in the most difficult ambient conditions. Operating range expanded up to outdoor air temperature of 48 °C.



Enjoy continuous operation even in hot summer

Products Spec

4-WAY CASSETTE

- Industry-leading Powerful, 360° Wide & Comfortable Airflow.
- The drain pump can pump water up to a height of 850 mm, making drain pipe layout easy.



Capacity [Btu/h(Phase)]	17,100	20,500	24,200	29,000	34,100	42,700	42,700 [3]	47,800	47,800[3]
Power Source	V/Phase Hz								
Indoor	S-1821PU3H	S-1821PU3H	S-2430PU3H	S-2430PU3H	S-3448PU3H	S-3448PU3H	S-3448PU3H	S-3448PU3H	S-3448PU3H
Outdoor	U-18PR1H5	U-21PR1H5	U-24PR1H5	U-30PR1H5	U-34PR1H5	U-43PR1H5	U-43PR1H5	U-48PR1H8	U-48PR1H8
Panel	CZ-KPU3H	CZ-KPU3H	CZ-KPU3H	CZ-KPU3H	CZ-KPU3H	CZ-KPU3H	CZ-KPU3H	CZ-KPU3H	CZ-KPU3H
Cooling Capacity: Rated (Min-Max)	kW 17,100 (6,820-19,100)	6.00 (2.00-6.30) 20,500 (6,820-21,500)	7.10 (2.10-8.00) 24,200 (7,170-27,300)	8.50 (2.10-10.00) 29,000 (7,170-34,100)	10.00 (3.20-11.20) 34,100 (10,900-38,200)	12.50 (3.80-14.00) 42,700 (13,000-47,800)	12.50 (3.80-14.00) 42,700 (13,000-47,800)	14.00 (3.80-14.71) 47,800 (13,000-50,200)	14.00 (3.80-14.71) 47,800 (13,000-50,200)
Current: Rated (Min-Max)	A 5.2-5.5	7.5-8.0	8.5-9.2	10.7-11.7	13.7-15.0	16.9-18.5	5.6-6.1	21.9-23.9	7.2-7.9
Power Input: Rated (Min-Max)	kW 1.14 (0.38-1.50)	1.71 (0.38-2.10)	1.99 (0.30-2.26)	2.52 (0.28-3.33)	3.23 (0.61-3.73)	3.74 (0.63-4.25)	3.74 (0.63-4.25)	4.83 (0.63-5.10)	4.83 (0.63-5.10)
CSPF	6.27	5.89	6.08	5.97	5.89	5.80	5.23	5.23	5.23
COP/EER	W/W 4.39	3.51	3.57	3.37	3.10	3.34	2.90	2.90	2.90
COP/EER	Btu/hW 15.00	11.99	12.16	11.51	10.56	11.42	9.90	9.90	9.90
Indoor Unit									
Air Volume	m³/min cfm	25.0 882	25.0 882	25.0 882	25.0 882	36.4 1,285	36.4 1,285	36.4 1,285	36.4 1,285
Sound Pressure Level (Hi/Lo)	dB (A)	42 / 35	42 / 35	42 / 35	42 / 35	47 / 41	47 / 41	47 / 41	47 / 41
Sound Power Level (Hi/Lo)	dB	57 / 50	57 / 50	57 / 50	57 / 50	62 / 56	62 / 56	62 / 56	62 / 56
Dimension	Indoor (HxWxD) Panel (HxWxD)	mm 256 x 840 x 840 44 x 950 x 950	256 x 840 x 840 44 x 950 x 950	256 x 840 x 840 44 x 950 x 950	256 x 840 x 840 44 x 950 x 950	319 x 840 x 840 44 x 950 x 950	319 x 840 x 840 44 x 950 x 950	319 x 840 x 840 44 x 950 x 950	319 x 840 x 840 44 x 950 x 950
Net Weight	Indoor Panel	kg 21 5	21 5	21 5	21 5	24 5	24 5	24 5	24 5
Outdoor									
Sound Pressure Level	dB (A)	49	50	51	53	55	57	58	58
Sound Power Level	dB	68	69	70	72	74	76	77	77
Dimension	Outdoor (HxWxD)	mm	619 x 824 x 299	619 x 824 x 299	619 x 824 x 299	695 x 875 x 320	695 x 875 x 320	996 x 980 x 370	996 x 980 x 370
Net Weight	kg	29	29	33	39	48	68	67	67
Piping Connection	Gas Pipe Liquid Pipe	mm (inch) 12.70 (1/2) 6.35 (1/4)	12.70 (1/2) 6.35 (1/4)	15.88 (5/8) 9.52 (3/8)	15.88 (5/8) 9.52 (3/8)	15.88 (5/8) 9.52 (3/8)	15.88 (5/8) 9.52 (3/8)	15.88 (5/8) 9.52 (3/8)	15.88 (5/8) 9.52 (3/8)
Pipe Length	Min-Max	m	5 - 30	5 - 30	5 - 30	5 - 50	5 - 50	5 - 50	5 - 50
Elevation Difference	m	20	20	20	30	30	30	30	30
Maximum Chargeless Length	Max	m	15	15	25	25	25	25	25
Additional Gas	g/m	10	10	10	30	30	30	30	30
Operation Range, Outdoor	Min-Max	°C	16-46	16-46	16-46	16-46	16-46	16-46	16-46

* Specifications are subject to change without notice. Please refer to technical documents for more details.
* The sound pressure level is measured in accordance with JIS C 9612 and JIS B 8616.

CEILING MOUNTED

- The slim design makes thickness only 235 mm.
- Compact Looking, Stylish, One-Motion Design.
- Comfortable, Long-Distance Airflow Distribution.



Capacity [Btu/h(Phase)]	17,100	20,500	24,200	29,000	34,100	42,700	42,700 [3]	45,500	45,500[3]
Power Source	V/Phase Hz								
Indoor	S-1821PT3H	S-1821PT3H	S-2430PT3H	S-2430PT3H	S-3448PT3H	S-3448PT3H	S-3448PT3H	S-3448PT3H	S-3448PT3H
Outdoor	U-18PR1H5	U-21PR1H5	U-24PR1H5	U-30PR1H5	U-34PR1H5	U-43PR1H5	U-43PR1H5	U-48PR1H8	U-48PR1H8
Cooling Capacity: Rated (Min-Max)	kW 17,100 (6,820-19,100)	6.00 (2.00-6.30) 20,500 (6,820-21,500)	7.10 (2.00-7.80) 24,200 (6,820-26,600)	8.50 (2.00-9.60) 29,000 (6,820-32,800)	10.00 (3.20-11.20) 34,100 (10,900-38,200)	12.50 (3.80-13.54) 42,700 (13,000-46,200)	12.50 (3.80-13.54) 42,700 (13,000-46,200)	13.33 (3.80-14.00) 45,500 (13,000-47,800)	13.33 (3.80-14.00) 45,500 (13,000-47,800)
Current: Rated (Min-Max)	A 5.9-6.2	8.4-9.0	8.9-9.7	11.7-12.8	14.3-15.6	18.6-20.3	6.1-6.7	20.4-22.2	6.7-7.4
Power Input: Rated (Min-Max)	kW 1.33 (0.39-1.65)	1.92 (0.39-2.25)	2.00 (0.32-2.36)	2.75 (0.29-3.31)	3.36 (0.58-3.77)	4.10 (0.68-4.50)	4.10 (0.68-4.50)	4.50 (0.68-4.80)	4.50 (0.68-4.80)
CSPF	6.18	5.65	5.65	5.04	5.08	5.08	4.98	4.98	4.98
COP/EER	W/W 3.76	3.13	3.38	3.09	2.98	3.05	2.96	2.96	2.96
COP/EER	Btu/hW 12.86	10.68	10.68	11.52	10.55	10.15	10.41	10.11	10.11
Indoor Unit									
Air Volume	m³/min cfm	15.0 530	15.0 530	21.0 740	21.0 740	35.0 1,235	35.0 1,235	35.0 1,235	35.0 1,235
Sound Pressure Level (Hi/Lo)	dB (A)	38 / 29	38 / 29	40 / 32	40 / 32	46 / 38	46 / 38	46 / 38	46 / 38
Sound Power Level (Hi/Lo)	dB	56 / 47	56 / 47	58 / 50	58 / 50	64 / 56	64 / 56	64 / 56	64 / 56
Dimension	Indoor (HxWxD)	mm	235 x 960 x 690	235 x 960 x 690	235 x 1,275 x 690	235 x 1,275 x 690	235 x 1,590 x 690	235 x 1,590 x 690	235 x 1,590 x 690
Net Weight	Indoor	kg	26	26	34	34	40	40	40
Outdoor									
Sound Pressure Level	dB (A)	50	51	51	53	55	57	58	58
Sound Power Level	dB	69	70	70	72	74	76	77	77
Dimension	Outdoor (HxWxD)	mm	619 x 824 x 299	619 x 824 x 299	619 x 824 x 299	695 x 875 x 320	695 x 875 x 320	996 x 980 x 370	996 x 980 x 370
Net Weight	kg	29	29	33	39	48	68	67	67
Piping Connection	Gas Pipe Liquid Pipe	mm (inch) 12.70 (1/2) 6.35 (1/4)	12.70 (1/2) 6.35 (1/4)	15.88 (5/8) 9.52 (3/8)	15.88 (5/8) 9.52 (3/8)	15.88 (5/8) 9.52 (3/8)	15.88 (5/8) 9.52 (3/8)	15.88 (5/8) 9.52 (3/8)	15.88 (5/8) 9.52 (3/8)
Pipe Length	Min-Max	m	5 - 30	5 - 30	5 - 30	5 - 50	5 - 50	5 - 50	5 - 50
Elevation Difference	m	20	20	20	30	30	30	30	30
Maximum Chargeless Length	Max	m	15	15	25	25	25	25	25
Additional Gas	g/m	10	10	10	30	30	30	30	30
Operation Range, Outdoor	Min-Max	°C	16-46	16-46	16-46	16-46	16-46	16-46	16-46

* Specifications are subject to change without notice. Please refer to technical documents for more details.
* The sound pressure level is measured in accordance with JIS C 9612 and JIS B 8616.

ADAPTIVE DUCTED

- Air intake from rear as standard. Industry-leading horizontal and vertical design.
- Powerful 150Pa ESP and space saving 250 mm height, filter included.
- Built-in Drain pump and selectable air inlet position (Bottom and Rear).

Remote
Controller



CZ-RTC6BLW [BLE&WLAN]



CZ-RWS3 Wireless Remote Controller
+ CZ-RWRC3 Receiver

[Optional]

R32
REFRIGERANT

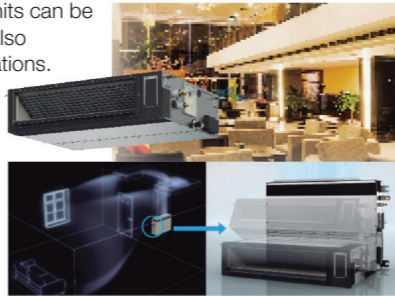
Capacity [Btu/h(Phase)]	17,100	20,500	24,200	27,600	34,100	42,700	42,700 [3]	47,000	47,000[3]
Power Source	V/Phase Hz								
Indoor	S-1821PF3H	S-1821PF3H	S-2430PF3H	S-2430PF3H	S-3448PF3H	S-3448PF3H	S-3448PF3H	S-3448PF3H	S-3448PF3H
Outdoor	U-18PR1H5	U-21PR1H5	U-24PR1H5	U-30PR1H5	U-34PR1H5	U-43PR1H5	U-43PR1H5	U-48PR1H8	U-48PR1H8
Cooling Capacity: Rated (Min-Max)	kW 17,100 (6,820-19,100)	6.00 (2.00-6.30) 20,500 (6,820-21,500)	7.10 (2.00-7.60) 24,200 (6,820-25,900)	8.10 (2.00-8.90) 27,600 (6,820-30,400)	10.00 (3.20-11.20) 34,100 (10,900-38,200)	12.50 (3.80-13.50) 42,700 (13,000-46,100)	12.50 (3.80-13.50) 42,700 (13,000-46,100)	13.77 (3.80-14.20) 47,000 (13,000-48,500)	13.77 (3.80-14.20) 47,000 (13,000-48,500)
Current: Rated (Min-Max)	A 6.8-7.2	8.6-9.1	9.7-10.5	11.1-12.1	13.3-14.5	17.9-19.6	5.9-6.5	21.6-23.6	7.1-7.8
Power Input: Rated (Min-Max)	kW 1.54 (0.41-1.75)	1.95 (0.41-2.30)	2.27 (0.34-2.48)	2.60 (0.33-2.90)	3.12 (0.59-3.65)	3.96 (0.65-4.35)	3.96 (0.65-4.35)	4.77 (0.65-4.95)	4.77 (0.65-4.95)
CSPF	5.02	4.65	5.21	5.21	4.74	5.02	5.02	4.74	4.74
COP/EER	W/W 3.25	3.08	3.13	3.12	3.21	3.16	3.16	2.89	2.89
COP/EER	Btu/hW 11.10	10.51	10.66	10.62	10.93	10.78	10.78	9.85	9.85
Indoor Unit									
Air Volume	m³/min cfm	16.0 565	16.0 565	21.0 740	21.0 740	36.0 1,270	36.0 1,270	36.0 1,270	36.0 1,270
External static pressure	Pa	30 (10-150)	30 (10-150)	30 (10-150)	30 (10-150)	50 (10-150)	50 (10-150)	50 (10-150)	50 (10-150)
Sound Pressure Level (Hi/Lo)	dB (A)	35 / 29	35 / 29	35 / 29	35 / 29	40 / 30	40 / 30	40 / 30	40 / 30
Sound Power Level (Hi/Lo)	dB	58 / 52	58 / 52	58 / 52	58 / 52	63 / 53	63 / 53	63 / 53	63 / 53
Dimension	Indoor (HxWxD)	mm	250 x 800 x 730	250 x 800 x 730	250 x 1,000 x 730	250 x 1,000 x 730	250 x 1,400 x 730	250 x 1,400 x 730	250 x 1,400 x 730
Net Weight	Indoor	kg	25	25	30	30	39	39	39
Outdoor									
Sound Pressure Level	dB (A)	50	51	51	53	55	57	57	58
Sound Power Level	dB	69	70	70	72	74	76	77	77
Dimension	Outdoor (HxWxD)	mm	619 x 824 x 299	619 x 824 x 299	619 x 824 x 299	695 x 875 x 320	695 x 875 x 320	996 x 980 x 370	996 x 980 x 370
Net Weight	kg	29	29	33	39	48	68	67	67
Piping Connection	Gas Pipe Liquid Pipe	mm (inch) 12.70 (1/2) 6.35 (1/4)	12.70 (1/2) 6.35 (1/4)	15.88 (5/8) 9.52 (3/8)	15.88 (5/8) 9.52 (3/8)	15.88 (5/8) 9.52 (3/8)	15.88 (5/8) 9.52 (3/8)	15.88 (5/8) 9.52 (3/8)	15.88 (5/8) 9.52 (3/8)
Pipe Length	Min-Max	m	5 - 30	5 - 30	5 - 30	5 - 50	5 - 50	5 - 50	5 - 50
Elevation Difference	m	20	20	20	30	30	30	30	30
Maximum Chargeless Length	Max	m	15	15	25	25	25	25	25
Additional Gas	g/m	10	10	10	30	30	30	30	30
Operation Range, Outdoor	Min-Max	°C	16-46	16-46	16-46	16-46	16-46	16-46	16-46

* Specifications are subject to change without notice. Please refer to technical documents for more details.
* The sound pressure level is measured in accordance with JIS C 9612 and JIS B 8616.

NEW

Flexible Installation Adaptive Ducted

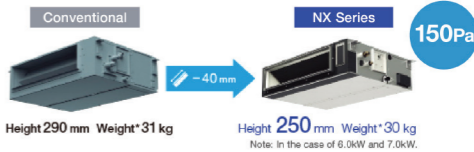
New NX Series Adaptive Ducted units can be mounted not only horizontally but also vertically without the need for alterations. Our groundbreaking drain pan design delivers a new level of flexibility in an industry-leading vertical installation.



Compact Body with Powerful 150 Pa ESP

The indoor units have also been completely renewed, offering a 40 mm height reduction to only 250 mm* and a weight reduction of up to 10%, all while maintaining the same powerful 150 Pa.
*Compared to conventional model.

Space saving 250 mm height



Remote Controller Information



NEW

Service Purpose

H&C Diagnosis App

- Obtain operation sata via Bluetooth
- * Can be used with new NX Series

NEW

Maintenance Purpose

H&C Control App

- Detail operation setting via Bluetooth
- Detail maintenance setting via Bluetooth