



# Panasonic SmartApp+ Operating Instructions



# Contents

<b>Account Setting and Connection .....</b>	<b>3</b>
<b>General Settings .....</b>	<b>5</b>
<b>Main Screen.....</b>	<b>10</b>
<b>Fridge Tab.....</b>	<b>11</b>
<b>1. Control Temperatures of Compartments .....</b>	<b>12</b>
<b>2. Control Modes.....</b>	<b>13</b>
<b>Log Tab.....</b>	<b>21</b>
<b>Information Tab.....</b>	<b>25</b>
<b>Settings.....</b>	<b>26</b>
<b>Troubleshooting .....</b>	<b>34</b>

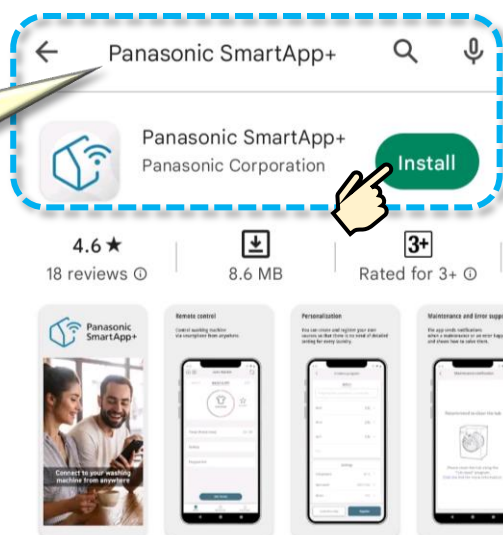
# Account Setting and Connection (1)

Panasonic SmartApp+ application is available on iOS and Android platforms. You need to download the application to your smartphone and set up the initial settings to connect the application with the refrigerator and wireless LAN (Wi-Fi).

## ■ Download the Application and Register a New Account

### ① Download and install the application.

**Method 1: In the App Store or Google Play on your smartphone, search “Panasonic Smart App+” and install it.**



**Method 2: Scan the QR code here to go to the download page and install the application.**



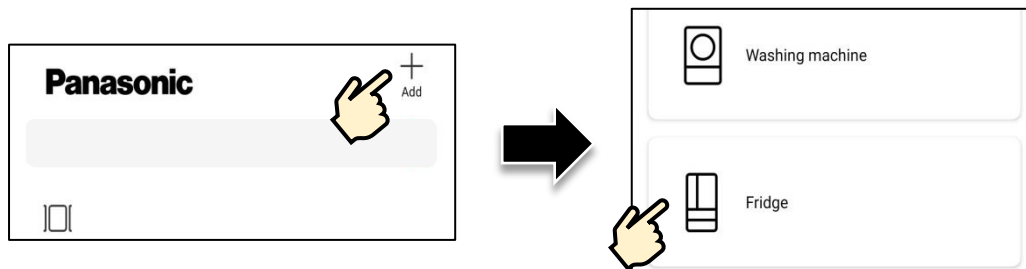
<https://www.panasonic.com/fiot/fridge/>

### ② Sign up by your Email account to use the application.

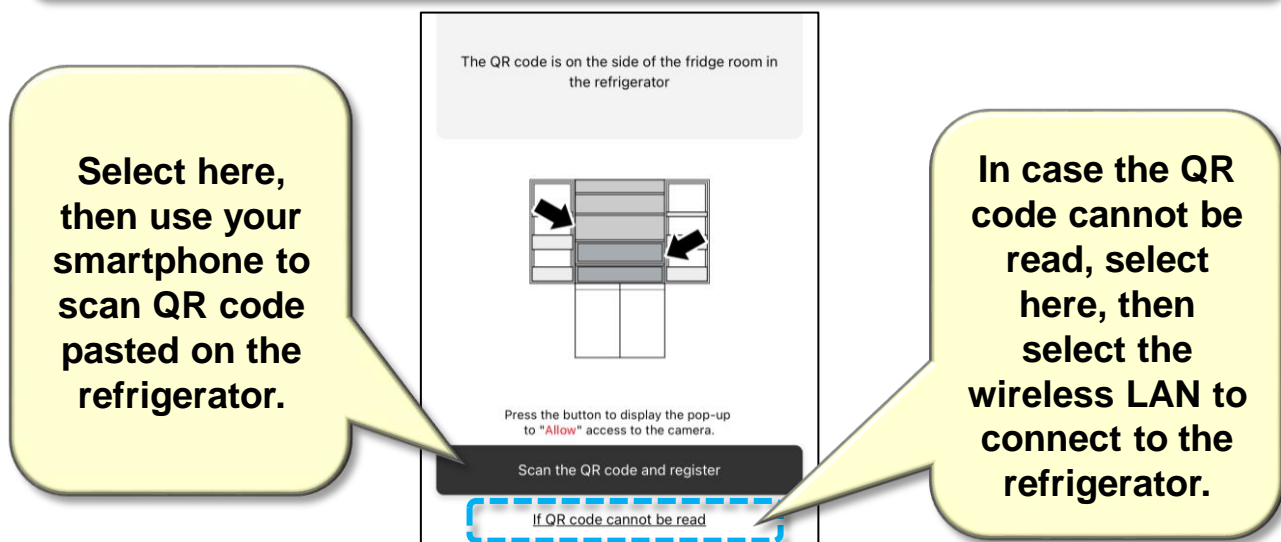
# Account Setting and Connection (2)

## ■ Connect the application to the refrigerator and wireless LAN (Wi-Fi)

- ① Plug in the refrigerator and wait for about 1 minute.
- ② Start the application, select “Add” and “Fridge”.



- ③ Follow the instructions on the application screen to initiate the connection.



### Attention

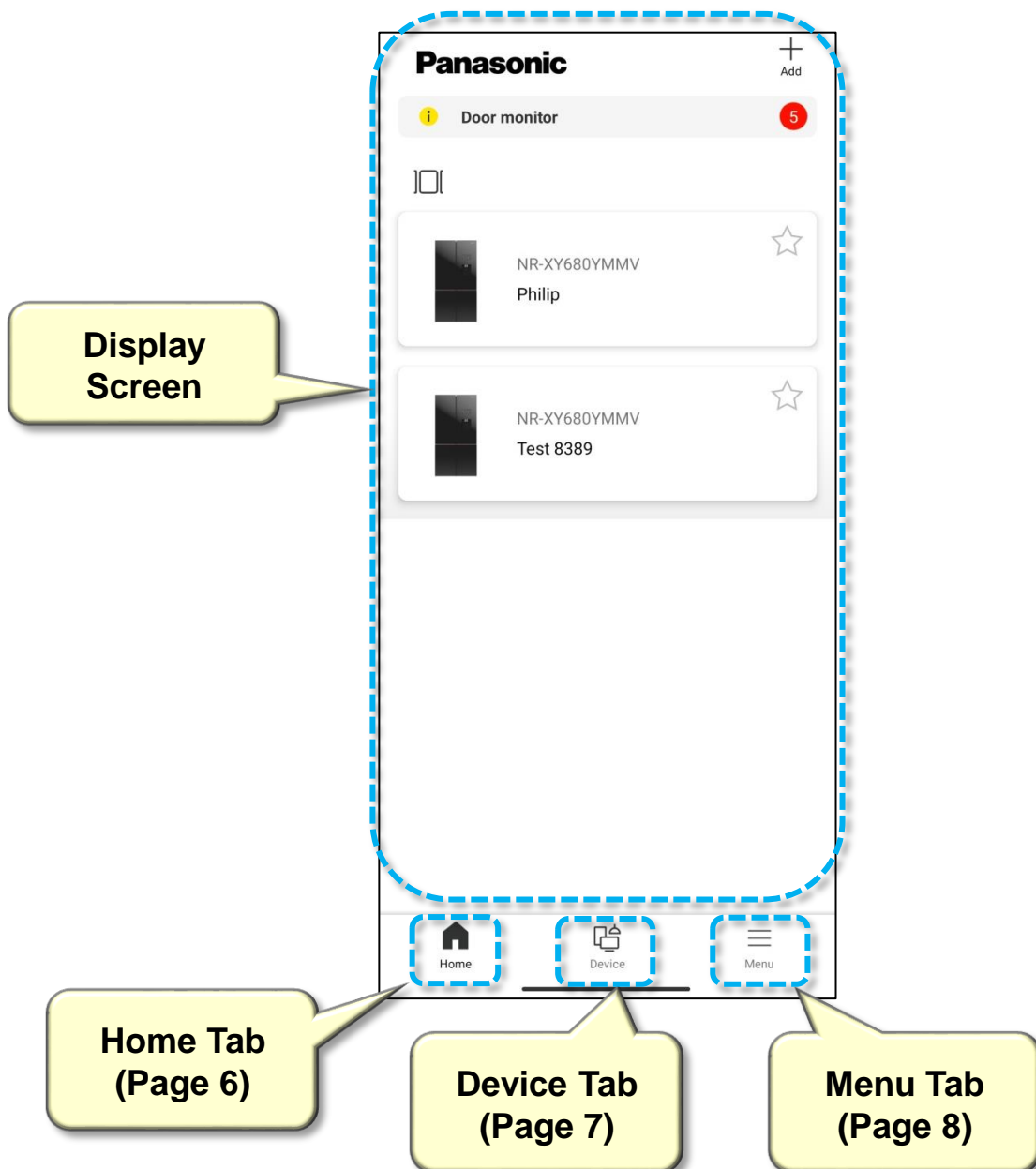
- While the refrigerator connection is in progress, you will not be able to control the refrigerator from the Operation Panel. To use the Operation Panel, you need to disconnect by pressing and holding the “REMOTE” button for 3 seconds.
- During the connection process, there will be icons C1, C2, C4, C5, C9 displayed on the Operation Panel, in some cases the display time of C1 is very short so it may not be visible.

# General Settings (1)

After your refrigerator is successfully connected, the General Screen of the application is displayed as below.

On the General Screen, you can view an overview of newly added devices, view terms of use information and set up some general information such as notification settings, shortcut settings, adding new devices, change the device name, log out, etc.

## General Screen



# General Settings (2)

## ■ Home Tab

On the General Screen, select “Home”.

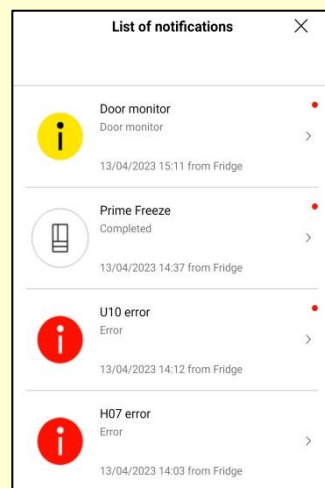
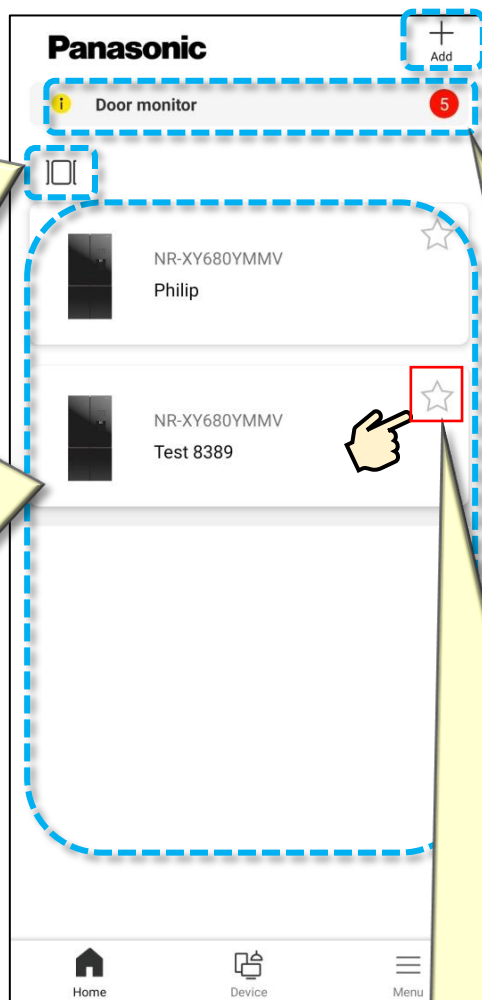



Change the display of the added device list (from portrait to landscape or vice versa).

Add the new device.

Display notifications of added devices.

The added device list. Tap to the device you want to set, the application will go to the Main Screen of the selected device.

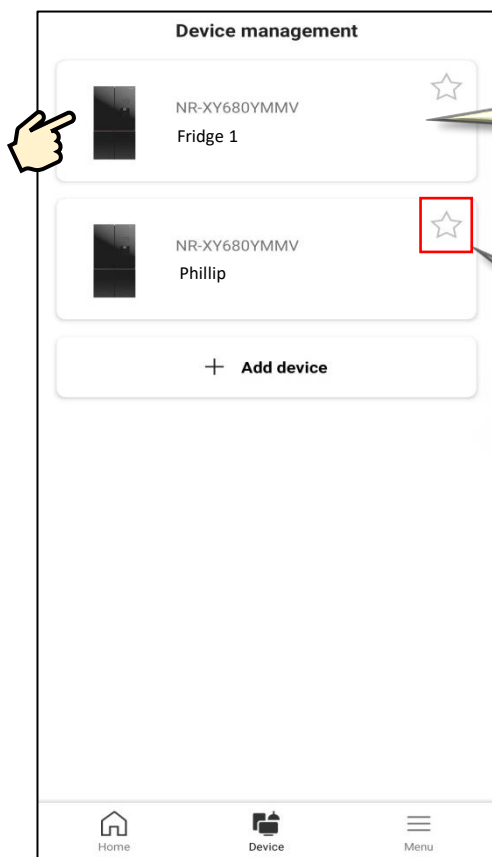


Tap to the icon  to create a shortcut for the device. Then, the Main Screen of the selected device will be automatically displayed when the application starts. (A shortcut can be created for only one device.)

# General Settings (3)

## ■ Device Tab

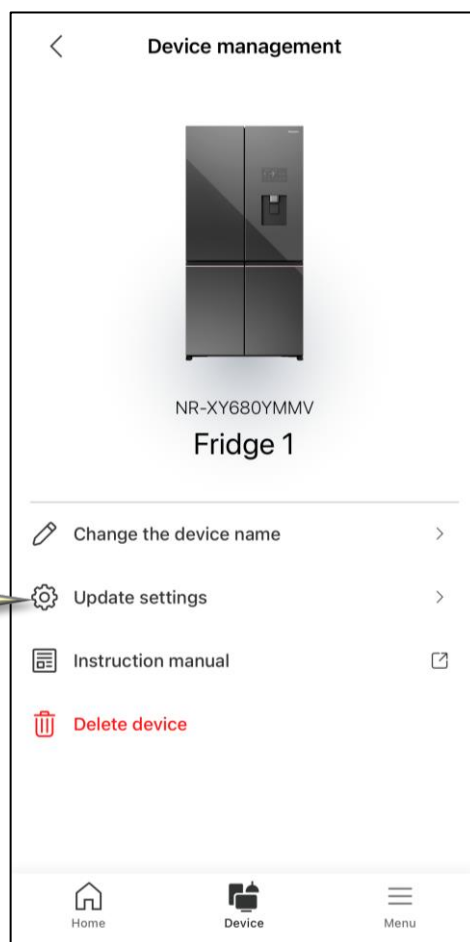
On the General Screen, select “Device”.



Select the device for which you want to manage general information.

A shortcut for the device can be created while in Device management.

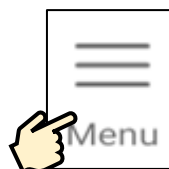
Update settings of the device. (Page 33)



# General Settings (4)

## ■ Menu Tab

On the General screen, select “Menu”.



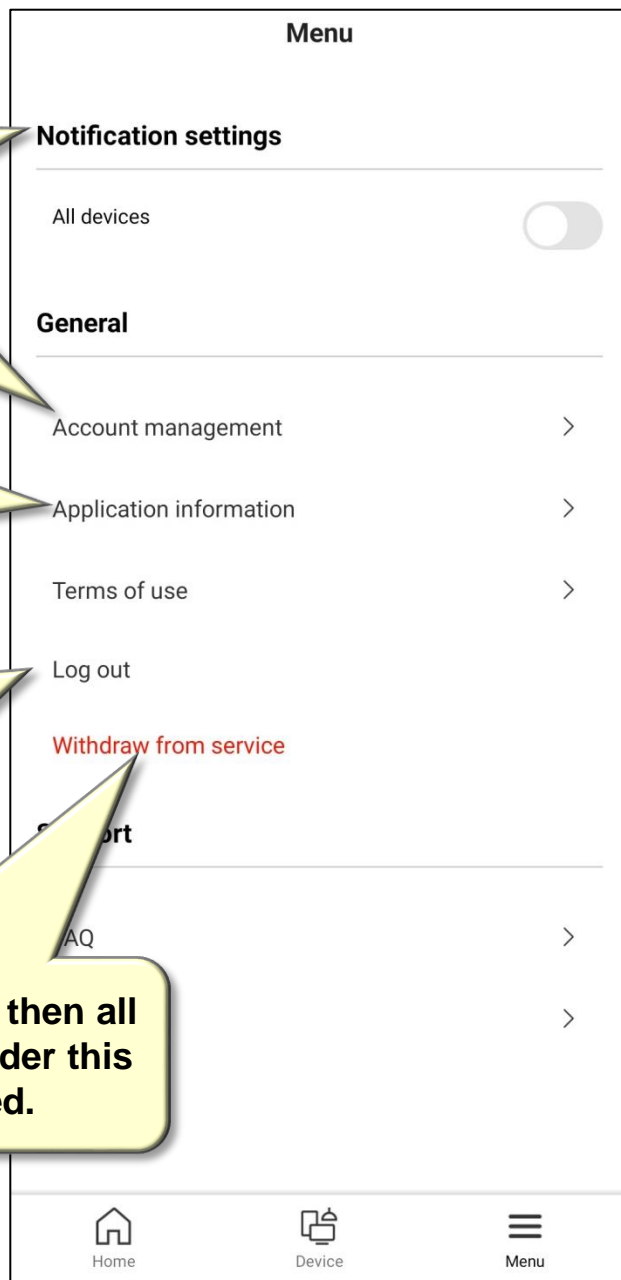
**Notification settings  
(Page 9).**

**Manage user information  
and login (change  
password, view login  
history, etc).**

**Check information about the  
application copyright.**

**Log your account out.  
All devices registered under  
this account will not be  
deleted.**

**Withdraw from the service, then all  
your devices registered under this  
account will be deleted.**

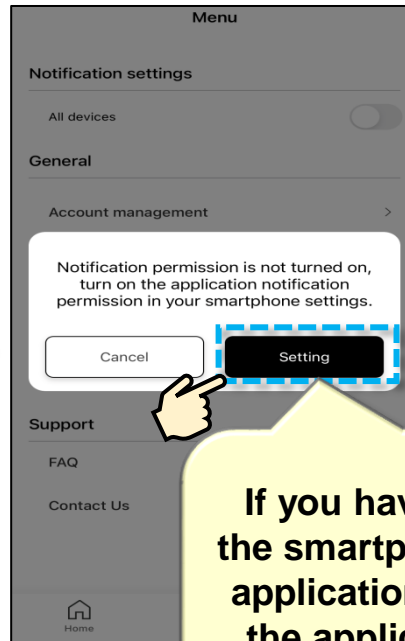
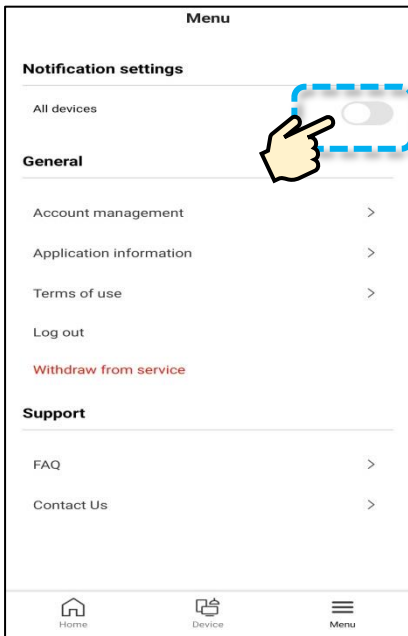




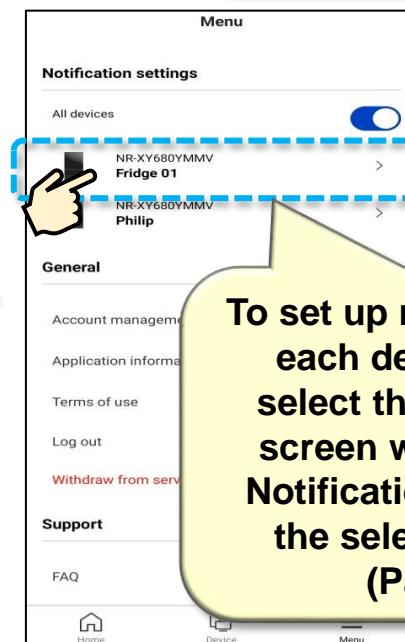
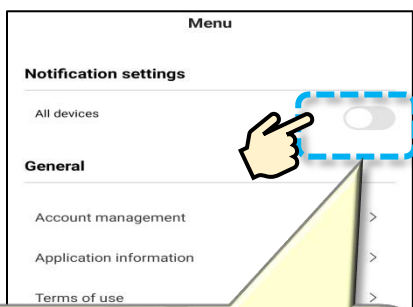
# General Settings (5)

## Notification Settings

In Notification Settings section in the Menu Tab, you can set up whether you want to receive notifications or not.



If you have not allowed the smartphone to receive application notifications, the application will ask you for permission.

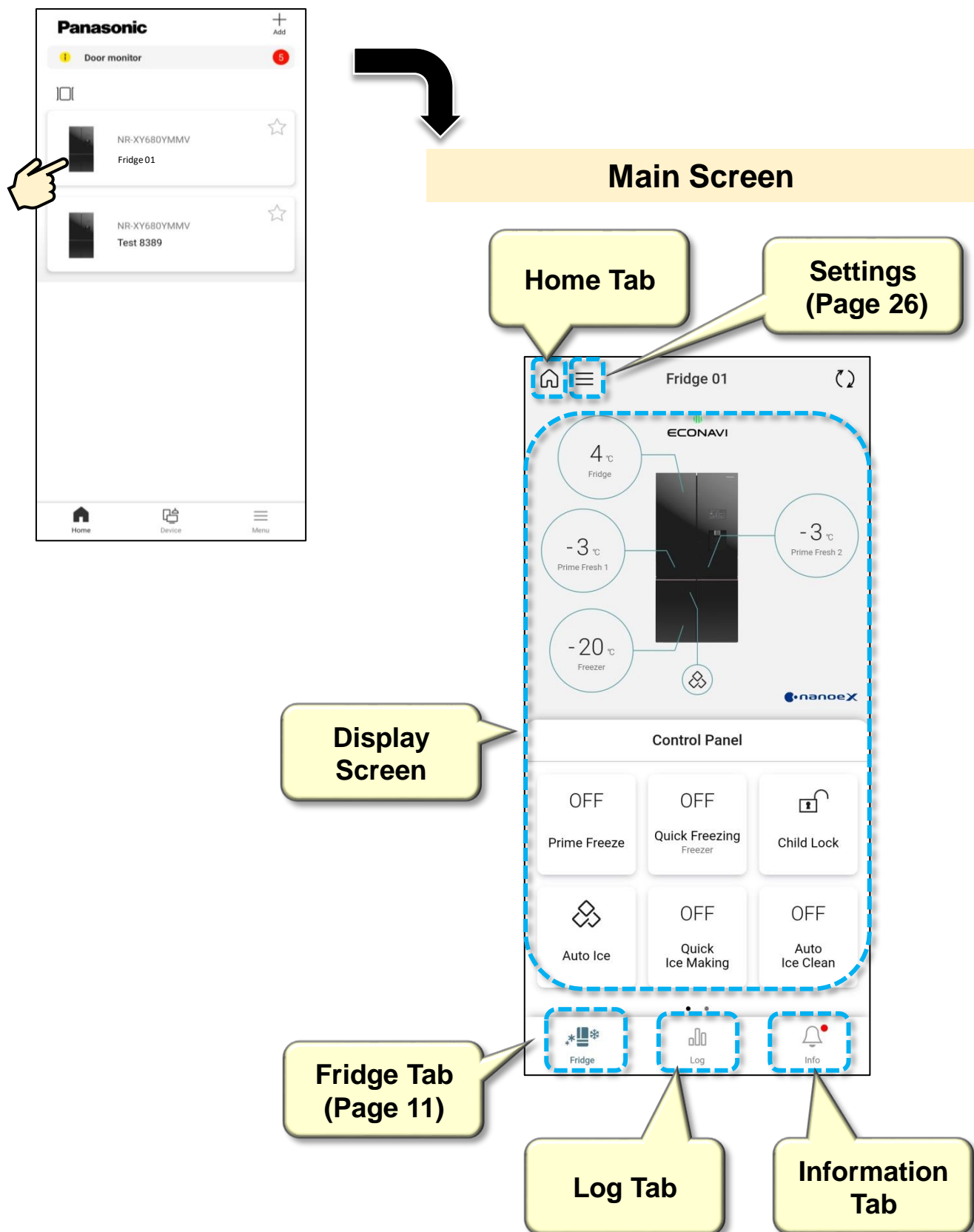


After you have allowed the smartphone to receive application notifications, please re-enable Notification Settings here.

To set up notifications by each device, please select the device. The screen will then go to Notification Settings of the selected device. (Page 27)

# Main Screen

On the Home Tab screen, select the device you want to control. The Main Screen of the application is displayed as below.

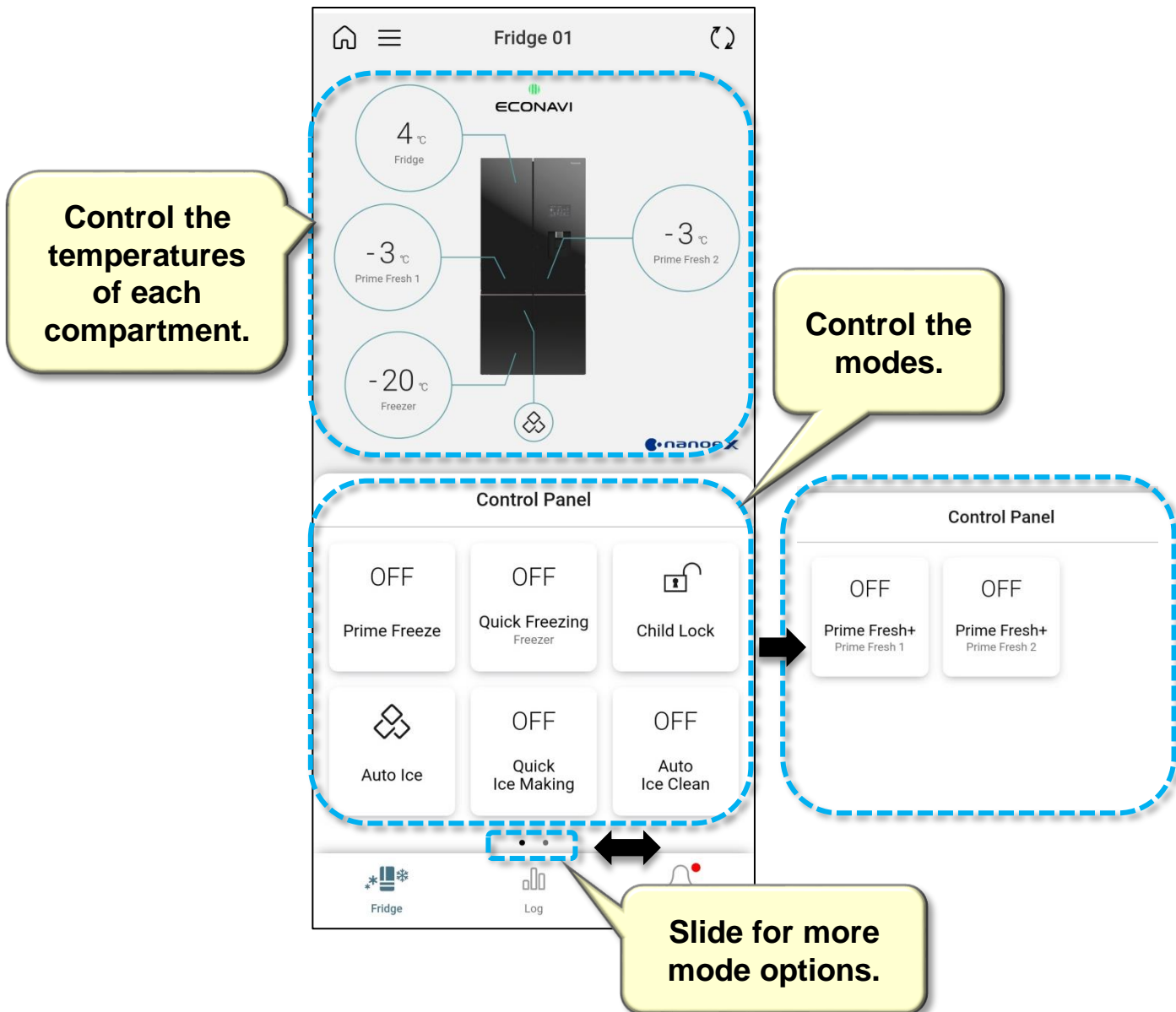


# Fridge Tab (1)

On the Main Screen, select “Fridge”.



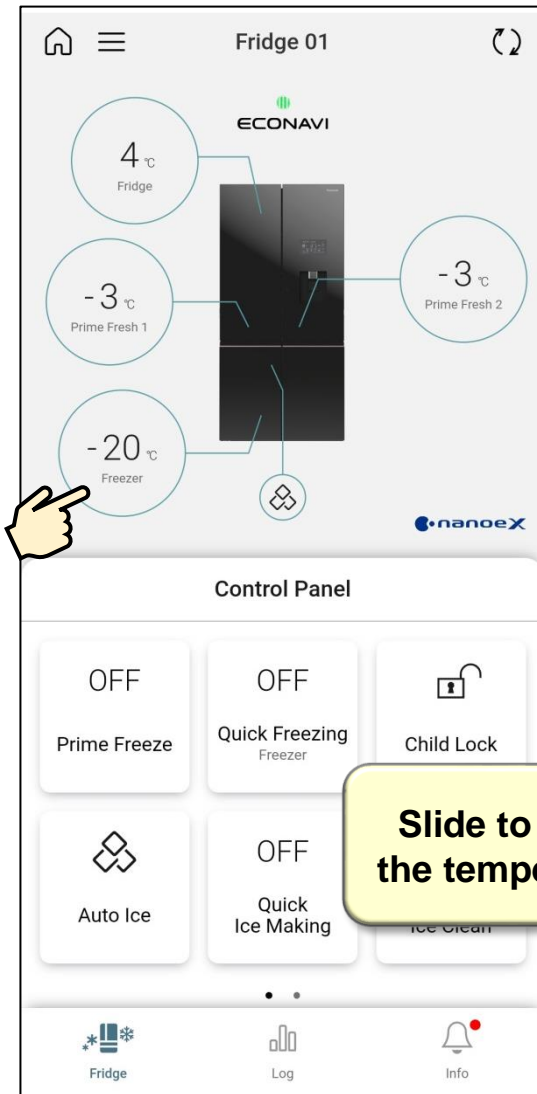
The display screen of the Fridge Tab is displayed as below, allowing you to control the temperatures of each compartment and the modes.



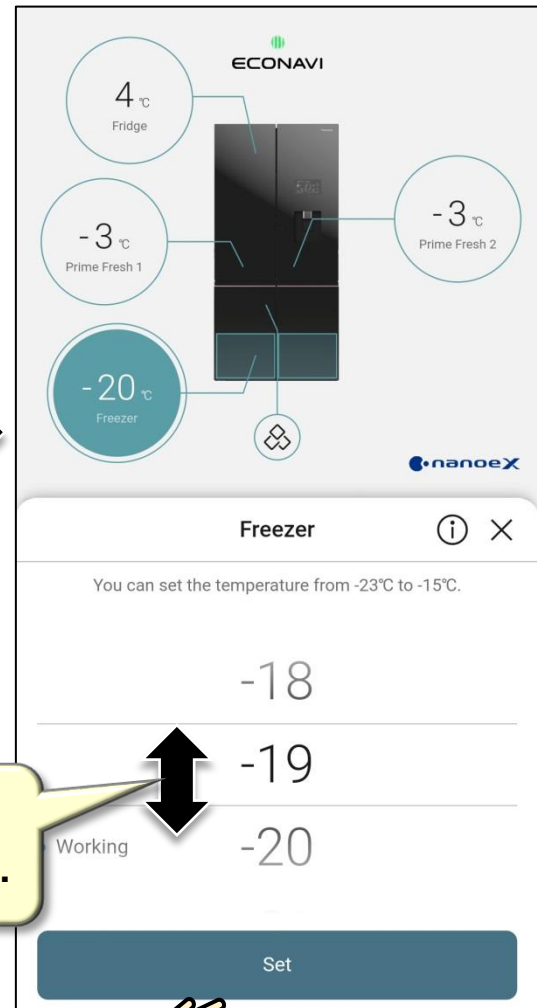
# Fridge Tab (2)

## 1. Control the Temperatures of Each Compartment

① Select the compartment.



② Select the temperature.



Slide to select the temperature.

③ Tap "Set" to confirm.

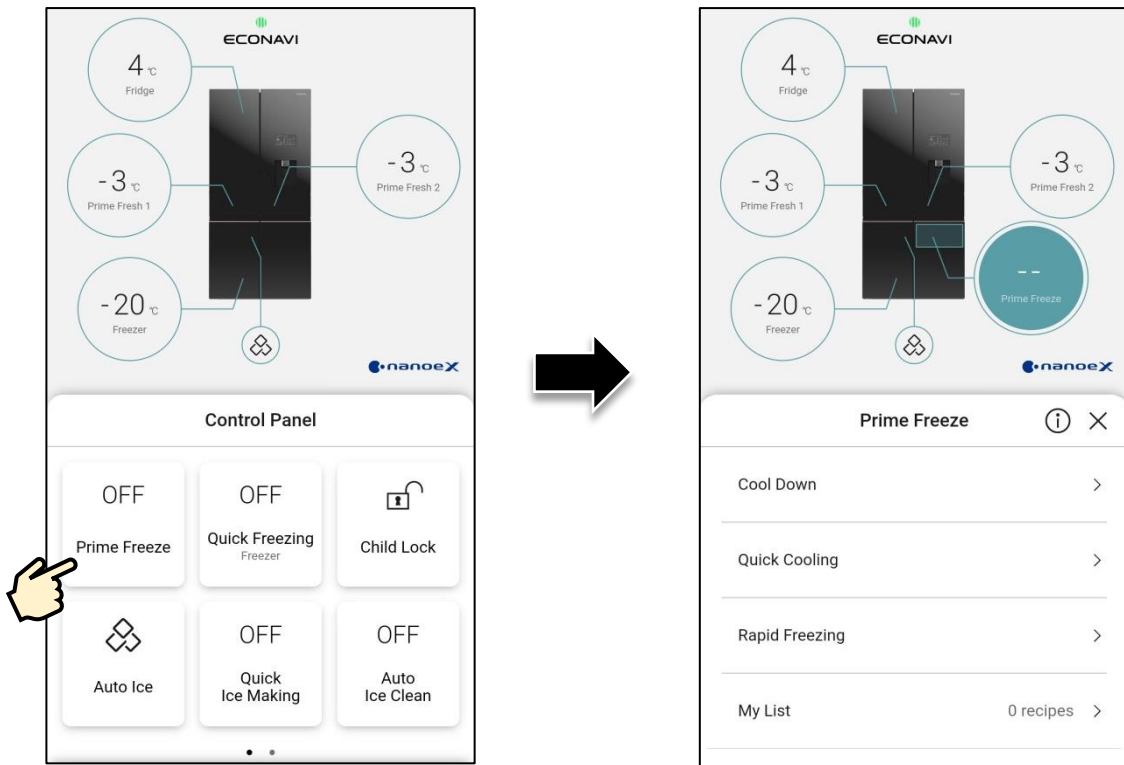
# Fridge Tab (3)

## 2. Control the Modes

### Prime Freeze Operation

① On Control Panel, select “Prime Freeze”.

② Select the mode.



There are three modes available for the Prime Freeze:

- **Cool Down**
- **Quick Cooling**
- **Rapid Freezing**

In addition, the application offers a **My List** function, which allows you to save your settings for future use.

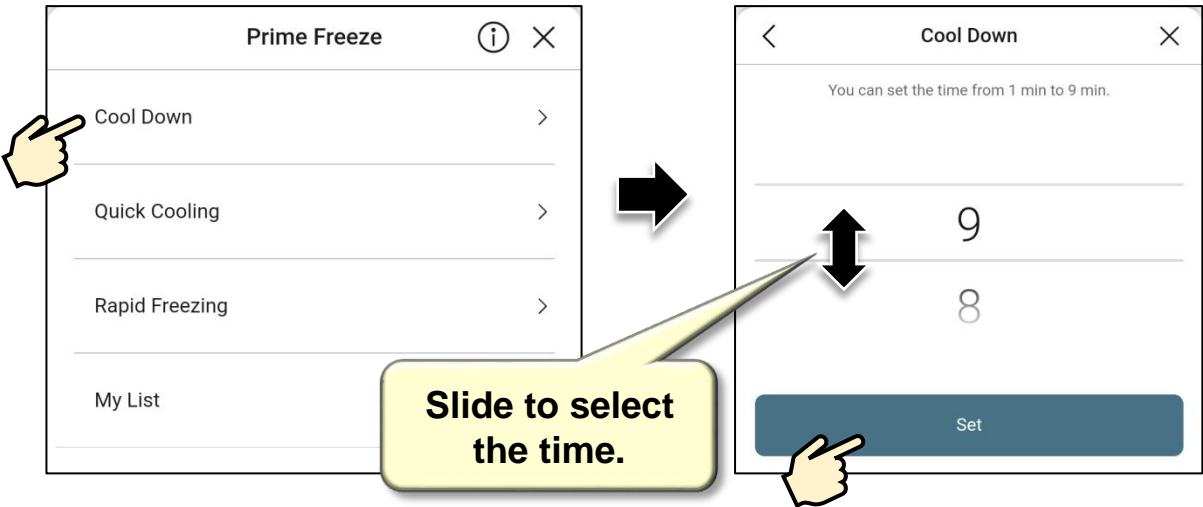
# Fridge Tab (4)

## Prime Freeze Operation (Continued)

### ■ Start Prime Freeze

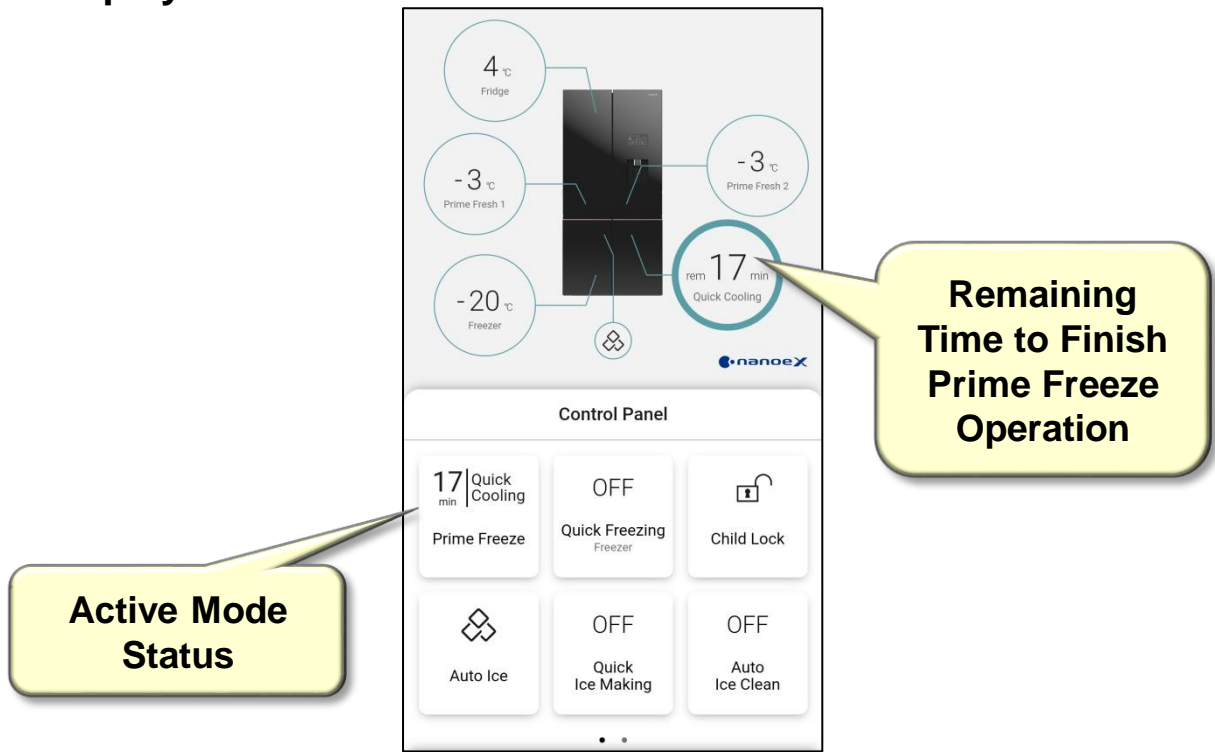
① Select the mode.

② Select the time.



③ Tap “Set” to confirm.

After the setting of Prime Freeze operation, the operation status is displayed as below:



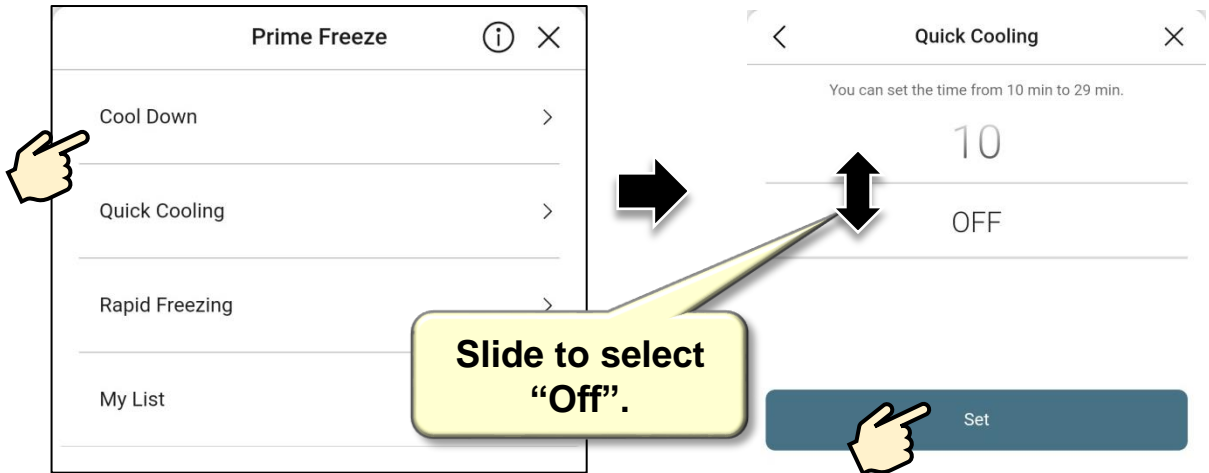
# Fridge Tab (5)

## Prime Freeze Operation (Continued)

### ■ Stop Prime Freeze

① Select the mode.

② Slide to select “Off”.



③ Tap “Set” to confirm.

# Fridge Tab (6)

## Prime Freeze Operation (Continued)

### ■ My List

#### • Create a new recipe

- ① Select “My List”.
- ② Select “Create a new recipe”.
- ③ Enter recipe name, select mode and time.
- ④ Tap “Save” to save the recipe.

Create a new recipe

Recipe name \*  
Less than 15 characters

List 1

Programs

Cool Down Quick Cooling Rapid Freezing

You can set the time from 10 min to 29 min.

29  
28

Cancel Save

### Attention

You can save up to 10 recipes.

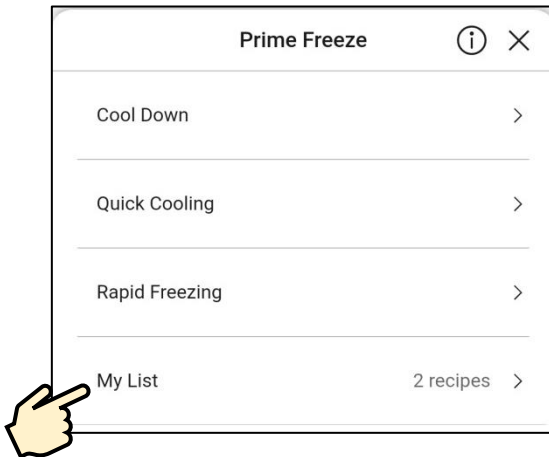


# Fridge Tab (7)

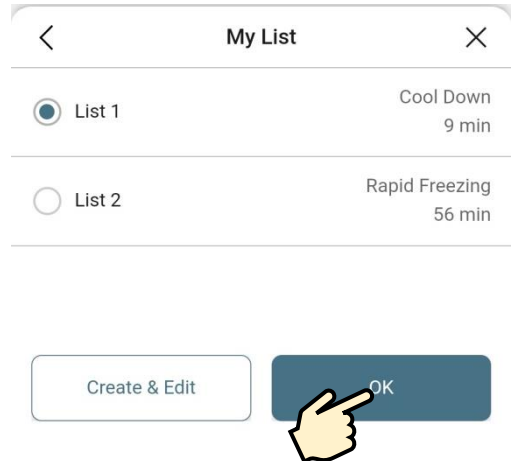
## Prime Freeze Operation (Continued)

- To apply a saved recipe

① Select “My List”.



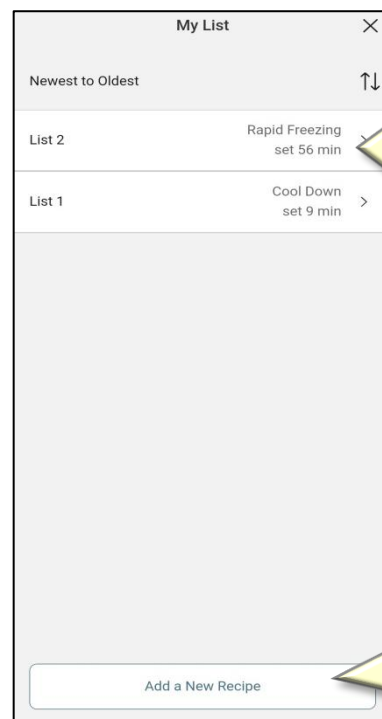
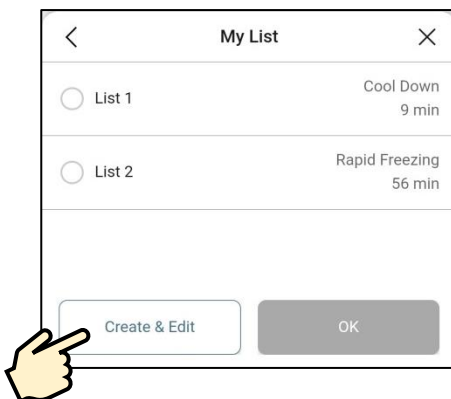
② Select the recipe.



③ Tap “OK” to confirm.

- To add, edit or delete a saved recipe

On My List, select “Create & Edit”.



Select the recipe to edit or delete.

Select to add a new recipe.

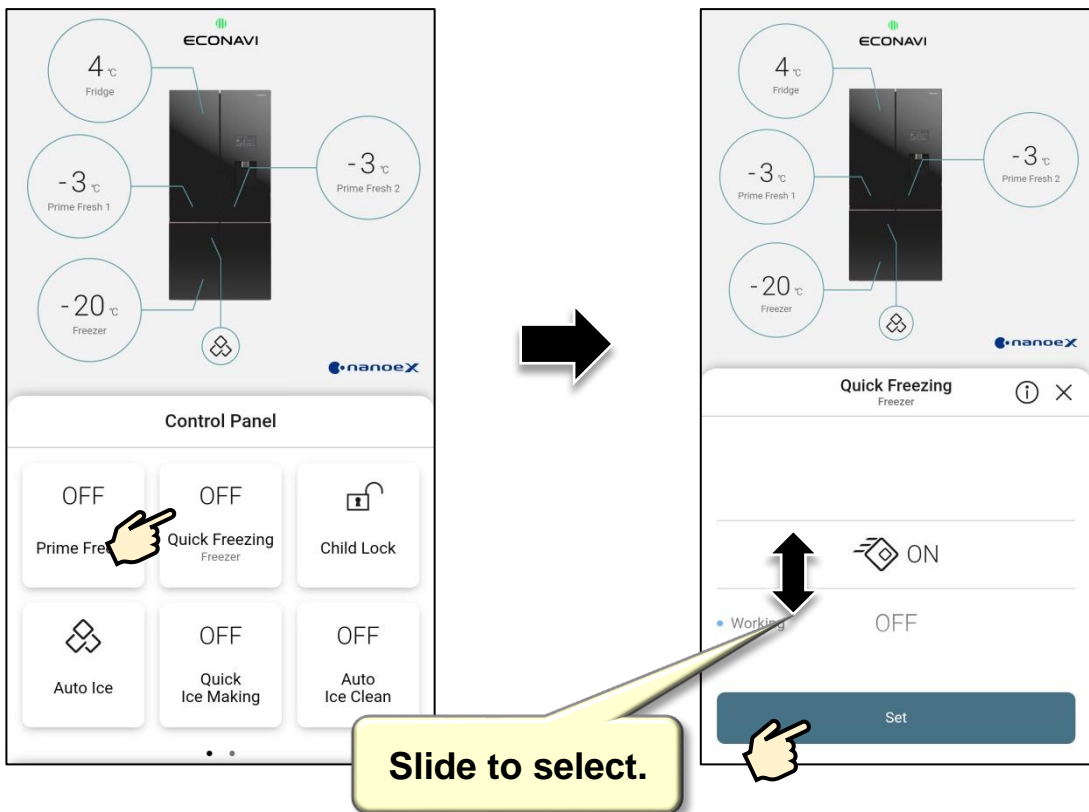
# Fridge Tab (8)

## 2. Control the Modes (Continued)

### Quick Freezing Mode

① On Control Panel, select “Quick Freezing” mode.

② Select “On” to start the mode. Select “Off” to stop the mode.



③ Tap “Set” to confirm.

Auto Ice, Quick Ice Making, Child Lock, and Prime Fresh+ Modes

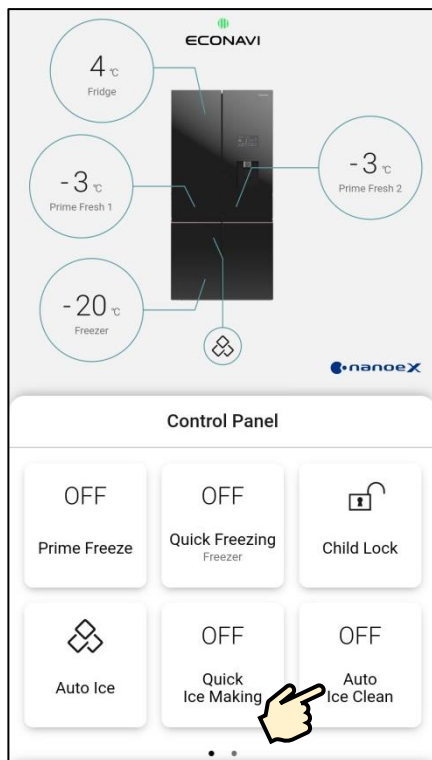
The settings are similar to Quick Freezing mode.

# Fridge Tab (9)

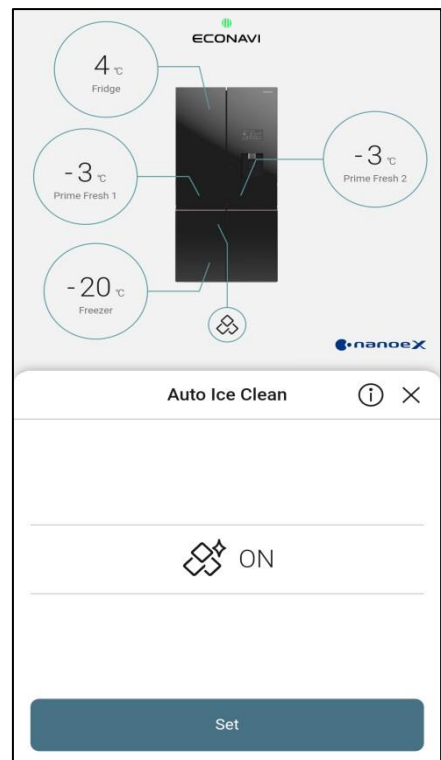
## 2. Control the Modes (Continued)

### Auto Ice Clean Mode

① On Control Panel, select “Auto Ice Clean”.



② Select “On” to start the mode.




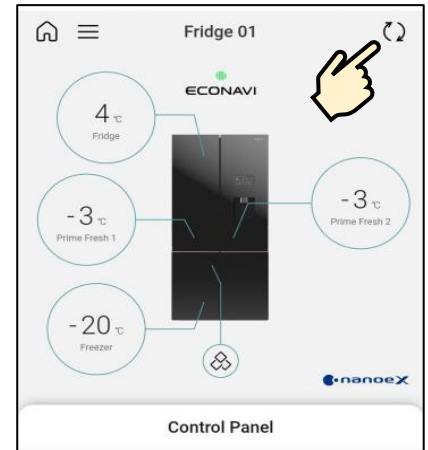
③ Tap “Set” to confirm.

# Fridge Tab (10)

## Attention

### ■ The status of the refrigerator displayed on the application is not synchronized with the actual refrigerator sometimes.

- It takes time for the application to update the status of the refrigerator.
- Please tap to  to update the status of the refrigerator on the application.



### ■ Auto Ice Clean mode

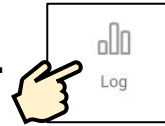
- Before start Auto Ice Clean mode, please check the Ice tray to make sure there is no ice left in the tray and check the water tank to make sure there is water in it (since the refrigerator will pump, pour water into the tray to clean the Ice maker).
- During Auto Ice Clean mode, you cannot stop/cancel it.
- During Auto Ice Clean mode, you cannot set the temperature or other functions from the application.

### ■ Temperature Fine Adjustment Mode

- Fine adjustment mode can be set by Operation Panel on the actual refrigerator unit only.
- During Fine adjustment mode, the application displays the default temperature (Fridge: 4°C, Freezer: - 20°C). If you change Fridge or Freezer temperature from the application, the refrigerator will cancel Fine adjustment mode and return normal.

# Log Tab (1)

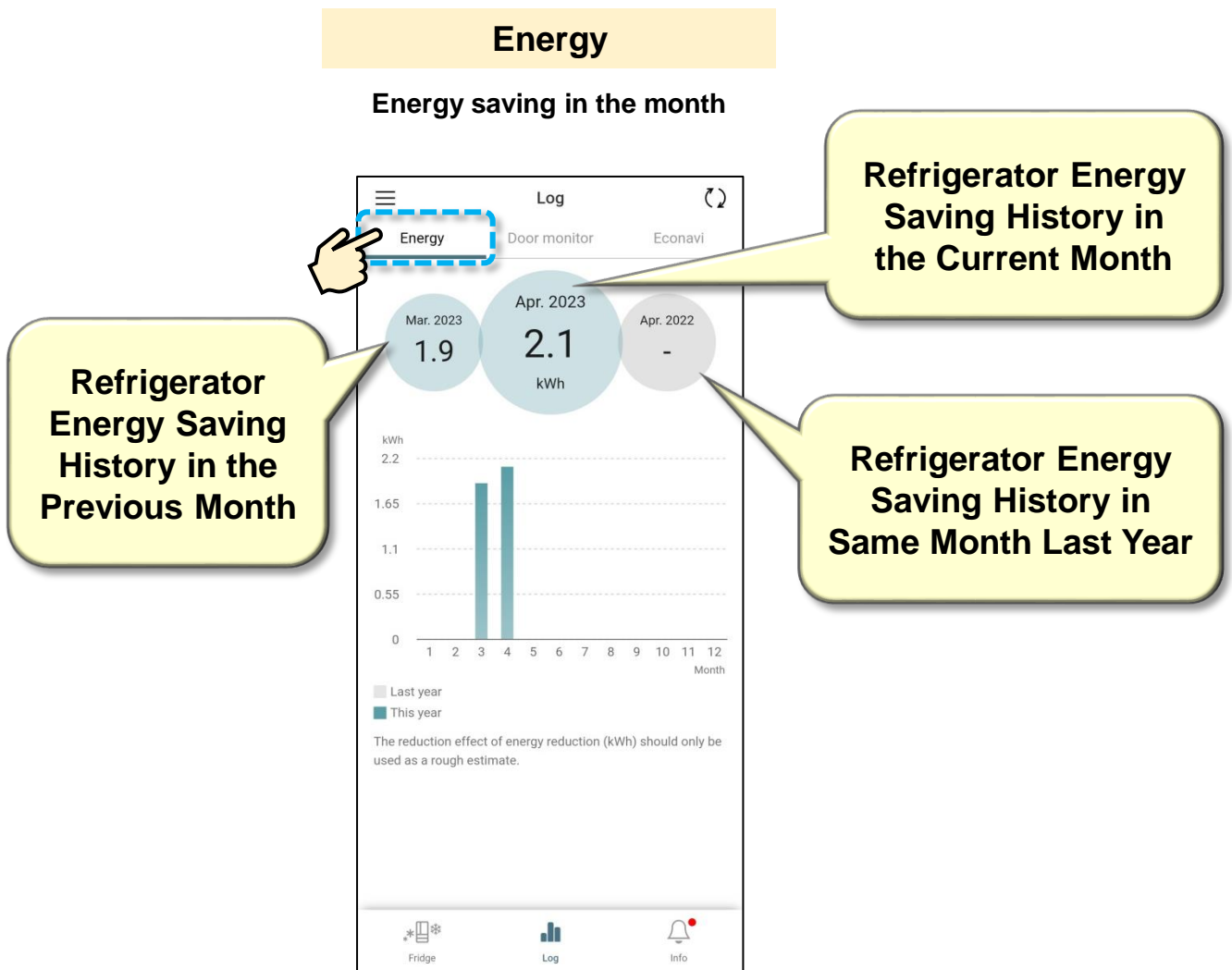
On the Main Screen, select “Log”.



The Log tab shows the refrigerator's energy-saving history, monitoring the opening/closing of the door, and the ECONAVI mode.


## ■ Energy

You can check your refrigerator's energy saving history for current month , previous month and same month last year.



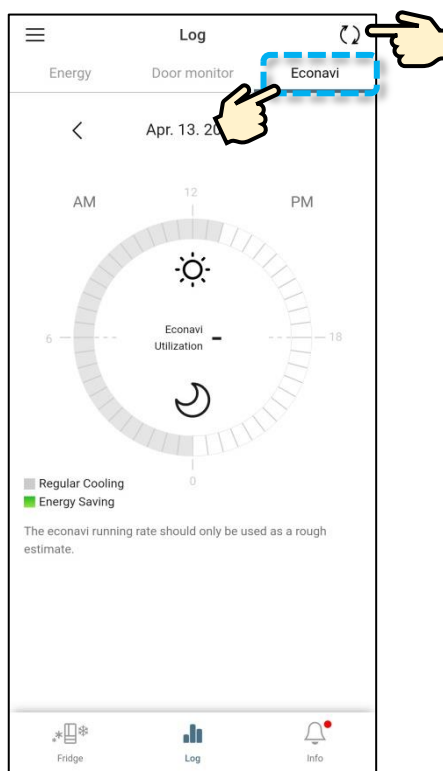
# Log Tab (2)

## ■ ECONAVI

- ECONAVI energy saving status of the refrigerator is recorded daily.
- You can check the ECONAVI status of the refrigerator for up to 7 days.
- The ECONAVI status displayed on the application is not synchronized with the actual status sometimes. Please tap  to update the status of the refrigerator again.
- ECONAVI states are represented by 3 colors: gray, green and white.
  - Gray : The refrigerator operates regularly.
  - Green : The refrigerator operates energy saving mode by ECONAVI.
  - White : No data from the refrigerator.


## ECONAVI

### ECONAVI status displayed by day



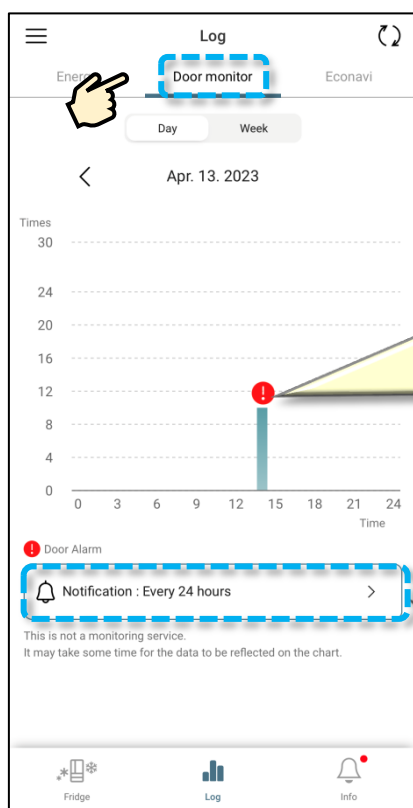
# Log Tab (3)

## ■ Door Monitor

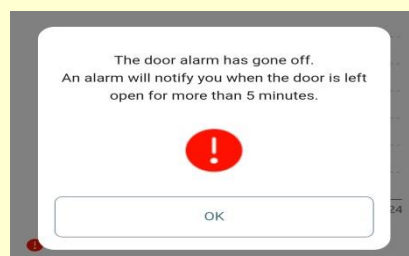
- You can monitor the daily count of refrigerator door openings.
- The application displays the count of door openings for each hour in the screen of the day.
- The application displays the count of door openings for each day in the screen of the week.
- If the refrigerator door is opened for more than 5 minutes, a door alarm icon  is shown.
- You can set to receive notifications if the refrigerator door is not opened / closed for a selected time.

### Door monitor

#### Daily/Weekly Refrigerator Door Opening/Closing Status



**Tap the exclamation mark to show the details.**



**Tap here to change the frequency of notification if the refrigerator door is not opened / closed.**

# Log Tab (4)

## ■ Door Monitor (Continued)

### Attention

Monitor only the door opening / closing of the Fridge compartment and the Freezer compartment, not the Prime Fresh compartment.

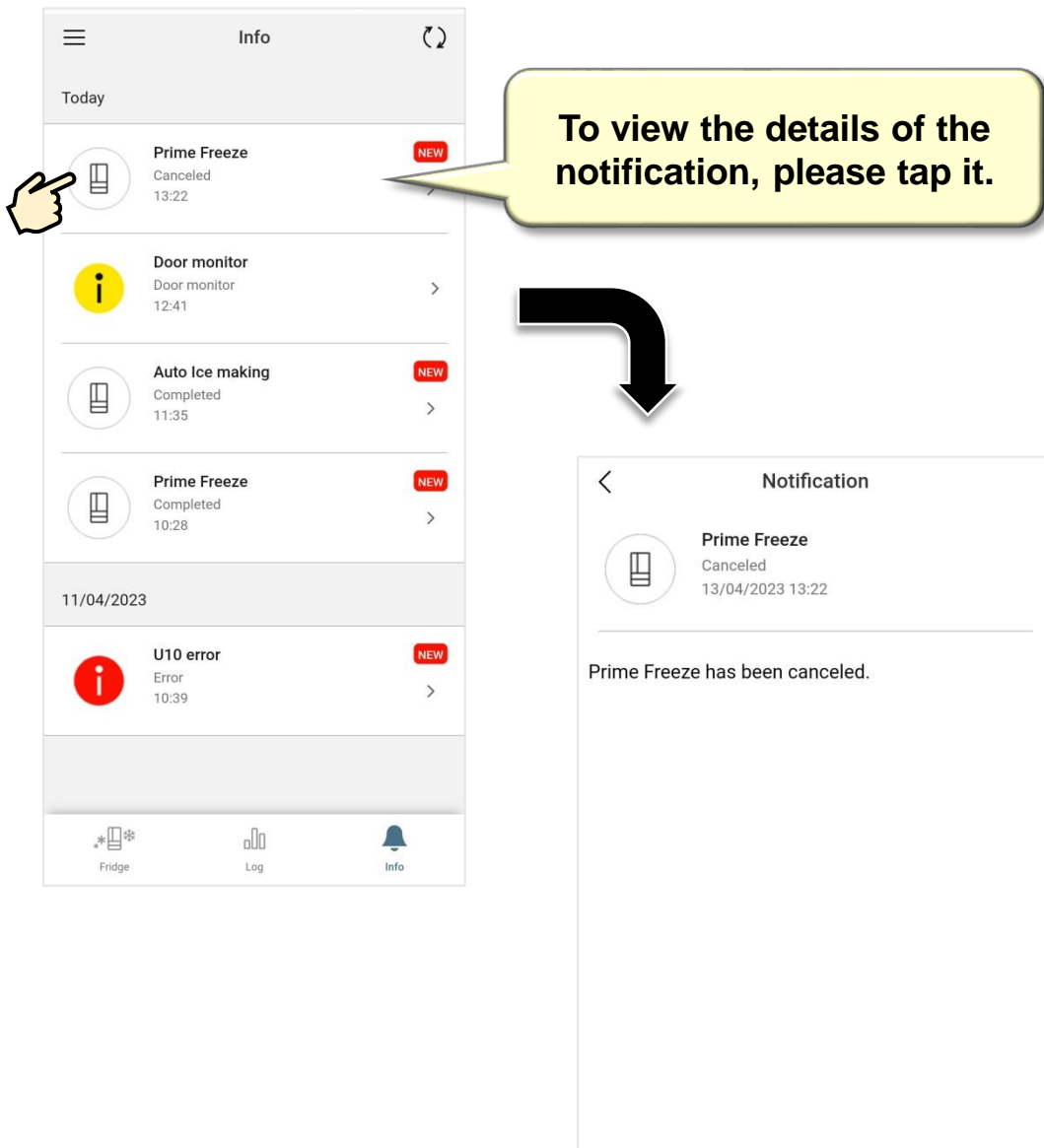


# Information Tab

On the Main Screen, select “Info”.

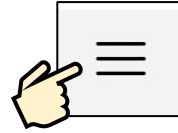


On the Information Tab screen, you can check the device's notifications. (Notifications are displayed here, whether you have them enabled in Notification settings under General settings (Page 9) or not.)

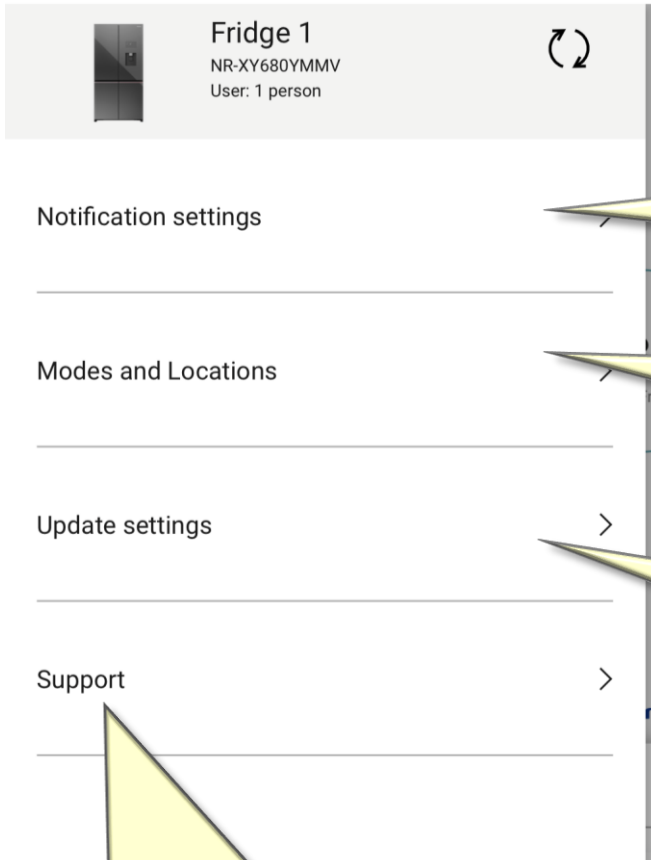


# Settings (1)

On the Main Screen, select “Settings”.



You can set items as below:

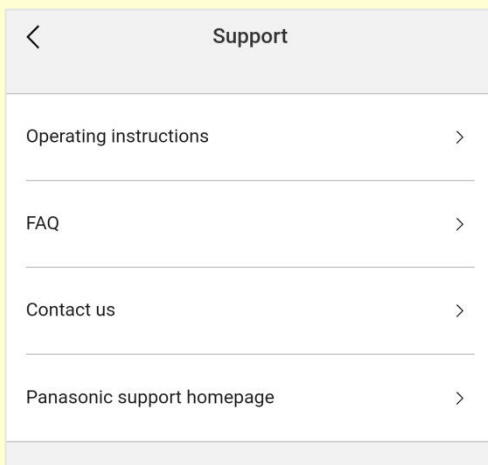


Select the item to receive notifications (Page 27).

Set the modes and locations (Pages 29~32).

Instructions for some common cases (Page 33).

**Support when you have problems or questions.**



# Settings (2)

## ■ Notification Settings

You can set notifications which you want to receive.

The screenshot shows the 'Notification settings' screen with a back arrow at the top left. The settings list includes:

- Error**: Toggle is ON. Callout: **Set notifications when the refrigerator has an error.**
- Prime Freeze**: Toggle is ON. Callout: **Set notifications of Prime Freeze.**
- Auto Ice making**: Toggle is OFF. Callout: **Set notifications of finishing Auto Ice.**
- Door monitor**: Toggle is ON. Callout: **Set notifications when the door is not opened for a selected time.**

At the bottom, a note states: 'In the Leaving Home mode, Shopping mode, important notices and energy, you cannot select ON / OFF for Push notification.'

### Attention

- **Some notifications will be sent automatically from the server to your smartphone after you set notifications and start the mode.**

For example:

- If you set notifications of Auto Ice mode, an “Ice making completed” notification will be sent to your smartphone automatically after the designated time passes even though there is no water in the Ice maker and ice is not made.
- If you set notifications of Door monitor mode and the refrigerator is plugged off, you may receive notification that “There is no door operation (open/close) in the set time”.

# Settings (2)

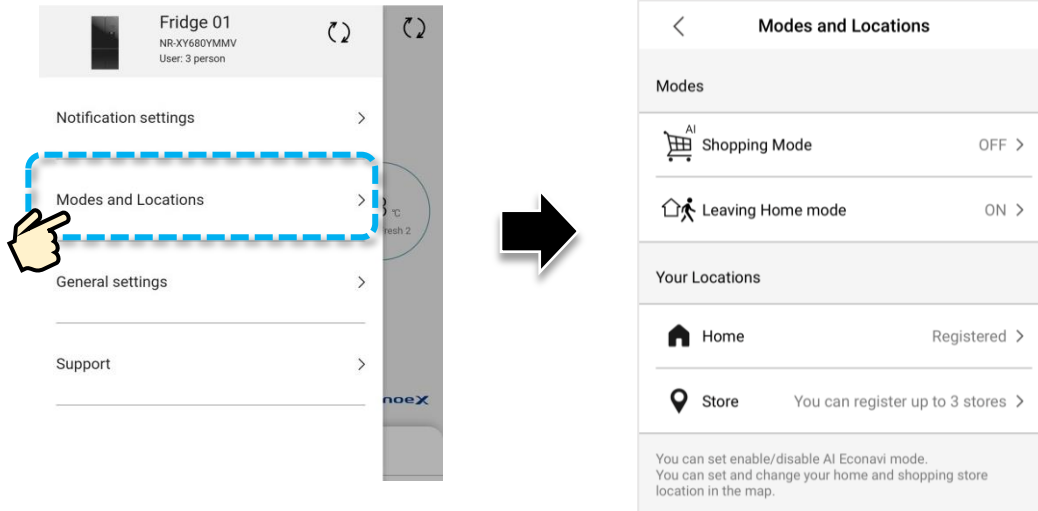
## ■ Notification Settings (Continued)

### Attention

- If you set Leaving Home mode or Shopping mode ON, the notifications of them will be automatically turned ON as well. You cannot set them OFF.
- Important notices such as application update or energy saving report are automatically sent to your smartphone. You cannot set them OFF.

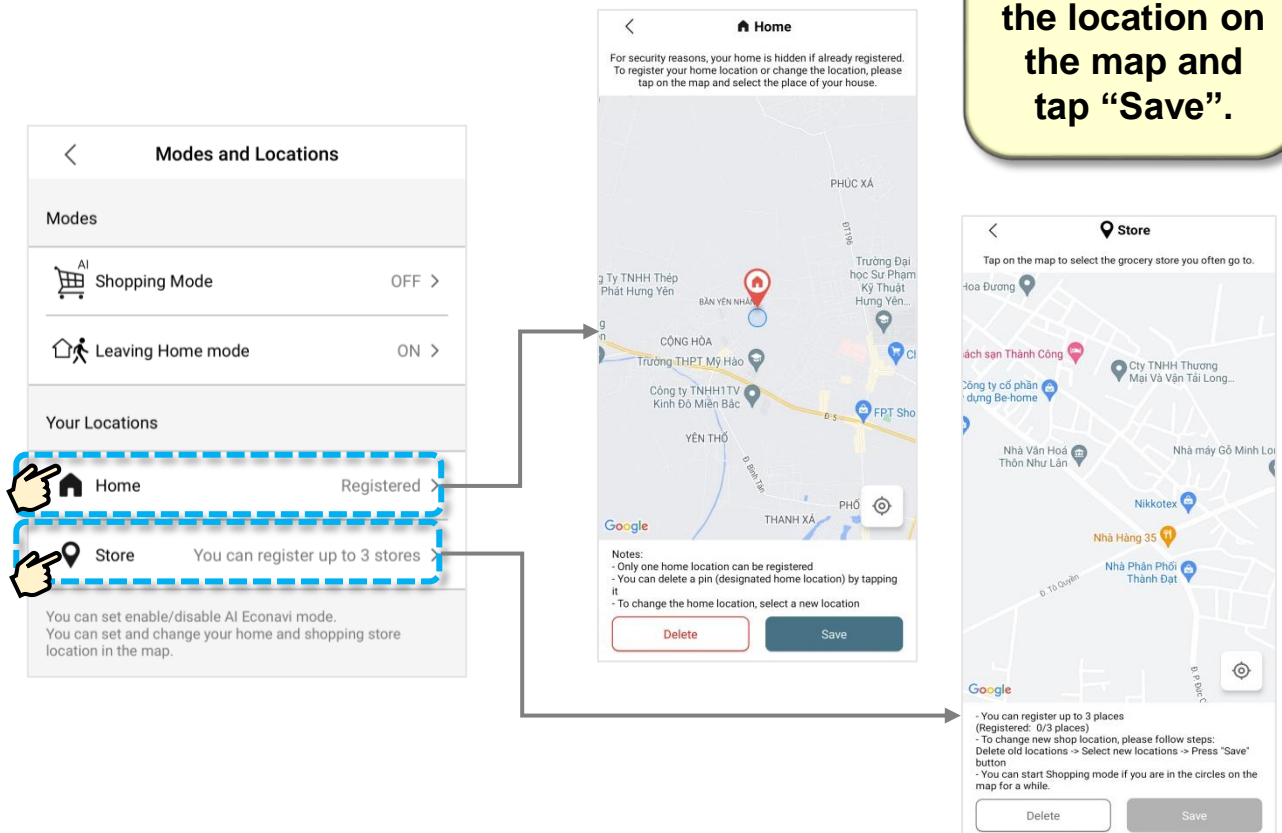
# Settings (3)

## ■ Modes and Locations



To use Shopping mode and Leaving Home mode, the following initial settings are required:

### ① Set Home location and Store locations.



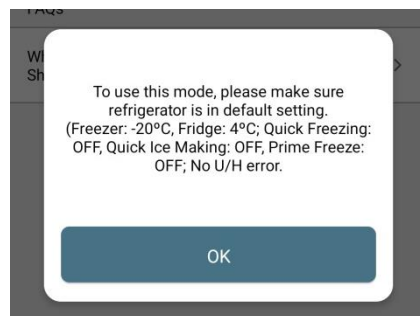
# Settings (4)

## ■ Modes and Locations (Continued)

### ② Make sure the refrigerator is in the default setting.

The default setting of the refrigerator includes all the following elements:

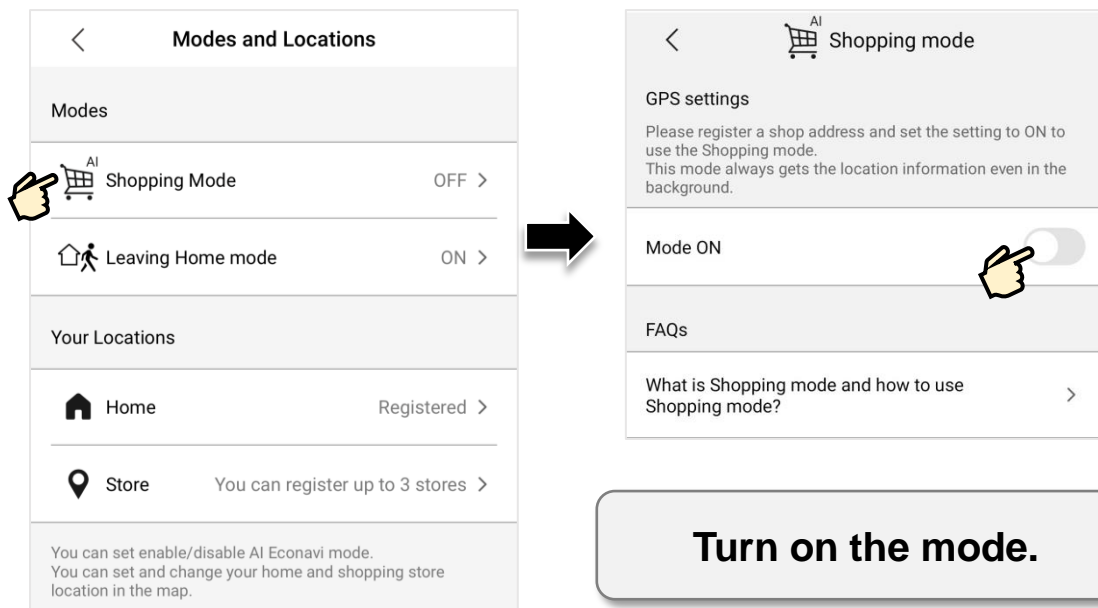
- Freezer temperature: -20°C
- Fridge temperature: 4 °C
- Quick Freezing: Off
- Quick Ice Making: Off
- Prime Freeze: Off
- No U/H error occurs



If the refrigerator is not in the default setting, Shopping mode and Leaving Home mode will automatically turn off.

## Shopping Mode

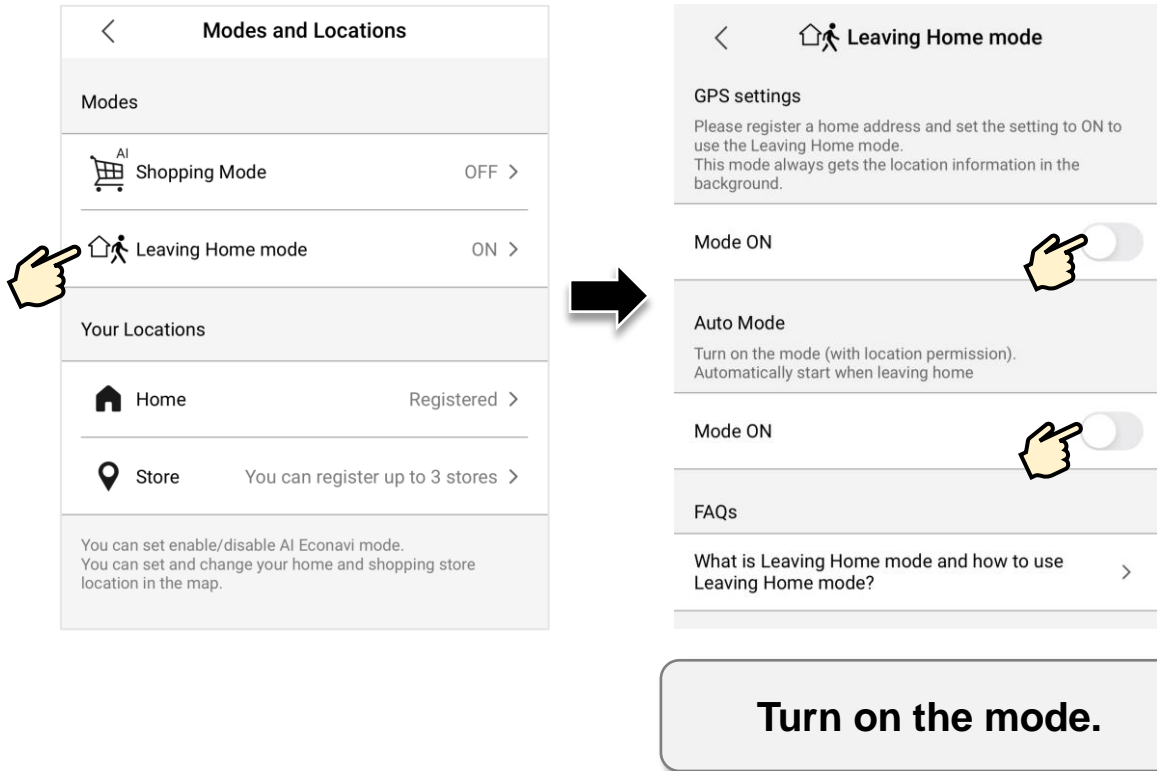
- When Shopping mode is on and you approach the registered stores (enter within a radius of 250 meters from the stores), the application will send a confirmation message to activate the Shopping mode, then please confirm to activate the mode.



# Settings (5)

## ■ Modes and Locations (Continued)

### Leaving Home Mode



- **GPS settings:** When GPS setting in Leaving Home mode is on and you leave home (100 meters away from the registered home location), the application will send a confirmation message to activate the Leaving Home mode, then please confirm to activate the mode.
- **Auto mode:** If you turn on Auto mode, Leaving Home mode will automatically activate when you leave home without your confirmation each time. Auto mode can only be selected after GPS Settings is ON.

# Settings (6)

## Attention

- Leaving Home mode automatically turns off only when you return home at least 15 minutes after leaving home. If you return home less than 15 minutes and you would like to turn off this mode, please set up manually on the application.
- Shopping mode and Leaving Home mode base on your location to determine whether you are leaving Home or going to Store to display the corresponding message. When Shopping mode is active, if Leaving Home mode is activated, Shopping mode will automatically turn off and vice versa.
- If the refrigerator is operated by multiple smartphones, Shopping mode and Leaving Home mode will send notification to each smartphone based on its location.
- If Home and Store are near each other, you may receive a notification to activate Shopping mode while you are at Home, since the radius of Home coincides with the radius of Store.
- Since Shopping mode and Leaving Home mode use GPS signals, the performances of them depend on many factors such as mobile device, geographical location, network status, operating system, etc.

For example:

The response may vary depending on whether you are using an iOS or Android device.

- Notifications may take about 30 minutes to be sent to your smartphone or not be sent in some cases by unexpected troubles.



# Settings (7)

## ■ Update Settings

Update settings
When you change the Wireless LAN router
When you repair the appliance
When you change the smartphone
When the owner of the appliance changes

Connect to new wireless LAN router (Wi-Fi router) or reconnect your LAN router which router name change or password change.

Re-establish the original connection after repairing the device.

Instructions for downloading the Panasonic SmartApp+ application when you change to a new smartphone.

### Setting instructions when the owner of the device changes.

wireless LAN initialization

Turn on refrigerator and start initial connection.

- 1 Please hold the **REMOTE** button on the control panel for 3s.
- 2 Display show: C1 → C2.
- 3 Press and hold **PRIME FREEZE SW** + **FREEZER SW** button 3s in wireless LAN connection mode.

When press long time, 7-segment display will be show 'In'  
If display keeps showing C1, please try wireless LAN initialization again.

Continue



Setting preparation

1 Preparation 2 Wireless LAN 3 Register 4 Complete

Connect your refrigerator to 2.4GHz wireless LAN

You will need the password (encryption key) for 2.4GHz of the wireless LAN router, so please make a note of it.

The password of 2.4GHz (encryption key) is wrote on the wireless LAN router device (side, bottom, etc.) or the included card.

Wireless LAN Router

Label

Next

Follow the instructions to delete all accounts connected to the refrigerator in the past.

Set the new owner's connection.

# Troubleshooting

When the device has an error, the application will give an error message, please take the steps below to contact to the Customer Care Center.

