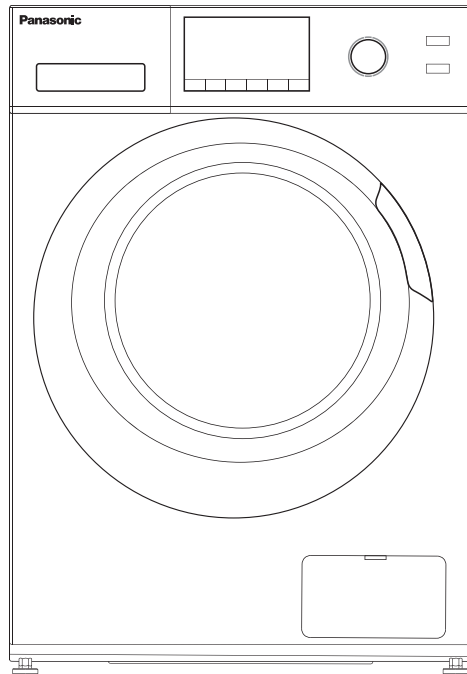


Panasonic®

Operating Instructions WASHING MACHINE

Model no: NA-148MB3*

Thank you very much for purchasing Panasonic Washing Machine



*Picture is only for illustration

* LAE - Silver

* WAE - White

Before operating this unit, please completely read these instructions especially the **Safety Precautions and Important Instructions**.



CONTENTS

Safety Instructions

- Safety Instructions 2

Installation

- Product Description 8
- Installation 9

Operations

- Quick Start 12
- Before Wash..... 13
- Detergent Dispenser 14
- Control Panel 15
- Option..... 16
- Other Functions 17
- Programs..... 19
- Wash Program Table 20

Maintenance

- Clean And Care 21
- Troubleshooting 24
- Technical Specifications 25

SAFETY INSTRUCTIONS

■ Safety Instructions

- This appliance is not intended for use by persons(including children) with reduced physical,sensory or mental capabilities or lack of experience and knowledge unless they have been given supervision or instruction concerning use of the appliance by a person responsible for their safety.
- Children should be supervised to ensure that they do not play with the appliance.
- If the power cord is damaged, it must be replaced by the manufacturer, its service agent or similarly qualified persons in order to avoid a hazard.
- Should use the new water inlet hose set which is supplied with product. Don't reuse old hose set.
- The openings must not be obstructed by a carpet.
- This appliance is intended to be used in household and similar applications such as:
 - staff kitchen areas in shops, offices and other working environments;
 - farm houses;
 - by clients in hotels, motels and other residential type environments;
 - bed and breakfast type environments;
 - areas for communal use in blocks of flats or in launderettes.

SAFETY INSTRUCTIONS

■ Safety Instructions

For your safety, the information in this manual must be followed to minimize the risk of fire or explosion, electric shock, or to prevent property damage, personal injury or loss of life.

Explanation of symbols:

Warning!

This combination of symbol and signal word indicates a potentially dangerous situation which may result in death or serious injuries unless it's avoided.

Caution!

This combination of symbol and signal word indicates a potentially dangerous situation which may result in slight or minor injuries or damage to property and the environment.

Note!

This combination of symbol and signal word indicates a potentially dangerous situation which may result in slight or minor injuries.

Warning!

The electric shock!

- If the power cord is damaged, it must be replaced by the manufacturer, its service agent or similarly qualified persons in order to avoid a hazard.

SAFETY INSTRUCTIONS

- The new hose-sets supplied with the appliance are to be used and that old hose-sets should not be reused.
- Before any maintenance , must unplug the appliance first.
- Always unplug the machine and turn off the water supply after use.
- To ensure your safety, power plug must be inserted into an earthed three-pole socket. Check carefully and make sure that your socket is properly and reliably earthed.
- Make sure that the water and electrical devices must be connected by a qualified technician in accordance with the manufacturer's instructions and local safety regulations.
- Plug must be accessible after installation.
- Pull out its plug and cut off water supply after the operation.
- Take care that power voltage and frequency shall be identical to those of washing machine.
- Glass door may be very hot during the operation. Keep kids and pets far away from the machine during the operation.
- Remove all packages and transport bolts before using the appliance. Otherwise, serious damage may result.
- The washing machine with single inlet valve only can be connected to the cold water supply. The product with double inlet valves should be correctly connected to the hot water and cold water supply.

SAFETY INSTRUCTIONS

- Do not use any socket with rated current less than that of appliance. Never pull out power plug with wet hand.

Risk to children!

- This appliance is not intended for use by persons (including children) with reduced physical, sensory or mental capabilities or lack of experience and knowledge unless they have been given supervision or instruction concerning use of the appliance by a person responsible for their safety.
- Children of less than 3 years should be supervised to ensure that they do not play with appliance.
- Animals and children may climb into the machine. Check the machine before every operation.
- Kids should be supervised that they do not play with the appliance.

Risk of explosion!

- Do not wash or dry articles that have been cleaned in, washed in, soaked in, or dabbed with combustible or explosive substances(such as wax, oil, paint, gasoline, degreasers, dry-cleaning solvents, kerosene, etc.) This may result in fire or explosion.
- Before hand thoroughly rinse items of washing by hand.



Installing the product!

- This washing machine is for indoor use only.

SAFETY INSTRUCTIONS

- It isn't intended to be built-in using.
- The openings must not be obstructed by a carpet.
- Washing machine shall not be installed in bath room or very wet rooms as well as in the rooms with explosive or caustic gases.
- Remove all packages and transport bolts before using the appliance. Otherwise, serious damage may result.
- The washing machine with single inlet valve only can be connected to the cold water supply. The product with double inlet valves should be correctly connected to the hot water and cold water supply.
- Plug must be accessible after installation.

Risk of damaging appliance!

- Your product is only for home use and is only designed for the textiles suitable for machine washing.
- Do not climb up and sit on top cover of the machine.
- Do not lean against machine door.
- Cautions during Handling Machine:
 - 1.Transport bolts shall be reinstalled to the machine by a specialized person.
 - 2.The accumulated water shall be drained out of the machine.
 - 3.Handle the machine carefully. Never hold each protruded part on the machine while lifting. Machine door can not be used as the handle during the conveyance.
 - 4.This appliance is heavy. Transport with care.
 - 5.A precaution indicates that the hands shall not be inserted into running water-extracting tub.

SAFETY INSTRUCTIONS

6.A precaution indicates that the appliance shall not be installed at a humid place.

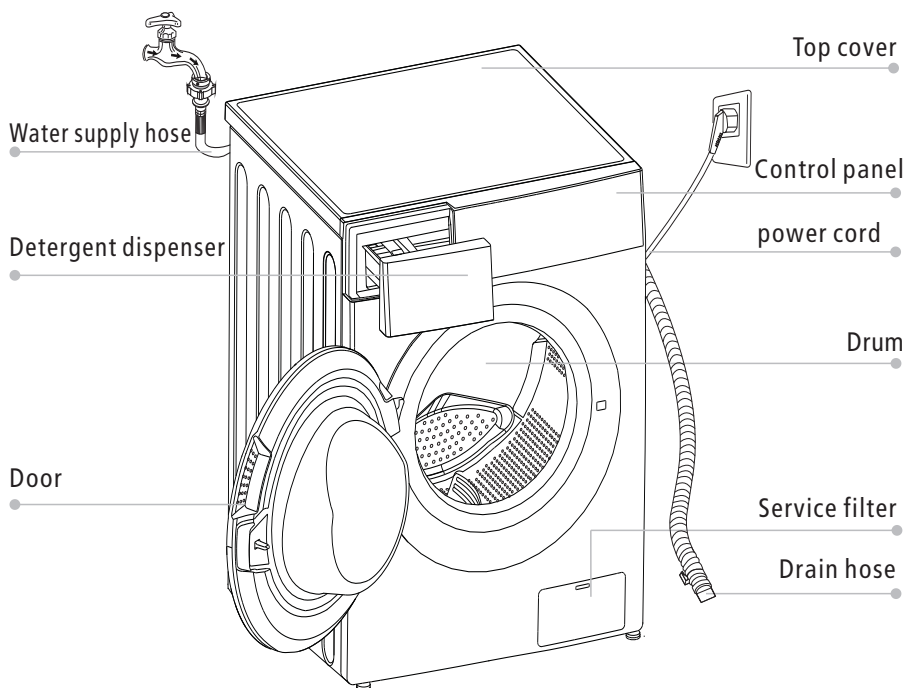
- Please do not close the door with excessive forces. If it is found difficult to close the door, please check if the clothes are put in or distributed well.
- It is forbidden to wash carpets.

Operating the appliance!

- Before washing the clothes at first time, the product shall be operated in one round of the whole procedures without the clothes inside.
- Flammable and explosive or toxic solvents are forbidden. Gasoline and alcohol etc. shall not be used as detergents. Please only select the detergents suitable for machine washing, especially for drum.
- Make sure that all pockets are emptied. Sharp and rigid items such as coin, brooch, nail, screw or stone etc. may cause serious damages to this machine.
- Please check whether the water inside the drum has been drained before opening its door. Please do not open the door if there is any water visible.
- Be careful of burning when the product drains hot washing water.
- Never refill the water by hand during washing.
- After the program is completed, Please wait for two minutes to open the door.

INSTALLATION

■ Product Description



Note!

- The product line chart is for reference only, please refer to real product as standard.

Accessories



Transport
hole plug



Supply hose
cold water



Screws



Rat resistance panel
with sticky tape



Owner's manual



Outlet Hose Support

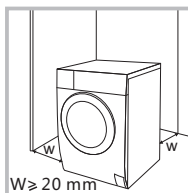
INSTALLATION

■ Installation

Installation area

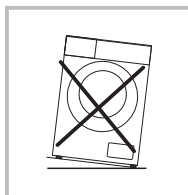
⚠ Warning!

- Stability is important to prevent the product from vibration!
- Make sure that the product should not stand on the power cord.



Before installing the machine, the location characterized as follows shall be selected:

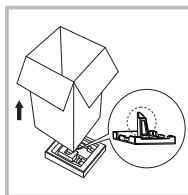
1. Rigid, dry, and level surface
2. Avoid direct sunlight
3. Sufficient ventilation
4. Room temperature is above 0°C
5. Keep far away from the heat resources such as coal or gas.



Unpacking the washing machine

⚠ Warning!

- Packaging material (e.g. Films, Styrofoam) can be dangerous for children.
- There is a risk of suffocation ! Keep all packaging well away from children.



1. Remove the carton box and styrofoam packing.
2. Lift the washing machine and remove the base packing. Make sure the small triangle foam is removed with the bottom one together. If not, lay the unit down with side surface, then remove the small foam from the unit bottom manually.
3. Remove the tape securing the power cord and drain hose.
4. Remove the inlet hose from the drum.

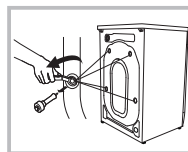
Remove transport bolts

⚠ Warning!

- You must remove the transport bolts from the backside before using the product.
- If the bolts are not removed they may cause heavy vibration, noise and malfunction.

Please take the following steps to remove the bolts:

1. Loosen 4 bolts with spanner and then remove them.
2. Stop the holes with transport hole plugs.
3. Keep the transport bolts properly for future use.



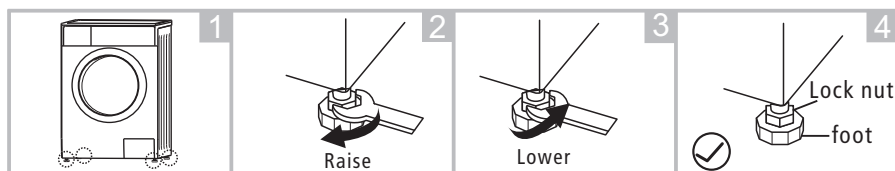
INSTALLATION

Levelling the washing machine

⚠ Warning!

- The lock nuts on all four feet must be screwed tightly against the housing.

1. Check if the legs are closely attached to the cabinet. If not, please turn them to their original positions and tighten the nuts.
2. Loosen the lock nut turn the feet until it closely contacts with the floor.
3. Adjust the legs and lock them with a spanner, make sure the machine is steady.



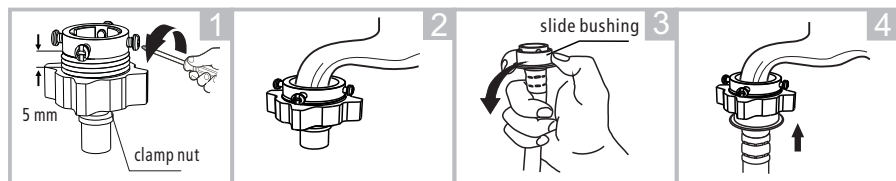
Connect water supply hose

⚠ Warning!

- To prevent leakage or water damage, follow the instructions in this chapter.
- Do not twist, crush, modify or damage the water inlet hose.

Connect the inlet pipe as indicated, There are two ways to connect the inlet pipe.

1. Connection between ordinary tap and inlet hose.



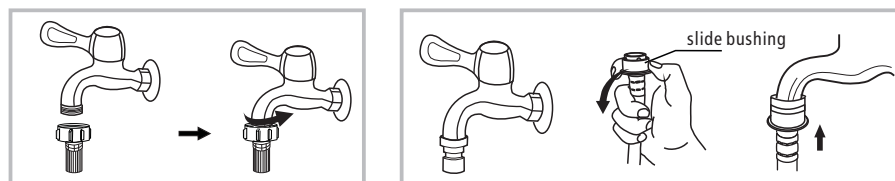
Loosen clamp nut and four bolts

Tighten clamp nut after inserting it in the tap

Press slide bushing, insert inlet hose into connecting base

Connection finished

2. Connection between screw tap and inlet hose.

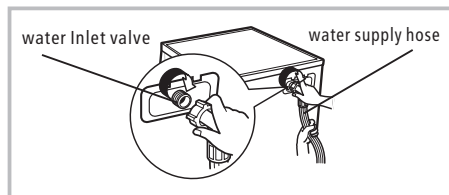


Tap with threads and inlet hose

Special tap for washing machine

INSTALLATION

Connect the other end of inlet pipe to the inlet valve at the backside of product and fasten the pipe tightly clockwise.



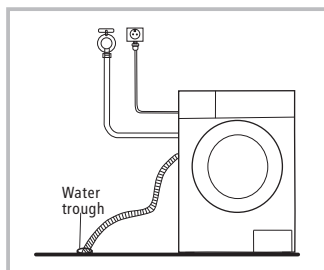
Drain Hose

⚠ Warning!

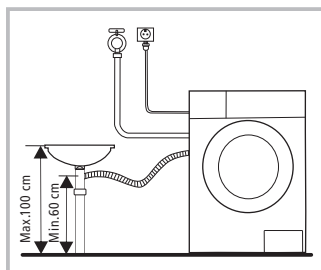
- Do not twist, extend the drain hose.
- Position drain hose properly, otherwise damage might result in water leakage.

There are two ways to place the end of drain hose:

1. Put it into the water trough.

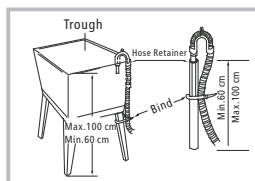
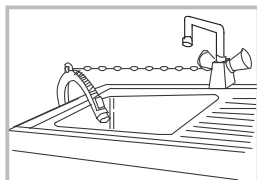


2. Connect it to the branch drain pipe of the trough.



📌 Note!

- If the machine has drain hose support, please install it like the following .



⚠ Warning!

- When installing drain hose, fix it properly with a rope.
- If drain hose is too long, do not force it into washing machine as it will cause abnormal noises.

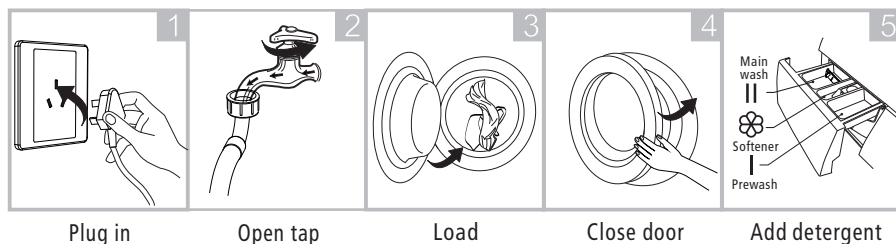
OPERATIONS

■ Quick Start

⚠ Caution!

- Before washing, please make sure it's installed properly.
- Before washing for the first time, the washing machine shall be operated once in any program without the laundry load.

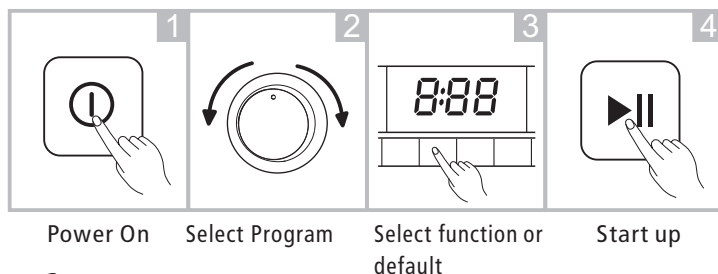
1. Before Wash



📌 Note!

- Detergent in "case I" is added only for programs with pre-wash cycle.

2. Washing



📌 Note!

- If default is selected, step 3 can be skipped.

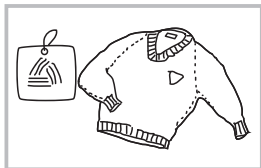
3. After Washing

Buzzer beep or "End" on display.

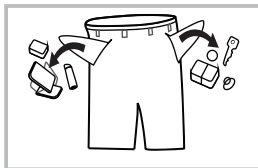
OPERATIONS

■ Before Wash

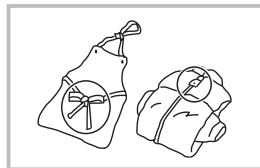
- The working condition of the washer should be (0-40)°C. If used under 0°C, the inlet valve and draining system may damage. If the machine is placed under condition of 0°C or less, then it should be transferred to normal ambient temperature to ensure the water supply hose and drain hose are not frozen before use.
- Please check the labels and the explanation of using detergent before wash. Use non-foaming or less-foaming detergent suitable for machine wash.



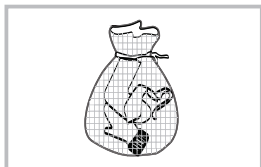
Check the label



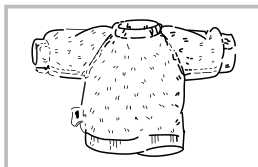
Take out the items out of the pockets



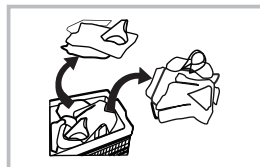
Knot the long strips, zip or button



Put small clothes like socks, into the pillow slip



Turn easy-pilling and long-pile fabric inside out



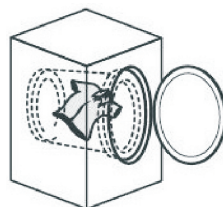
Separate clothes with different textures

⚠ Warning!

- When washing a single cloth or very less load, the machine raise an alarm like it won't stop because of unbalance of the load. It is advised to add more load or manually distribute the load after pausing the machine.
- Don't wash the clothes touched with kerosene, gasoline, alcohol and other flammable materials.

⚠ Warning!

Before closing the door, make sure that all laundries have been put into the inner drum as shown in the figure to prevent the laundries from being caught by the drum, which may damage the laundries or the gasket.

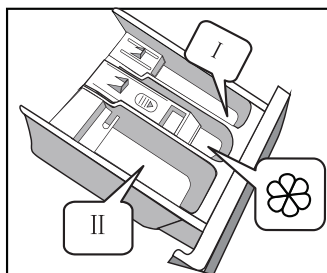


OPERATIONS

■ Detergent Dispenser

- I Pre wash detergent
- II Main wash detergent
- ☼ Softener

1. Pull out the drawer.
2. Fill pre-detergent into Case I (when necessary).
3. Fill detergent into Case II.
4. Fill softener into Case ☼ (when necessary).



⚠ Caution!

- Detergent only need to be added into "Case I " after select Pre Wash function.

Program	I	II	☼	Program	I	II	☼
Cotton	○	●	○	Rinse&Spin			○
Synthetic	○	●	○	Wool		●	○
Baby Care	○	●	○	Gentle Hand Wash		●	○
Jeans	○	●	○	Rapid 15'		●	○
Mix	○	●	○	Sports Wear	○	●	○
Colors		●	○	Active Speed	○	●	○
Drain Only				Cotton Eco		●	○
Spin Only							

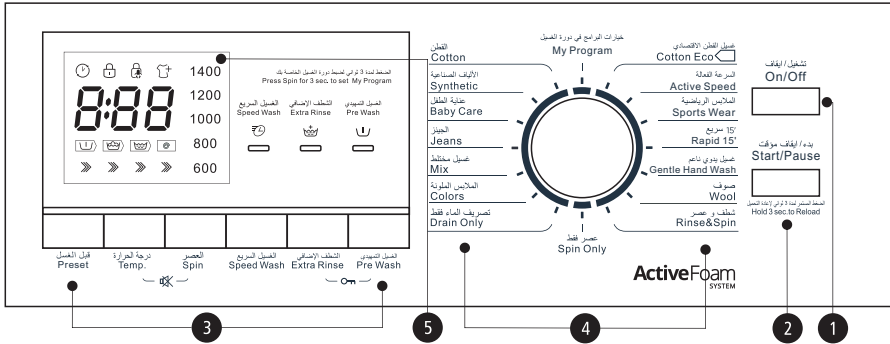
● Means must ○ Means optional

📌 Note!

- Detergent or additives which are lumpy or sticky, before they are poured into the detergent box, it is suggested to use some water for dilution to prevent the inlet of detergent box from being blocked and overflowing while filling water.
- Please choose suitable type of detergent for the various washing temperature to get the best washing performance with less water and energy consumption.

OPERATIONS

Control Panel



Note!

- The chart is for reference only, Please refer to real product as standard.

1 On/Off

Product can be switched on or off.

2 Start/Pause

Press the button to start or pause the washing cycle.

3 Option

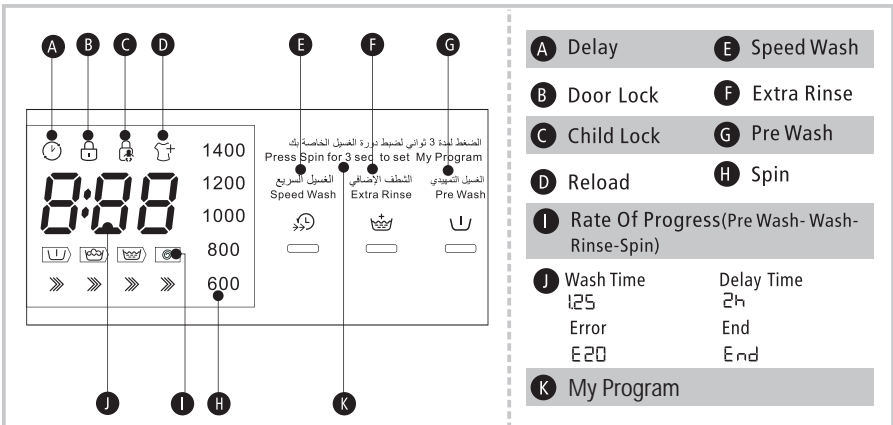
This allows you to select an additional function and will light when selected.

4 Programs

Available according to the laundry type.

5 Display

The display shows the settings, estimated time remaining, options, and status messages for your washer. The display will remain on through the cycle.



OPERATIONS

■ Option



Pre Wash

The Prewash function can get an extra wash before main wash, it is suitable for washing the dust attached to surface of the clothes; You need to put detergent into the Case (I) when it is selected.



Extra Rinse

The laundry will undergo extra rinse after it is selected.



Speed Wash

The function can decrease the washing time.



Preset

Set the Preset function:

1. Select a program
2. Press the Preset button to choose the time (the delaying time is 0-24 H.)
3. Press [Start/Pause] to commence the Preset operation



On/Off



Choose the Program



Setting time



Start

Cancel the Preset function:

Press the [Preset] button until the display be 0H. It should be pressed before starting the program. If the program already started, should press the [On/Off] button to reset the program.



Caution!

- If there is any break in the power supply while the machine is operating, a special memory stores the selected program and when the power is restarted, the machine will start automatically from the previous program with the remaining time.

Program	Option				Program	Option			
	Preset	Speed Wash	Extra Rinse	Pre Wash		Preset	Speed Wash	Extra Rinse	Pre Wash
Cotton	○	○	○	○	Rinse&Spin	○		○	
Synthetic	○	○	○	○	Wool	○		○	
Baby Care	○	○	○	○	Gentle Hand Wash	○		○	
Jeans	○	○	○	○	Rapid 15'	○			
Mix	○	○	○	○	Sports Wear	○	○	○	○
Colors	○	○	○		Active Speed	○	○	○	○
Drain Only	○				Cotton Eco	○			
Spin Only	○								

○ Means optional

OPERATIONS

■ Other Functions



Reload

This feature can be used during the wash process to add extra clothes. The reloading will not work when the drum is in rotation and water level is high with high temperature. In this case, the door cannot be opened as it is unsafe state. Press [Start/Pause] for 3 sec. to reload the clothes in the mid of program. Please follow the steps as below:

- 1.Wait until the drum stops rotation.
- 2.The door lock is unlocked.
- 3.Close the door when the clothes are reloaded and press the [Start/Pause] button.



Press [Start/Pause] 3sec.

Reload the clothes

Start



Caution!

- Don't use the Reload function when the water level is over the edge of the inner tub or the temperature is higher.



Child Lock

To avoid misuse by children.



On/Off

Start

Press [Function] and [Select]
3 sec. till buzzer beep.



Caution!

- Press the two buttons 3 sec. again to deactivate "Child Lock".
- The "Child Lock" will lock all buttons except "On/Off" button.
- The "Child Lock" will remain effective when supply is resumed after power cut.

My Program

This program memorizes the previous washing program used by the customer. When knob is turned to My Program the machine displays last run program. The default program is Cotton. Press [Spin] button for 3 sec. to memorize the running program.

Temp.

Temp.

Press the button to regulate the temperature (Cold, 20°C, 30°C, 40°C, 60°C, 90°C)

OPERATIONS



Spin
Press the button to change the spin speed.
1400: 0-600-800-1000-1200-1400

Program	Default Speed(rpm)	Program	Default Speed(rpm)
	1400		1400
Cotton	1400	Rinse&Spin	1200
Synthetic	1400	Wool	600
Baby Care	800	Gentle Hand Wash	600
Jeans	800	Rapid 15'	800
Mix	800	Sports Wear	800
Colors	1000	Active Speed	800
Drain Only	—	Cotton Eco	1400
Spin Only	1200		



Caution!

- When the lights of spin speed are off means the spin speed is 0.



Mute the buzzer



On/Off

Start

Press the [Temp.]&[Dry] button for 3sec.

To mute the buzzer sound press Temp. button for 3 sec.

To activate the buzzer sound, press the Temp. button for 3 sec. again.



Caution!

- After the buzzer is mute, the sound of button and the operation completion will not be heard.

OPERATIONS

■ Programs

Program are available according to the laundry type.

Program	
Cotton	For hard wearing textiles or heat resistant textiles made of cotton or linen.
Synthetic	To wash synthetic articles, for example: shirts, coats, blending. While washing the knitting textiles, detergent quantity shall be reduced due to its loose string construction and easily forming bubbles.
Baby Care	For washing baby's clothes, it can make the baby's wear cleaner and make the rinse performance better to protect the baby skin.
Jeans	Meant for washing jeans and denims .
Mix	For mixed load consisting of textiles made of cotton and synthetics.
Colors	Washing brightly colored clothes, it can protect the colors better.
Cotton Eco	To increase the washing effects, washing time is increased.
Sports Wear	Washing the activewear.
Rapid 15'	Extra short program, suitable for lightly soiled washing as a small amounts of laundry.
Gentle Hand Wash	For delicate, washable textiles, e.g. made of silk, satin, synthetic fibres or blended fabrics.
Wool	Hand or machine-washable wool or richwool textiles.Especially gentle wash program to prevent shrinkage, longer program pauses (textiles rest in wash liquid).
Spin Only	Extra spin with selectable spin speed.
Rinse & Spin	Extra rinse with spin.
Drain Only	Drain off the water.
Active Speed	When you start this function, it will increase more foam in the bucket, then it will improve the wash performance.

OPERATIONS

■ Wash Program Table

Program	Load(kg)	Temp.(°C)	Time(HH:MM)
	8.0	Default	Default
Cotton	8.0	40	2:40
Synthetic	4.0	40	2:20
Baby Care	8.0	30	1:20
Jeans	8.0	60	1:45
Mix	8.0	40	1:13
Colors	4.0	Cold	1:10
Drain Only	—	—	0:01
Spin Only	8.0	—	0:12
Rinse&Spin	8.0	—	0:20
Wool	2.0	40	1:07
Gentle Hand Wash	2.5	30	0:50
Rapid 15'	2.0	Cold	0:15
Sports Wear	4.0	20	0:45
Active Speed	8.0	40	1:10
Cotton Eco	8.0	60	2:57

- The UAE energy efficiency class is: ★★★★★
Energy test program: Cotton, Speed: the highest speed; Temp.:60 °C; Other as the default.
- For UAE: "Cotton 60 °C" is the standard washing program to which the information in the label and the fiche relates, and they are suitable to clean normally soiled cotton laundry and that they are the most efficient Programs in terms of combined energy and water consumptions for washing that type of cotton laundry, that the actual water temperature may differ from the declared cycle temperature.



Note!

- The parameters in this table are only for user's reference. The actual parameters maybe different with the parameters in above mentioned table.

MAINTENANCE

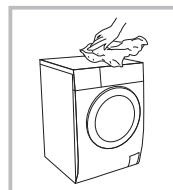
■ Clean And Care

⚠ Warning!

- Before the maintenance, please unplug the machine and close the tap.

Cleaning The Cabinet

Proper maintenance on the washing machine can extend its working life. The surface can be cleaned with diluted non-abrasive neutral detergents when necessary. If there is any water overflow, use the wet cloth to wipe it off immediately. No sharp items are allowed.



📌 Note!

- Formic acid and its diluted solvents or equivalent are forbidden, such as alcohol, solvents or chemical products, etc.

Cleaning The Drum

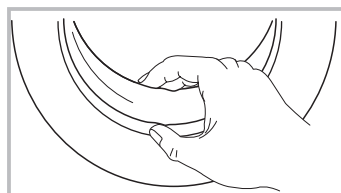
The rusts left inside the drum by the metal articles shall be removed immediately with chlorine-free detergents. Never use steel wool.

📌 Note!

- Don't put laundry in the washing machine during the drum cleaning.

Cleaning The Door Seal And Glass

Wipe the glass and seal after each wash to remove lint and stains. If lint builds up it can cause leaks. Remove any coins, buttons and other objects from the seal after each wash.



MAINTENANCE

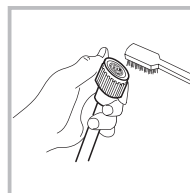
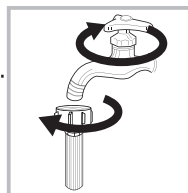
Cleaning The Inlet Filter

Note!

- Inlet filter must be cleaned if there is less water.

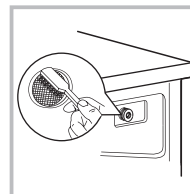
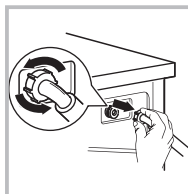
Washing the filter in the tap

- 1.Close the tap.
- 2.Remove the water supply hose from the tap.
- 3.Clean the filter.
- 4.Reconnect the water supply hose.



Washing the filter in washing machine:

- 1.Screw off the inlet pipe from the backside of the machine.
- 2.Pull out the filter with long nose pliers and install it back after being washed.
- 3.Use the brush to clean the filter.
- 4.Reconnect the inlet pipe.

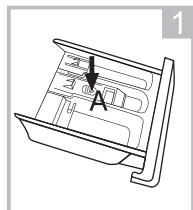


Note!

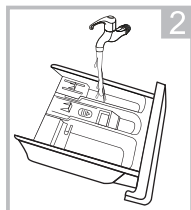
- If the filter is not cleaned by brush , pull it out and wash it separately.
- Reconnect, turn on the tap.

Clean The Detergent Dispenser

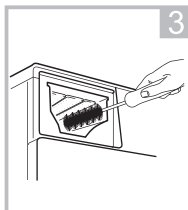
- 1.Press down the arrow location on softener cover inside the dispenser drawer.
- 2.Lift the clip up and take out softener cover and wash all grooves with water.
- 3.Restore the softener cover and push the drawer into position.



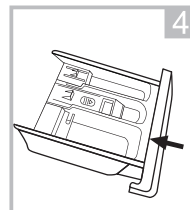
Pull out the dispenser drawer by pressing A



Clean the dispenser drawer under water



Clean inside the recess with an old toothbrush



Insert the dispenser drawer

Note!

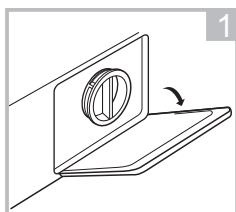
- Do not use alcohol,solvents or chemical products to clean the machine.

MAINTENANCE

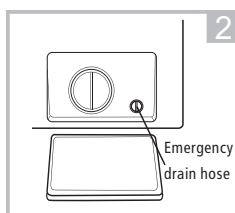
Cleaning The Drain Pump Filter

⚠ Warning!

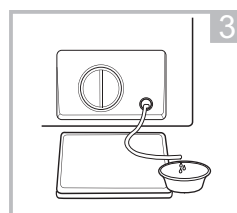
- Be careful of the hot water!
- Allow detergent solution to cool down.
- Unplug the machine to avoid electrical shock before washing.
- Drain pump filter can filter the yarns and small foreign matters from the washing.
- Clean the filter periodically to ensure the normal operation of washing machine.



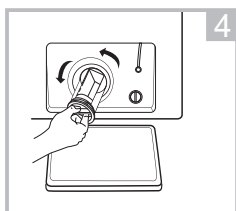
Open the lower cover cap



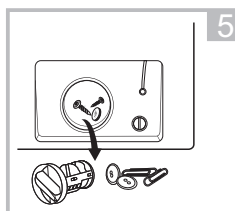
Rotate 90° and pull out the emergency drain hose, and take off the hose cap



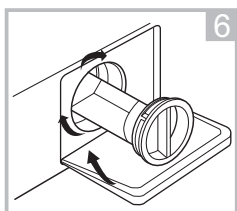
After water runs out, reset the drain hose



Open the filter by turning to the counter clockwise



Remove extraneous matter



Close the lower cover cap

⚠ Caution!

- Make sure that valve cap and emergency drain hose are reinstalled properly, cap plates should be inserted aligning to hole plates otherwise water may leak.
- Some machines don't have emergency drain hose, so step 2 and step 3 can be skipped. Rotate lower cover cap directly to make water run into basin.
- When the appliance is in use and depending on the program selected there can be hot water in the pump. Never remove the pump cover during a wash cycle, always wait until the appliance has finished the cycle and is empty. When replacing the cover, ensure it is securely re-tightened.

MAINTENANCE

■ Troubleshooting

If the machine does not work or it stops during operation, then check as per below instructions and try to resolve without dismantling the machine. If the problem is not resolved contact authorized service centre

Description	Reason	Solution
Washing machine cannot start up	Door is not closed properly	Restart after the door is closed Check if the clothes is stuck
Door can't be opened	Washer's safety protection design is working	Disconnect the power, restart the product
Water leakage	The connection between inlet pipe or outlet hose is not tight	Check and fasten water pipes Clean up outlet hose
Detergent residues in the box	Detergent is dampened or agglomerated	Clean and wipe the detergent box
Indicator or display does not light	Disconnect the power PC board or harness has connection problem	Check if the power is shut down and the power plug is connected correctly
Abnormal noise		Check if the fixing (bolts) have been removed Check it's installed on a solid and level floor

Description	Reason	Solution
E30	Door is not closed properly	Restart after the door is closed Check if the clothes is stuck
E10	Water injecting problem while washing	Check if the water pressure is too low Straighten the water pipe Check if the inlet valve filter is blocked
E21	Overtime water draining	Check if the drain hose is blocked
E12	Water overflow	Restart the washer
EXX	Others	Please try again first, call up Service centre if there are still troubles

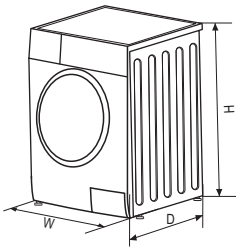
Note!

- After the inspection, if machine does not work properly or displays the error code again then contact the service centre

MAINTENANCE

■ Technical Specifications

Max.Current	10 A
Standard Water Pressure	0.05 MPa~1 MPa



Model	NA-148MB3*
Power Supply	220-240 V,50/60 Hz
Normal Load	8.0 kg
Dimension(W*D*H)	(595*565*850) mm
Weight	68 kg
Rated input Power	2000 W

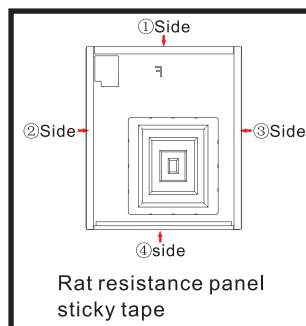
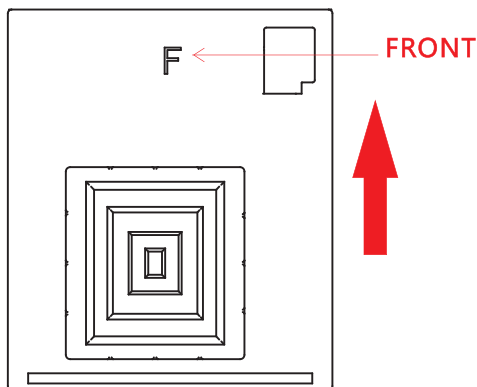
Installation Instruction of Rat Resistance Panel

Before disassembling the shipping bolt, the rat resistance panel should be installed.

Please follow the steps below to install the panel.

1. Incline the machine to a suitable angle for installation. Packaging pad can be used under the machine. When inclining the machine, make sure no damage to it.
2. Remove the tapes pasted on four sides of panel.
3. Adjust the panel as per marked direction to the correct position, make sure the mark "F" leads to the front of the machine.
4. Stick the panel to the machine.
5. Secure the panel with the screws provided in the accessory bag.

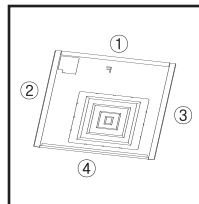
After all the steps above finished, please upright the machine to the correct position.



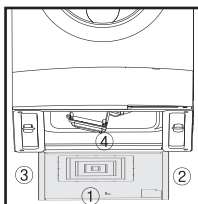
Arrow instruction of the inserting direction



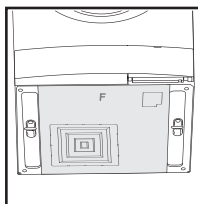
First step



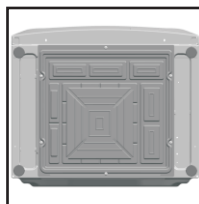
Second step



Third step



Fourth step



Last step
(Secure with screws)

Panasonic Marketing Middle East & Africa FZE
Dubai, UAE
www.panasonic.com

M1020-00
Printed in China