

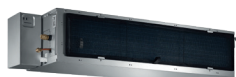


Panasonic
BUSINESS



Every Building Matters

SINGLE-SPLIT PACKAGED AIR CONDITIONERS



R410A











Model Line-up

Panasonic provides ideal solutions for large-capacity air conditioning needs.



Range of Indoor L

Capacity	2.5HP	3.5HP	3.75HP	5HP	6HP
Cassette	 S-24PUY1F5		 S-36PUY1F5	 S-48PUY1F5	
Hide-Away Middle Static Pressure Models	 S-24PFY1F5	 S-30PFY1F5	 S-36PFY1F5		
Hide-Away High Static Pressure Models				 S-48PEY1F5	 S-60PEY1F5

Range of Outdoor L

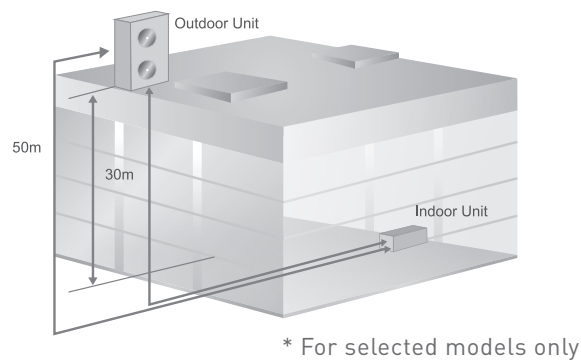
Capacity	2.5HP	3.5HP	3.75HP	5HP	6HP
Cassette Hide-Away Middle / High Static Pressure Models	 U-24PWY1F5	 U-30PWFY1F5	 U-36PWY1F5	 U-48PWEY1F8 U-48PWUY1F8	 U-60PWEY1F8

EVERY BUILDING MATTERS

Panasonic offers a range of turnkey air conditioning solutions for homes, medium-sized buildings such as offices and restaurants. These products offer maximum effectiveness, comply with the strictest environmental standards and meet the most avant-garde construction of our time. Because offering you the best in cooling solution matters.

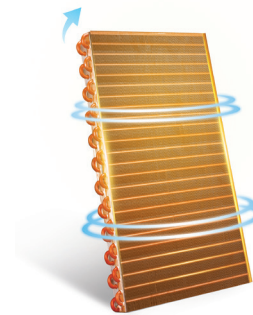
FS Single Split Packaged Air-Conditioner

Increased Piping Length ▶



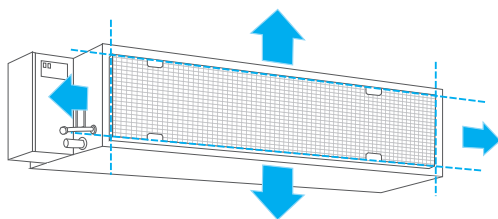
Gold Fin ▶

Unique "Gold" coating on the condenser provides protection against corrosive elements



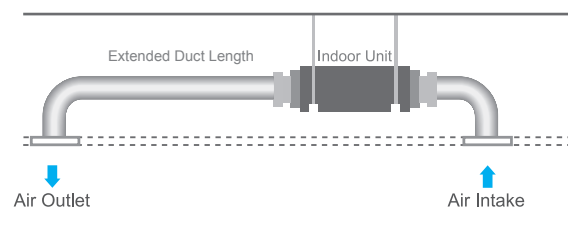
Easy Cleaning Filter ▶

The filter can be easily removed or installed from the bottom for ease of cleaning



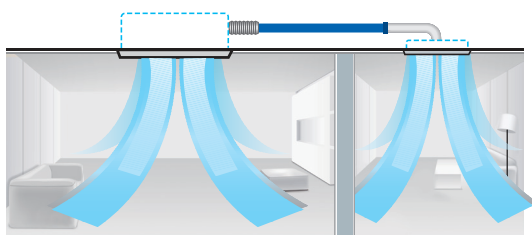
Flexible Ducting ▶

Maximum static pressure of indoor unit is up to 200Pa which allows flexible and long duct runs.



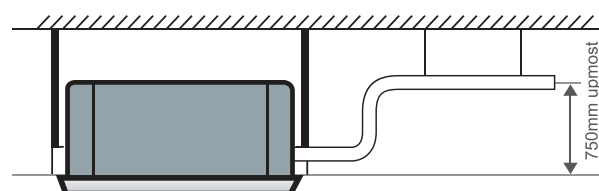
Additional Air Outlet for Cassette Unit ▶

Provision in indoor unit to connect duct for cooling nearby area

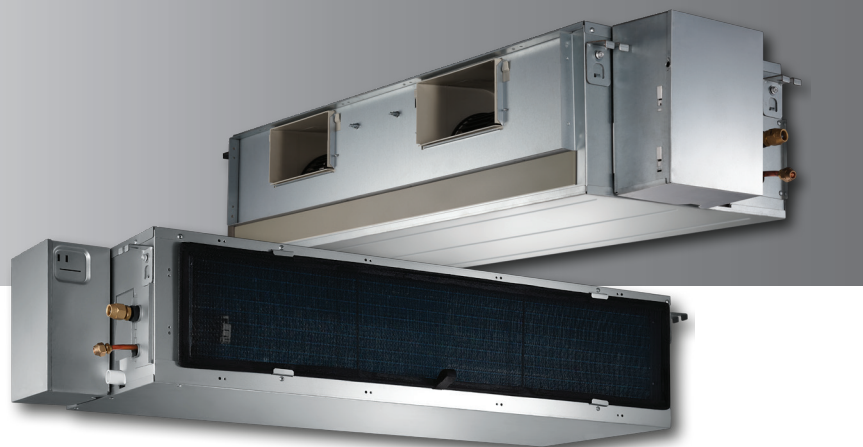


Hi-Lift drain pump for Cassette Units ▶

The drain pump can lift the condensing water up to 750mm.



Non-Inverter Hide Away



Duct Type

HP			2.5HP	3.5HP	4HP	5HP	6HP
Power Source		V/Phase/Hz	220-240V,1Ph,50Hz	220-240V,1Ph,50Hz	220-240V,1Ph,50Hz	380-415V,3Ph,50Hz	380-415V,3Ph,50Hz
Indoor Model			S-24PFY1F5	S-30PFY1F5	S-36PFY1F5	S-48PEY1F5	S-60PEY1F5
Outdoor Model			U-24PWY1F5	U-30PWY1F5	U-36PWY1F5	U-48PWEY1F8	U-60PWEY1F8
Cooling Capacity		KW	7.04	9.68	10.56	14.08	16.72
Cooling Capacity		Btu/h	24000	33000	36000	48000	57000
Rated Input Current (T1)		A	9	14	13.49	8	8.1
Power Input (T1)		KW	2.02	2.82	3.10	4.10	4.82
EER		W/W	3.49	3.43	3.40	3.43	3.47
		Btu/Hw	11.88	11.70	11.60	11.71	11.83
External Static Pressure (Rated)		Pa	25	37	37	50	50
External Static Pressure (Range)		Pa	0-100	0-120	0-120	0-200	0-150
Indoor Unit							
Air Volume	Hi-Me-Lo	m3/hour	1400/1150/980	2190/1818/1400	2171/1883/1436	2833/2377/1964	3291/2810/2355
Sound Pressure Level	Hi-Me-Lo	Db (A)	43/41/37	49.7/47.0/44.6	48.6/44.6/41	52.8/50.5/47.9	53/50/48
Dimensions	(WXDXH)	mm	1100x774x249	1200x874x300	1200x874x300	1200x625x380	1200x625x380
Net Weight		kg	31.2	44.8	44.4	56	56.5
Outdoor Unit							
Sound Pressure Level		Db (A)	60	61.9	63.1	62.1	62
Dimensions	(HXWXD)	mm	946x410x810	946x410x810	900x350x1170	952x415x1333	952x415x1333
Net Weight		kg	58.7	69.6	92.5	103.4	112.5
Piping Connections	Liquid/Gas Pipe	mm(inch)	Φ9.52/Φ15.9(3/8"/5/8")	9.52mm(3/8in)/19mm(3/4in)	9.52mm(3/8in)/19mm(3/4in)	9.52mm(3/8in)/22mm(7/8in)	Φ9.52/Φ22(3/8"/7/8")
Max. Pipe Length		m	25	30	30	50	50
Elevation Difference		m	15	20	20	30	30
Operating Range,Outdoor	Min-Max	Deg C	18-52	18-52	18-52	18-52	18-52



Wired remote controller

Remote Controller

Non-Inverter Cassette



Cassette Type

HP			2.5HP	4HP	5HP
Power Source		V/Phase/Hz	220-240V,1Ph,50Hz	220-240V,1Ph,50Hz	380-415V,3Ph,50Hz
Indoor Model			S-24PUY1F5	S-36PUY1F5	S-48PUY1F5
Outdoor Model			U-24PWY1F5	U-36PWY1F5	U-48PWY1F8
Cooling Capacity		KW	7.04	10.56	14.08
Cooling Capacity		Btu/h	24000	36000	48000
Rated Input Current (T1)		A	8.68	16.28	7.9
Power Input		KW	2.00	3.04	4.10
EER		W/W	3.52	3.47	3.43
		Btu/Hw	12.00	11.84	11.71
Indoor Unit					
Air Volume	Hi-Me-Lo	m3/hour	1271/1095/897	2059/1786/1456	2535/2346/2140
Sound Pressure Level	Hi-Me-Lo	Db (A)	47/44.5/42	56.4/53.4/49.1	58.2/56.6/54.6
Dimensions(Body)	(WxDxH)	mm	840x840x245	840x840x287	910x910x287
Dimensions(Panel)	(WxDxH)	mm	950x950x55	950x950x55	950x950x55
Net Weight (Body)	(WxDxH)	kg	26.7	29.8	34.4
Net Weight (Panel)	(WxDxH)	kg	5.8	5.8	5.8
Outdoor Unit					
Sound Pressure Level		Db (A)	60	63.1	62.2
Dimensions	(HXWxD)	mm	946x410x810	900x350x1170	952x415x1333
Net Weight		kg	58.7	92.5	102.2
Piping Connections	Liquid/Gas Pipe	mm(inch)	Ø9.52/Ø15.9(3/8"/5/8")	9.52mm(3/8in)/19mm(3/4in)	9.52mm(3/8in)/19mm(3/4in)
Max. Pipe Length		m	25	30	50
Elevation Difference		m	15	20	30
Operating Range,Outdoor	Min-Max	Deg C	18-52	18-52	18-52

Selectable Remote Controller



Wired remote controller



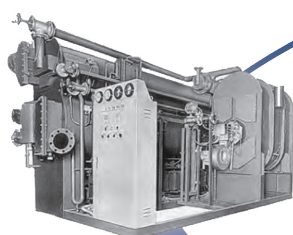
Wired remote controller

A Globally Trusted Air Conditioning Brand

With roots going back 56 years, the Panasonic Air Conditioning Business Division has grown to become a multinational company recognised around the world. Driven by a never-ending quest for product innovation, the group has evolved from manufacturing compressors to providing comprehensive air conditioning solutions. Panasonic has become a brand that people trust to deliver products with superior quality and reliability.

Panasonic's persistent innovation spurs the evolution of air conditioning solutions.

Starts production of absorption chillers



1971

Introduces first GHP (gas heat pump) VRF air conditioner



1985

1958

- Panasonic (using the National brand) introduces its first Home Cooler, a window-type air conditioner model



- Electrical Appliance Business Group (Kadoma) starts manufacture of Home Coolers
- Sales of Home Coolers begin

1961

- Starts exports of Home Coolers to South Vietnam

1965

- Launches Room Coolers



1968

- Begins development of rotary compressors
- The high efficiency and quality of these compressors draws interest from domestic and overseas air conditioner manufacturers
- External sales begin

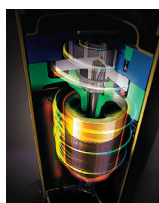
1972

- MAICO, the Division's first overseas manufacturing base, established in Malaysia
- Starts exports from MAICO to Japan, Indonesia, Australia, and other markets
- Begins operating twin-base system out of Japan and Malaysia



1983

- Launches inverter air conditioners
- Starts sales of Panasonic's first inverter air conditioners
- Inverters grow to become core technology in air conditioner industry
- Starts shipments of air conditioners to Panasonic America



1985

- Begins development of scroll compressors
- Scroll compressors bring high efficiency, low noise, and low vibration in comparison to rotary compressors

1990

- Launches world's first air conditioner equipped with compact scroll compressor

1993

- Establishes Matsushita-Wanbao (Guangzhou) Air Conditioner (MWAC)
- Establishes Matsushita-Wanbao (Guangzhou) Compressor (MWCC)
- Establishes Matsushita Air Conditioner Engineering (Matsushita ACE)

1995

- Releases world's first large-capacity modular combination VRF system with simultaneous heating/cooling

1995



Releases world's first large-capacity modular combination VRF system with simultaneous heating/cooling

1993



Releases world's first large-capacity modular combination VRF system

1989



Introduces world's first simultaneous 3-pipe heating/cooling VRF system

2003

- Debuts quiet, lightweight, compact EcoCute systems with improved energy-saving technology
- EcoCute adopts highly efficient, accumulator-less CO₂ scroll compressor
- Begins production of new energy-saving mini-VRF series multi-split packaged air conditioners for residential use
- CO₂ heat-pump hot water heater (EcoCute) uses non-toxic, non-combustible natural refrigerant (CO₂) instead of Freon, to reduce environmental impact
- Launches automatic filter-cleaning function for air conditioners (AC robot)



2005

- Panasonic products become extremely successful in Japan's air conditioner market
- Innovations such as airstream robots and motion sensors help grow Panasonic's market share

2006

- Cumulative global production of Panasonic compressors reaches 200 million units

2008

- Starts air-to-water heat pump business in Europe
- Hot water heating considered eco-friendly alternative to conventional fuel-type heating systems
- At the Energy Conservation Grand Prize awards, Panasonic air conditioners win Chairman's Award, whilst EcoCute wins Director General Prize (prizes presented by Energy Conservation Center of Japan)



2009

- Establishes sales company in Europe (PHAAE) dedicated to selling air conditioners
- Panasonic HA Air-Conditioning Europe (PHAAE) strengthens company's commercial air conditioning business

2010

- Begins collaboration with SANYO air conditioner business
- Through share exchange, SANYO and Panasonic Electric Works become wholly owned subsidiary

2011

- Launches FSV series of large-capacity VRF air conditioners

2012

- New Panasonic Group inaugurated

2013

- Expands VRF operation in Malaysia





Do not add or replace refrigerant other than the specified type.
Manufacturer is not responsible for the damage and deterioration
in safety due to usage of other refrigerant.

Issue Date: Jan 2020

Panasonic®

Panasonic Marketing Middle East & Africa FZE
P.O. Box 17985, Dubai, U.A.E. Tel: +971 8007262 | customer care@ae.panasonic.com | www.panasonic.com

JOIN US ON

