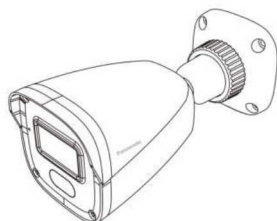


# Product Maintenance Manual

2M Fixed Bullet Network Camera

PM-EB2NLFR-W



## SPECIFICATIONS

Camera	Image Sensor	1/3"CMOS
	Image Size	1920×1080
	Iris Type	Fixed Iris
	Min. Illumination	0.0462 lux @F2.2, AGC ON; 0 lux with IR
	Lens	3.6mm@F2.2
	Focus	Fixed
	Angle Adjustment	Pan: 0°~360°; Tilt:0°~80°; Rotation: 0°~360°
Image	Video Compression	Mainstream: H.265+/H.265/H.264+/H.264 Sub stream: H.265+/H.265/H.264+/H.264
	Bit Rate	64 Kbps ~ 3 Mbps
Interfaces	Network	RJ 45 10M/100M self-adaptive Ethernet port
	Audio	1CH built-in MIC
Functions	Remote Monitoring	Web browser/NVR/NVMS2.X/Mobile APP
	Interface Protocol	ONVIF
	PoE	Yes
	IR Distance	IR range:10~20m; White light range:10~20m
	Ingress Protection	IP67
Others	Power Supply	PoE power supply
	Power Consumption	< 5W
	Operating Environment	-20 °C~55 °C (-4°F~131°F); Humidity: less than 95 % (non-condensing)
	Dimensions (mm)	162.1×74.8×73.8
	Weight (net)	Approx. 0.24KG



# Panasonic

### **WARNING**

This service information is designed for experienced repair technicians only and is not designed for use by the general public.

It does not contain warnings or cautions to advise non-technical individuals of potential dangers in attempting to service a product.

Products powered by electricity should be serviced or repaired only by experienced professional technicians. Any attempt to service or repair the product or products dealt with in this service information by anyone else could result in serious injury or death.

	<b>CAUTION</b> RISK OF ELECTRIC SHOCK DO NOT OPEN	
<b>CAUTION</b> TO REDUCE THE RISK OF ELECTRIC SHOCK, DO NOT REMOVE COVER (OR BACK), NO USER SERVICEABLE PARTS INSIDE. REFER SERVICING TO QUALIFIED SERVICE PERSONNEL.		

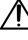


This symbol warns the user that uninsulated voltage within the unit may have sufficient magnitude to cause electric shock. Therefore, it is dangerous to make any kind of contact with any inside part of this unit.



This symbol alerts the user that important literature concerning the operation and maintenance of this has been included. Therefore, it should be read carefully in order to avoid any problems.

### **IMPORTANT SAFETY NOTICE**

There are special components used in this equipment which are important for safety. These parts are indicated by the “” mark on the replacement parts list. It is essential that these critical parts should be replaced with manufacturer’s specified parts to prevent X-radiation, shock, fire, or other hazards. Do not modify the original design without permission of manufacture.

### **About lead free solder (PbF)**

#### **Distribution of PbF PCB:**

PCBs (manufactured) using lead free solder (PbF) will have a stamp on the PCB.

#### **Caution:**

- Lead free solder has a higher melting point than standard solder. Typically, the melting points is 35°C - 40°C (95°F - 104°F) higher. Please use a soldering iron with temperature control and adjust it to 360°C - 370°C (680°F - 698°F). In case of using high temperature soldering iron, please be careful not to heat too long.
- Lead free solder will tend to splash when heated too high (600°C/1112°F).
- Lead free solder (Sn-3.0Ag-0.5Cu) or equivalents are recommended on repairing our lead solder PCB.

## Contents

**Chapter 1:How to reset your device's password?**

**Chapter 2:How to upgrade your device?**

**Chapter 3:How to update your device's software?**

## Chapter1 How to reset your device's password

### 1.1 Open the IP Manager Tool software in your desktop/PC



The latest version of the firmware's can be downloaded from the Panasonic website.

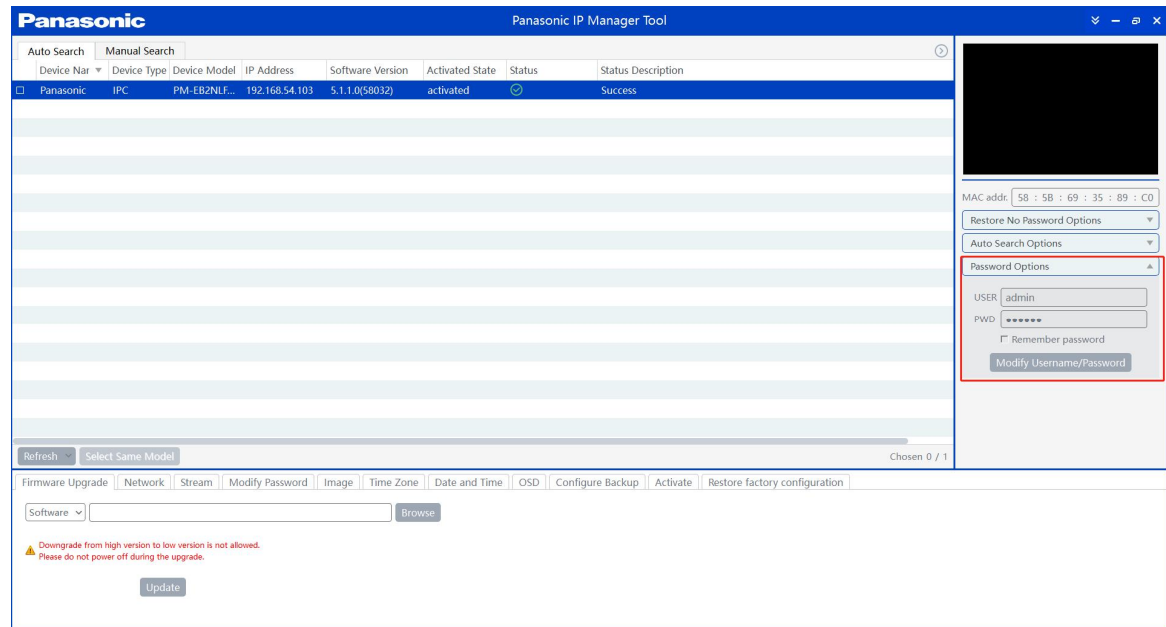
### 1.2 Once the IP manager software searches all the connected device, select the camera for which reset of password is required and enter the MAC ID as shown below.

### 1.3 Click on "Restore"

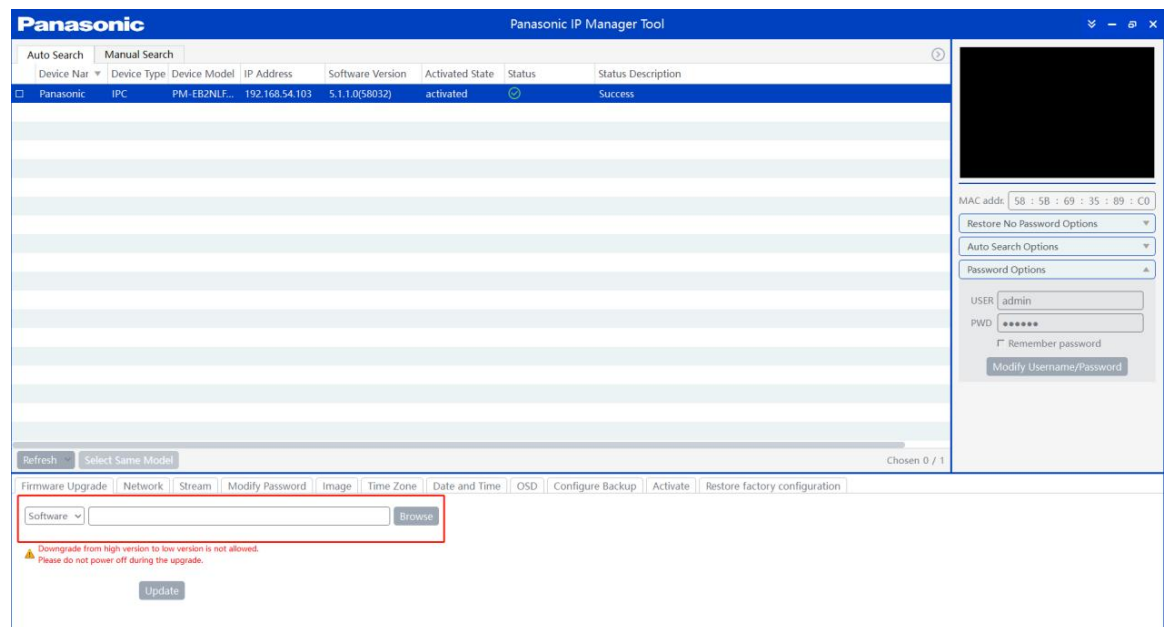
### 1.4 Power-off & Power-on (Reboot) the device, within 30 seconds to complete the process.

## Chapter 2 How to upgrade your device?

2.1 Open IP Manager tool and select the device for firmware upgrade and enter the username and password details as shown in the below screenshot as a reference.



2.2 Select the corresponding software package to upgrade (latest version of the firmware can be downloaded from the Panasonic web site)



2.3 to Upgrade the camera devices, please select the relevant files as shown from the below table

### **Note:**

- Downgrading the firmware from higher version to lower version is not allowed.
- Ensure that the power supply is not interrupted, or device is switched off during the

upgrading process.

Below is the firmware details mapped with camera model numbers.

For Example:

PM-EB2NLFR (Model number) - 5.1.1(software version) - 20240903 (Firmware release date)

Firmware file: PM-EB2NLFR-5.1.1.0.59741-20240903