

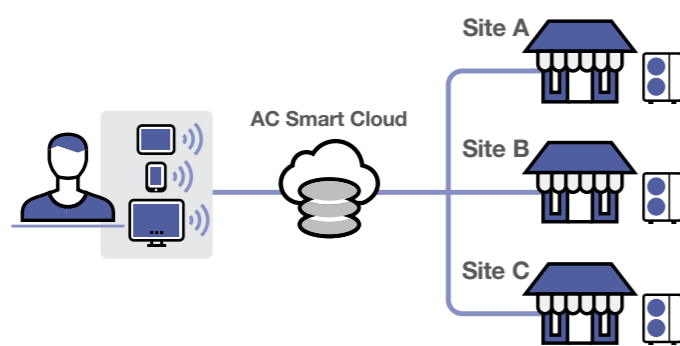
Panasonic AC Smart Cloud

The new Panasonic AC Smart Cloud system allows you to have complete control of all your installations. With a simple click, all your units from several locations, receive status updates in real-time reducing the chance of breakdowns and optimising costs.

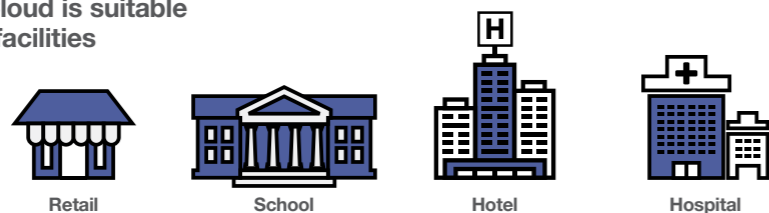


What is AC Smart Cloud?

Using a cloud computing system, AC Smart Cloud lets you monitor and manage the energy consumption of multiple locations from anywhere, anytime.



AC Smart Cloud is suitable for various facilities



Flexible and Scalable Solution

- Energy monitoring
- Anytime, Anywhere
- Site(s) management

Centralise control of your business premises, from wherever you are, 24/7/365. It doesn't matter how many sites you have, or where they are! The AC Smart Cloud system from Panasonic allows you to have complete control of all your installations, from your tablet or your computer. In a simple click, receive status updates in real-time of all your installations, preventing breakdowns and optimising costs.

Flexible solution for your business.



Scalable solution for your business.



* Customised to meet user demand / Upgraded new functions / Upgraded by new products / IT smart management.

Key Functions and Uniqueness

Multi site monitoring.

- It doesn't matter how many sites you have, easy to manage, operate, compare per sites, locations, rooms.



Powerful statistics for energy savings.

- Power consumption, capacity, efficiency level can be compared according to variable parameters (Yearly / monthly / weekly/ daily bases)



Schedule setting.

- Weekly / holiday timer setting as you want
- One setting can be copied to other sites



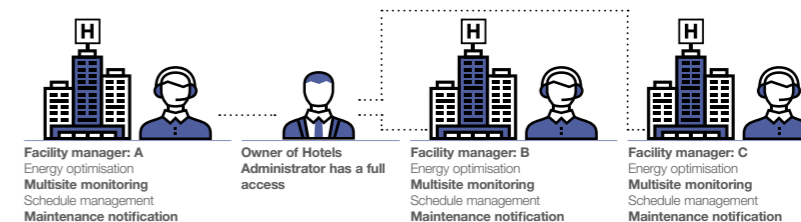
Maintenance notification.

- Error notification by email and with floor layout
- Maintenance notification of PAC / VRF outdoor units



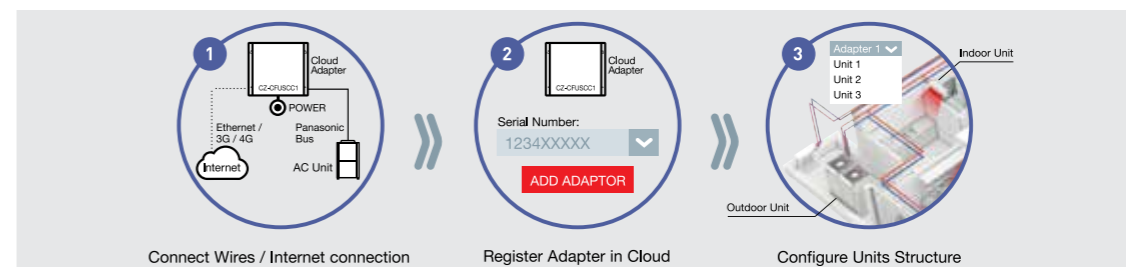
User customisation.

Site administrator can create users as desired and assign customised profiles.



3 Steps to Set Up AC Smart Cloud

Panasonic AC Smart Cloud is very easy to install on existing and new installations. The communication adaptor (CZ-CFUSCC1) is connected to the Panasonic bus and the Ethernet. Then in only 3 steps, the cloud system is running.



* Except for products for small sized project (Ultra Slim Ducted, Bulkhead Ducted, 4-Way Mini Cassette)