


Panasonic®

LUMIX  
S1II

Operating Instructions  
<Quick Start Guide>  
Digital Camera  
DC-S1M2

Please read these instructions carefully before using this product, and save this manual for future use.

Operating Instructions <Complete Guide>



Refer to "Operating Instructions <Complete Guide>" (HTML format/PDF format) for details about how to use the camera and notes on use.  
<https://panasonic.jp/support/dsc/oi/S1M2/index.html>

Panasonic Entertainment & Communication Co., Ltd.  
Web Site: <http://www.panasonic.com>

© Panasonic Entertainment & Communication Co., Ltd. 2025

GN

DVQX2653ZA  
F0325TN0

Dear Customer,

We would like to take this opportunity to thank you for purchasing this Panasonic Digital Camera. Please read this document carefully and keep it handy for future reference. Please note that the actual controls and components, menu items, etc. of your Digital Camera may look somewhat different from those shown in the illustrations in this document.

## Information for Your Safety

WARNING:

To reduce the risk of fire, electric shock or product damage,

- Do not expose this unit to rain, moisture, dripping or splashing.
- Use the recommended accessories.
- Do not remove covers.
- Do not repair this unit by yourself. Refer servicing to qualified service personnel.

### ■ Product identification marking

Product	Location
Digital camera	Bottom
Battery charger	Bottom

### ■ About the battery pack

CAUTION

- Danger of explosion if battery is incorrectly replaced. Replace only with the type recommended by the manufacturer.
- When disposing of the batteries, please contact your local authorities or dealer and ask for the correct method of disposal.

- Do not heat or expose to flame.
- Do not leave the battery(ies) in a car exposed to direct sunlight for a long period of time with doors and windows closed.
- Do not expose to low air pressure at high altitudes.
- Do not expose to extremely low air pressure, as this may result in explosions or leakage of flammable liquids and gases.

Warning

Risk of fire, explosion and burns. Do not disassemble, heat above 60 °C or incinerate.

- Always use a genuine Panasonic Shutter Remote Control (DMW-RS2: optional).
- Always use a genuine Panasonic Tripod Grip (DMW-SHGR2/DMW-SHGR1: optional).
- Use an Ultra High Speed HDMI cable (Type A–Type A plug) with the length less than 3 m (9.8 feet).
- Use a headphone cable with the length less than 3 m (9.8 feet).
- Use a stereo microphone cable with the length less than 3 m (9.8 feet).
- Keep the hot shoe cover out of reach of children to prevent swallowing.
- Keep the cover for the battery grip connector out of reach of children to prevent swallowing.
- Keep the memory card out of reach of children to prevent swallowing.
- Excessive sound pressure from earphones and headphones can cause hearing loss.

## Standard Accessories

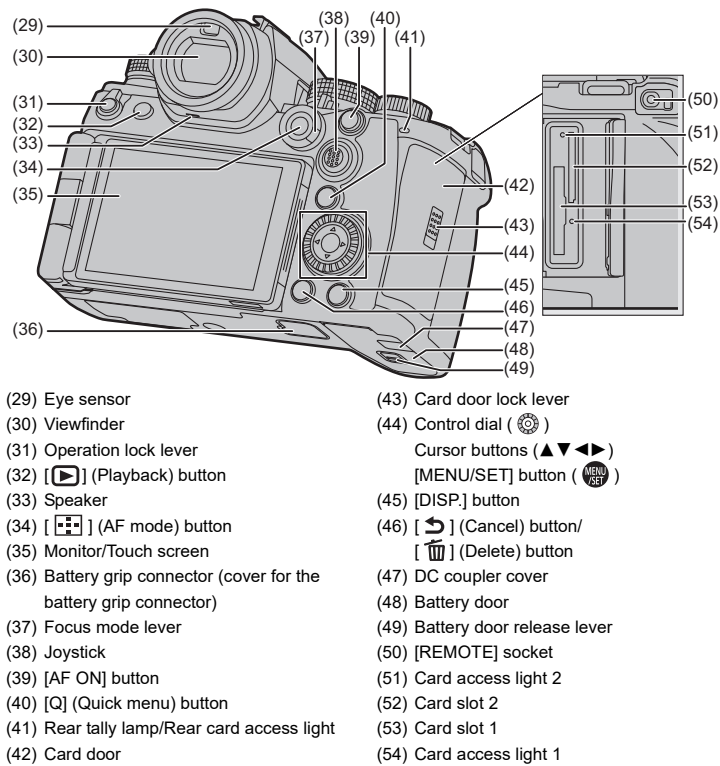
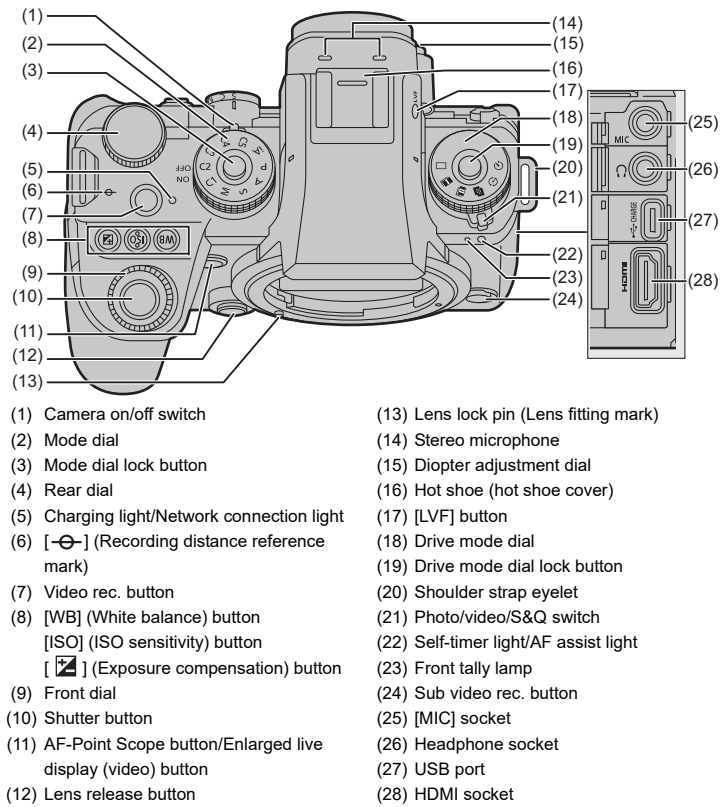
Product numbers correct as of May 2025.

### Digital camera body

<b>Battery pack</b> DMW-BLK22	<b>Body cap*</b> 1HE1MC891Z
<b>Battery charger</b> DVLC1005Z	<b>Hot shoe cover*</b> 4HR1MC5229Z
<b>Shoulder strap</b> DVPW1040Z	<b>Cover for the battery grip connector*</b> SKF0145K
* This is attached to the camera at the time of purchase.	

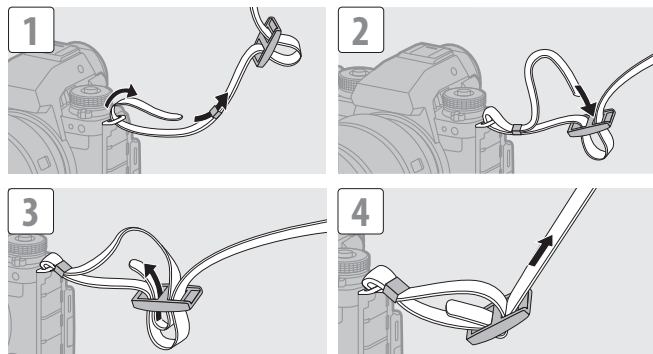
Consult the dealer or Panasonic if you lose the supplied accessories. (You can purchase the accessories separately.)

## Names of Important Parts



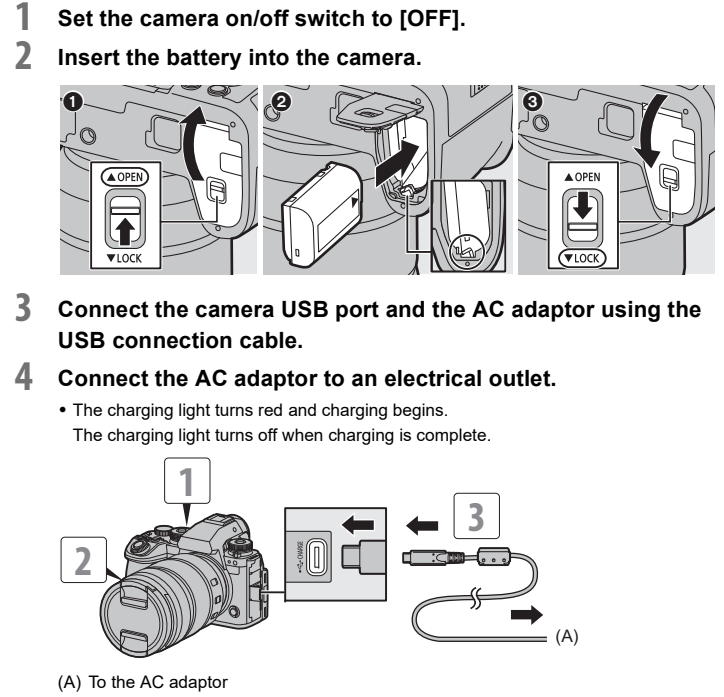
## Attaching a Shoulder Strap

Attach a shoulder strap to the camera with the following procedure to prevent it from dropping.



## Charging the Battery

Charge using an AC adaptor (optional/commercially available) and a USB connection cable (commercially available).



(A) To the AC adaptor	
Charging time	Approx. 170 min

- Using either the camera body and the optional AC Adaptor (DMW-AC11) or the camera body and the supplied accessories of the optional Battery Charger (DMW-BTC15).
- The supplied charger can also be used to charge instead of the camera body.

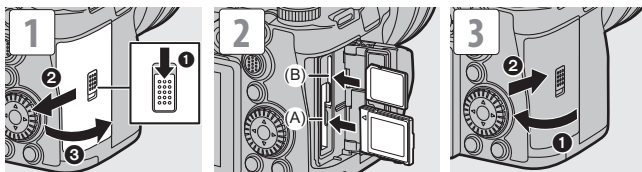
Cautions

- The battery that can be used with the camera is DMW-BLK22. (As of May 2025)
- Always use genuine Panasonic batteries (DMW-BLK22).
- If you use other batteries, we cannot guarantee the quality of this product.
- It is recommended to use the Panasonic AC Adaptor (DMW-AC11: optional) or the supplied accessories of the Panasonic Battery Charger (DMW-BTC15: optional) for charging.
- You can charge with the camera body or the supplied charger using a commercially available AC adaptor and a USB connection cable.
  - \*Recommended specifications for the commercially available AC adaptor
    - Supports PD (Power Delivery)
    - Supports 9 V/3 A (27 W) DC output
    - USB Type-C terminal
  - \*Use a USB connection cable with 27 W output or better for charging.
- You can also use an AC adaptor with 5 V/500 mA or better for charging. However, charging time may be longer than with the recommended AC adaptor.
- Operation is not guaranteed with all commercially available devices.
- Using charging methods other than those specified may result in fluid leakage, overheating, combustion, rupturing, etc., and these may cause injury.
- This battery may present a risk of fire or chemical burn if mis-treated.
- Place the removed battery in a plastic bag, and store or keep away from metallic objects (clips, etc.).
- When disposing of the batteries, please contact your local authorities or dealer and ask for the correct method of disposal.

## Inserting Cards (Optional)

You can use CFexpress cards and SD memory cards with this camera.

- For information on memory cards with confirmed operation, check the following support site:  
<https://panasonic.jp/support/global/cs/dsc/connect/index.html>  
(English only)



(A) Card slot 1: CFexpress card  
(B) Card slot 2: SD card

- Match the orientation of the cards as shown in the figure and then insert them firmly until they click.
- To remove a card, confirm that the corresponding card access light has turned off, push the card until it clicks, then pull the card out straight.
- Format the cards with the camera before use.
- [ ] ⇒ [ ] ⇒ [ ] ⇒ Select [Card Format]

CAUTION, HOT CARD

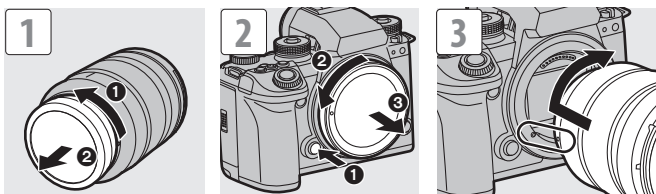
- As indicated on the inside of the card door, the card may be hot just after the camera has been used. Be careful when removing. When a warning of high temperature is indicated on the screen, do not take the card out immediately, but rather wait for the temperature to drop and the indication to disappear.

(C) CAUTION, HOT CARD

## Attaching a Lens

The lens mount of this camera is compliant with the L-Mount standard of Leica Camera AG.

- Refer to catalogs/websites for information regarding supported lenses.  
<https://panasonic.jp/support/global/cs/dsc/connect/index.html>  
(English only)
- Attaching commercially available accessories that do not comply with the L-Mount standard may lead to operation failure or malfunction of the camera.
- If a failure or malfunction occurs due to this cause, the warranty will be void.



- Attach by rotating the lens until it clicks.
- When removing the lens or body cap, rotate while pressing the lens release button.



