



# Panasonic®

## Operating Instructions

(Household) Epilator

Model No. ES-ED23

## Contents

<b>Safety precautions .....</b>	<b>3</b>	<b>Cleaning .....</b>	<b>11</b>
<b>Intended use .....</b>	<b>7</b>	<b>Troubleshooting .....</b>	<b>13</b>
<b>Parts identification .....</b>	<b>8</b>	<b>Battery life .....</b>	<b>14</b>
<b>Charging .....</b>	<b>8</b>	<b>Removing the built-in rechargeable battery .....</b>	<b>14</b>
<b>Before use .....</b>	<b>9</b>	<b>Specifications .....</b>	<b>14</b>
<b>How to use .....</b>	<b>10</b>		

Thank you for purchasing this Panasonic product.

**Before operating this unit, please read these instructions completely and save them for future use.**






## Safety precautions



To reduce the risk of injury, loss of life, electric shock, fire, and damage to property, always observe the following safety precautions.

### Explanation of symbols

The following symbols are used to classify and describe the level of hazard, injury, and property damage caused when the denotation is disregarded and improper use is performed.

 <b>DANGER</b>	Denotes a potential hazard that will result in serious injury or death.
 <b>WARNING</b>	Denotes a potential hazard that could result in serious injury or death.
 <b>CAUTION</b>	Denotes a hazard that could result in minor injury or property damage.

The following symbols are used to classify and describe the type of instructions to be observed.

	This symbol is used to alert users to a specific operating procedure that must not be performed.
	This symbol is used to alert users to a specific operating procedure that must be followed in order to operate the unit safely.



## WARNING

### ► This product

**This product has a built-in rechargeable battery. Do not throw into flame or heat. Do not charge, use, or leave in high temperatures.**



- Doing so may cause overheating, ignition, or explosion.



**Never disassemble except when disposing of the product.**

- Doing so may cause fire, electric shock, or injury.



**Do not modify or repair.**

- Doing so may cause fire, electric shock, or injury.  
Contact an authorized service centre for repair (battery change etc.).

### ► In case of an abnormality or malfunction

**Immediately stop using and remove the adaptor if there is an abnormality or malfunction.**

- Failure to do so may cause fire, electric shock, or injury.

**<Abnormality or malfunction cases>**



• **The main unit, adaptor or cord is deformed or abnormally hot.**

• **The main unit, adaptor or cord smells of burning.**

• **There is abnormal sound during use or charging of the main unit, adaptor or cord.**

- Immediately request inspection or repair at an authorized service centre.

### ► Preventing accidents

**Do not place within reach of children or infants. Do not let them use it.**



- Doing so may cause an accident or injury due to accidental ingestion of brush, etc.



## WARNING

**This appliance is not intended for use by persons (including children) with reduced physical, sensory or mental capabilities, or lack of experience and knowledge, unless they have been given supervision or instruction concerning use of the appliance by a person responsible for their safety. Children should be supervised to ensure that they do not play with the appliance.**

- Failure to do so may cause an accident or injury.

**The supply cord cannot be replaced. If the cord is damaged, the AC adaptor should be scrapped.**

- Failure to do so may cause an accident or injury.

### ► Power supply

**Do not connect or disconnect the adaptor to a household outlet with a wet hand.**

- Doing so may cause electric shock or injury.

**Do not immerse the AC adaptor in water or wash it with water.**

**Do not place the AC adaptor over or near water filled sink or bathtub.**

**Never use the appliance if the AC adaptor is damaged or if the power plug fits loosely in a household outlet.**

**Do not damage or modify, or forcefully bend, pull, or twist the cord. Also, do not place anything heavy on or pinch the cord.**

- Doing so may cause electric shock or fire due to a short circuit.

**Do not use in a way exceeding the rating of the household outlet or the wiring.**

- Exceeding the rating by connecting too many plugs to one household outlet may cause fire due to overheating.

**Do not use anything other than the supplied AC adaptor for any purpose.**



**Also, do not use any other product with the supplied AC adaptor. (See page 8.)**

- Doing so may cause burn or fire due to a short circuit.

**Always ensure the appliance is operated on an electric power source matched to the rated voltage indicated on the AC adaptor.**



**Fully insert the adaptor or appliance plug.**

- Failure to do so may cause fire or electric shock.

**Always unplug the adaptor from a household outlet when cleaning.**



- Failure to do so may cause electric shock or injury.

**Regularly clean the power plug and the appliance plug to prevent dust from accumulating.**



- Failure to do so may cause fire due to insulation failure caused by humidity.

Disconnect the adaptor and wipe with a dry cloth.



## CAUTION

### ► To protect the skin

**The following persons should not use this appliance:**

- Persons suffering from atopic dermatitis or rashes and other skin diseases
- Persons with allergic diathesis or persons who are easily irritated by cosmetics, clothing, metals, etc.
- Persons who are easily suppurated
- Persons suffering from varicose veins, diabetes, hemophilia, etc.
- Persons who have trouble stopping bleeding
- Use in such cases may cause the skin to become sensitive or cause inflammation, bleeding, or increased pain.





# CAUTION

## **Do not use in the following cases:**

- During menstruation, pregnancy, or about one month after giving birth
- When you are not well or when you feel an abnormality in your skin or body
- After drinking alcohol or taking medicine, or when you are very tired
- Use in such cases may cause the skin to become sensitive or cause inflammation, bleeding, or increased pain.

## **Do not use in the following body area:**

- Injury, rash, moles, bruises, warts, pimples, etc.
- On suntanned skin
- Doing so may cause injury, inflammation of the skin, or bleeding.

## **Do not use the epilation head for legs/arms to epilate your underarms and bikini-line.**

- Doing so may cause injury or inflammation of the skin.

## **Do not use the soap with a scrub or with peeling effect.**

- Doing so may cause injury to the skin, color stains or other skin trouble.

## **Do not turn ON the switch without the head attached.**

- Doing so may cause finger injury or cause hair or clothing entanglement and damage.

## **Do not use with the frame removed.**

- Doing so may cause finger injury or cause hair or clothing entanglement and damage.

## **Before using, check that the skin protector, disc, frame are free from deformities, cracks, and damage.**

- Failure to do so may cause injury to the skin.

## **The skin protector is easily deformed, so store with the protection cap attached.**

- Failure to do so may result in deformation or damage to the skin protector, which may cause injury to skin.

## **Apply the skin protector at a 90° angle to your skin with gentle force.**

- Failure to do so may cause injury to the skin or cause hair or clothing entanglement and damage.

## **► Note the following precautions**

### **Do not share with your family or others.**

- Doing so may cause infection or inflammation.

### **Do not allow metal objects or trash to adhere to the power plug or the appliance plug.**

- Doing so may cause electric shock or fire due to a short circuit.

### **Do not continuously aim the light directly into your eyes.**

- Doing so may cause dizziness.

### **Do not wrap the cord around the adaptor or the appliance when storing.**

- Doing so may cause the wire in the cord to break with the load, and may cause fire due to a short circuit.

### **Do not drop or subject to shock.**

- Doing so may cause injury.

### **Disconnect the adaptor from the household outlet when not charging.**

- Failure to do so may cause electric shock or fire due to electrical leakage resulting from insulation deterioration.



## CAUTION

**Disconnect the adaptor or the appliance plug by holding onto the adaptor or the appliance plug instead of the cord.**

- Disconnecting by holding onto the cord may cause electric shock or injury.

### ► About using the epilation head

**Do not use in the following body area:**

- Face, genitals and genital area, or thighs
- Inner side of the upper arms and areas such as elbows or knees which are prone to sagging
- Doing so may cause injury, inflammation of the skin, or bleeding.

**The following persons should not use this appliance:**

- Persons who have suffered skin problems (suppuration, inflammation, etc.) caused by epilation (plucking, depilation, waxing, etc.)
- Use in such cases may cause the skin to become sensitive or cause inflammation, bleeding, or increased pain.

**Do not use epilation head in the following ways:**

- Using just before swimming or sea bathing (use at least 2 days before such activities)
- Using just before bathing
- Engaging in extreme sports or exercise right after epilation
- Doing so may cause infection or inflammation resulting from bacteria that enter the body through the pores.



**Do not apply strong pressure to the skin, move repeatedly over the same area or move back and forth in one area. Also, do not use with a jabbing motion.**

- Doing so may cause injury or inflammation of the skin, or increased pain.



**If skin problems continue for 2 days or longer after treatment, stop using the unit and contact a dermatologist.**

- Failure to do so may cause symptoms to worsen.

### Handling of the removed battery when disposing



## DANGER

- The rechargeable battery is exclusively for use with this appliance. Do not use the battery with other products.
- Do not charge the battery after it has been removed from the product.
- Do not throw into fire or apply heat.
- Do not hit, disassemble, modify, or puncture with a nail.
- Do not let the positive and negative terminals of the battery get in contact with each other through metallic objects.
- Do not carry or store the battery together with metallic jewellery such as necklaces and hairpins.
- Do not use or leave the battery where it will be exposed to high temperatures, such as under direct sunlight or near other sources of heat.
- Never peel off the tube.
- Doing so may cause overheating, ignition, or explosion.



## WARNING



**After removing the rechargeable battery, do not keep it within reach of children and infants.**

- The battery will harm the body if accidentally swallowed. If this happens, consult a physician immediately.



**If the battery fluid leaks out and comes in contact with the eyes, do not rub the eyes, and thoroughly rinse with clean water, such as tap water.**

- Failure to do so may cause eye injury. Consult a physician immediately.



## CAUTION



**If the battery fluid leaks out and comes in contact with the skin or clothes, rinse off with clean water, such as tap water.**

- Failure to do so may cause inflammation.

## Intended use

### ► Using the head of epilation

These heads can be used for wet.

The following symbol means suitable for use in a bath or shower.



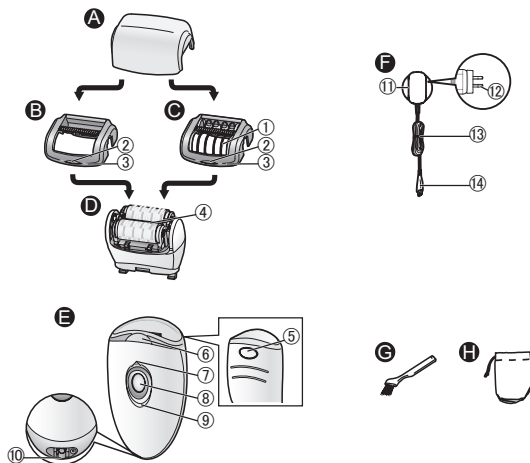
**WARNING:** Detach the main body from the AC adaptor before cleaning it in water.

### ► Notes

- Do not use alcohol, nail polish remover, or detergent (ex. liquid hand soap), etc. to clean the appliance. Doing so may cause failure, cracking or discoloration of the main body.
- Keep the appliance away from sinks, bathrooms or other high-humidity areas where it could be exposed to water and moisture after use.
- Keep the appliance away from where it will be exposed to high temperatures or direct sunlight.
- When storing the epilator, always attach the protection cap for the epilation head.
- The following symbol indicates that a specific detachable power supply unit is required for connecting the electrical appliance to the supply mains. The type reference of power supply unit is marked near the symbol.



## Parts identification



**A** Protection cap for epilator head (legs/arms)

**B** Fast cap

**C** Gentle cap (➔ Page 11)

① Skin protector

② Cap release ribs

③ Frame

**D** Epilation head for legs/arms

④ Epilation discs

**E** Main body

⑤ Head release button

⑥ LED light

⑦ Mode lights

⑧ Power switch

⑨ Charging indication/ notification light

⑩ Socket

**F** AC adaptor (RE7-87)

⑪ Adaptor

⑫ Power plug

⑬ Cord

⑭ Appliance plug

Accessories

**G** Cleaning brush

**H** Pouch

## Charging

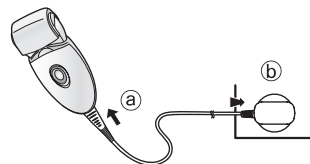
For best performance, fully charge the appliance before use. You cannot operate the appliance while charging.

**Charging time = Approx. 1 hour**

The epilator can be used for approximately 30 minutes (40 minutes when using the gentle cap) after 1 hour of charging. (This will differ depending on the temperature.)

**Plug the AC adaptor into the epilator (a) and a household outlet (b).**

- Recommended ambient temperature for charging is 15 - 35 °C. The battery may not charge properly or not at all under extreme low or high temperatures.



While charging



Red light appears.

After charging is completed



Red light goes off.

Abnormal charging



Blinks twice every second.

- The charging time may decrease depending on the charging capacity.
- If there is noise from the radio or other sources while using or charging the appliance, move to a different location to use the appliance.



<To check if charging is completed>

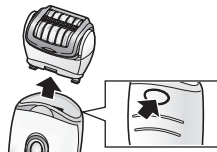
If you remove and reinsert the appliance plug while charging, the charging indication/notification light glows and turns off after approximately 5 seconds.

- Charging the appliance every time it is used will not affect the life of the rechargeable battery.
- When charging the appliance for the first time or when it has not been in use for more than 6 months, the charging time may change or the charging indication/notification light may not glow for a few minutes. It will eventually glow if kept connected.

## Before use

### Selecting the head

- 1** Remove the head while pushing the head release button.

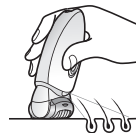


- 2** Push the head until it clicks.



### <LED light>

The LED light comes on when the power is turned on. The light will remain on while the power is ON.



### <Select the mode>

Operation will change in order from “NORMAL” → “SOFT” → “OFF” each time the power switch is pressed.

#### NORMAL

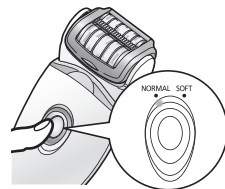
In NORMAL mode, epilation is performed in a short time with fast disc rotation speed.

- The orange lamp will light up.

#### SOFT

SOFT mode will control the rotation speed of the discs, and minimize irritation at the time of epilation.

- The green lamp will light up.



#### OFF

The power will be switched OFF.

### <When the battery capacity is low>

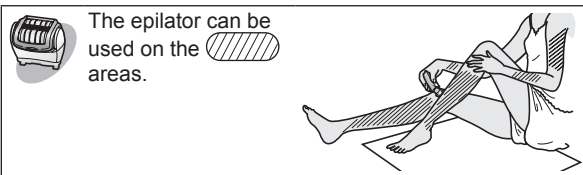
- The charging indication/notification light (→) blinks once every second.
- The operating time varies depending on usage or temperature after the charging indication/notification light blinks.




# How to use

## Epilation head

### Areas suitable for epilation



- Using the epilator on areas other than those marked  may cause pain or skin trouble.

### Areas not suitable for epilation

The epilator should not be used on the inner side of the upper arms and areas such as elbows or knees which are prone to sagging.



WET epilation (epilating after wetting the skin and epilator and then applying foam) makes the skin softer so it is gentler to your skin when epilating. For DRY epilation, begin at step 3. Before DRY epilation, wipe dry any moisture or sweat from the skin.

## 1 Wet your skin.

## 2 Wet the discs and place a small quantity of liquid shower gel on the discs.

- Always use shower gel when wet epilating.
- Do not use a shower gel with a scrub or with granular salt, this may cause a malfunction.
- Rinse any shower gel out of your hands.



## 3 Select the mode by pressing the power switch [⏻ 8].


(⇒ Page 9)

- Foam is created. Foam makes the epilator slide better, so you can move it fast.



- The appliance may not operate in an ambient temperature lower than approximately 5 °C.
- Apply the epilator at 90° to your skin and move it slowly so that it slides over your skin.

### <Epilating legs or arms>

 Upwards from the bottom of the leg.  
Inwards from the outside of the arm.



## Tips for best epilation results

The hair removal is not permanent, so from the 2nd use we recommend that you epilate the arms and legs about **once every two weeks**.

### <For beginners/those with sensitive skin>

When epilating for the first time, or when using on sensitive skin, we recommend using the gentle cap.

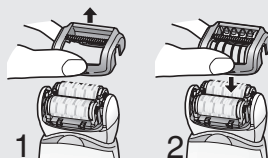
The gentle cap has a skin protector for gentler epilation, to remove hair by holding the skin down to reduce pain.

- We also recommend to use the SOFT mode rotation.

(➡ Page 9)

1. Remove the fast cap [B].

2. Attach the gentle cap [C].



- Massaging with a body puff may help to prevent ingrown hairs.
- Reddening might appear after use. A cool towel will help if you feel pain or there is a rash.
- If your skin gets dry after epilation, we recommend applying a moisture lotion two days after epilation.
- Make sure skin is clean before and after use.

### <Best hair length for epilation>

Trim your hair before epilating for the first time or if you have not epilated for a long time. Hair removal is easier and less painful when the hair is short.

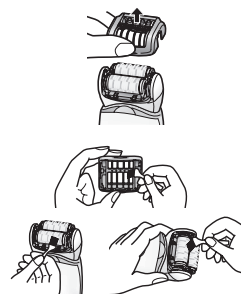
## Cleaning

- Always clean the heads and caps after use to keep them in a hygienic state.
- Switch off and unplug the appliance before cleaning.
- Take care not to damage the skin protector, the frame, the fast cap and the gentle cap during cleaning.

### Dry cleaning [B][C][D]

1. Lift fast/gentle caps, the frame upward while holding the cap release ribs [B][C] ②

2. Clean the gentle cap [C], the epilation head [D] with the cleaning brush [G].



## Wet cleaning [B C D]

1. Wet the discs, and then apply liquid hand soap.



2. Turn the switch on and then foam is created.



3. Wash the head with water to wash out hair.

- Do not use hot water.
- If soap is not completely washed away, then a white deposit can accumulate and prevent the discs from moving smoothly.



4. Turn the switch off, wipe the appliance with a dry cloth and dry it well.

# Troubleshooting

Problem	Possible cause	Action
The appliance does not operate.	▶ It is not charged.	▶ Fully charge the appliance.
	▶ The switch is turned ON with the adaptor connected to the household outlet.	▶ Charging is only possible when connected to the household outlet. Disconnect from the household outlet before use.
	▶ The skin protector or discs are deformed, cracked, or damaged.	▶ Request repair at an authorized service centre.
	▶ Hair dust has accumulated.	▶ Clean the hair dust.
	▶ Shower gel has adhered to the discs.	▶ Wash it off by soaking in warm water.
The usage time gets short.	▶ The appliance is used with approximately 5 °C or lower.	▶ Use the appliance in an ambient temperature approximately 5 °C or higher.
	▶ The appliance is pressed against skin too hard.	▶ Contact to skin with gentle force.
	▶ Not charged fully.	▶ Fully charge the appliance.
The appliance stops during operation.	▶ The appliance is pressed against skin too hard.	▶ Contact to skin with gentle force.
	▶ Not charged fully.	▶ Fully charge the appliance.
Cannot remove hair.	▶ The appliance is used on long hair.	▶ Use on hair approximately 2 to 3 mm long.
The hair becomes stubble.	▶ The way the unit is applied or moved is not correct.	▶ Refer to page 10.
The appliance is not removing the hair as well as before.	▶ Hair dust has accumulated.	▶ Clean the hair dust.
	▶ The skin protector or discs are deformed, cracked, or damaged.	▶ Request repair at an authorized service centre.

If the problems still cannot be solved, contact the store where you purchased the unit or a service centre authorized by Panasonic for repair.

## Battery life

Approximately 3 years.

If the operating time is significantly shorter even after a full charge, the battery has reached the end of its life.

(The battery life may change due to usage and storage conditions.)

The battery in this appliance is not intended to be replaced by consumers. Have the battery replaced by an authorized service centre.

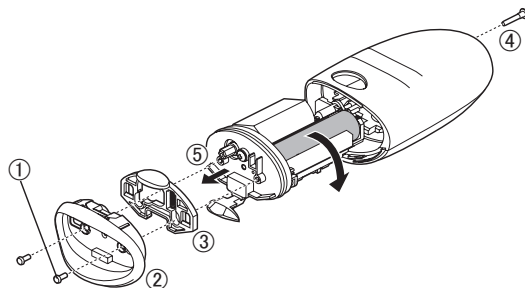
## Removing the built-in rechargeable battery

**Remove the built-in rechargeable battery before disposing of the appliance.**

Please make sure that the battery is disposed of at an officially designated location if there is one.

This figure must only be used when disposing of the appliance, and must not be used to repair it. If you dismantle the appliance yourself, it will no longer be waterproof, which may cause it to malfunction.

- Remove the appliance from the AC adaptor.
- Use the battery until it fully discharges if there is any charge remaining.
- Perform steps ① to ⑤ and lift the battery, and then remove it.
- Take care not to short circuit the positive and negative terminals of the removed battery, and insulate the terminals by applying tape to them.



### For environmental protection and recycling of materials

This appliance contains a Li-ion battery.

Please make sure that the battery is disposed of at an officially assigned location, if there is one in your country.

## Specifications

Power supply	See the name plate on the AC adaptor. (Automatic voltage conversion)
Charging time	Approx. 1 hour

This product is intended for household use only.

## This image shows a blank sheet of white paper with horizontal ruling lines. The lines are evenly spaced and run across the width of the page. There are no margins, text, or other markings on the paper.

Panasonic Corporation  
<http://www.panasonic.com>  
© Panasonic Corporation 2018