

Panasonic®

FM-AM 2 Band Receiver RF-P50D

Operating Instructions
Instrucciones de funcionamiento
使用说明书
إرشادات التشغيل



Thank you for purchasing this product.

For optimum performance and safety, please read these instructions carefully.

Please keep this manual for future reference.

For Australia and New Zealand

 **Disposal of Old Equipment and Batteries
Only for European Union and countries
with recycling systems**

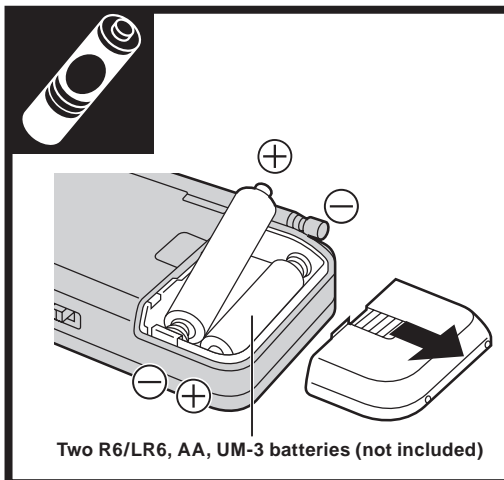
This symbol is only valid in the European Union.
If you wish to discard this product, please contact your local authorities or dealer and ask for the correct method of disposal.

GU GC

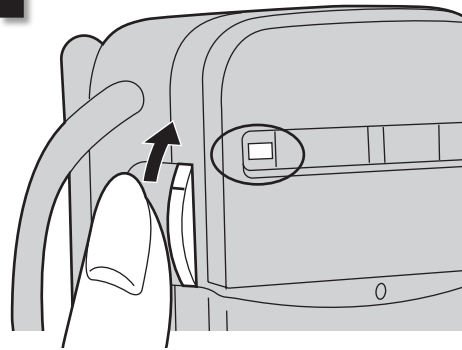
En Sp Cn Ar

Panasonic Corporation
Web Site: <http://www.panasonic.com>

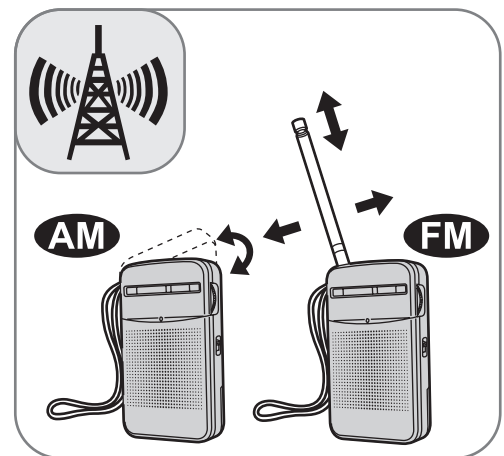
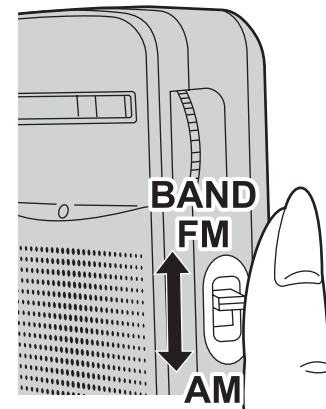
TQBM0066
L1216CH0



1 POWER ON



2

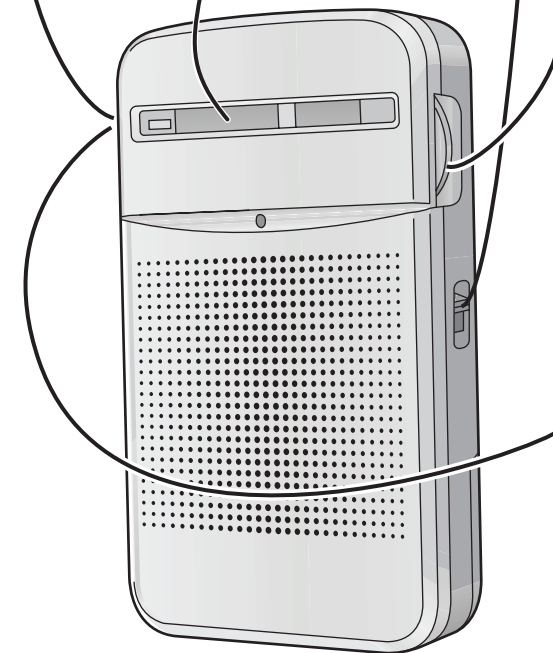


Luminous bar: Collects light from lighting equipment and the sun, and glows when the environment becomes dark.

Banda luminiscente: Recoge la luz de elementos de iluminación y del sol, y resplandece en cuando el entorno oscurece.

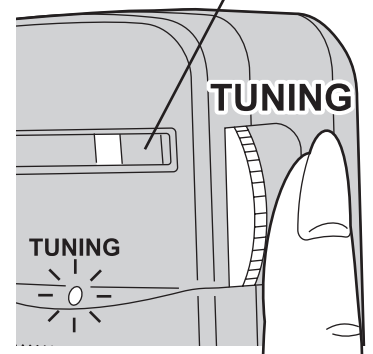
夜光条: 从发光设备及太阳收集光能, 并在黑暗环境下发光。

الشريط المضيء: يقوم بتجميع الضوء من أجهزة الإنارة والشمس, وينير عندما يصبح الجو مظلمًا.

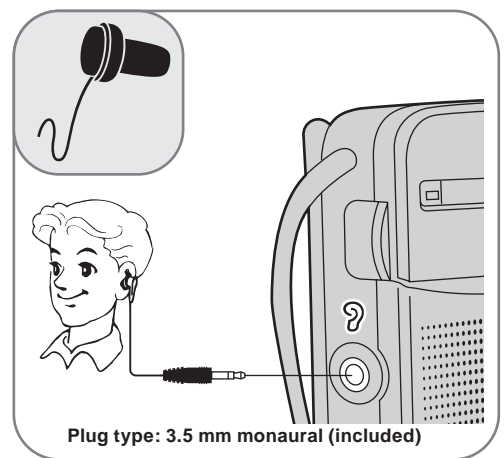
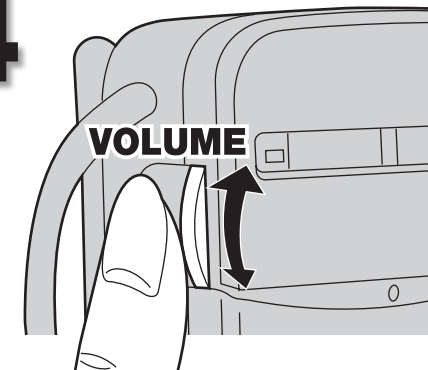


3

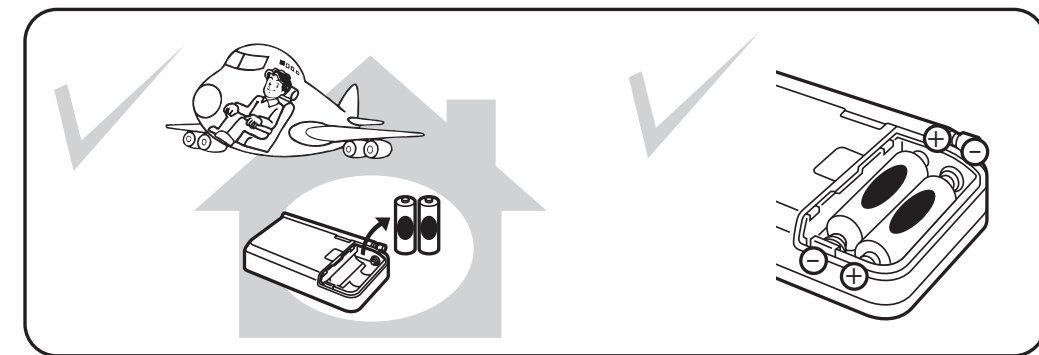
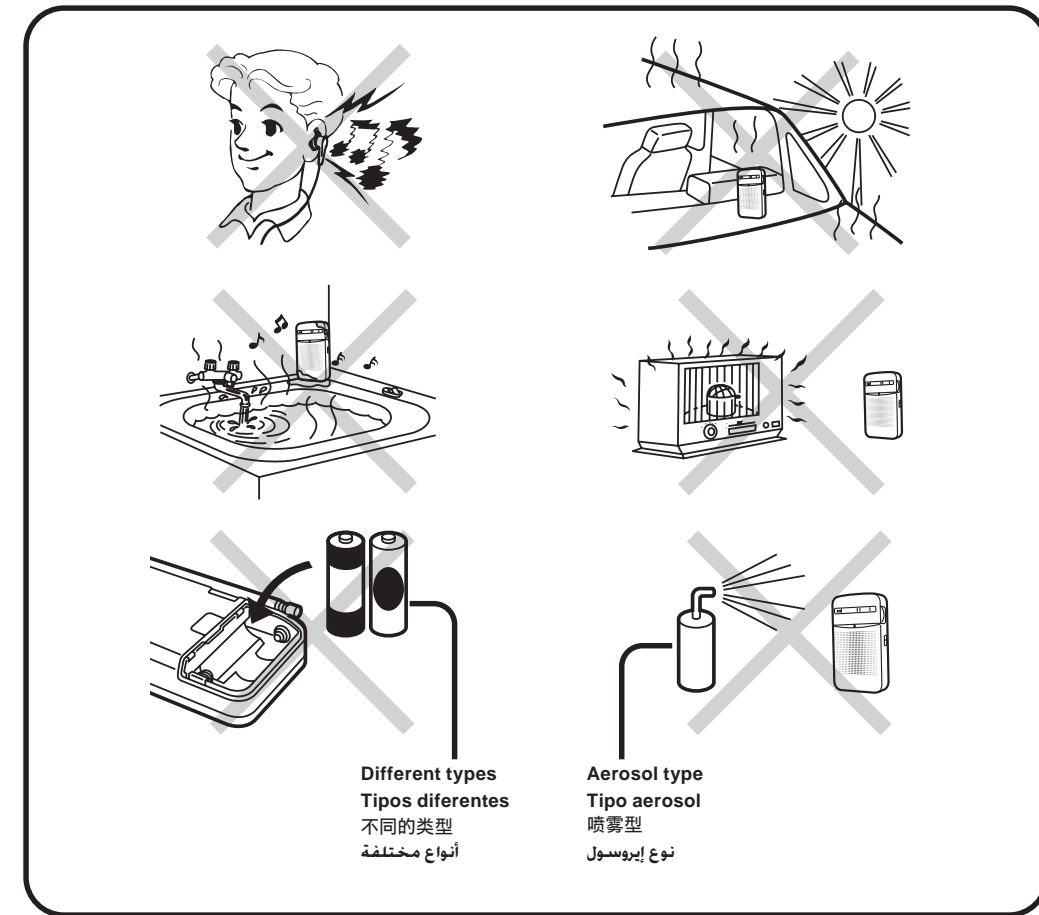
FM 88 92 96 100 104 108 MHz
AM 5.3 6.5 8 10 13 16 ×100 kHz



4



CAUTION! / ¡ATENCIÓN! / 注意! / تنبيه!



ENGLISH

Safety precautions

WARNING!

- To reduce the risk of fire, electric shock or product damage,
 - Do not expose this unit to rain, moisture, dripping or splashing.
 - Do not place objects filled with liquids, such as vases, on this unit.
 - Use only the recommended accessories.
 - Do not remove covers.
 - Do not repair this unit by yourself. Refer servicing to qualified service personnel.

CAUTION!

- This unit may receive radio interference caused by mobile telephones during use. If such interference occurs, please increase separation between this unit and the mobile telephone.
- Excessive sound pressure from earphones and headphones can cause hearing loss.

- Batteries**
- Do not heat or expose to flame.
 - Do not leave the battery(ies) in a car exposed to direct sunlight for a long period of time with doors and windows closed.
 - Danger of explosion if battery is incorrectly replaced. Replace only with the type recommended by the manufacturer.
 - When disposing the batteries, please contact your local authorities or dealer and ask for the correct method of disposal.
 - If rechargeable batteries are to be used, rechargeable batteries manufactured by Panasonic are recommended.

Specifications

Frequency range	
FM	87 – 108 MHz
AM	520 – 1730 kHz
Power requirement	DC 3 V (Two R6/LR6, AA, UM-3 batteries)
Power output	150 mW (max.)
Speaker	5.7 cm
Output jack	EARPHONE, 8 Ω
Dimensions (WxHxD)	69.5 x 117.4 x 29.7 mm
Mass	111 g (without batteries)
Play time:	

<div>(When used at 25°C on a flat, stable surface)</div> <div>Panasonic alkaline dry cell battery:</div> <div> <div>FM: About 64 hours</div> <div>AM: About 68 hours</div> </div>
<div>The play time may be less depending on the operating condition.</div>

Note:

Specifications are subject to change without notice. Mass and dimensions are approximate.

ESPAÑOL

Precauciones de seguridad

¡ADVERTENCIA!

- Para reducir el riesgo de incendios, descargas eléctricas o daños en el producto,
 - No exponga este aparato a la lluvia, humedad, goteo o salpicaduras.
 - No coloque encima del mismo objetos con líquidos como, por ejemplo, floreros.
 - Utilice solamente los accesorios recomendados.
 - No quite las tapas.
 - No reparar esta unidad usted mismo. Solicite las reparaciones al personal de servicio cualificado.

¡ATENCIÓN!

- Esta unidad puede tener interferencias causadas por teléfonos móviles durante su utilización. Si tales interferencias resultan evidentes, aumente la separación entre la unidad y el teléfono móvil.
- La presión sonora excesiva de los auriculares puede causar pérdida de audición.

- Pila**
- No caliente o exponga a las llamas.
 - No deje la(s) pila(s) en un automóvil expuesto a luz solar directa durante un largo período de tiempo con las puertas y ventanas cerradas.
 - Hay peligro de explosión si se sustituye incorrectamente la pila. Solo sustituir con el mismo tipo recomendado por el fabricante.
 - Al desechar las baterías, por favor contacte con sus autoridades locales o distribuidor y consulte el método correcto de eliminación.
 - Si van a utilizarse baterías recargables, se recomiendan las fabricadas por Panasonic.

Especificaciones

Gama de frecuencias	
FM	87 – 108 MHz
AM	520 – 1730 kHz
Demanda de potencia	DC 3 V (Dos R6/LR6, AA, UM-3 pilas)
Potencia de salida	150 mW (máx.)
Altavoz	5,7 cm
Toma de salida	EARPHONE, 8 Ω
Dimensiones (AnxAlxPrf)	69,5 x 117,4 x 29,7 mm
Peso	111 g (Sin pilas)
Tiempo de reproducción:	

<div>(Cuando se utiliza a 25°C en una superficie plana y estable)</div> <div>Pila seca alkaline Panasonic:</div> <div> <div>FM: Aproximadamente 64 horas</div> <div>AM: Aproximadamente 68 horas</div> </div>
<div>El tiempo de reproducción puede ser menos depende de la condición de funcionamiento.</div>

Nota:

Las especificaciones están sujetas a cambios sin previo aviso. El peso y las dimensiones son aproximados.

中文

安全注意事项

警告！

- 为减低火灾、触电或产品损坏的危险，
 - 不要将本机暴露在雨水、潮湿、滴水或溅水下。
 - 不要将盛满液体的物体，例如花瓶等放置在本机上。
 - 只使用被推荐的附件。
 - 勿拆开机壳。
 - 切勿自行修理本机。任何有关维修的问题请只咨询合格人员。

注意！

- 本机在使用过程中，可能会受到行动电话的无线电波干扰。如果干扰出现，增加本机和行动电话之间的距离。
- 来自耳机或头戴耳机传出的过大声压会导致听觉受损。

电池

- 切勿让电池遇热或触火。
- 切勿将电池长时间留在车门和车窗紧闭并有阳光直射的车子内。
- 如果电池放置错误，有发生爆炸的危险。更换电池时，只使用制造商建议的类型的电池。
- 当处理废旧电池时，请联络当地政府单位或经销商以洽询正确的弃置方法。
- 如果使用充电电池，建议使用由 Pananosic (松下电器) 所生产的充电电池。

技术规格

收音机频率范围	
FM	87 ~ 108 MHz
AM	520 ~ 1730 kHz
耗电量	DC 3 V (两个 R6/LR6, AA, UM-3 电池)
功率输出	150 mW (最大)
扬声器	5.7 cm
输出插孔	耳机, 8 Ω
尺寸 (宽 x 高 x 深)	69.5 x 117.4 x 29.7 mm
重量	111 g (不包括电池)

播放时间:	
<div>(在平坦，平稳的表面上，于 25°C)</div> <div>Panasonic 碱性干电池:</div> <div> <div>FM: 约 64 小时</div> <div>AM: 约 68 小时</div> </div>	
<div>取决于操作条件，播放时间可能较短。</div>	

备注:

规格若有变更，恕不另行通知。重量和尺寸为近似值。

عربي

إحتياطات السلامة

تحذير!

- لتقليل خطر الحريق أو الصدمة الكهربائية أو تلف المنتج،
 - لا تعرض هذه الوحدة للمطر أو الرطوبة أو التقطير أو رشرشة الماء.
 - لا تضع أشياء مملوءة بالسوائل، مثل المزهريرات، على هذه الوحدة.
 - استخدم فقط الملحقات الموصى بها.
 - لا تفتح الأغطية.
 - لا تحاول إصلاح الوحدة بنفسك. ارجع إلى موظفي الصيانة والتوصليح المؤهلين من اجل الصيانة والتوصليح.

تنبيه!

- يمكن أن تستقبل هذه الوحدة تداخلًا من الراديو بسبب الهوائف المحمولة أثناء الاستخدام. في حالة حدوث مثل هذا التداخل، يرجى زيادة المسافة بين هذه الوحدة والهاتف المحمول.
- يمكن أن يؤدي ضغط الصوت الزائد من سماعات الأذن وسماعات الرأس إلى فقدان السمع.

البطارية

- لا تستخّن البطارية أو تعرّضها للهب.
- لا تترك البطارية (البطاريات) في سيارة معرضة لأشعة الشمس المباشرة لمدة طويلة من الوقت مع إغلاق الأبواب والنوافذ.
- هناك خطورة حدوث انفجار في حالة استبدال البطارية بشكل غير صحيح. استبدل البطارية بالنوع الذي توصي به الشركة المصنّعة.
- عند التخلص من البطاريات، يُرجى الاتصال بالسلطات المحلية أو الموزع لديدك والسؤال عن الطريقة الصحيحة للتخلص منها.
- إذا كان يتعين استخدام بطاريات قابلة لإعادة الشحن، فينصح باستخدام البطاريات القابلة لإعادة الشحن التي تصنعها Panasonic.

المواصفات

نطاق التردد:	
FM	87–108 ميغاهرتز
AM	520–1730 كيلوهرتز
متطلب الطاقة:	تيار مباشر3 DC فولت (بطاريتان R6/LR6 و AA و UM-3)
خرج الطاقة:	150 مللي واط (الحد الاقصى)
السماعات	5.7 سم
مقيس خرج:	سماعات الأذن: 8 أوم
الأبعاد (عرض × ارتفاع × عمق)	69.5 مم × 117.4 مم × 29.7 مم
الكتلة	111 جم (دون بطاريات)
وقت التشغيل:	

<div>(في حالة استخدام عند درجة حرارة 25° م وعلى سطح مستو ومستقر)</div> <div>بطاريات باناسونيك القلوية الجافة:</div> <div> <div>FM: حوالي 64 ساعة</div> <div>AM: حوالي 68 ساعة</div> </div>
<div>قد يكون وقت الاستماع أقل بالاعتماد على ظروف التشغيل.</div>

ملاحظة:

تخضع المواصفات للتغيير دون إشعار مسبق. تعد أرقام الكتلة والأبعاد تقريبية.

Limited Warranty (For Australia Only)

Panasonic Warranty

- The product is warranted for 12 months from the date of purchase. Subject to the conditions of this warranty Panasonic or its Authorised Service Centre will perform necessary service on the product without charge for parts or labour, if in the opinion of Panasonic, the product is found to be faulty within the warranty period.
- This warranty only applies to Panasonic products purchased in Australia and sold by Panasonic Australia or its Authorised Distributors or Dealers and only where the products are used and serviced within Australia or it's territories. Warranty cover only applies to service carried out by a Panasonic Authorised Service Centre and only if valid proof of purchase is presented when warranty service is requested.
- This warranty only applies if the product has been installed and used in accordance with the manufacturer’s recommendations (as noted in the operating instructions) under normal use and reasonable care (in the opinion of Panasonic). The warranty covers normal domestic use only and does not cover damage, malfunction or failure resulting from use of incorrect voltages, incorrect installation, accident, misuse, neglect, build-up of dirt or dust, abuse, maladjustment of customer controls, mains supply problems, thunderstorm activity, infestation by insects or vermin, tampering or repair by unauthorised persons (including unauthorised alterations), introduction of sand, humidity or liquids, commercial use such as hotel, office, restaurant, or other business or rental use of the product, exposure to abnormally corrosive conditions or any foreign object or matter having entered the product.
- This warranty does not cover the following items unless the fault or defect existed at the time of purchase:
 - Cabinet Part(s)
 - Video or Audio Tapes
 - SD cards or USB devices
 - User replaceable Batteries
 - DVD, Blu-ray or Recordable Discs
 - Video / Audio Heads from wear and tear in normal use
 - Information stored on Hard Disk Drive, USB stick or SD card
 - DTV reception issues caused by TV Aerial / Cabling / Wall socket(s) etc
- Some products may be supplied with Ethernet connection hardware. The warranty is limited on such products and will not cover
 - Internet and or DLNA connection / setup related problems
 - Access fees and or charges incurred for internet connection
 - The use of incompatible software or software not specifically stipulated in the product operations manual; and
 - Any indirect or consequential costs associated with the incorrect use or misuse of the hardware, its connection to the internet or any other device.
- To claim warranty service, when required, you should:
 - Telephone Panasonic’s Customer Care Centre on 132600 or visit our website referred to below and use the Service Centre Locator for the name / address of the nearest Authorised Service Centre.
 - Send or take the product to a Panasonic Authorised Service Centre together with your proof of purchase receipt as a proof of purchase date. Please note that freight and insurance to and / or from your nearest Authorised Service Centre must be arranged by you.
 - Note that home or pick-up / delivery service is available for the following products in the major metropolitan areas of Australia or the normal operating areas of the nearest Authorised Service Centres:
 - Plasma / LCD televisions / displays (screen size greater than 103 cm)
- The warranties hereby conferred do not extend to, and exclude, any costs associated with the installation, de-installation or re-installation of a product, including costs related to the mounting, de-mounting or remounting of any screen, (and any other ancillary activities), delivery, handling, freighting, transportation or insurance of the product or any part thereof or replacement of and do not extend to, and exclude, any damage or loss occurring by reason of, during, associated with, or related to such installation, de-installation, re-installation or transit.

Panasonic Authorised Service Centres are located in major metropolitan areas and most regional centres of Australia, however, coverage will vary dependant on product. For advice on exact Authorised Service Centre locations for your product, please telephone our Customer Care Centre on 132600 or visit our website and use the Service Centre Locator.

In addition to your rights under this warranty, Panasonic products come with consumer guarantees that cannot be excluded under the Australian Consumer Law. If there is a major failure with the product, you can reject the product and elect to have a refund or to have the product replaced or if you wish you may elect to keep the goods and be compensated for the drop in value of the goods. You are also entitled to have the product repaired or replaced if the product fails to be of acceptable quality and the failure does not amount to a major failure.

If there is a major failure in regard to the product which cannot be remedied then you must notify us within a reasonable period by contacting the Panasonic Customer Care Centre. If the failure in the product is not a major failure then Panasonic may choose to repair or replace the product and will do so in a reasonable period of time from receiving notice from you.

THIS WARRANTY CARD AND THE PURCHASE DOCKET (OR SIMILAR PROOF OF PURCHASE) SHOULD BE RETAINED BY THE CUSTOMER AT ALL TIMES
<p>If you require assistance regarding warranty conditions or any other enquiries, please visit the Panasonic Australia website www.panasonic.com.au or contact by phone on 132 600 <i>If phoning in, please ensure you have your operating instructions available.</i></p>
<p>Panasonic Australia Pty. Limited ACN 001 592 187 ABN 83 001 592 187 1 Innovation Road, Macquarie Park NSW 2113</p>
<p>PRO-031-F11 Issue: 4.0 01-01-2011</p>