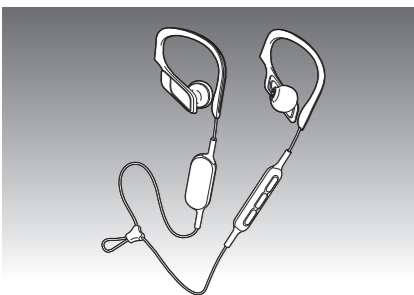


Basic Operating Instructions

Digital Wireless Stereo Earphones

Model No. **RP-BTS10**



Manufactured by:
Panasonic Corporation
Kadoma, Osaka, Japan
Importer for Europe:
Panasonic Marketing Europe GmbH
Panasonic Testing Centre
Winsbergring 15, 22525 Hamburg, Germany

Panasonic Corporation
Web Site: <http://www.panasonic.com>

© Panasonic Corporation 2017

TQBM0103
M0317KZ0

Dear customer

Thank you for purchasing this product.
Please read these instructions carefully before using this product, and save this manual for future use.

More detailed operating instructions are available in "Operating Instructions (PDF format)".
To read it, download it from the website.
http://panasonic.jp/support/global/cs/accessories/oi/rp_bts10/
• Click the desired language.



Accessories

Please check and identify the supplied accessories.

- 1 USB charging cord



For the United Kingdom and Ireland customers

Sales and Support Information

Customer Communications Centre

- For customers within the U.K.:
0344 844 3899
- For customers within Ireland:
01289 8333
- Monday - Friday 9:00am - 5:00pm (Excluding public holidays).
- For further support on your product, please visit our website:
www.panasonic.co.uk

Direct Sales at Panasonic U.K.

- Order accessory and consumable items for your product with ease and confidence by phoning our Customer Communications Centre - Monday - Friday 9:00am - 5:00pm (Excluding public holidays).
- Or go on line through our Internet Accessory ordering application at www.pas-europe.com
- Most major credit and debit cards accepted.
- All enquiries transactions and distribution facilities are provided directly by Panasonic U.K.
- It couldn't be simpler!
- Also available through our Internet is direct shopping for a wide range of finished products. Take a browse on our website for further details.

TQBM0103 (En)

Safety precautions

Unit

- Avoid using or placing this unit near sources of heat.
- Do not listen with this unit at high volume in places where you need to hear sounds from the surrounding environment for safety, such as at railroad crossings, and construction sites.
- Do not block the ventilation of this unit with items such as cloth for long periods of time while charging or while the power is on.

Allergies

- Discontinue use if you experience discomfort with the earphones or any other parts that directly contact your skin.
- Continued use may cause rashes or other allergic reactions.

Precautions for listening with the Earphones

- Do not use your earphones at a high volume. Hearing experts advise against continuous extended play.
- If you experience a ringing in your ears, reduce volume or discontinue use.
- Do not use while operating a motorised vehicle. It may create a traffic hazard and is illegal in many areas.
- You should use extreme caution or temporarily discontinue use in potentially hazardous situations.

This unit may receive radio interference caused by mobile telephones during use. If such interference occurs, please increase separation between this unit and the mobile telephone.

This unit is intended for use in moderate and tropical climates.

USB

- Do not use any other USB charging cords except the supplied one.

Caution: Use only the supplied USB charging cord when connecting to a computer.

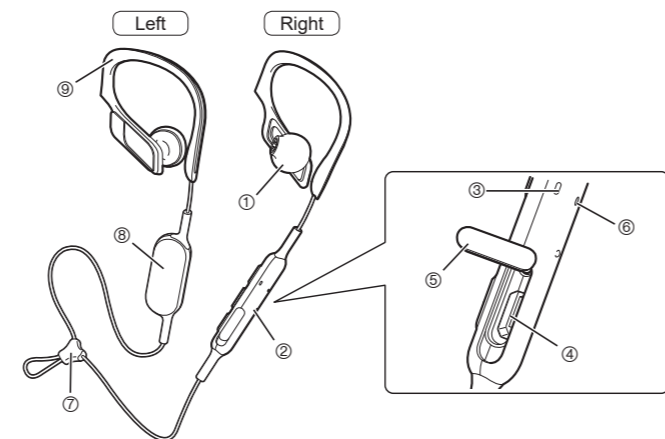
About water resistance

IPX2 equivalent



Incorrect use may cause malfunction.
For details, see the operating instruction on the website.

Part names

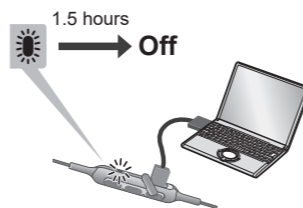


- ① Earphone
- ② Remote controller
- ③ LED indicator light
- ④ Charging terminal
- ⑤ USB lid
- ⑥ Microphone
- ⑦ Code adjuster
- ⑧ Battery case (Please remove the battery when disposing of this product. Please read the instruction on this manual.)
- ⑨ Clip

The product illustrations may differ from the actual product.

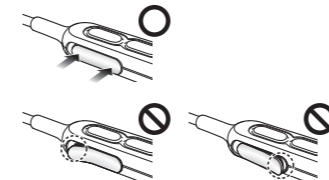
1 Charging

LED indicator light (next to charging terminal)



- If PC used for charging enters "sleep mode", charging may not take place.

Close the charging terminal cover securely.

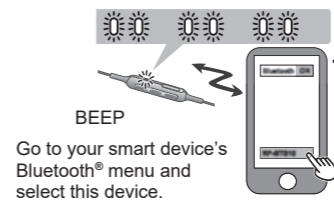
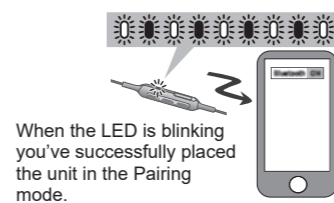
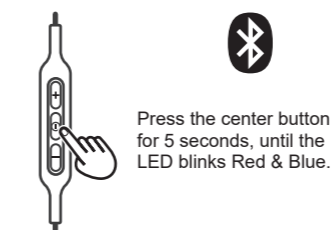


Do not touch the charging terminal with wet hand.

- If sweat or liquid is attached to the charging terminal, malfunction may occur.

2 Connecting a Bluetooth® device

Remote controller



LED lighting color :



3 Enjoy!

How to wear the earphones

Power on/off

Remote controlling

Press for 3 sec. On / Off

Press for 2 sec. / Press for 2 sec.

4 h 20 min. BEEP Off

5 min. Off

Operating time Auto power off

Operation example of the remote control

	Action	This unit	Music	Phone
+	Press	-	Increase the volume	Increase the volume
	Press for 2 sec.	-	Forward to the start of next track	-
①	Press	-	Play/Pause	Answer call/Call end
	Press twice quickly	-	-	Reject the incoming call/Switch the calling device
	Press for 3 sec.	Power on/off	-	-
-	Press	-	Decrease the volume	Decrease the volume
	Press for 2 sec.	-	Return to the start of current track	-

Note

"Increase/Decrease the volume" function is not available while pause.

Making a phone call

1. Connect the Bluetooth® enabled phone and unit
2. When answering an incoming call:
Press ① on the unit and answer the call
When making an outgoing call:
Make an outgoing call on the Bluetooth® enabled phone
3. Start talking
4. Press ① to end the phone call

Troubleshooting guide

Before requesting service, make the following checks. If you are in doubt about some of the check points, or if the remedies indicated do not solve the problem, consult your dealer for instructions.

General

The unit does not respond

- Push ① button for 10 seconds. The unit will be reset. (The pairing device information will not be deleted.)

Power supply and charging

Cannot charge the unit

- Make sure the computer is turned on and is not on standby or sleep mode.
- Is the USB port you are currently using working properly? If your computer has other USB ports, unplug the connector from its current port and plug it into one of the other ports.
- If the measures mentioned above are not applicable, unplug the USB charging cord and plug it in again.
- If the charge time and operating time become shortened, the battery may have run down. (Number of charging times of the installed battery: Approximately 300.)

Charging takes longer

- Make sure to charge in a room temperature between 10 °C and 35 °C (50 °F and 95 °F).

LED does not light during charging

- Is the USB charging cord (supplied) connected firmly to the USB terminal of the computer? (→ 1 "Charging")

The power does not turn on

- Is the unit being charged? The power cannot be turned on during charging. (→ 1 "Charging")

Bluetooth® device connection

The device cannot be connected

- Delete the pairing information for this unit from the Bluetooth® device, then pair them again. (→ 2 "Connecting a Bluetooth® device")

Sound and audio volume

No sound

- Make sure that the unit and the Bluetooth® device are connected correctly. (→ 2 "Connecting a Bluetooth® device")
- Check if music is playing on the Bluetooth® device.
- Make sure that the unit is turned on and the volume is not set too low.
- Pair and connect the Bluetooth® device and the unit again. (→ 2 "Connecting a Bluetooth® device")

Low volume

- Increase the volume of the unit. (→ 3 "Enjoy!")
- Increase the volume on the Bluetooth® device.

Sound from the device is cut off / Sound quality is bad

- Sound may be disrupted if signals are blocked. Do not fully cover this unit with the palm of your hand, etc.
- The device may be out of the 10 m communication range. Move the device closer to this unit.
- Remove any obstacle between this unit and the device.
- Switch off any wireless LAN device when not in use.
- A communication problem may arise if the battery is not fully charged. Charge the unit. (→ 1 "Charging")

Phone calls

You cannot hear the other person / Your voice does not reach the other person

- Make sure that the unit and the Bluetooth® enabled phone are turned on.
- Check if the unit and the Bluetooth® enabled phone are connected. (→ 2 "Connecting a Bluetooth® device")
- Check the audio settings of the Bluetooth® enabled phone. Switch the calling device to the unit if it is set to the Bluetooth® enabled phone.
- If the volume of the other person's voice is too low, increase the volume of both the unit and the Bluetooth® enabled phone.
- Water, etc. may be adhering to the inside the earphones. Adhering water, etc. may lower the voice of the other person.
- Water, etc. may be adhering to the microphone. Your voice may not reach the other person due to adhering water, etc.

Maintenance

Clean this unit with a dry and soft cloth.

- Do not use solvents including benzene, thinner, alcohol, kitchen detergent, a chemical wiper, etc. This might cause the exterior case to be deformed or the coating to come off.

Keeping the battery performance

- During the long period of disuse, full charge this unit once every 6 months to keep the battery performance.

Specifications

General

Power supply	DC 5 V, 0.6 W (Internal battery: 3.7 V (Li-polymer 90 mAh))
Operating time*1	Approx. 4 hours 20 minutes
Charging time*2 (25 °C)	Approx. 90 minutes
Charging temperature range	10 °C to 35 °C
Operating temperature range	0 °C to 40 °C
Operating humidity range	35%RH to 80%RH (no condensation)
Mass	Approx. 20 g
Water resistant	IPX2 equivalent

*1 It may be shorter depending on the operating conditions.

*2 Time taken to recharge from empty to full.

Bluetooth® section

Bluetooth® system specification	Ver. 4.1
Wireless equipment classification	Class 2 (2.5 mW)
Frequency band	2402 MHz to 2480 MHz
Max RF power	4 dBm (EIRP)
Supported profiles	A2DP, AVRCP, HSP, HFP
Supported codec	SBC
Operating distance	Up to 10 m

Speaker section

Driver units	14.3 mm
--------------	---------

Terminal section

DC IN	DC 5 V, 0.6 W
-------	---------------

Microphone section

Type	Mono
------	------

Accessory section

USB charging cord	0.1 m
-------------------	-------

● Specifications are subject to change without notice.

- The Bluetooth® word mark and logos are registered trademarks owned by Bluetooth SIG, Inc. and any use of such marks by Panasonic Corporation is under license.
 - Other trademarks and trade names are those of their respective owners.
 - Other system names and product names appearing in this document are in general the registered trademarks or trademarks of the respective developer companies.
- Note that the ™ mark and ® mark do not appear in this document.

Declaration of Conformity (DoC)

Hereby, "Panasonic Corporation" declares that this product is in compliance with the essential requirements and other relevant provisions of Directive 2014/53/EU. Customers can download a copy of the original DoC to our RE products from our DoC server:

<http://www.doc.panasonic.de>

Contact to Authorised Representative:

Panasonic Marketing Europe GmbH, Panasonic Testing Centre, Winsbergring 15, 22525 Hamburg, Germany

For Singapore only

Complies with
IDA Standards
DB01017

For Thailand only

This telecommunication equipment conforms to NTC/NBTC technical requirement.

To remove the battery when disposing of this unit

The following instructions are not intended for repairing purposes but for the disposal of this unit. This unit is not restorable once disassembled. When disposing of this unit, take out the battery installed in this unit and recycle it.

Danger

As the rechargeable battery is specifically for this product, do not use it for any other device.

Do not charge the removed battery.

- Do not heat or expose to flame.
- Do not leave the battery(ies) in a car exposed to direct sunlight for a long period of time with doors and windows closed.
- Do not pierce the battery with a nail, subject it to an impact, or dismantle or modify it.
- Do not let the wires touch any other metal or each other.
- Do not carry or store the battery with a necklace, hair pin, or the like.

Doing so may cause the battery to generate heat, ignite, or rupture.

Warning

Do not place the removed battery, and other items within reach of infants.

Accidental swallowing of such an item may have an adverse effect on the body.

- In the event that you think such an item has been swallowed, consult a doctor immediately.
- In the event of fluid leaking from the battery, take the following measure, and do not touch the fluid with bare hands.

Fluid entering into an eye may cause loss of eyesight.

- Wash the eye with water immediately without rubbing it, and then consult a doctor.

Fluid getting on your body or clothes may cause inflammation of the skin or injury.

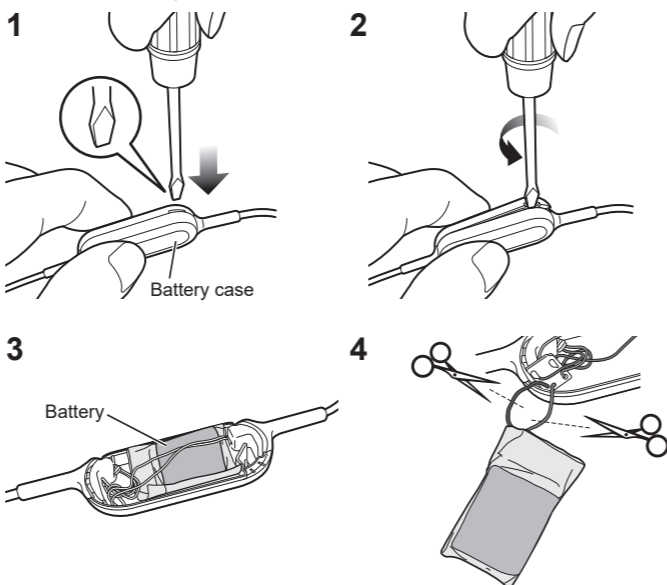
- Sufficiently rinse with clean water, and then consult a doctor.

A lithium-ion polymer rechargeable battery is built in to the battery case. Please discard according to local regulations.

When disposing this product, disassemble properly by following the procedure, and remove the internal rechargeable battery.

- Disassemble after the battery runs out.

- When disposing of the battery, please contact your local authorities or dealer and ask for the correct method of disposal.



1 Put a straight-slot screwdriver (commercially available) into the battery case.

- Make sure to keep fingers away from the tip of the screwdriver.
- Select a screwdriver to be large enough for a space under the joint part.

2 Use the screwdriver for leverage, push and open the battery case.

- Be careful not to touch the battery with the screwdriver.

3 Hold the battery and remove it.

4 Pull off the battery and separate it from the battery case by cutting off the wires, one by one, with scissors.

- Insulate the wire parts of the removed battery with electric tape.
- Do not damage or dismantle the battery.

Disposal of Old Equipment and Batteries Only for European Union and countries with recycling systems

These symbols on the products, packaging, and/or accompanying documents mean that used electrical and electronic products and batteries must not be mixed with general household waste. For proper treatment, recovery and recycling of old products and used batteries, please take them to applicable collection points in accordance with your national legislation.

By disposing of them correctly, you will help to save valuable resources and prevent any potential negative effects on human health and the environment.

For more information about collection and recycling, please contact your local municipality.

Penalties may be applicable for incorrect disposal of this waste, in accordance with national legislation.

Note for the battery symbol (bottom symbol):

This symbol might be used in combination with a chemical symbol. In this case it complies with the requirement set by the Directive for the chemical involved.

Limited Warranty (ONLY FOR AUSTRALIA)

Panasonic Warranty

- The product is warranted for 12 months from the date of purchase. Subject to the conditions of this warranty Panasonic or its Authorised Service Centre will perform necessary service on the product without charge for parts or labour, if in the opinion of Panasonic, the product is found to be faulty within the warranty period.
- This warranty only applies to Panasonic products purchased in Australia and sold by Panasonic Australia or its Authorised Distributors or Dealers and only where the products are used and serviced within Australia or its territories. Warranty cover only applies to service carried out by a Panasonic Authorised Service Centre and only if valid proof of purchase is presented when warranty service is requested.
- This warranty only applies if the product has been installed and used in accordance with the manufacturer's recommendations (as noted in the operating instructions) under normal use and reasonable care (in the opinion of Panasonic). The warranty covers normal domestic use only and does not cover damage, malfunction or failure resulting from use of incorrect voltages, incorrect installation, accident, misuse, neglect, build-up of dirt or dust, abuse, maladjustment of customer controls, mains supply problems, thunderstorm activity, infestation by insects or vermin, tampering or repair by unauthorised persons (including unauthorised alterations), introduction of sand, humidity or liquids, commercial use such as hotel, office, restaurant, or other business or rental use of the product, exposure to abnormally corrosive conditions or any foreign object or matter having entered the product.
- This warranty does not cover the following items unless the fault or defect existed at the time of purchase:

(a) Cabinet Part(s)	(e) DVD, Blu-ray or Recordable Discs
(b) Video or Audio Tapes	(f) Video / Audio Heads from wear and tear in normal use
(c) SD cards or USB devices	(g) Information stored on Hard Disk Drive, USB stick or SD card
(d) User replaceable Batteries	(h) DTV reception issues caused by TV Aerial / Cabling / Wall socket(s) etc
- Some products may be supplied with Ethernet connection hardware. The warranty is limited on such products and will not cover

(a) Internet and or DLNA connection / setup related problems
(b) Access fees and or charges incurred for internet connection
(c) The use of incompatible software or software not specifically stipulated in the product operations manual; and
(d) Any indirect or consequential costs associated with the incorrect use or misuse of the hardware, its connection to the internet or any other device.
- To claim warranty service, when required, you should:
 - Telephone Panasonic's Customer Care Centre on 132600 or visit our website referred to below and use the Service Centre Locator for the name/address of the nearest Authorised Service Centre.
 - Send or take the product to a Panasonic Authorised Service Centre together with your proof of purchase receipt as a proof of purchase date. Please note that freight and insurance to and / or from your nearest Authorised Service Centre must be arranged by you.
 - Note that home or pick-up/delivery service is available for the following products in the major metropolitan areas of Australia or the normal operating areas of the nearest Authorised Service Centres:
 - Plasma/LCD televisions / displays (screen size greater than 103 cm)
- The warranties hereby conferred do not extend to, and exclude, any costs associated with the installation, de-installation or re-installation of a product, including costs related to the mounting, de-mounting or remounting of any screen, (and any other ancillary activities), delivery, handling, freight, transportation or insurance of the product or any part thereof or replacement of and do not extend to, and exclude, any damage or loss occurring by reason of, during, associated with, or related to such installation, de-installation, re-installation or transit.

Panasonic Authorised Service Centres are located in major metropolitan areas and most regional centres of Australia, however, coverage will vary dependant on product. For advice on exact Authorised Service Centre locations for your product, please telephone our Customer Care Centre on 132600 or visit our website and use the Service Centre Locator.

In addition to your rights under this warranty, Panasonic products come with consumer guarantees that cannot be excluded under the Australian Consumer Law. If there is a major failure with the product, you can reject the product and elect to have a refund or to have the product replaced or if you wish you may elect to keep the goods and be compensated for the drop in value of the goods. You are also entitled to have the product repaired or replaced if the product fails to be of acceptable quality and the failure does not amount to a major failure.

If there is a major failure in regard to the product which cannot be remedied then you must notify us within a reasonable period by contacting the Panasonic Customer Care Centre. If the failure in the product is not a major failure then Panasonic may choose to repair or replace the product and will do so in a reasonable period of time from receiving notice from you.

**THIS WARRANTY CARD AND THE PURCHASE DOCKET (OR SIMILAR PROOF OF PURCHASE)
SHOULD BE RETAINED BY THE CUSTOMER AT ALL TIMES**

If you require assistance regarding warranty conditions or any other enquiries, please visit the **Panasonic Australia** website www.panasonic.com.au or contact by phone on **132 600** *If phoning in, please ensure you have your operating instructions available.*

Panasonic Australia Pty. Limited

ACN 001 592 187 ABN 83 001 592 187

1 Innovation Road, Macquarie Park NSW 2113

PRO-031-F11 Issue: 4.0

01-01-2011