

# Panasonic®

## Operating Instructions (Household) Rechargeable Shaver Model No. ES-SL33

### Contents

---

<b>Safety precautions .....</b>	<b>2</b>	Cleaning .....	10
Intended use.....	6	Troubleshooting.....	12
Parts identification .....	7	Battery life.....	13
Using the carrying holder.....	8	Removing the built-in rechargeable battery.....	13
Charging.....	8	Specifications .....	13
How to use.....	9		



Thank you for purchasing this Panasonic product.

**Before operating this unit, please read these instructions completely and save them for future use.**

## Safety precautions

To reduce the risk of injury, loss of life, electric shock, fire, and damage to property, always observe the following safety precautions.

### Explanation of symbols

The following symbols are used to classify and describe the level of hazard, injury, and property damage caused when the denotation is disregarded and improper use is performed.



## DANGER

Denotes a potential hazard that will result in serious injury or death.



## WARNING

Denotes a potential hazard that could result in serious injury or death.



## CAUTION

Denotes a hazard that could result in minor injury or property damage.

The following symbols are used to classify and describe the type of instructions to be observed.



This symbol is used to alert users to a specific operating procedure that must not be performed.



This symbol is used to alert users to a specific operating procedure that must be followed in order to operate the unit safely.



## WARNING

### ► This product

**This product has a built-in rechargeable battery.**

**Do not throw into flame or heat.**



- Doing so may cause fluid leak, overheating, or explosion.

**Do not modify or repair.**



- Doing so may cause fire, electric shock, or injury.
- Contact an authorized service center for repair (battery change etc).

**Never disassemble except when disposing of the product.**



- Doing so may cause fire, electric shock, or injury.

### ► In case of an abnormality or malfunction

**Immediately stop using and remove the adaptor if there is an abnormality or malfunction.**

- Failure to do so may cause fire, electric shock, or injury.

**<Abnormality or malfunction cases>**



- **The main unit, AC adaptor is deformed or abnormally hot.**
- **The main unit, AC adaptor smells of burning.**
- **There is an abnormal sound during use or charging of the main unit, AC adaptor.**
- Immediately request inspection or repair at an authorized service center.



# WARNING

## ► Power supply



**Do not connect or disconnect the adaptor to a household outlet with a wet hand.**

- Doing so may cause electric shock or injury.

**Do not immerse the AC adaptor in water or wash with water.**

**Do not clean with water when the AC adaptor is attached.**

**Do not place the AC adaptor over or near water filled sink or bathtub.**



**Never use the appliance if the AC adaptor is damaged or if the power plug fits loosely in a household outlet.**

**Do not damage or modify, or forcefully bend, pull, or twist the cord.**

**Also, do not place anything heavy on or pinch the cord.**

- Doing so may cause electric shock or fire due to a short circuit.

**Do not use in a way exceeding the rating of the household outlet or the wiring.**



- Exceeding the rating by connecting too many plugs to one household outlet may cause fire due to overheating.

**Do not use anything other than the supplied AC adaptor for any purpose.**



**Also, do not use any other product with the supplied AC adaptor. (See Page 7.)**

- Doing so may cause burns or fire due to short circuit.



**Always ensure the appliance is operated on an electric power source matched to the rated voltage indicated on the AC adaptor.**

**Fully insert the adaptor.**

- Failure to do so may cause fire or electric shock.



**Always unplug the adaptor from a household outlet when cleaning.**

- Failure to do so may cause electric shock or injury.



**Regularly clean the power plug and the appliance plug to prevent dust from accumulating.**

- Failure to do so may cause fire due to insulation failure caused by humidity.

→ Disconnect the AC adaptor and wipe with a dry cloth.

## ► Preventing accidents



**Do not store within reach of children or infants. Do not let them use it.**

- Putting the blade, the cleaning brush in the mouth may cause accidents and injury.



**This appliance is not intended for use by persons (including children) with reduced physical, sensory or mental capabilities, or lack of experience and knowledge, unless they have been given supervision or instruction concerning use of the appliance by a person responsible for their safety. Children should be supervised to ensure that they do not play with the appliance.**

- Failure to do so may cause an accident or injury.



**The supply cord cannot be replaced. If the cord is damaged, the AC adaptor should be scrapped.**

- Failure to do so may cause an accident or injury.



## CAUTION

### ► Protecting the skin

**Do not use excessive pressure to apply the system outer foil to your lip or other part of your face.**



**Do not apply the system outer foil directly to blemishes or injured skin.**

**Do not touch the blade section (metallic section) of the inner blade.**

- Doing so may cause injury to skin or hand.

**Do not forcefully press the system outer foil. Also, do not touch the system outer foil with fingers or nails when in use.**



**Do not use this product for hair on head or any other part of the body.**

- Doing so may cause injury to skin or reduce the life of the system outer foil.



**Check the system outer foil for cracks or deformations before use.**

- Failure to do so may cause injury to the skin.

**Be sure to place the carrying holder on the shaver when carrying around or storing.**



- Failure to do so may cause injury to skin or reduce the life of the system outer foil.

### ► Note the following precautions



**Do not drop or hit against other objects.**

- Doing so may cause injury.



**Do not wrap the cord around the adaptor when storing.**

- Doing so may cause the wire in the cord to break with the load, and may cause fire due to a short circuit.



**Do not disconnect the adaptor or the appliance plug by holding onto the cord.**

- Doing so may cause electric shock or injury.



**Do not share your shaver with your family or other people.**

- Doing so may result in infection or inflammation.



**Do not allow pins or trash to adhere to the power plug or the appliance plug.**

- Doing so may cause electric shock or fire due to a short circuit.



**Disconnect the adaptor from the household outlet when not charging.**

- Failure to do so may cause electric shock or fire due to electrical leakage resulting from insulation deterioration.

## Handling of removed battery when disposing



### **DANGER**

**The rechargeable battery is exclusively for use with this appliance. Do not use the battery with other products.**



- Do not throw into fire or apply heat.
- Do not solder, disassemble or modify the battery.
- Do not let the positive and negative terminals of the battery get in contact with each other through metallic objects.
- Do not carry or store the battery together with metallic jewelry such as necklaces and hairpins.
- Never peel off the tube.
- Doing so may cause fluid leak, overheating, or explosion.



### **WARNING**

**After removing the rechargeable battery, do not keep it within reach of children and infants.**



- The battery will harm the body if accidentally swallowed.
- If it happens, consult a physician immediately.

**If the battery fluid leaks out, do not touch the battery with your bare hands.**



- The battery fluid may cause blindness if it comes in contact with your eyes.
- Do not rub your eyes. Wash immediately with clean water and consult a physician.
- The battery fluid may cause inflammation or injury if it comes in contact with the skin or clothes.
- Wash it off thoroughly with clean water and consult a physician.

## Intended use

- This WET/DRY shaver can be used for wet shaving using shaving lather or for dry shaving. You can use this watertight shaver in the shower and clean with water. The following symbol means suitable for use in a bath or shower.



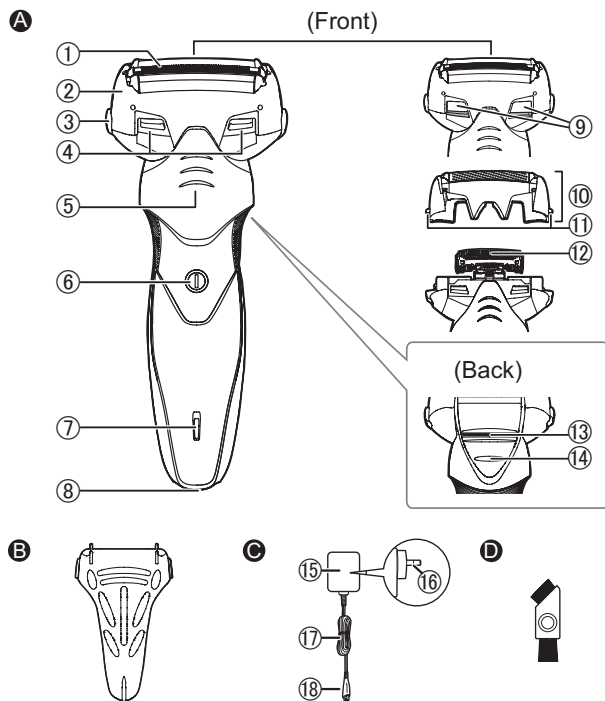
### ► Notes

- Treat yourself to wet lather shaves for at least three weeks and notice the difference. Your Panasonic WET/DRY shaver requires a little time to get used to because your skin and beard need about a month to adjust to any new shaving method.
- Do not bring the system outer foil into contact with hard object.  
Doing so may damage the blades as they are very thin and deform easily.
- Do not dry the main unit with a dryer or a fan heater.  
Doing so may cause malfunction or deformation of the parts.
- Do not leave the shaver exposed to direct sunlight with the foil frame detached.  
Doing so may deteriorate the waterproof rubber and degrade waterproof function, which may cause to malfunction.
- Store the shaver in a place with low humidity after use.  
Failure to do so may cause malfunction due to condensation or rust.
- Keep both the inner blades inserted. If only one of the inner blades is inserted, the shaver may be damaged.
- If you clean the shaver with water, do not use salt water or hot water. Do not soak the shaver in water for a long period of time.

- The following symbol indicates that a specific detachable power supply unit is required for connecting the electrical appliance to the supply mains. The type reference of power supply unit is marked near the symbol.



# Parts identification



## A Main body

- ① System outer foil
- ② Foil frame
- ③ Foil frame release buttons
- ④ Cleaning shutter
- ⑤ Finger rest
- ⑥ Power switch
- ⑦ Charge status lamp (→)
- ⑧ Appliance socket
- ⑨ Water inlet
- ⑩ Outer foil section
- ⑪ System outer foil release buttons
- ⑫ Inner blades
- ⑬ Trimmer
- ⑭ Trimmer handle

## B Carrying holder

## C AC adaptor (RE7-92)

- ⑮ Adaptor
- ⑯ Power plug
- ⑰ Power cord
- ⑱ Appliance plug

## Accessory

## D Cleaning brush

## Using the carrying holder

The shaver can be kept vertically or horizontally. When transporting the shaver, you can use the carrying holder to protect the outer foil and prevent erroneous operation of the switch.

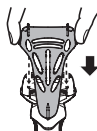
- When transporting the shaver, be sure to clean off any shavings before attaching the carrying holder.



### Attaching the carrying holder

Attach the carrying holder as illustrated.

- Check that all four protrusions on the shaver are inserted securely.



### Removing the carrying holder

Remove the carrying holder while pressing down on both sides.



## Charging

- Turn the shaver off before inserting.
- Wipe off any water droplets on the appliance socket.

### 1. Insert the appliance plug into the shaver.

Align the appliance plug (Δ) with the appliance plug socket triangle mark (Δ) and insert the appliance plug.

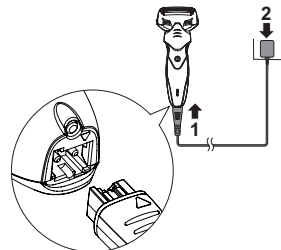
### 2. Plug the adaptor into a household outlet.

- Make sure that the charge status lamp (→) is on in red.
- The charge status lamp (→) glows and stays on until the plug is disconnected from a household outlet.
- The charging time differs depending on the rated voltage. (See page 13.)

### 3. Disconnect the adaptor after charging is completed.

#### Note

You cannot operate the shaver while charging.





## While charging

### Charging in progress

The charge status lamp (→) stays on in red.



### Charging complete

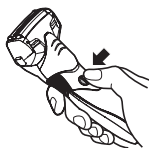
The charge status lamp (→) remains on in red after charging is completed.



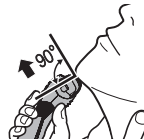
### ► Notes

- To keep charging the battery will not affect battery performance.
- If there is noise from the radio or other sources while using or charging the product, move to a different location to use the product.
- When the appliance is not used for 6 months or more, the battery will weaken (leak battery fluid, etc.). Fully charge the battery once every 6 months.
- Recommended ambient temperature for charging is 0 °C - 35 °C. Battery performance may decrease under extremely low or high temperatures.
- When charging the shaver for the first time or when it has not been in use for more than 6 months, the lamp on the main body may not glow for a few minutes, or the operating time may shorten. Please charge it for more than 18 hours in such cases.
- You can charge the battery before it is completely discharged. However, it is recommended to charge when the battery is completely discharged. The battery life depends strongly on factors such as how it is used and stored.

## How to use



**1 Press the power switch.**



**2 Hold the shaver as illustrated above and shave.**

Start shaving by applying gentle pressure to your face. Stretch your skin with your free hand and move the shaver back and forth in the direction of your beard. You may gently increase the amount of pressure as your skin becomes accustomed to this shaver. Applying excessive pressure does not provide a closer shave.

You can also use a pen grip to hold the shaver.



- A full charge will supply enough power for approx. 7 shaves based on one 3-minute dry-shave use per day. (This will differ depending on usage.) (Based on dry use at 20 - 30 °C.)

### ► Notes

- The appliance may not operate in an ambient temperature approximately 0 °C or lower.
- Before shaving, check that the cleaning shutter is closed.
- Do not place your fingers on the power switch while using the shaver. This may cause the shaver to turn off.
- Do not use shaving creams or face cleansers containing scrubbing compounds as these may cause the outer foil to clog.

### ► Using the trimmer

Slide the trimmer handle up to open the trimmer. Place the trimmer at a right angle (90 degree) to your skin and move downwards to trim your sideburns.



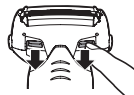
## Cleaning

1. Remove the shaver from the AC adaptor.
2. Apply some hand soap and some water to the outer foil.
  - Close the cleaning shutter.
3. Turn the shaver on.

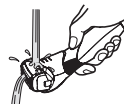


### To remove light dirt

4. Slide the cleaning shutter until it clicks.



5. Clean the outer foil section with running water.



6. Turn the shaver off.

- Rinse with water and shake up and down several times to remove the water.

### For heavy dirt

4. Turn the shaver off after 10 - 20 seconds.



5. Remove the outer foil section and turn the shaver on.



6. Clean the shaver and the outer foil section with running water.



- Rinse with water and shake up and down several times to remove the water.

- Be careful not to hit the main body on the sink or any other object while draining the water. Failure to do so may cause malfunction.

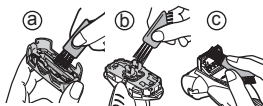
7. Wipe off any drops of water with a dry cloth.
8. Dry the outer foil section and the shaver completely in a shaded area.
9. Attach the outer foil section to the shaver.



## Cleaning with the brush

### ► Cleaning with the long brush

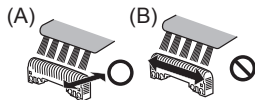
Clean the system outer foil (a), the shaver body (b) and the trimmer (c) using the long brush.



### ► Cleaning with the short brush

Clean the inner blades using the short brush by moving it in direction (A).

- Do not move the short brush in direction (B) as it will damage the inner blades and affect their sharpness.
- Do not use the short brush to clean the system outer foil.



## Replacing the system outer foil and the inner blades

system outer foil	once every year
inner blades	once every two years

- **Removing the outer foil section**  
Press the foil frame release buttons and lift the outer foil section upwards.



- **Attaching the outer foil section**  
After turning the water inlet surface to the front, securely attach the outer foil section to the shaver until it clicks.



### ► Replacing the system outer foil

1. Press the system outer foil release buttons and pull down the system outer foil.
2. Align the front side of the foil frame with the system outer foil mark (Δ) and insert them firmly together.
  - The system outer foil cannot be reversely attached.
  - Always insert the system outer foil to the foil frame when attaching to the shaver.



### ► Replacing the inner blades

1. Remove the inner blades one at a time.
  - Do not touch the edges (metal parts) of the inner blades to prevent injury to your hand.
2. Insert the inner blades one at a time until they click.



## Replacement parts

Replacement parts are available at your dealer or Service Center.

Replacement parts for ES-SL33	System outer foil	WES9087
	Inner blades	WES9068

## Troubleshooting

Problem	Action
Trimmed hairs fly all over.	<ul style="list-style-type: none"> <li>▶ This can be improved by cleaning every time after shaving.</li> <li>▶ Clean the blades with the brush.</li> </ul>
System outer foil gets hot.	<ul style="list-style-type: none"> <li>▶ Replace the system outer foil if it is damaged or deformed. (See page 11.)</li> </ul>
The blades do not dry.	<ul style="list-style-type: none"> <li>▶ The blades may not dry quickly due to temperature conditions.</li> <li>▶ The blades can be dried more easily by removing for drying.</li> </ul>
The odor is getting stronger.	<ul style="list-style-type: none"> <li>▶ This can be improved by cleaning every time after shaving.</li> </ul>
You do not get as close a shave as before.	<ul style="list-style-type: none"> <li>▶ This can be improved by cleaning every time after shaving.</li> <li>▶ Replace the system outer foil and/or inner blades. Expected life of system outer foil and inner blades: System outer foil:     Approximately 1 year Inner blades:     Approximately 2 years</li> </ul>

Problem	Action
Makes a loud sound.	<ul style="list-style-type: none"> <li>▶ Confirm that the blades are properly attached.</li> </ul>
The shaver cannot be charged.	<ul style="list-style-type: none"> <li>▶ Recommended ambient temperature for charging is 0 °C - 35 °C. Battery performance may decrease outside of the recommended temperature.</li> </ul>
Operating time is short even after charging.	<ul style="list-style-type: none"> <li>▶ When the number of operations per charge starts to decrease, the battery is nearing the end of its life.</li> <li>▶ This can be improved by cleaning every time after shaving.</li> </ul>
Shaver stopped functioning.	<ul style="list-style-type: none"> <li>▶ Use the appliance in an ambient temperature approximately 0 °C or higher.</li> <li>▶ The battery has reached the end of its life.</li> </ul>

If the problems still cannot be solved, contact the store where you purchased the unit or a service center authorized by Panasonic for repair.

## Battery life

The life of the battery is 3 years. The battery in this shaver is not intended to be replaced by consumers. Have the battery replaced by an authorized service center.

## Removing the built-in rechargeable battery

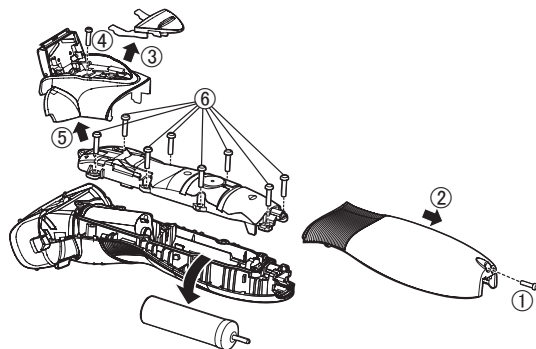
**Remove the built-in rechargeable battery before disposing of the appliance.**

Please make sure that the battery is disposed of at an officially designated location if there is one.

This figure must only be used when disposing of the appliance, and must not be used to repair it. If you dismantle the appliance yourself, it will no longer be waterproof, which may cause it to malfunction.

- Disconnect the power cord from the shaver when removing the batteries.
- Press the power switch to turn on the power and then keep the power on until the battery is completely discharged.
- You are suggested to seek suggestions from the dealer or authorized service center before deciding to dispose of the product, and manage to prolong its service life.
- When you have decided to dispose of this product but do not want to disassemble it and take out the battery, you are suggested to send this product to the authorized service center, where the battery will be decomposed of and recycled.
- The battery must be disposed of at the place designated by the government or recycling organization.
- Perform steps ① to ⑥ and lift the batteries, and then remove them.

- Take care not to short circuit the positive and negative terminals of the removed battery, and insulate the terminals by applying tape to them.



### For environmental protection and recycling of materials

This appliance contains a Nickel-Metal Hydride battery.

Please make sure that the battery is disposed of at an officially assigned location, if there is one in your country.

## Specifications

Power source	See the name plate on the AC adaptor.	
Motor voltage	1.2 V ---	
Charging time	230 V~	Approx. 10 hours
	240 V~	Approx. 8 hours

This product is intended for household use only.

## This image shows a blank sheet of white paper with horizontal ruling lines. The lines are evenly spaced and run across the width of the page. There are no margins, text, or other markings on the paper.

## This image shows a single sheet of white paper with horizontal ruling lines. The lines are evenly spaced and run across the width of the page. There are no margins, text, or other markings on the paper.

Panasonic Corporation  
<http://www.panasonic.com>  
© Panasonic Corporation 2017