

Panasonic

Panasonic
Beauty

NATURAL BEAUTY. INNOVATIVE TECHNOLOGY. BEAUTY & PERSONAL CARE APPLIANCES



**JAPAN
QUALITY**

TRUSTED FOR OVER
100 YEARS

CONTENTS

Hair Dryers

- nanoe™ Moisture+ and Mineral Hair Dryer
- nanoe™ Hair Dryers
- Ionity Hair Dryers
- Standard Hair Dryers

Hairstyling

- Hair Straighteners
- Hair Stylers
- Hair Curler
- Ionity Hair Brush

Women's Personal Care Products

- Bikini Trimmer
- Facial Shaver

Men's Grooming Products

- Shavers
- Trimmers & Clipper



Hair Dryers

Stronger hair
from root to tip.



nanocare

nanoe™ MOISTURE+ and Mineral Technology Hair Dryer



EH-NA0J



**JAPAN
QUALITY**
TRUSTED FOR OVER
100 YEARS



nanoe™
MOISTURE+

Reasons to choose:

- 1 Long Lasting Color & Moisture**
Keeps hair color long-lasting and reduce hair dryness with nanoe™ MOISTURE+ and Mineral Technology
- 2 Healthy Scalp & Skin**
Helps in making the scalp and skin healthier with the dedicated care modes
- 3 Overheat Protection**
 - Heat damage care with intelligent sensing
 - Hot/Cold/Hot & Cold alternating
 - Hair Tip Care / Scalp Care / Skin Care
- 4 Fast-Drying**
Improves the efficiency of airflow inside the main body
- 5 Sleek Premium Design**
Premium and compact design with several attachments

Four Attachments for Versatility and Style



Built-in quick-dry nozzle

Unravel damp strands and dry your hair swiftly with quick-dry nozzle that emits varying the air pressure levels.



Set nozzle

Effortlessly focus on precise areas with a wide and gentle airflow. Perfect for hairstyling.



Diffuser

Boost your curls and waves with the diffuser. Its gentle and ample airflow adds volume from the roots, while the rounded tips on the long prongs make styling effortless and gentle on your scalp.



Air boost nozzle

A focused airflow that reaches the roots of your hair. Ideal for individuals with thick hair or those with hard-to-dry roots.





nanoe™ MOISTURE+ and Mineral Technology

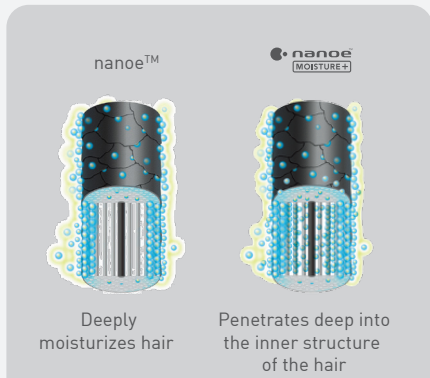
Technology

Panasonic's nanoe™ MOISTURE+ Technology delivers ultra-fine water particles deep into hair, enhancing moisture retention and improving smoothness and shine.

Mineral Technology helps protect hair from damage caused by brushing and UV rays, preserving hair strength and reducing split ends.

Generates
18x more moisture level than previous model, ensuring your hair, scalp, and skin are well-hydrated with every use.

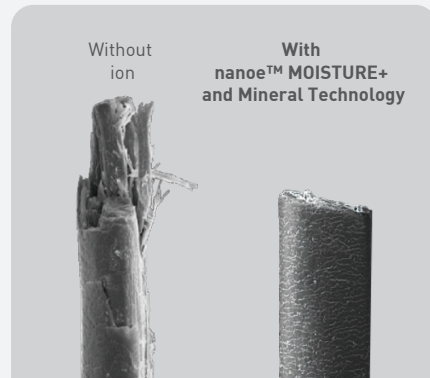
Benefits of nanoe™ Moisture+ and Mineral Technology



Deeply moisturizes the inner structure by allowing frizz-free hair



Long-lasting hair color and improves cuticle adhesion



Reduces split ends



Provides moisture for scalp and skin



Minimizes friction damage from brushing of hair



Enhances hair's resistance to UV damage

nanocare

nanoe™ and Mineral ion Hair Dryer



EH-NA9M



**JAPAN
QUALITY**
TRUSTED FOR OVER
100 YEARS



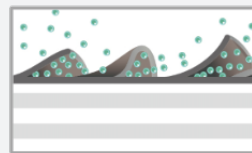
Concentrator nozzle

Reasons to choose:

- 1 Healthy and Beautiful Hair**
- 2 Variously Modes to Care for Hair, Scalp and Skin**
Hot & Cold Alternating/Hair Tip Care/Scalp Care/Skin Care
- 3 Intelligent Sensing**
Prevents hair from overheating
- 4 Fast-Drying**
Improves the efficiency of airflow inside the main body
- 5 Compact Design and Effortless Control**
With intuitive thumb-friendly buttons

What is nanoe™ and Mineral ion?

nanoe™ and Mineral ion firmly tighten the cuticle and create beautiful, damage-resistant hair. By increasing the adhesiveness of the cuticle, they reduce friction damage from brushing as well as damage from external stimuli such as ultraviolet rays.

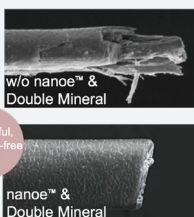


*Mineral ion sticks to cuticles and makes them hard to peel off by acting like an adhesive.

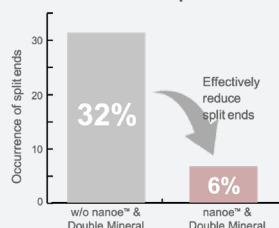
Benefits of nanoe™ & Mineral ion

1. Help hair better resist friction damage

Comparison of hair ends



Reduction in occurrence of split ends

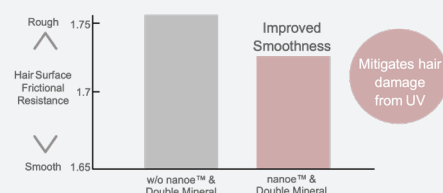


Friction from brushing damages hair. nanoe™ and Mineral ion tighten the cuticles and reduce friction damage to hair such as split ends.

2. Make hair UV-resilient and healthy

Reduction in friction to surface of hair*

*Comparison of frictional resistance to hair surface after six months of exposure to UV rays



Hair is also exposed to the elements just like our face and skin, yet we tend to neglect the UV care it needs. nanoe™ and Mineral ion tighten the cuticles and reduce the damage to hair from UV rays.

nanocare

nanoe™ Hair Dryers



EH-NA7M



**JAPAN
QUALITY**
TRUSTED FOR OVER
100 YEARS

nanoe™

Concentrator Nozzle

Reasons to choose:

- 1 nanoe™ for Healthy and Beautiful Hair
- 2 Fast-Drying
- 3 Foldable Design



EH-NA27



**JAPAN
QUALITY**
TRUSTED FOR OVER
100 YEARS

nanoe™

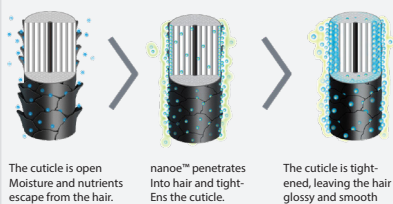
Concentrator Nozzle

What is nanoe™ ?

nanoe™ refers to invisible, ultra-fine water particles containing a lot of moisture. nanoe™ draws moisture from the air to create tiny, moisture-rich particles that penetrate the shafts of your hair. It enhances hair's smoothness and shine.

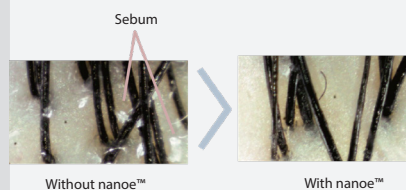
Benefits of nanoe™

1. Moisturises and smoothens hair



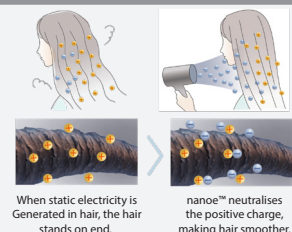
Moisture penetrates into hair and tightens cuticles, making hair healthy and beautiful.

2. Provides scalp care



nanoe™ moisturizes scalp to keep it healthy, preventing the dryness that causes damage to hair. nanoe™ also makes it easier for water to mix with sebum for better removal when washing.

3. Suppresses static electricity



It suppresses static electricity to tame flyaway hair, making it manageable and frizz-free.

ionity

Ionity Hair Dryers



EH-NE86

**JAPAN
QUALITY**
TRUSTED FOR OVER
100 YEARS

Reasons to choose:

- 1 Super Fast-Drying with 2500W* Power**
Air boost nozzle and high wattage motor delivers high pressure air
- 2 Salon Blowouts with Shiny and Silky Hair**
Professional heat protection mode:
 - . Gentle temperature to prevent hair and scalp from overheating
 - . Automatically controls the hot and cool alternating air flow, like a salon blowout
- 3 2x More Ions* for Frizz-Free, Shiny Hair**
2x more ions coat the hair surface and reduce static electricity



EH-NE66

**JAPAN
QUALITY**
TRUSTED FOR OVER
100 YEARS

Reasons to choose:

- 1 Powerful Fast-Drying**
2300W of drying performance* with 2000W energy use
- 2 Enriching & Gentle Protection**
 - . Ion conditioning with moisture retaining design (EH-NE66 only)
 - . Heat protection mode to protect hair and scalp from the heat damage
- 3 Precise & Perfect Styling**
11 mm concentrator nozzle



EH-NE27

**JAPAN
QUALITY**
TRUSTED FOR OVER
100 YEARS

Reasons to choose:

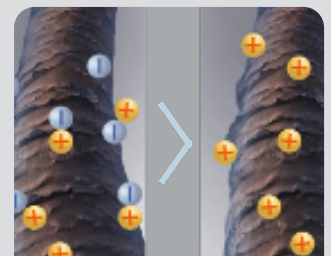
- 1 Fast-Drying in a Compact Body**
Generates 2000W of drying power* with 1800W energy use
- 2 Smooth & Silky Finish with ion Technology**
Coats the hair surface and reduces static electricity
- 3 Heat Damage Care for Hair and Scalp**
Scalp Care Mode/Heat Protection Mode
Thoroughly dries your hair and scalp comfortably, preventing damage from overheating.

Ionity Technology

Reduce static and smoothen your hair.



1. Ion smoothen hair
It coats the hair surface with ions.



2. Static ions neutralize a positive electrical charge

Hair naturally carries a positive electrical charge which can cause strands to repel each other and stand on end. By releasing ions that neutralize this charge, static electricity is reduced, leaving the hair calmer, smoother, and more manageable.



Standard Hair Dryers



EH-ND65



**JAPAN
QUALITY**
TRUSTED FOR OVER
100 YEARS

Reasons to choose:

- 1 Powerful Fast-Drying**
2300W of drying performance*
with 2000W energy use
- 2 Gentle Protection**
Heat protection mode to protect hair
and scalp from the heat damage
- 3 Precise & Perfect Styling**
11 mm concentrator nozzle



EH-ND37



**JAPAN
QUALITY**
TRUSTED FOR OVER
100 YEARS

Reasons to choose:

- 1 Fast-Drying in a Compact Body**
Generates 2000W of drying power*
with 1800W energy use
- 2 Heat Damage Care for Hair and Scalp**
Scalp Care Mode/Heat Protection Mode
Thoroughly dries your hair and scalp comfortably,
preventing damage from overheating
- 3 Cool Shot**
Cold air for fixing your hair in place



EH-ND57



**JAPAN
QUALITY**
TRUSTED FOR OVER
100 YEARS

Reasons to choose:

- 1 Super Quiet Operation**
(55dB at SET mode)
- 2 Two (2) selectable temperature
and three (3) airflow Settings**
- 3 Foldable and Compact Design**



EH-ND21



**JAPAN
QUALITY**
TRUSTED FOR OVER
100 YEARS

Reasons to choose:

- 1 Quick-Dry Nozzle**
- 2 Three (3) Speed Selections**
- 3 Foldable Handle**



Specifications

| | |  |  | | | ionity |
|----------|---------------------------|--|--|---|--|--|
| IMAGE | |  |  |  |  |  |
| | Model | EH-NA0J | EH-NA9M | EH-NA7M | EH-NA27 | EH-NE86 |
| OVERALL | Care Level | Intensive Care | Extra Care | Daily Care | Daily Care | - |
| | Technology | nanoe™ MOISTURE+ and Mineral ion | nanoe™ and Mineral Ion | nanoe™ | nanoe™ | Ionity x 2 |
| | Moisture Level | ●●●●● | ●●● | ●●● | ●● | - |
| | Drying Power | 1600W | 1600W | 1600W | 1500W | 2500W |
| | Wattage | 1600W | 1600W | 1600W | 1200W | 2300W |
| CARE | Hair Care | ✓ | ✓ | ✓ | ✓ | ✓ |
| | Scalp Care | ✓ | ✓ | - | ✓ | ✓ |
| | Skin Care | ✓ | ✓ | - | - | - |
| BENEFITS | Shiny and Silky Hair | ✓ | ✓ | ✓ | ✓ | ✓ |
| | Friction Damage Reduction | ✓ | ✓ | ✓ | ✓ | - |
| | Split Ends Reduction | ✓ | ✓ | - | - | - |
| | Overheating Prevention | ✓ | ✓ | - | - | ✓ |
| | Color Fading Prevention | ✓ | - | - | - | - |
| | UV Protection | ✓ | ✓ | - | - | - |
| | Fast Drying | ✓ | - | - | - | ✓ |
| | Silent Mode | - | - | - | - | - |
| OTHERS | Foldable | - | - | ✓ | ✓ | - |
| | Attachments | Set Nozzle Air Boost Nozzle Diffuser Built-in Quick Nozzle | Concentrator Nozzle Built-in Quick Nozzle | Concentrator Nozzle Built-in Quick Nozzle | Built-in Quick Nozzle | Air Boost Nozzle Diffuser Concentrator Nozzle |



Specifications

| ionity | | Standard Hair Dryers | | | |
|--|--|--|---|--|--|
|  |  |  |  |  |  |
| EH-NE66 | EH-NE27 | EH-ND65 | EH-ND57 | EH-ND37 | EH-ND21 |
| - | - | - | - | - | - |
| Ionity | Ionity | - | - | - | - |
| - | - | - | - | - | - |
| 2300W | 2000W | 2300W | 1500W | 2000W | 1200W |
| 2000W | 1800W | 2000W | 1500W | 1800W | 1200W |
| ✓ | ✓ | - | - | - | - |
| ✓ | ✓ | - | - | - | - |
| - | - | - | - | - | - |
| ✓ | ✓ | - | - | - | - |
| - | - | - | - | - | - |
| - | - | - | - | - | - |
| ✓ | ✓ | ✓ | - | ✓ | - |
| - | - | - | - | - | - |
| - | - | - | - | - | - |
| ✓ | ✓ | ✓ | - | - | - |
| - | - | - | ✓ | - | - |
| ✓ | ✓ | ✓ | ✓ | ✓ | ✓ |
| Concentrator Nozzle | Set Nozzle | Concentrator Nozzle | Set Nozzle | Set Nozzle | Set Nozzle |



Specifications

| | | ionity | | Standard Hair Dryers | | | |
|----------|---------------------------|--|--|--|---|--|--|
| IMAGE | |  |  |  |  |  |  |
| | Model | EH-NE66 | EH-NE27 | EH-ND65 | EH-ND57 | EH-ND37 | EH-ND21 |
| OVERALL | Care Level | - | - | - | - | - | - |
| | Technology | Ionity | Ionity | - | - | - | - |
| | Moisture Level | - | - | - | - | - | - |
| | Drying Power | 2300W | 2000W | 2300W | 1500W | 2000W | 1200W |
| | Wattage | 2000W | 1800W | 2000W | 1500W | 1800W | 1200W |
| CARE | Hair Care | ✓ | ✓ | - | - | - | - |
| | Scalp Care | ✓ | ✓ | - | - | - | - |
| | Skin Care | - | - | - | - | - | - |
| BENEFITS | Shiny and Silky Hair | ✓ | ✓ | - | - | - | - |
| | Friction Damage Reduction | - | - | - | - | - | - |
| | Split Ends Reduction | - | - | - | - | - | - |
| | Overheating Prevention | ✓ | ✓ | ✓ | - | ✓ | - |
| | Color Fading Prevention | - | - | - | - | - | - |
| | UV Protection | - | - | - | - | - | - |
| | Fast-Drying | ✓ | ✓ | ✓ | - | - | - |
| | Silent Mode | - | - | - | ✓ | - | - |
| OTHERS | Foldable | ✓ | ✓ | ✓ | ✓ | ✓ | ✓ |
| | Attachments | Concentrator Nozzle | Set Nozzle | Concentrator Nozzle | Set Nozzle | Set Nozzle | Set Nozzle |

Hairstyling

Effortless Salon-Style
Hair Setting



nanocare

nanoe™ Hair Straighteners



EH-HS99



**JAPAN
QUALITY**
TRUSTED FOR OVER
100 YEARS



Reasons to choose:

- 1 Ultimate Styling Results**
 - 230°C maximum temperature
 - Even heat distribution
 - Advanced stable heater
- 2 Smooth and Shiny Hair**
 - nanoe™ Technology
 - Photo ceramic plate
- 3 Superb Usability**
 - Ergonomic design for an easier grip
 - Designed for smooth styling
 - Relevant tension applied to hair



Advanced Smooth Ceramic Plate

Achieve straight and shiny hair with nanoe™ Technology that adds moisture as you straighten it.



Standard Hair Straighteners

EH-HV21



**JAPAN
QUALITY**
TRUSTED FOR OVER
100 YEARS



Reasons to choose:

Fast-straightening & long-lasting curls
with Keratin & Botanical Oil Infusion

- 1 Even Heat Distribution Plate**
For fast and long lasting results
- 2 Keratin & Botanical Oil Infused**
Ceramic plate
- 3 230°C**
Maximum temperature

EH-HV11



**JAPAN
QUALITY**
TRUSTED FOR OVER
100 YEARS



Reasons to choose:

Easy straightening & curling anywhere,
anytime with Keratin & Botanical Oil Infusion

- 1 Keratin & Botanical Oil Infused**
Ceramic plate
- 2 Compact Size and Storage Cap**
For on-the-go
- 3 210°C**
Maximum temperature

Specifications

Hair Straighteners

| IMAGE | | | | |
|----------|--------------------------|---|---|---|
| | Model | EH-HS99 | EH-HV21 | EH-HV11 |
| OVERALL | Maximum Temperature | 230°C | 230°C | 210°C |
| | Technology | nanoe™ | - | - |
| | Temperature Settings | Five (5) Settings (230/200/180/170/150) | Three (3) Settings (230/200/180) | Off-210°C |
| | Plate Material | Photo Ceramic Plate | Keratin and Botanical Oil Infused Ceramic Plate | Keratin and Coconut Oil Infused Ceramic Plate |
| BENEFITS | Ultimate Styling Results | ✓ | ✓ | - |
| | Smooth and Shiny Hair | ✓ | ✓ | ✓ |
| | Quick Styling | ✓ | ✓ | - |
| | Safe Function | ✓ | ✓ | - |
| | Auto Shut-off | ✓ | = | = |
| | Maximum Temperature | ✓ | ✓ | ✓ |

Hair Stylers

7 in 1 **EH-KA71**

3 in 1 **EH-KA31**

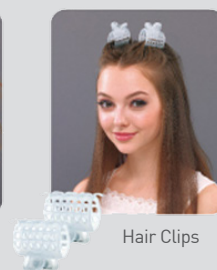
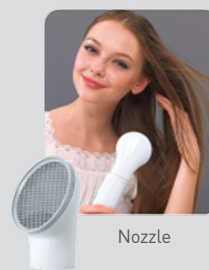
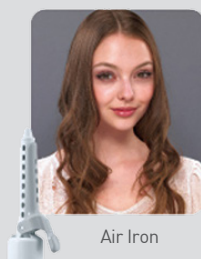
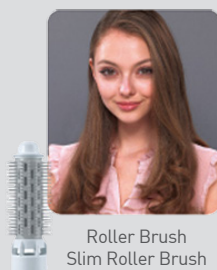
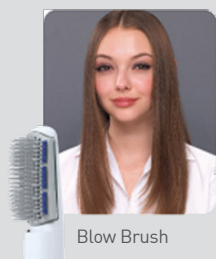


**JAPAN
QUALITY**
TRUSTED FOR OVER
100 YEARS

Reasons to choose:

- 1 Enjoy a Wide Range of Style**
Easily create any hairstyle with a single styler with variety attachments
- 2 Volume Lifter for a Bouncy Finish**
- 3 Blow Brush with Small Comb**
- 4 Silent 59dB Operation**

Features of Attachments



Specifications

Hair Stylers

| IMAGE | Attachments | |
|----------|------------------------|---|
| | EH-KA71 | EH-KA31 |
| Model | EH-KA71 | EH-KA31 |
| OVERALL | Wattage | 650W |
| | Temperature Settings | Three (3) Heat (Cool/Set/Dry Mode) |
| BENEFITS | Wide Range of Styles | ✓ |
| | Overheating Prevention | ✓ |
| | Hair Volumizing | ✓ |
| | Firmness Maintenance | ✓ |
| | Natural Curls | ✓ |
| | Small Curls | ✓ |
| | Dry Hair | ✓ |
| OTHERS | Silent | 59dB |
| | Attachments | Blow Brush, Air Iron, Adjustable Roller Brush, Mini Diffuser, Volume Lifter, Two (2) Hairpins |

Hair Curler



EH-HT40



**JAPAN
QUALITY**
TRUSTED FOR OVER
100 YEARS

Reasons to choose:

Get a more natural feel than a hair straightener.
Enjoy a variety of styles with just one tool.

- 1 Easily Achieve Trendy Large Curls**
 - Soft large curls 32mm
 - Brush-style
- 2 Different Styles with Just One Styling Tool**
 - Change the look of your curls by using the clip
 - Beautiful and long-lasting curls right to the tip
- 3 Safe and Easy to Use**
 - The brushes protect your hands from the hot barrel
 - Adjustable temperature

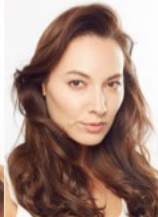
Long Hair



Airy Large Curls
(without clip)



Tight Curls
(with Clip)



Volume
at the Crown



Natural Straight

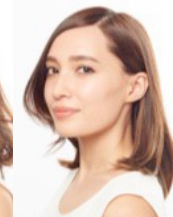
Bob Style



Large Curl Bob
(without Clip)



Tight Curl Bob
(with Clip)



Front Side/
Bangs

Ionity Hairbrush



EH-HE10



**JAPAN
QUALITY**
TRUSTED FOR OVER
100 YEARS

Reasons to choose:

- 1 Frizz-Free and Shiny Hair**
Prevents frizzy and flyaway hair caused by static electricity
- 2 Portable**
Fits in the palm of your hand and conveniently portable
- 3 Clean & Hygienic**
Washable bristles cushion for easy cleaning

Specifications

| Ionity Hairbrush | | |
|------------------|---------------------------------|---------------|
| OVERALL | Technology | Ionity |
| BENEFITS | Frizz Prevention and Shiny Hair | ✓ |
| | Portable | ✓ |
| | Clean & Hygienic | ✓ |
| OTHERS | Battery Type | 1xAAA Battery |
| | Washable | ✓ |

Women's Personal Care



Bikini Trimmer & Shaver



ES-WV62



**JAPAN
QUALITY**
TRUSTED FOR OVER
100 YEARS

Reasons to choose:

- 1 Gentle & Close Shave**
 - Fast and long-lasting results
 - Sharp 45°C trimmer blade
 - Gentle shaver
 - Skin guard attachment for crotch/buttocks
- 2 Quick Shaving with Powerful Motor**
 - Powerful motor even for thick bikini hair
- 3 Waterproof Design**
 - Wet or dry use
 - Washable for easy maintenance

Wet or Dry Use in the bath or in your room

Waterproof body and head let you groom yourself no matter where you are, even in the bath or in your room.



*Using the shaver on dry hair is recommended

Waterproof Design Easy cleaning for a fresh shave

Both the body and head are waterproof and can be washed as it is after usage. You can't go wrong with a clean shaver!



The whole shaver can be washed.



They can be detached before washing.

Features of Attachments

Trimmer Head



The Trimmer Head cuts thick and long hair speedily.

The blade with a sharp 45° edge cuts thick, long hair speedily while the part which touches the skin is rounded for gentle grooming.



0.2mm
Rounded and flattened blade

Bikini Comb



The Bikini Comb lessens the volume easily.

Attach the bikini comb to the trimmer head and glide it with smooth, stroking motions. This helps reduce excess hair while evening out the length, leaving a neat and natural-looking bikini line.



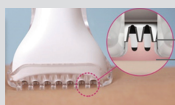
This 6 mm comb lets you trim long hair uniformly.

Skin Guard



The Skin Guard lessens the volume easily.

Worry-free shaving becomes possible with the blade 1 mm away from your skin.



1 mm

Shaver Head



The Shaver Head gives a gentle and smooth shave.

The shaver head ensures a gentle close shave across larger areas, delivering a silky-smooth finish. Its netted construction features wide openings that capture even thick hair, allowing the blade to cut them instantly for a flawless result.



Catches shortened hair



The net with big holes will not miss even thick hair



Cut hair efficiently

Specifications

| Bikini Trimmer | | |
|----------------|---------------------------------|---|
| OVERALL | Rounded | ✓ |
| | Flattened Blade | ✓ |
| | Blade Material | Stainless Steel |
| | Inner Blade Angle | 45° |
| BENEFITS | Quick Shaving | ✓ |
| | Gentle Trimming and Close Shave | ✓ |
| | Convenient | ✓ |
| | Wet/Dry Operation | ✓ |
| OTHERS | Washable | ✓ |
| | Battery Type | One AA Alkaline Battery |
| | Attachments | Trimmer Head Shaver Head Bikini Comb Skin Guards |
| | | |

Outside

Net blade gentle on skin

Big holes catch even thick hair firmly

Inside

Sharp inner blade

Sharp inner blade cuts the hair caught in the holes speedily



Facial Hair Trimmer



ES-WF61

JAPAN QUALITY
TRUSTED FOR OVER 100 YEARS

Reasons to choose:

- 1 Gentle & Efficient Shaving**
Enjoy gentle trimming with the flexible head that pivots 10 degrees to the left and right
- 2 Precise Shaping**
Convenient eyebrow trimmer attachment
 - Eyebrow Comb (2/4/6mm)
 - Precision Cap
- 3 Compact & Portable**
Lightweight and compact for easy-carry

Features of Attachments



Eyebrow Comb
Trim and groom eyebrows with precision snap on the comb attachments (2/4/6 mm).



Precision Cap
Harmlessly shave closer to your eyes with this protection.



Easily shave unwanted hair with the trimmer head - that can pivot 10 degrees to the left and right sides.

Specifications

| Facial Hair Trimmer | | |
|---------------------|---------------------------------|--|
| OVERALL | Rounded | ✓ |
| | Flattened Blade | ✓ |
| | Blade Material | Stainless Steel |
| | Inner Blade Angle | 10° |
| BENEFITS | Quick Shaving | ✓ |
| | Gentle Trimming and Close Shave | ✓ |
| | Convenient | ✓ |
| | Wet/Dry Operation | ✓ |
| OTHER | Wasable | ✓ |
| | Battery Type | One AA Alkaline Battery (not included) |
| | Attachments | Eyebrow Comb, Precision Cap, Protection Cap, Cleaning Brush |



Men's Grooming



Three-Blade Shaver

An electric and waterproof shaver with three durable stainless-steel blades for precise shave everyday



ES-LT2B



**JAPAN
QUALITY**
TRUSTED FOR OVER
100 YEARS

Reasons to choose:

1 Thoroughly Designed Three-Blade System

This unique shaver with three advanced Japanese stainless steel blades is designed for use on all types of beard. It provides a close and comfortable shave every day.

2 Ultra-Fast Linear Motor

With advanced mag-lev technology, the shaver uses the world's strongest magnets to deliver 39,000 cross-cutting actions per minute for impressive results.

3 Responsive Beard Sensor Technology

This boosts power where beard growth is heavy and reduces it in other areas to prevent skin irritation.

4 Floating Blade Mechanism

This moves in three directions independently and follows the contours of the face and neck without needing you to press hard for less skin irritation.

Easy & Convenient to Use



Shaving Foam Mode

Fine movements easily generate foam from liquid soap, making shaving smoother and faster than when done by hand.



Wet or Dry Use

The waterproof design lets you shave dry or with gel or foam, and even while taking a shower. By minimizing the burden on your skin, this assures a smooth, gentle shave every time.



Waterproof/Water Shutters

The waterproof design lets you rinse the shaver under running water for easy and hygienic maintenance. For quick cleaning, open and fill the water inlet on the front of the shaver head with running water for easy rinsing.

Japanese Blade Technology

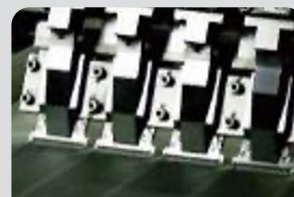
Advancing the Japanese art of making exceptionally sharp and robust swords, Panasonic has applied state-of-the-art technology to develop blades of outstanding quality. Panasonic blades combine time-honored Japanese craftsmanship with advanced engineering for enduring sharpness and precision.



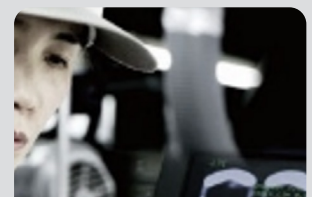
Hammering and shaping steel make it both stronger and more flexible.



Subjecting the steel to high temperatures increase its hardness, durability, and wear-resistance.



Grinding produces a smooth, acute-angle blade with outstanding sharpness.



A stringent inspection process ensures that every blade meets uncompromising quality standards.

**ES-SA40**
**JAPAN
QUALITY**
 TRUSTED FOR OVER
 100 YEARS

Reasons to choose:

- 1 The shaving head rotates smoothly along the face, making the shaving fast and quick without needing much pressure.
- 2 Rechargeable
- 3 Easy-to-Use Design
- 4 Wet/Dry Mode
- 5 Eight (8) Hours Battery Life

**ES3831**
**JAPAN
QUALITY**
 TRUSTED FOR OVER
 100 YEARS

Reasons to choose:

- 1 Battery Operated
- 2 Wet/Dry Mode
- 3 Lightweight and Handy

Specifications

| Shavers | | | | |
|----------|------------------------------|---|--|---|
| IMAGE | |  |  |  |
| | Model | ES-LT2B | ES-SA40 | ES3831 |
| OVERALL | Motor Speed | Approximately 13,000 cpm | 7,800 cpm | 8,500 cpm |
| | Motor Type | Linear | - | - |
| | Blade Type | Three-Blade | One-Blade | One-Blade |
| | Blade Material | Japanese Stainless Steel | Stainless Steel | Stainless Steel Foil |
| | Inner Blade Angle | 45 Nano-Sharpended Blades | 78 | 78 |
| | Flexible Shaver Head | ✓ | - | - |
| | Floating Head | ✓ | ✓ | ✓ |
| | Shaving Sensor | ✓ | - | - |
| BENEFITS | Skin Care | ✓ | - | - |
| | Ultra-Fast | ✓ | - | - |
| | Smooth & Close Out | - | - | - |
| | Durable (Long-Lasting Blade) | ✓ | - | - |
| | Easy-To-Use & Convenient | ✓ | - | - |
| | Charging Time | 1 Hour | 8 Hours | - |
| | Operating Time | 45 Minutes | 21 Minutes | - |
| OTHERS | Battery Type | Li-ion | Li-ion | Two AA Dry-Cell Batteries (DC 3.0 V) (sold separately) |
| | Quick Charge | Three-Minute Quick Charge | - | - |
| | Switch Lock | ✓ | - | - |
| | Wet/Dry Operation | ✓ | ✓ | ✓ |
| | Washable | ✓ | ✓ | ✓ |
| | Pop-up Trimmer | ✓ | ✓ | - |

mengrooming

Trimmer & Clipper

Nose Hair Trimmer



ER-GP80

JAPAN QUALITY
TRUSTED FOR OVER 100 YEARS



ER-GC71

JAPAN QUALITY
TRUSTED FOR OVER 100 YEARS



ER-GN30

JAPAN QUALITY
TRUSTED FOR OVER 100 YEARS

Reasons to choose:

- 1 X-taper blades reduce stubble and cleanly cut hairs that are often missed.
- 2 Sharp 45° blade edge provides smooth and precise cutting.
- 3 New Linear Motor with Constant Control equipped with sensors technology detect hair density.
- 4 Slim and light design

- 1 Precision cutting blade with advanced shape for a faster finish
- 2 Sharp cutting 45° blade edge cuts even thick hair
- 3 39 precise length settings with adjustable dial
- 4 0.5 – 20mm in an interval of 0.5mm

Reasons to choose:

- 1 Dual-Edge Blade
- 2 Hypo-Allergenic Stainless Steel Blades
- 3 Wet/Dry Operation

Specifications

| | | Hair Trimmer | | Nose Trimmer |
|----------|-----------------------|---|--|---|
| IMAGE | |  |  |  |
| | Model | ES-GP80 | ER-GC71 | ER-GN30 |
| OVERALL | Adjustment Dial | 0.8 to 2.0cm in 0.3mm Steps | 38 Precise length Setting | - |
| | Motor Type | Linear Motor | DC Motor | - |
| | Blade Material | X-Taper Blades (Stainless Steel) | Japan Stainless steel | Stainless Steel |
| | Blade Angle | 30° | 45° | - |
| BENEFITS | Charge Indicator Lamp | LED | LED | - |
| | Moveable Blades | ✓ | ✓ | - |
| | Easy Maintenance | ✓ | ✓ | ✓ |
| | Charging Time | Approximately 1 hour | 8 hours | Up to 90 minutes |
| | Operating Time | Approximately 50 minutes | 40 mins | Approximately 50 minutes |
| OTHERS | Battery Type | Li-ion | Li-ion | One AA Alkaline Battery (not included) |
| | Wet/Dry | - | ✓ | ✓ |
| | Washable | - | ✓ | ✓ |
| | Attachments | Without Attachment: 0.5mm 1.0 - 20mm | Comb Attachments 1 - 10mm 11 - 20mm | - |

Panasonic

Branch of Panasonic Asia Pacific Pte. Ltd.

Customer Care Center
#327-329, Sihanouk Blvd, Sangkat Vealvong,
Khan 7 Makara, Phnom Penh, Cambodia
Email: service@kh.panasonic.com
www.panasonic.com/kh/



095 215 503
098 215 503
071 3215 503

SCAN HERE FOR
MORE INFORMATION

