

Appliance

For heavy soil
Neutral kitchen detergent

Do not use gritty cleaners or thinners, or products containing alcohol or paraffin oil.

Lint filter

1 2 3

Check the following before calling for service:

- ☐ Inserted firmly
- ☐ Breaker On
- ☐ Timer On
- ☐ Spinner lid Closed properly
- ☐ No laundry fallen out

Troubleshooting

If the laundry or button is stuck into the pulsator:

Cannot be taken

If the laundry falling from the spin tub:

1 2

Unable to spin

Spin stops when the motor-protective device is activated. Restart after 30 minutes.

Requests

Too much detergent

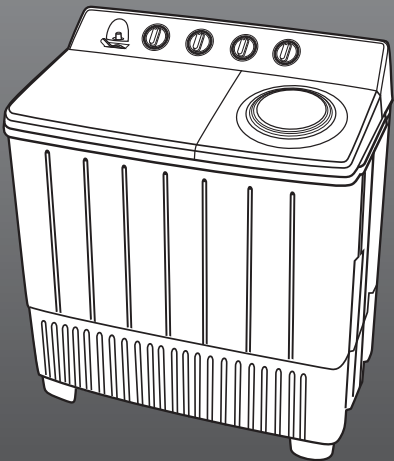
Cover made of vinyl chloride

Too much water

Sprays

Twin-Tub Electric Washing Machine
(Household use)

Model No. NA-W16XG2BMY



Contents

Safety Precautions	2
Part Names	4
Operation Panel	4
Accessories	4
Installation	5
Laundry Preparation and Check	5
Washing Process	6
Maintenance	8
Troubleshooting	8
Requests	8

Thank you for purchasing this product.

- Read these instructions carefully for optimum performance and safety before use.
- Keep this manual for future reference.

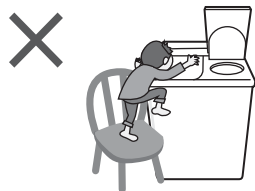
Specifications

Model	NA-W16XG2BMY
Destination	Malaysia
Rated voltage	220-240 V
Rated frequency	50 Hz
Rated power consumption	710W (Wash 500 W, Spin 210 W)
Maximum mass of dry cloth (Wash)	16 kg
Maximum mass of dry cloth (Spin)	8 kg
Standard water amount	105 L
Maximum inlet water pressure	300 kPa
Product dimensions	957 mm(W) × 549 mm(D) × 1045 mm(H)
Product weight	32 kg

Safety Precautions

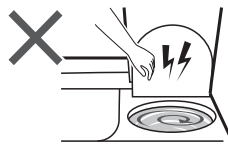
! WARNING May cause serious injury or death.

Children must not use it alone

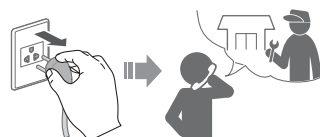


- This appliance is not intended for use by persons (including children) with reduced physical, sensory or mental capabilities, or lack of experience and knowledge, unless they have been given supervision or instruction concerning use of the appliance by a person responsible for their safety.
- Children should be supervised to ensure that they do not play with the appliance.

Do not touch the spin tub until it stops



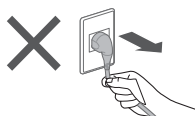
If the spin tub does not stop within 15 sec:



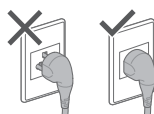
Do not touch it with wet hands



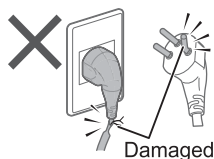
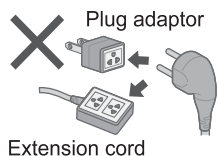
Do not hold or pull on the cord



Fully insert it

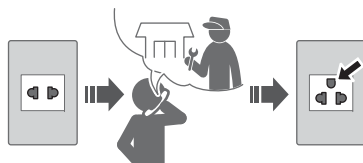


Do not use

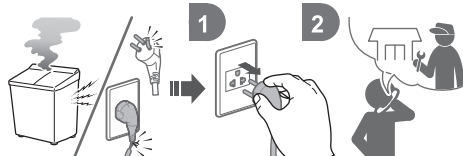


If the power cord is damaged, it must be replaced by the manufacturer, its service agent or similarly qualified persons in order to avoid a hazard.

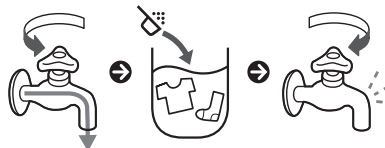
**Securely insert the ground prong.
Ask the electrical technician for a new socket**



**In case of failure or damaged power cord,
stop use and ask the electrical technician**



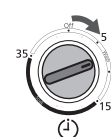
4 To the water level line



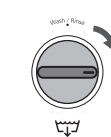
5



6



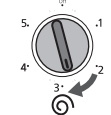
7



4

2-3 min

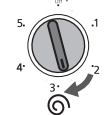
To rinse well



For 1 min

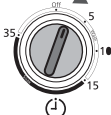


2-3 min



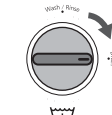
5

2-3 min



6

2-3 min



7

2-3 min

2-3 min

2-3 min

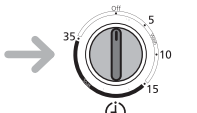
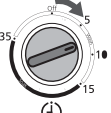
2-3 min

2-3 min

Rinse again.
(1 - 5)

5

5 or 7 min



6

5 or 7 min

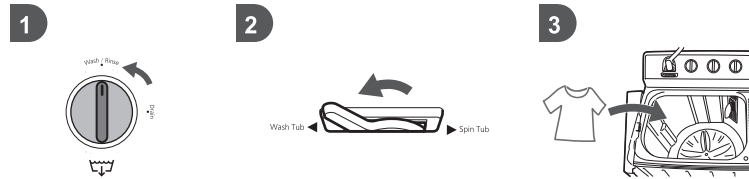


Close the lid of Wash Tub.
Water may splash out from the tub when water supply is too much.

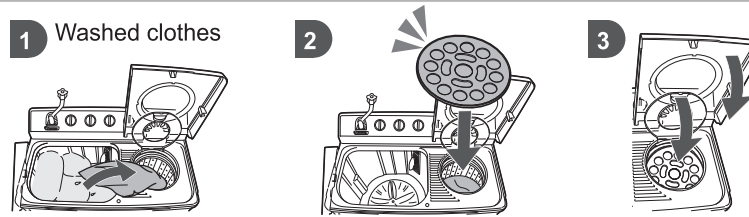


Washing Process

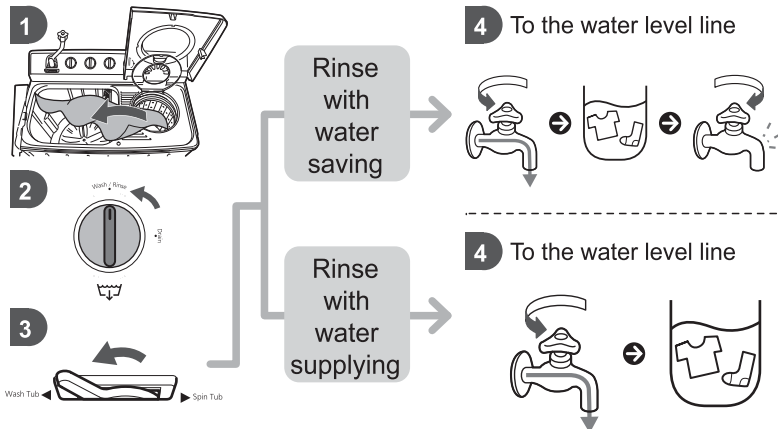
Wash



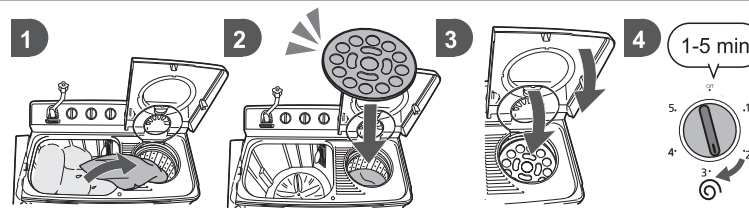
Spin



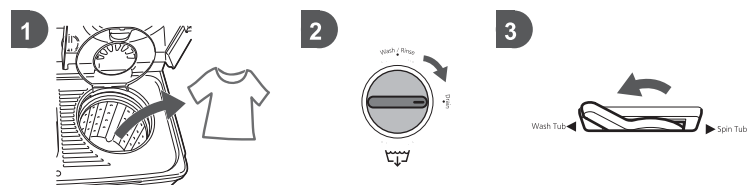
Rinse



Spin

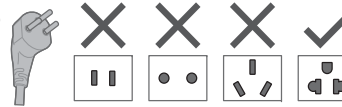


Final Step



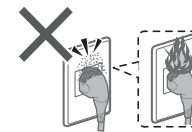
Use a socket appropriate for this appliance

e.g.)



The plug shape, socket shape and rating requirement vary with the region.

Accumulated dust may cause fire



Wipe the power plug periodically



Keep away from flammable materials

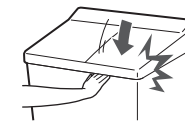


Do not disassemble, repair or modify it by yourself



CAUTION May cause injury or property damage.

Be careful not to get your fingers caught



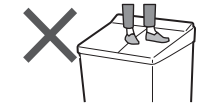
Do not spin waterproof items



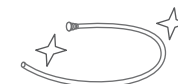
Do not use hot water



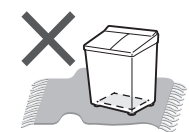
Do not climb on the appliance



Use new hose-sets



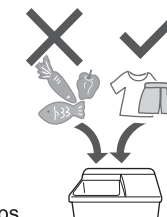
Do not obstruct



For machine-washable items only

This appliance is intended to be used in household. This appliance is not intended to be used in applications such as:

- staff kitchen areas in shops, offices and other working environments;
- farm houses (excluding clothes);
- by clients in hotels, motels and other residential type environments;
- bed and breakfast type environments;
- areas for communal use in blocks of flats or in laundrettes.



New hose-sets supplied with the appliance are to be used and old hose-sets should not be reused.

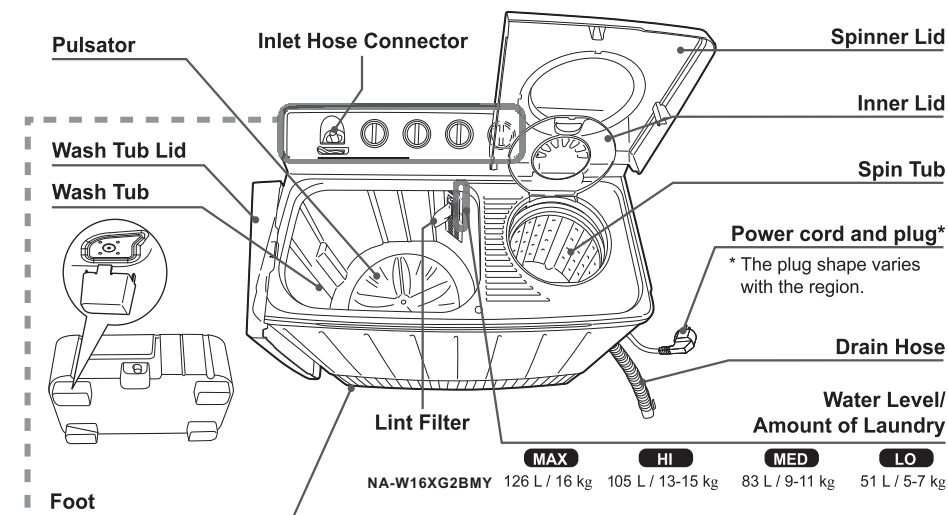
Do not obstruct the openings of the bottom face with carpet, etc.

Handle the appliance carefully

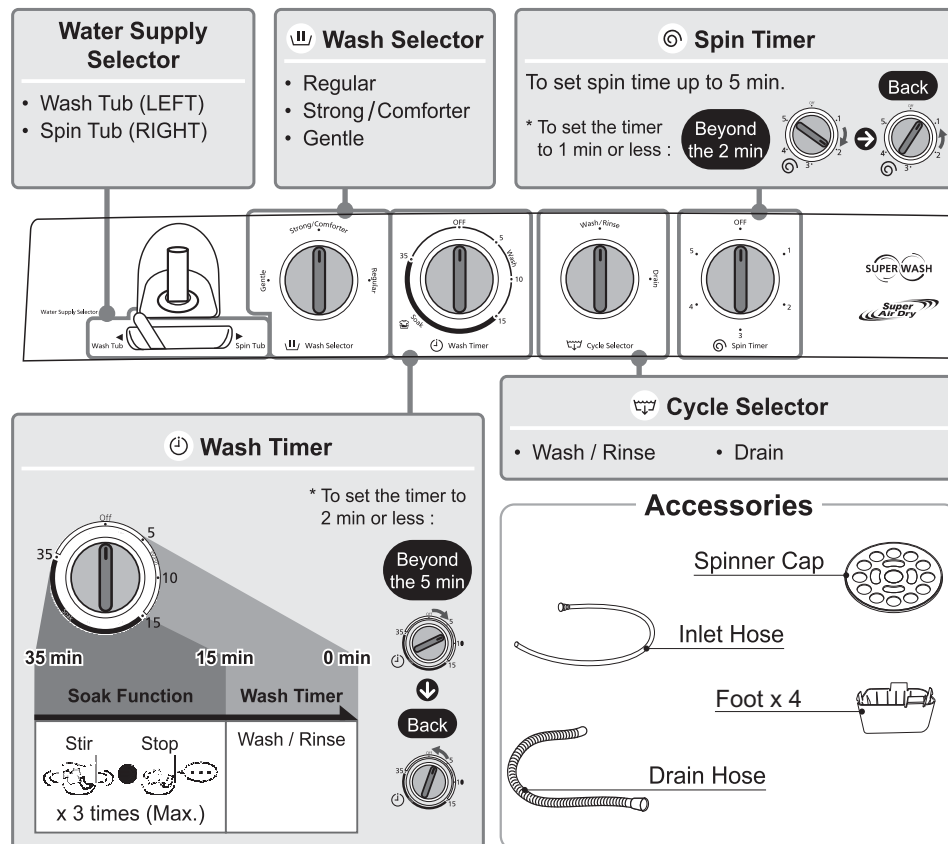


- Unplug and cut off the power.
- Secure parts that can easily come off.

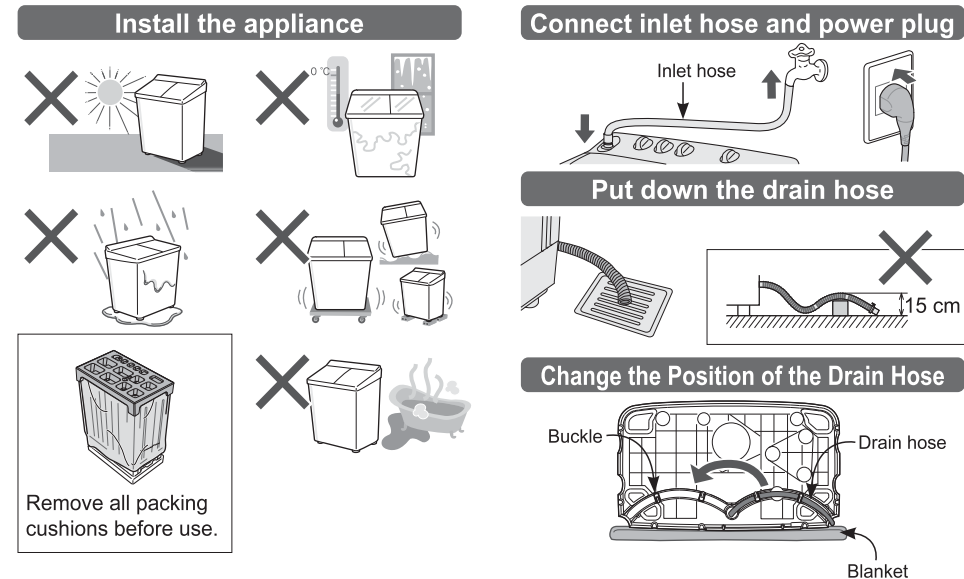
Part Names



Operation Panel



Installation



Laundry Preparation and Check

