

Appliance

For heavy soil
Neutral kitchen detergent

✗

- Do not use gritty cleaners or thinners, or products containing alcohol or paraffin oil.

Lint filter

1 2 3

Check the following before calling for service:

- ☐ Inserted firmly
- ☐ Breaker On
- ☐ Timer On
- ☐ Spinner lid Closed properly
- ☐ No laundry fallen out

Troubleshooting

If the laundry or button is stuck into the pulsator:

Cannot be taken

➔

If the laundry falling from the spin tub:

1 2

Unable to spin

Spin stops when the motor-protective device is activated. Restart after 30 minutes.

Requests

✗

Too much detergent

✗

Cover made of vinyl chloride

✗

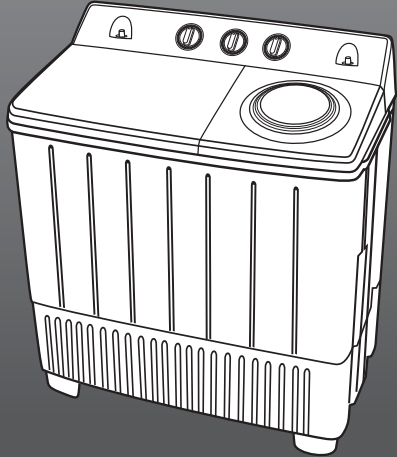
Too much water

✗

Sprays

Twin-Tub Electric Washing Machine
(Household use)

Model No. NA-W85XG2BMY
NA-W85XG2BSG



Contents

Safety Precautions	2
Part Names	4
Operation Panel	4
Accessories	4
Installation	5
Laundry Preparation and Check	5
Washing Process	6
Maintenance	8
Troubleshooting	8
Requests	8

Thank you for purchasing this product.

- Read these instructions carefully for optimum performance and safety before use.
- Keep this manual for future reference.

Specifications

Model	NA-W85XG2BMY	NA-W85XG2BSG
Destination	Malaysia	Singapore(RBD)
Rated voltage	220-240 V	220-240 V
Rated frequency	50 Hz	50 Hz
Rated power consumption	560W (Wash 400 W, Spin 160 W)	560W (Wash 400 W, Spin 160 W)
Maximum mass of dry cloth (Wash)	8.5 kg	8.5 kg
Maximum mass of dry cloth (Spin)	5 kg	5 kg
Standard water amount	75 L	75 L
Maximum inlet water pressure	300 kPa	300 kPa
Product dimensions	796 mm(W) 470 mm(D) 904 mm(H)	796 mm(W) 470 mm(D) 904 mm(H)
Product weight	20.5 kg	20.5 kg

Safety Precautions

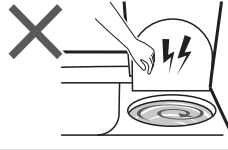
! WARNING May cause serious injury or death.

Children must not use it alone

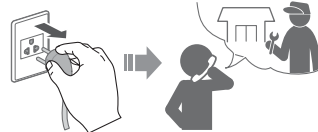


- This appliance is not intended for use by persons (including children) with reduced physical, sensory or mental capabilities, or lack of experience and knowledge, unless they have been given supervision or instruction concerning use of the appliance by a person responsible for their safety.
- Children should be supervised to ensure that they do not play with the appliance.

Do not touch the spin tub until it stops



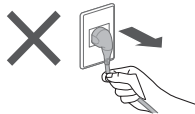
If the spin tub does not stop within 15 sec:



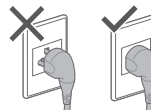
Do not touch it with wet hands



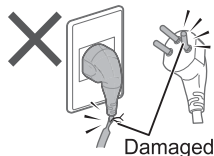
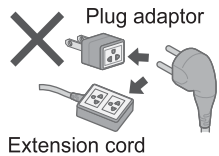
Do not hold or pull on the cord



Fully insert it

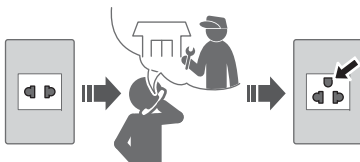


Do not use

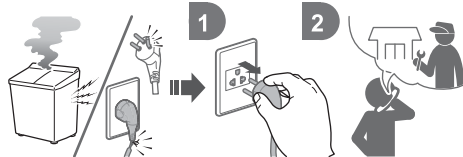


If the power cord is damaged, it must be replaced by the manufacturer, its service agent or similarly qualified persons in order to avoid a hazard.

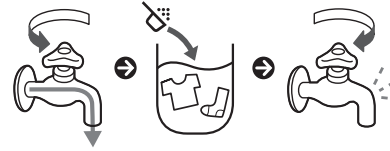
**Securely insert the ground prong.
Ask the electrical technician for a new socket**



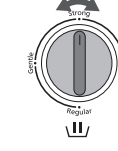
In case of failure or damaged power cord, stop use and ask the electrical technician



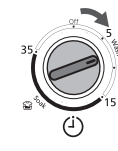
4 To the water level line



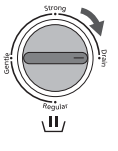
5



6

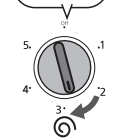


7



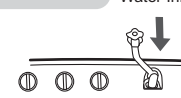
4

2-3 min



To rinse well

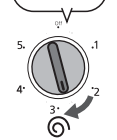
Water Inlet(Spin)



For 1 min

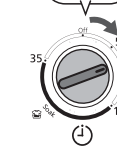


2-3 min

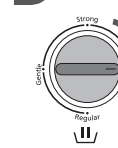


5

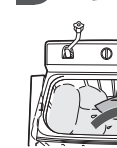
2-3 min



6

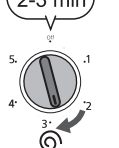


7



8

2-3 min

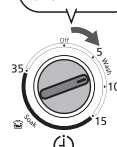


9

Rinse again.
(1 - 5)

5

5 or 7 min



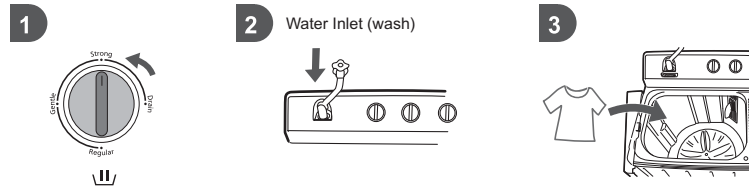
6



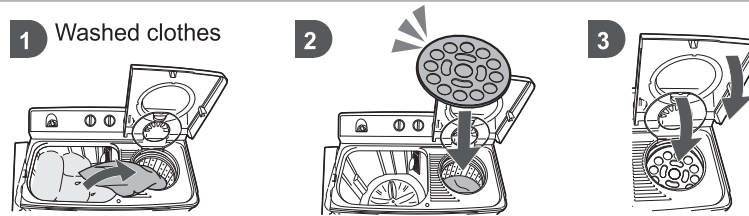
Close the lid of Wash Tub.
Water may splash out from the tub when water supply is too much.

Washing Process

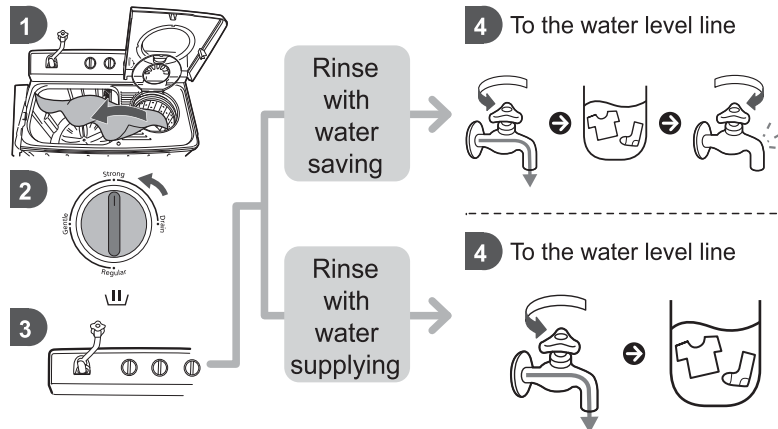
Wash



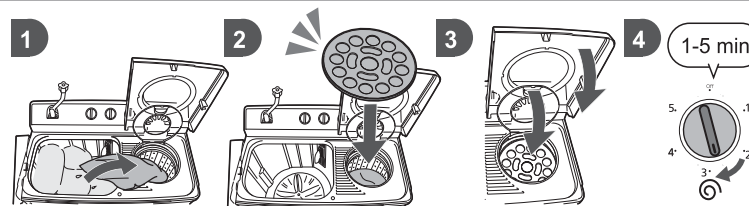
Spin



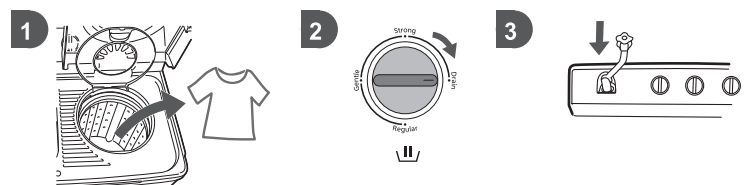
Rinse



Spin

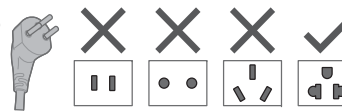


Final Step



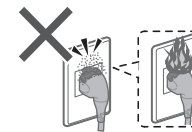
Use a socket appropriate for this appliance

e.g.)



The plug shape, socket shape and rating requirement vary with the region.

Accumulated dust may cause fire



Wipe the power plug periodically



Keep away from flammable materials

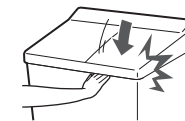


Do not disassemble, repair or modify it by yourself



! CAUTION May cause injury or property damage.

Be careful not to get your fingers caught



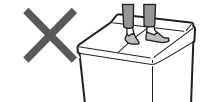
Do not spin waterproof items



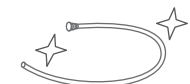
Do not use hot water



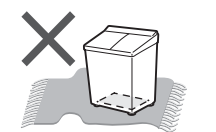
Do not climb on the appliance



Use new hose-sets



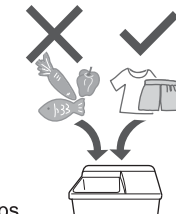
Do not obstruct



For machine-washable items only

This appliance is intended to be used in household.
This appliance is not intended to be used in applications such as:

- staff kitchen areas in shops, offices and other working environments;
- farm houses (excluding clothes);
- by clients in hotels, motels and other residential type environments;
- bed and breakfast type environments;
- areas for communal use in blocks of flats or in laundrettes.



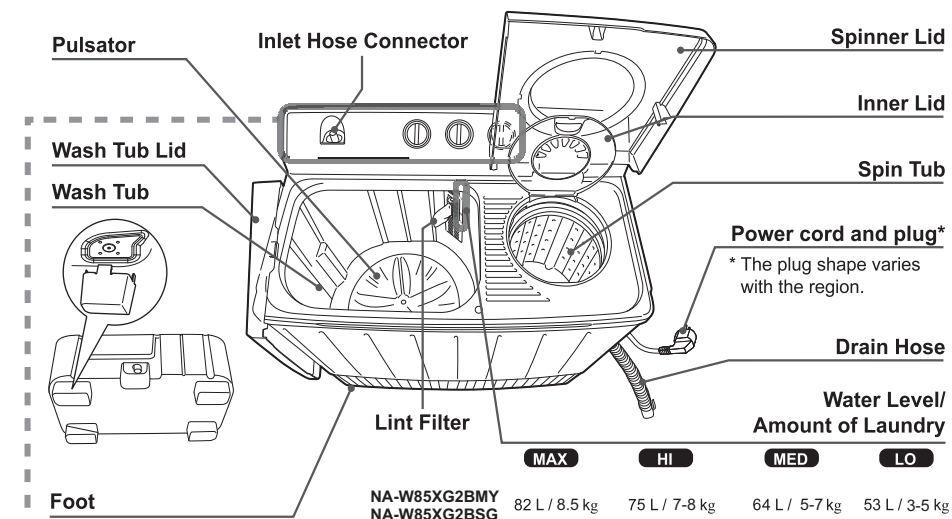
New hose-sets supplied with the appliance are to be used and old hose-sets should not be reused.

Handle the appliance carefully

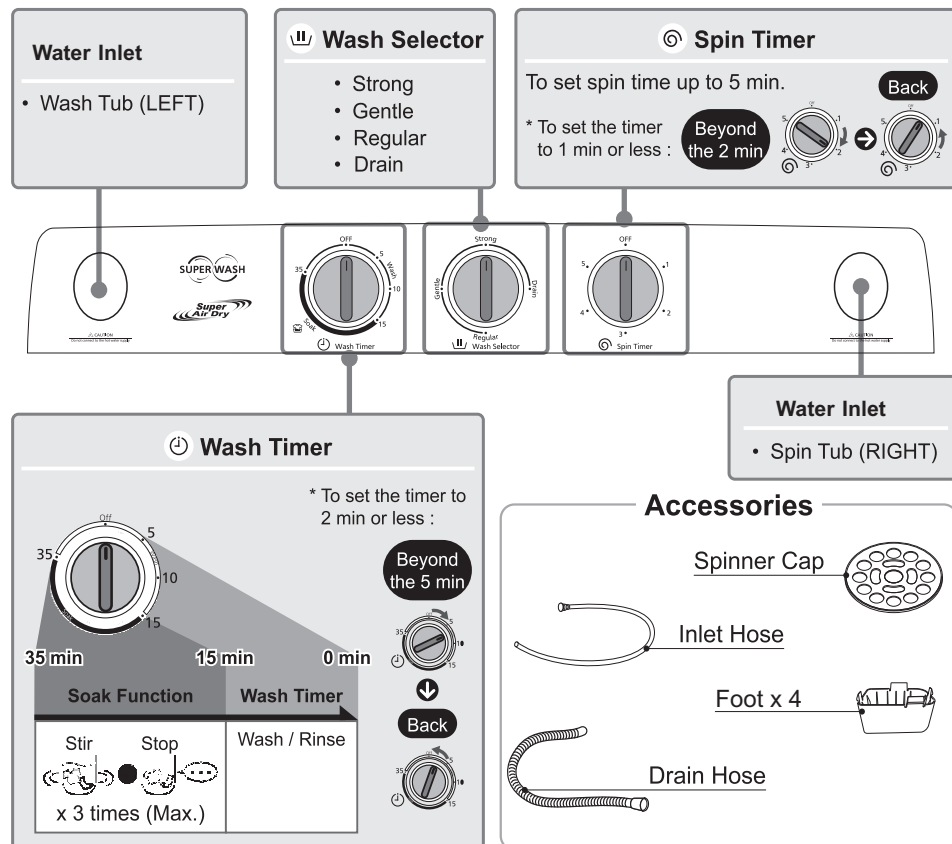


- Unplug and cut off the power.
- Secure parts that can easily come off.

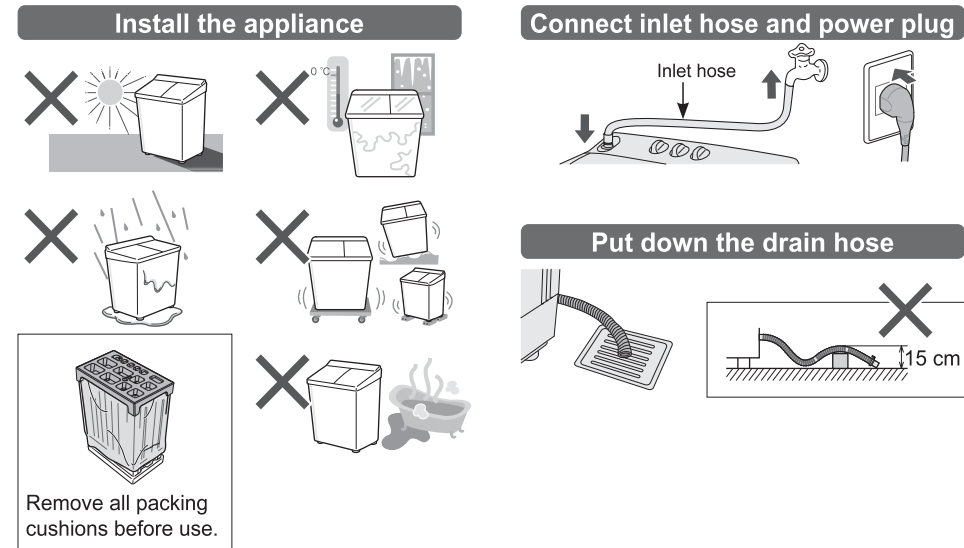
Part Names



Operation Panel



Installation



Laundry Preparation and Check

