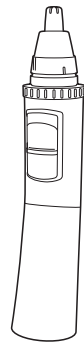


Panasonic®

Operating Instructions (Household use) Nose & Facial Hair Trimmer

Model No. ER-GN30



- Before operating this unit, please read these instructions completely and save them for future use.

Thank you for choosing a Panasonic Nose & Facial Hair Trimmer. Please read all instructions before use.

Safety Precautions

To ensure proper operation of this appliance, please do read all the safety precautions carefully before use. These safety precautions are provided to instruct you with the correct and safe operation of this appliance so that you may avoid injuries to yourself and others as well as damage to property. The safety precautions are defined as follows.

⚠ WARNING:
This indicates “content that may cause death or severe injury”.

⚠ CAUTION:
This indicates “content that may cause injury or damage to property”.

Safety Precautions Symbols

⊘ A circle and slash symbolizes prohibited actions and behaviors.

ⓘ A solid circle denotes mandatory actions and instructions to be followed for safe operation.

⚠ WARNING

ⓘ Mandatory!

- **Do not store within reach of children or infants. Do not let them use it.**

Putting parts or accessories in the mouth may cause an accident or injury.

→ Store with the protection cap attached after use.

- **Immediately stop using if there is an abnormality or malfunction.**

Using it in such conditions may cause fire, or injury.

- **This appliance is not intended for use by persons (including children) with reduced physical, sensory or mental capabilities, or lack of experience and knowledge, unless they have been given supervision or instruction concerning use of the appliance by a person responsible for their safety. Children should be supervised to ensure that they do not play with the appliance.**

Failure to do so may cause an accident or injury.

⚠ CAUTION

ⓘ Mandatory!

- **Check the blade for deformation or damage before use.**
- **Use the trimmer to cut only nose hair, ear hair, outline eyebrows, moustache, or beard.**
- **Always follow the precautions printed on the alkaline battery.**
- **Check the polarity of the alkaline battery (+ and –) and install it correctly.**
- **Remove the alkaline battery immediately and dispose of it safely when it is discharged.**
- **Remove the alkaline battery when not using the appliance for an extended period of time.**
- **Please use the alkaline battery by the recommended use-by date.**
- **Non-rechargeable battery are not to be recharged.**
Failure to do so may cause injury or surrounding contamination due to heat generation, bursting, or leakage of the alkaline battery.

⊘ Prohibited

- **Do not press the blade with excessive force or insert too deeply into your nostril/aural cavity.**
Doing so may result in injury to your nostril/aural cavity.
- **Do not subject the blade to impact, or press with excessive force on the blade.**
Your skin may be injured if blade is damaged or deformed. Doing so may result in the blade becoming blunt or lead to malfunction.
- **Do not touch either the blade or the inner blade (metallic part) with your finger.**
Doing so may result in injury to your finger.

- **Do not throw into fire or disassemble. The supply terminals are not to be short-circuited.**
Doing so may cause a burn or injury.

⊘ Do not dismantle!

- **Never modify, disassemble, or repair.**

Doing so may cause an accident or injury.

→ Contact an authorized service center for repair.

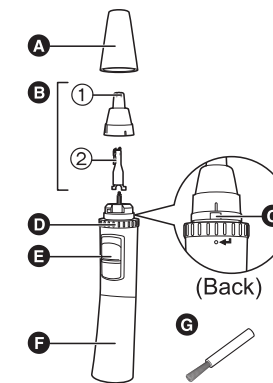
Notes

- **Do not leave the appliance under water, in a humid place, or in a place with high temperature.**
Doing so may result in malfunction.
- **If you clean the trimmer with water, do not use salt water or hot water. Do not soak the trimmer in water for a long period of time.**

Parts identification

- A Protective cap
- B Blade
 - ① Outer blade
 - ② Inner blade
- C Water outlet
- D Wash switch ring
- E Power switch [0/1]
- F Battery cover

- Accessory
- G Cleaning brush



How to remove the blade

1. Rotate the outer blade in the direction of the arrow, and align the marks.
2. Pull to remove the outer blade.
3. Separate the inner blade from the outer blade carefully.

How to attach the blade

1. Slowly insert the inner blade straight along the inner surface of the outer blade.
2. Align the outer blade with the mark, and rotate it in the direction of the arrow until it clicks.

Installing or replacing the battery

1. Make sure the power switch is in the “0” position.

2. Rotate the battery cover in the direction of the arrow, and align the marks.

3. Pull to remove the battery cover.

4. Insert the battery.

- Be careful to insert the battery with + and – correctly oriented.

5. Align the marks and insert the main body into the battery cover.

6. Rotate the battery cover in the direction of the arrow.

- Use only LR6 (AA Alkaline Battery).
- You can use the appliance for approximately 1 year with the Panasonic LR6 (AA Alkaline Battery).
(When using once a week, 90 seconds at a time (including washing operation))
- Please dispose of used battery appropriately.

Use

Trimming your nose hair and ear hair

- 1 Check that the wash switch ring is not set to “1”.
- 2 Slide the power switch to the “1” position to turn the appliance on.

- 3 Insert the tip of the outer blade into your nostril or aural cavity.
 - Insert it slowly so as not to injure your nostril or aural cavity.


- 4 Cut the nose hair and ear hair by moving the appliance.
 - Move it slowly so as not to injure your nostril or aural cavity.

- Cut only the nostril hair around the entrance using the tip (approx. 3/16" (5 mm)) of the outer blade (metallic part).
- Some trimmings may remain inside your nostril or aural cavity after cutting, so remove them using a tissue or similar.
- The surface of the outer blade may get a little warm during operation which does not affect performance.

Outlining your eyebrows, moustache, or beard

You cannot trim the hair to length with this appliance.
It is not suitable for the hair below 1/64" (0.5 mm).

- 1

Check that the wash switch ring is not set to “”.
- 2

Slide the power switch to the “1” position to turn the appliance on.
- 3

Place the tip of the outer blade against the hair (eyebrows, moustache, or beard) you would like to cut.
 - Press the outer blade softly so as not to injure your skin.
- 4

Cut the hair by moving it slowly against the direction of the hair.



- The surface of the outer blade may get a little warm during operation which does not affect performance.

Clean

Cleaning your trimmer

- There are 3 ways to clean the appliance: “Jet wash cleaning”, “Water wash cleaning”, and “Brush cleaning”. It is recommended to clean after every use.
- After cleaning, be sure to attach the blades and the protective cap.
- Clean the housing only with a soft cloth slightly dampened with tap water or soapy tap water. Do not use thinner, benzine, alcohol or other chemicals.

Water wash cleaning

Notes

- Do not use kitchen detergents, bathroom cleaner, or hot water. Doing so may result in malfunction.
- The battery cover should not be taken apart as this can affect the watertight construction of the appliance.

1.


Wet the outer blade with water, and apply hand soap or cleaning fluid (optional).
2.

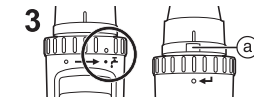
Slide the power switch to the “1” position, and let it foam for approximately 10 seconds.



Jet wash cleaning

3.

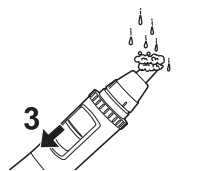
Align the wash switch ring to “”.
- The water outlet (a) opens.



Water wash cleaning

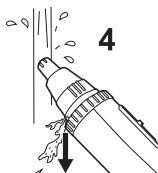
3.

Slide the power switch to the “0” position and remove the blade.



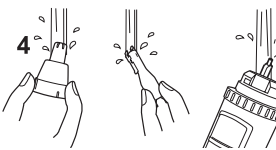
4.

With the power switch still set to the “1” position, place the tip of the blade into water and rinse thoroughly.
 - Water will jet out from the rear side of the appliance, so point it downward in order to not wet the surroundings.



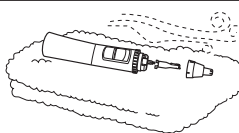
4.

Rinse under running water.



5.

Wipe off the water with a towel or similar and let it dry naturally.
 - Drying will be faster when the blades are removed.



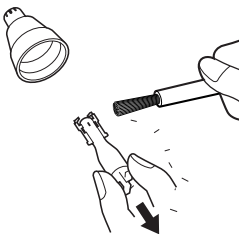
Brush cleaning

1.

Make sure the power switch is in the “0” position.
2.

Remove the blade, and lightly brush off the trimmings on the inner blade and outer blade using the cleaning brush.
3.

Attach the blade.



Replacement blade

To maintain a sharp cutting performance, it is recommended to replace the blade approximately every 3 years.
When replacing the blade, replace both the outer blade and the inner blade at the same time.

SPECIFICATIONS

Model No.	ER-GN30
Power source	One LR6 (AA Alkaline Battery) (Sold separately)

This product is intended for household use only.

[India Only]

Information on hazardous constituents as specified in sub-rule1 of rule16 in electrical and electronic equipment.

Declaration of Conformity with the requirements of the E-Waste (Management) Amendment Rules, 2023 with the sub-rule1 of rule16 limits with respect to Lead, Mercury, Cadmium, Hexavalent chromium, Polybrominated biphenyls, Polybrominated diphenyl ethers.

The content of hazardous substance with the exemption of the applications listed in SCHEDULE II of the E-Waste (Management) Amendment Rules, 2023:

- Lead (Pb) – not over 0.1% by weight.
- Cadmium (Cd) – not over 0.01% by weight.
- Mercury (Hg) – not over 0.1% by weight.
- Hexavalent chromium (Cr6+) – not over 0.1% by weight.
- Polybrominated biphenyls (PBBs) – not over 0.1% by weight.
- Polybrominated diphenyl ethers (PBDEs) – not over 0.1% by weight.



For the purpose of recycling to facilitate effective utilization of resources, please return this product to a nearby authorized collection center, registered dismantler of recycler, or Panasonic service center when disposing of this product.

Customer care number (Toll free) : 080-694-1333

Please see the Panasonic website for further information on collection centers, etc. or call the customer care toll-free number.

<https://www.panasonic.com/in/corporate/e-waste-management.html>

Do's & Don'ts		
No.	Do's	Don'ts
1	All electrical and electronic products are required to be handed over only to the Authorized recycler.	The product should not be opened by the user himself / herself, but only by authorized service personnel.
2	The product should be handed over only to authorized recycler for disposal.	The product is not meant for re-sale to any unauthorized agencies / scrap dealers / kabariwalas.
3	Keep the product in an isolated area, after it becomes non-functional / unrepairable so as to prevent its accidental breakage.	The product is not meant for mixing into household waste stream.
4	Refer to Operating Instructions for handling of end of life products.	Do not keep any replaced spare part(s) from the product in an exposed area.
5	Always dispose of products that have reached end of life at Panasonic Life Solutions India Authorized Service Centre.	Do not donate old electronic items to anybody. Do not dispose of your product in garbage bins along with municipal waste that ultimately reaches landfill.
6	Wherever possible or as instructed, separate the packaging material according to responsible waste disposal options and sorting for recycling.	Do not give e-waste to informal and unorganized sectors like Local Scrap Dealers / Rag Pickers.