

# Panasonic®

## Operating Instructions AC/Rechargeable Professional Hair Clipper Model No. ER-GP81

### Contents

<b>Safety precautions.....</b>	<b>2</b>	<b>Care.....</b>	<b>8</b>
<b>Intended use .....</b>	<b>5</b>	<b>Troubleshooting .....</b>	<b>10</b>
<b>Parts identification .....</b>	<b>6</b>	<b>Frequently asked questions .....</b>	<b>10</b>
<b>Charging the clipper.....</b>	<b>6</b>	<b>Removing the built-in rechargeable battery .....</b>	<b>11</b>
<b>Using the clipper .....</b>	<b>7</b>	<b>Specifications .....</b>	<b>11</b>



Thank you for purchasing this Panasonic product.

**Before operating this unit, please read these instructions completely and save them for future use.**

## Safety precautions

To reduce the risk of injury, loss of life, electric shock, fire, and damage to property, always observe the following safety precautions.

### Explanation of symbols

The following symbols are used to classify and describe the level of hazard, injury, and property damage caused when the denotation is disregarded and improper use is performed.



## DANGER

Denotes a potential hazard that will result in serious injury or death.



## WARNING

Denotes a potential hazard that could result in serious injury or death.



## CAUTION

Denotes a hazard that could result in minor injury.

The following symbols are used to classify and describe the type of instructions to be observed.



This symbol is used to alert users to a specific operating procedure that must not be performed.



This symbol is used to alert users to a specific operating procedure that must be followed in order to operate the unit safely.



## WARNING

### ► Power supply



**Do not connect or disconnect the adaptor to a household outlet with a wet hand.**

- Doing so may cause electric shock or injury.

**Do not immerse the appliance, AC adaptor and the charging stand in water or wash it with water.**

**Do not place the appliance, AC adaptor and the charging stand over or near water filled sink or bathtub. Never use the appliance if the AC adaptor is damaged or if the adaptor fits loosely in a household outlet.**



**Do not damage or modify, or forcefully bend, pull, or twist the cord.**

**Also, do not place anything heavy on or pinch the cord.**

- Doing so may cause electric shock or fire due to a short circuit.

**Keep the appliance dry.**



**Do not use in a way exceeding the rating of the household outlet or the wiring.**

- Exceeding the rating by connecting too many plugs to one household outlet may cause fire due to overheating.



**Do not use anything other than the supplied AC adaptor and the charging stand for any purpose.**

**Also, do not use any other product with the supplied AC adaptor and charging stand. (See page 6.)**

- Doing so may cause burn or fire due to short circuit.



## WARNING



**Always ensure the appliance is operated on an electric power source matched to the rated voltage indicated on the AC adaptor.**

**Fully insert the adaptor.**

- Failure to do so may cause fire or electric shock.



**Always unplug the adaptor from a household outlet when cleaning.**

- Failure to do so may cause electric shock or injury.



**Regularly clean the power plug, the appliance plug and the charging plug to prevent dust from accumulating.**

- Failure to do so may cause fire due to insulation failure caused by humidity.

Disconnect the power plug and wipe with a dry cloth.

### ► In case of an abnormality or malfunction

**Immediately stop using and remove the adaptor if there is an abnormality or malfunction.**

- Failure to do so may cause fire, electric shock, or injury.

**<Abnormality or malfunction cases>**



• **The main unit or AC adaptor is deformed or abnormally hot.**

• **The main unit or AC adaptor smells of burning.**

• **There is abnormal sound during use or charging of the main unit or AC adaptor.**

- Immediately request inspection or repair at an authorized service center.

### ► This product



**This product has a built-in rechargeable battery.**

**Do not throw into fire, apply heat, or charge, use, or leave in a high temperature environment.**

- Doing so may cause fluid leak, overheating, or explosion.



**Do not modify or repair.**

- Doing so may cause fire, electric shock, or injury.  
Contact an authorized service center for repair (battery change, etc.).



**Never disassemble except when disposing of the product.**

- Doing so may cause fire, electric shock, or injury.

### ► Preventing accidents



**Do not store within the reach of children or infants.**

**Do not let them use it.**

- Putting the blade, and/or oil container in the mouth may cause accidents and injury.



**If the oil is consumed accidentally, do not induce vomiting, drink a large amount of water, and contact a physician.**

**If the oil comes into contact with eyes, immediately wash thoroughly with running water, and contact a physician.**

- Failure to do so may result in physical problems.

### ► Note the following precautions



**This appliance is not intended for use by persons (including children) with reduced physical, sensory or mental capabilities, or lack of experience and knowledge, unless they have been given supervision or instruction concerning use of the appliance by a person responsible for their safety. Children should be supervised to ensure that they do not play with the appliance.**

- Failure to do so may cause an accident or injury.



**The supply cord cannot be replaced. If the cord is damaged, the AC adaptor should be scrapped.**

- Failure to do so may cause an accident or injury.

## **CAUTION**

### ► Protecting the skin

Do not press the blade against the skin.

Do not use the product for any purpose other than hair trimming.



Do not directly apply the blades on ears or rough skin (such as swellings, injuries or blemishes).

- Doing so may cause injury to ears or uneven skin.



Check that the blades are not damaged or deformed before use.

- Failure to do so may cause skin injury.

### ► Note the following precautions



Do not allow metal objects or trash to adhere to the power plug or the appliance plug.

- Doing so may cause electric shock or fire due to a short circuit.



Do not drop or subject to shock.

- Doing so may cause injury.



Do not wrap the cord around the adaptor or the charging stand when storing.

- Doing so may cause the wire in the cord to break with the load, and may cause fire due to short circuit.



Disconnect the adaptor from the household outlet when not using.

- Failure to do so may cause electric shock or fire due to electrical leakage resulting from insulation deterioration.



Disconnect the adaptor or the appliance plug by holding onto the adaptor or the appliance plug instead of the cord.

- Failure to do so may cause electric shock or injury.

## Handling of the removed battery when disposing

## **DANGER**

The rechargeable battery is exclusively for use with this appliance. Do not use the battery with other products.

Do not charge the battery after it has been removed from the product.

• Do not throw into fire or apply heat.

• Do not hit, disassemble, modify, or puncture with a nail.



• Do not let the positive and negative terminals of the battery get in contact with each other through metallic objects.

• Do not carry or store the battery together with metallic jewellery such as necklaces and hairpins.

• Do not use or leave the battery where it will be exposed to high temperatures, such as under direct sunlight or near other sources of heat.

• Never peel off the tube.

- Doing so may cause overheating, ignition, or explosion.

## **WARNING**



**After removing the rechargeable battery, do not keep it within reach of children and infants.**

- The battery will harm the body if accidentally swallowed. If this happens, consult a physician immediately.

**If the battery fluid leaks out, do not touch the battery with your bare hands.**



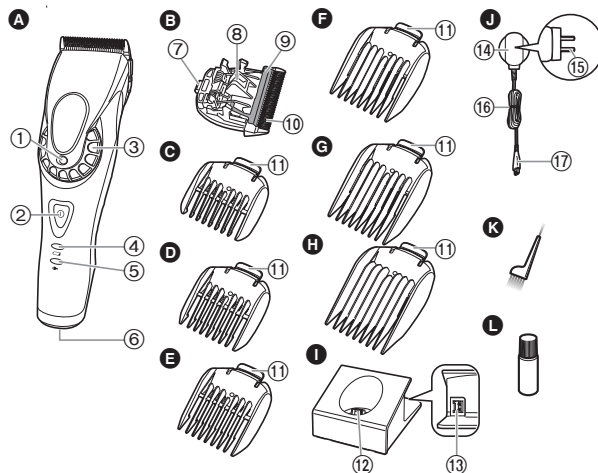
- The battery fluid may cause blindness if it comes in contact with your eyes. Do not rub your eyes. Wash immediately with clean water and consult a physician.
- The battery fluid may cause inflammation or injury if it comes in contact with the skin or clothes. Wash it off thoroughly with clean water and consult a physician.

## **Intended use**

- This clipper is designed for professional use to trim hair. It can be operated on either an AC adaptor or rechargeable battery.
- Before and after each use, apply lubrication oil at the marked places. (See page 9.) Failure to apply the lubrication oil may cause the following problems.
  - The clipper has become blunt.
  - Shorter operating time.
  - Louder sound.
- The clipper may become warm during operation and/or charging. This is normal.
- Do not use any blade other than the one dedicated as it may cause defect in performance.
- Do not use thinner, benzine, alcohol or other chemicals. Doing so may cause failure, cracking or discoloration of the main body. Clean the main body only with a soft cloth slightly dampened with tap water or soapy tap water.
- You should not allow permanent wave lotion, hair dyeing or hair spray to come into contact with the main body or the blades. Doing so may result in cracking or corrosion.
- Before using an attachment, check that it has been installed correctly. Failure to do so may cause hair to be cut too short.
- The following symbol indicates that a specific detachable power supply unit is required for connecting the electrical appliance to the supply mains. The type reference of power supply unit is marked near the symbol.



## Parts identification



### A Main body

- ① Trimming height indicator
- ② Power switch
- ③ Dial (Height adjustment control)
- ④ Recharge lamp
- ⑤ Charge status lamp
- ⑥ Appliance socket

### B Blade

- ⑦ Mounting hook
- ⑧ Cleaning lever
- ⑨ Moving blade
- ⑩ Stationary blade

### C Comb attachment ①

1/8" (3 mm)

### D Comb attachment ②

1/4" (6 mm)

### E Comb attachment ③

3/8" (10 mm)

### F Comb attachment ④

1/2" (13 mm)

### G Comb attachment ⑤

5/8" (16 mm)

### H Comb attachment ⑥

3/4" (19 mm)

⑪ Lever

### I Charging stand (RC9-87)

- ⑫ Charging plug
- ⑬ Stand socket

### J AC adaptor (RE9-82)

- ⑭ Adaptor
- ⑮ Power plug
- ⑯ Cord
- ⑰ Appliance plug

### Accessories

- K Cleaning brush
- L Lubrication Oil

## Charging the clipper

- Make sure that the clipper is turned off.

**1 Connect the appliance plug to the stand socket.**

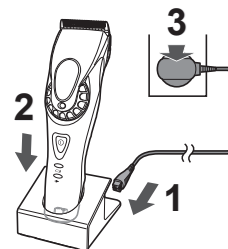
**2 Place the clipper on the charging stand.**

**3 Insert the adaptor into a household outlet.**

- Charging is completed after approx. 1 hour.
- Check the charge status lamp (➡) glows.

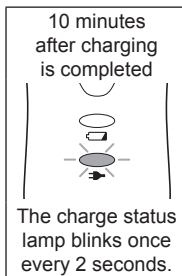
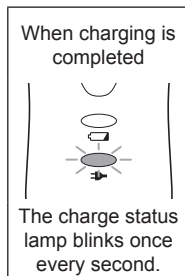
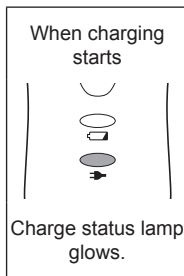
**4 Disconnect the power plug after charging is completed.**

(for safety and to reduce energy usage)



- Charging is required when the recharge lamp blinks.
- The clipper can be used for approximately 5 minutes after the recharge lamp blinks.





- If there is noise from radio or other source while using or charging the clipper, move to a different location to use the clipper.
- The battery will deteriorate if not used for over 6 months, so make sure to perform a full charge at least once every 6 months.
- The charging time may differ when using the clipper for the first time, or if it has not been used for more than 6 months. The lamp on the main body may not glow for several minutes when first starting charging, but will glow when continuing to charge.
- Recommended ambient temperature for charging is 10 °C – 35 °C. The battery may not charge properly or not at all under extreme low or high temperatures.
- When the charge status lamp is blinking rapidly (twice every second), there is a charging malfunction. Please charge the battery in the recommended ambient temperature range.
- 1 full charge will provide approximately 50 minutes of continuous operation. (Based on dry using at 20 °C – 30 °C.)  
The operating time may differ depending on the frequency of use and the operating method.
- The battery used is a lithium-ion, so charging after every use will have no effect on battery life.

## Charging without the charging stand

1. Press the power switch to turn off the power, and insert the appliance plug into the clipper.
2. Plug in the adaptor into a household outlet.



## AC operation

If you connect the AC adaptor to the clipper in the same way as for charging, and turn on the power, you can use it.

- If the remaining battery is too low, the blades may move slowly or stop, even with the AC operation. In this case, charge the battery for 1 minute or more.
- The battery will be discharged, even with the AC operation.

## Using the clipper

- Make sure that the clipper is turned off.
- The appliance may not operate in an ambient temperature lower than approximately 5 °C.

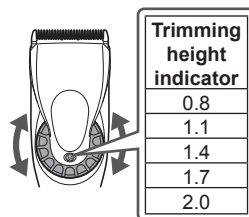
### 1 Set the trimming height.

### 2 Press the power switch to turn on the power.

## Setting the trimming height

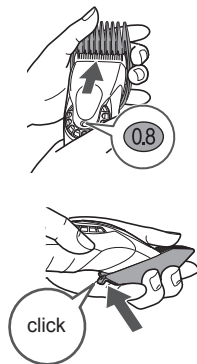
For a trimming height of 0.8 mm to 2.0 mm, turn the dial to the desired height.

Use an attachment for a trimming height higher than 3 mm or more.



## Using the comb attachments

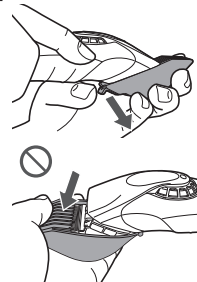
- 1 Select the trimming heights indicated on the outside of the attachments.
- 2 Set the dial to "0.8" and then mount the attachment to the clipper until it clicks as illustrated.



## Removing the attachment from the clipper

Push the lever at the back of the attachment, and open it in the direction of the arrow to remove it.

- Do not forcefully push down while holding the tip of the comb. The blade is removed with the attachment.



## Care

### Removing and mounting the blade

- Be sure to turn off the power before you remove the blade.

#### Removing the blade

Hold the clipper with the switch facing upward and push the blade with your thumb while catching the blade in your other hand.



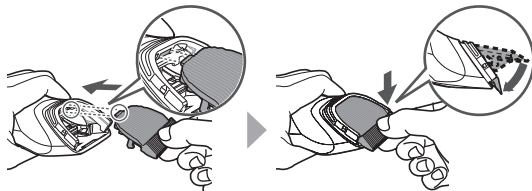


### Mounting the blade

1. Set the dial to "2.0".



2. Fit the mounting hook into the blade mounting on the clipper and push in until it clicks.

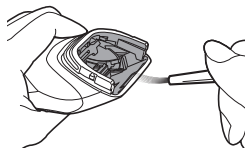


### Cleaning

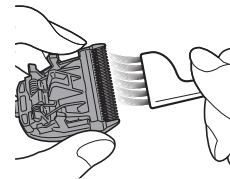
Clean the clipper and the blade after each use. (If not cleaned, the motion will become poor and the sharpness will worsen.)

- Make sure that the clipper is turned off.

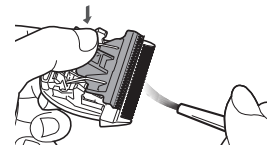
1. Brush off any hairs from the clipper and from around the blade.



2. Brush off the hairs from the blade edge.



3. Brush the hairs out from between the stationary blade and the moving blade while pressing down on the cleaning lever to raise the moving blade.



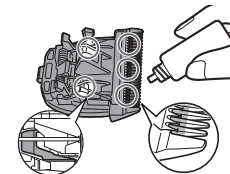
### Lubrication

- Apply lubrication oil to the blade before and after each use.

Apply a drop of the lubrication oil to each indicated point. Attach the blade to the main body, turn on the power and allow to run for approximately 5 seconds.

Failure to apply the lubrication oil may cause the following problems due to rust, wear or burn out.

- The clipper has become blunt.
- Shorter operating time.
- Louder sound.



## ► Replacement parts

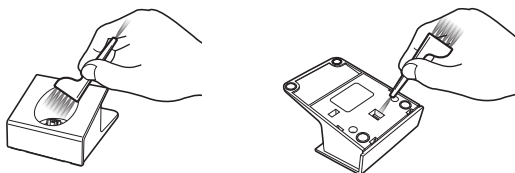
Replacement part is available at your dealer or Service Center.

Replacement parts for ER-GP81	Blade	WER9900
-------------------------------	-------	---------

- Do not use any blade other than the one dedicated as it may cause defect in performance.

## Cleaning the charging stand

Use the cleaning brush to clean hair trimmings and dust in the charging plug or in the hole on the bottom surface.



## Troubleshooting

Problem	Action
The clipper has become blunt.	► Charge the clipper. (See page 6.)
	► Clean the blade and apply lubrication oil. (See pages 8 and 9.)
	► Replace the blade. (See pages 8 and 10.)
Clipper stopped functioning.	► Charge the clipper. Or use with the AC operation. (See page 6.)

### Problem

### Action

The clipper cannot be charged.

- Push the main body into the charging stand or appliance plug all the way.
- Charge within the recommended charging temperature of 10 °C to 35 °C.

Clipper can be used for only about 10 minutes even after charging.

- Have the battery replaced by an authorized service center.

Makes a loud sound.

- Confirm that the blade is properly attached.

If the problems still cannot be solved, contact the store where you purchased the unit or a service center authorised by Panasonic for repair.

## Frequently asked questions

### Question

### Answer

Will the battery deteriorate if not used for an extended period of time?

- The battery will deteriorate if not used for over 6 months, so make sure to perform a full charge at least once every 6 months.

Can the battery be charged before every use?

- The clipper uses a lithium ion battery, with the charging current controlled, so there is no problem with battery life.

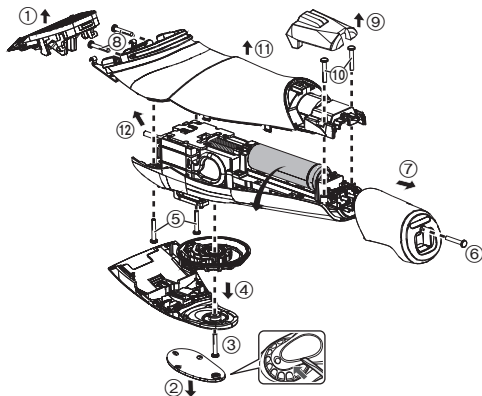
## Removing the built-in rechargeable battery

### Remove the built-in rechargeable battery before disposing the clipper.

Please make sure that the battery is disposed of at an officially designated location if there is one.

This figure must only be used when disposing the clipper, and must not be used to repair it. If you dismantle the clipper yourself, it may cause malfunction.

- Remove the clipper from the AC adaptor.
- Press the power switch to turn on the power and then keep the power on until the battery is completely discharged.
- Perform steps ① to ⑫ and lift the battery, and then remove it.
- Take care not to short circuit the positive and negative terminals of the removed battery, and insulate the terminals by applying tape to them.



## For environmental protection and recycling of materials

This clipper contains a Lithium-ion battery.

Please make sure that the battery is disposed of at an officially assigned location, if there is one in your country.

## Specifications

Power source	See the name plate on the AC adaptor. (Automatic voltage conversion)
Motor voltage	3.6 V $\text{---}$
Charging time	Approx. 1 hour

Panasonic Corporation  
<http://www.panasonic.com>  
© Panasonic Corporation 2018

Ⓕ EN

Printed in Japan  
ER9710GP811H S0218-0