

# Panasonic

Operating Instructions  
(Household use) Multi-trimmer kit  
Model No. ES-WM31



Thank you for purchasing this Panasonic product.  
Before operating this unit, please read these instructions  
completely and save them for future use.

## WARNING

- This appliance can be used by children aged from 8 years and above and persons with reduced physical, sensory or mental capabilities or lack of experience and knowledge if they have been given supervision or instruction concerning use of the appliance in a safe way and understand the hazards involved. Children shall not play with the appliance. Cleaning and user maintenance shall not be made by children without supervision.

### Safety precautions

Make sure to follow these instructions.

- To prevent accidents, injuries or damage to property, please follow the instructions below.

**⚠ WARNING** Indicates potential hazard that could result in serious injury or death.

**⚠ CAUTION** Indicates potential hazard that could result in minor injury or property damage.

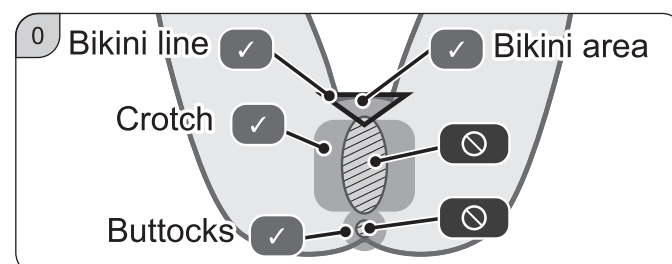
Some parts of the safety precaution illustrations differ from the actual product.

### ⚠ WARNING

- This product**
- Do not place within reach of children or infants. Do not let them use it.**  
Doing so may cause injury or accidental ingestion of the accessories or removable of small parts.
- Immediately stop using if there is an abnormality or malfunction.**  
Failure to do so may cause fire or injury.

### ⚠ CAUTION

- To protect your skin**
- The following persons should not use this appliance:**
  - Persons with sensitive or delicate skin and persons with allergies
- Bikini trimmer head and shaver head is only for the bikini area/crotch/buttocks. (Do not use for genitals other than the outer lips of the vulva, anus, and associated mucous membranes.)**
- Body trimmer head is only for the body hair. (Do not use for bikini area/crotch/buttocks.)**  
Failure to do so may cause injury to the skin.
- Do not use in the following body areas:**
  - Face
  - Pre-existing injuries, rashes, moles, bruises, warts, pimples or any other protrusions, along with the surrounding areas of each
  - Skin which is flaccid, limp, sagging, crepey, etc.



- Do not apply strong pressure to the skin or move repeatedly over the same area.**
- Do not use with a jabbing motion.**  
Doing so may result in skin inflammation, abrasions, bleeding or even more serious injury.
- Pull the skin taut with your free hand whilst shaving.**
- When using on hard-to-reach areas, please use a mirror or change position so that it is easier to see.**  
Failure to do so may result in skin inflammation, abrasions and/or bleeding
- If skin problems appear after use, stop using the appliance and contact a dermatologist.**  
Failure to do so may cause symptoms to worsen.
- When storing or carrying, always attach the attachment or the cap.**  
Failure to do so may cause injury to the skin or reduce the life of the outer foil.
- Check the outer foil for cracks or deformations before use.**
- Be sure to use the provided skin guard when applying the bikini trimmer head to your crotch or buttocks.**  
Failure to do so may cause injury to the skin.
- This product**
- Do not forcefully press the outer foil. Do not touch the outer foil with fingers or nails when in use.**  
Doing so may cause injury to the skin or reduce the life of the outer foil.
- Do not touch the blade section (metallic section) of the inner blade.**  
Doing so may cause injury to your hands.
- Do not share with your family or others.**  
Doing so may cause infection or inflammation.
- Do not modify, disassemble or repair.**  
Doing so may cause an accident or injury.  
→ Contact an authorized service center for repair.

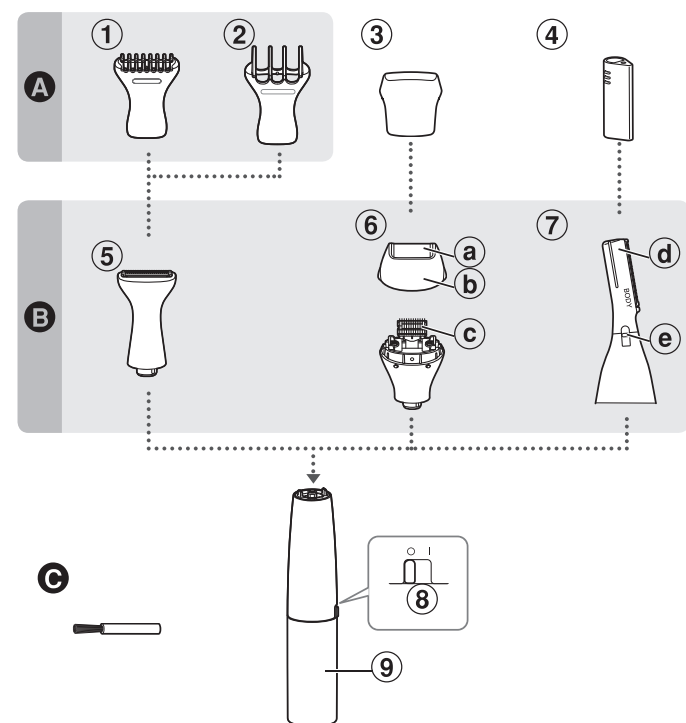
## ⚠ CAUTION

- The battery**
- Do not throw the battery into fire or disassemble.**
- The supply terminals are not to be short-circuited.**  
Doing so may cause a burn or injury.
- Always follow the cautions printed on the battery.**
- Check the polarity of the battery (+ and -) and install it correctly.**
- Remove the battery immediately and dispose of it safely when it is discharged.**
- Remove the battery when not using the appliance for an extended period of time.**
- Use the battery by the recommended use-by date.**
- Non-rechargeable batteries are not to be recharged.**  
Failure to do so may cause overheating or explosion of the battery, injury or contamination of surroundings due to leakage.

## Important information

- Store the appliance in a place with low humidity after use.  
Leaving the appliance in a bathroom or similar area may cause a malfunction due to condensation or rust.
- Do not drop or hit against other objects.

## Parts identification



### A Attachment

- Skin guard
- Bikini comb
- Bikini shaver cap
- Body trimmer cap

### Accessory

#### C Cleaning brush

A battery is not supplied.  
Please purchase it separately

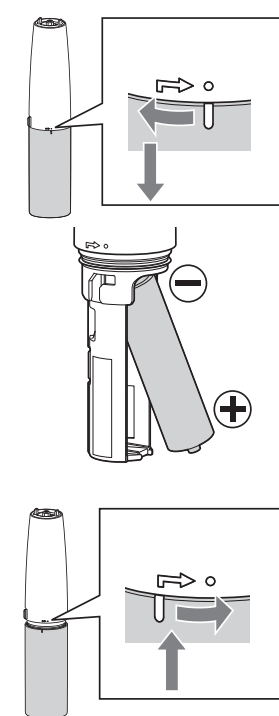
### B Head

- Bikini trimmer head
- Bikini shaver head
  - Outer foil
  - Outer foil frame
  - Inner blade
- Body trimmer head
  - Blade
  - Blade release button
- Power switch [O/I]
- Battery cover

## Before use

### Installing the battery

- Turn the battery cover in the direction of the arrow and remove it.
- Check the polarities of the battery, and install it.
- Attach the battery cover back on, aligning it with the mark on the main body, and turning it in the direction of the arrow.



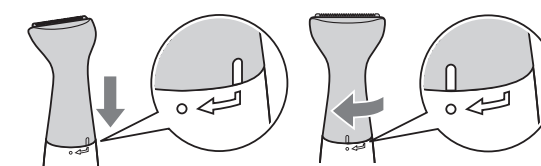
### Notes

- You can use the appliance for approximately 1 month with one Panasonic LR6 (AA alkaline battery). (When used for approx. 5 minutes at one time, twice a week in a room temperature of 20 °C.)
- Thoroughly wipe the main body to prevent water droplets from getting inside when installing the battery.
- Use only LR6 (AA alkaline battery). Manganese batteries significantly degrade performance.

## Installing the head

To attach the head to the main body, align it to the mark on the main body and turn it in the direction of the arrow. To remove it, take the steps in the reverse order.

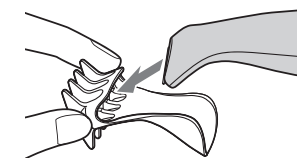
- The illustration shows the bikini trimmer head.



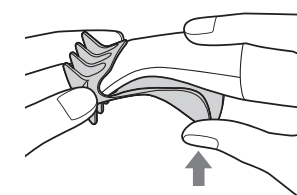
## Installing the attachment

### ▶ Attaching

1. Insert the head into the attachment until the edge of blade stops.

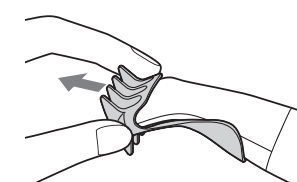


2. While securing the attachment, push it into the head firmly with your fingers until it clicks.
  - Make sure that the attachment does not come off.



### ▶ Removing

1. Pull out the attachment.
  - The illustration shows the bikini comb.



## Instructions

Dry shaving is recommended. If the hair is wet, it may be difficult to shave or trim to uniform a length as the hair sticks to the skin or tangles together.

- 1 Attach the head and attachment suitable for your purpose.
- 2 Turn the power switch to "I".
- 3 Turn the power switch to "O" after use.
  - Clean the appliance after use.

### On your bikini area, crotch and buttocks

- To use the bikini trimmer head to your crotch or buttocks, be sure to use the provided skin guard.
- When you apply the appliance to areas that you cannot see, use a mirror to avoid damaging the skin.

### Tips

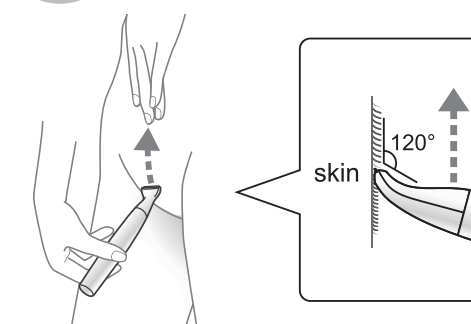
- To get a better shave, stretch the skin with your free hand, apply the head or attachment to the skin firmly and move the appliance gently and slowly.
- If your hair lies flat on the skin, stroke the hair against the flow to make it stand while shaving.

## Close shaving

Bikini area (not including crotch and buttocks area)

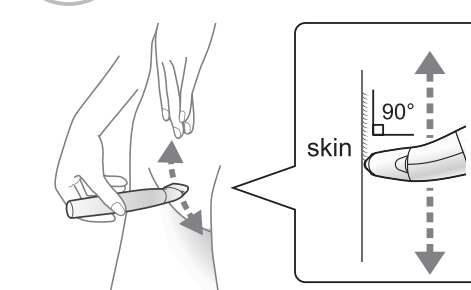


- 1 Trim the hair to 1.5 mm or less with the bikini trimmer head.



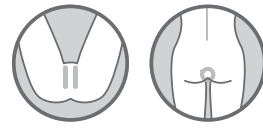
- Apply the bikini trimmer head to the skin firmly and trim upwards using slow and gentle strokes.

- 2 Shave completely with the bikini shaver head.

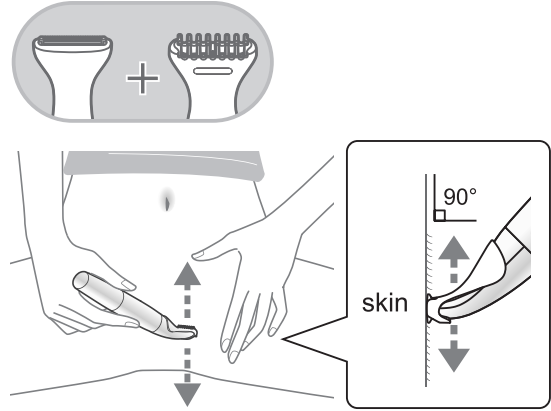




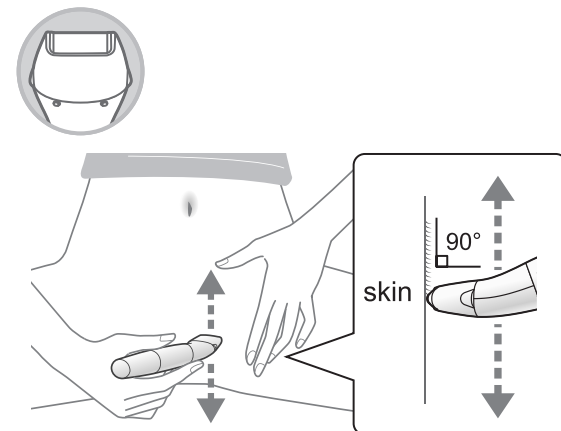
## Crotch and buttocks



## 1 Attach the provided skin guard to the bikini trimmer head and trim the hair to 1.5 mm or less.



## 2 Shave completely with the bikini shaver head.



### Note

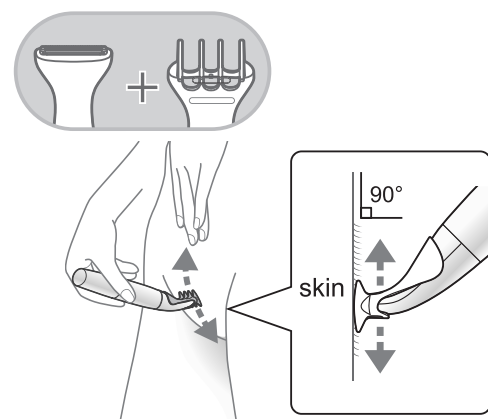
- An injury may result even with the skin guard attached.
  - Be careful not to allow the appliance to make contact with the prohibited area. (Fig.0)
  - Do not press the appliance strongly against the soft area.
- If the hair is not trimmed short enough with the bikini trimmer head, it may be difficult to get a close shave with the bikini shaver head.

### Trimming

## Only for bikini area



## 1 Set the provided bikini comb to the bikini trimmer head and trim.

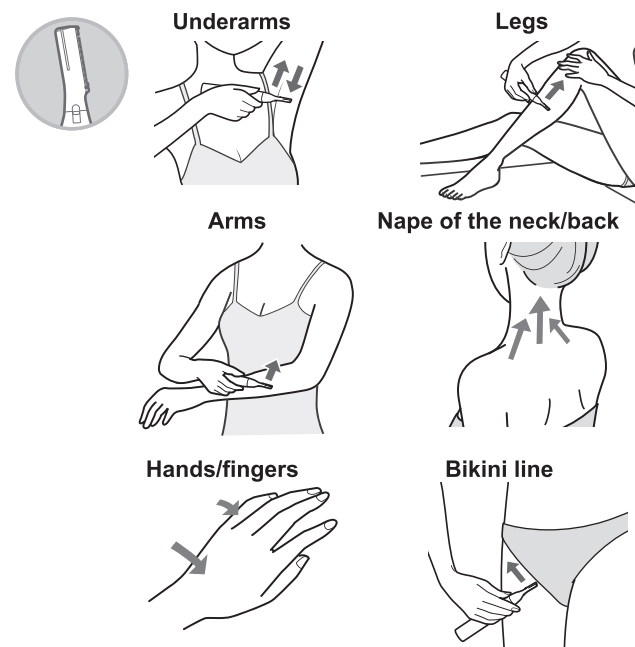


- The finished length is approximately 6 mm.

## On your body

## 1 Set the body trimmer head and trim.

- Move the appliance toward the direction indicated by an arrow slowly against the hair flow.



### Replacing

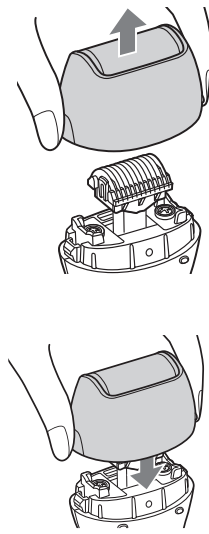
Make sure the power switch is in the "O" position

#### Removing and attaching the bikini shaver head

- Remove the outer foil from the outer foil frame only when replacing it.

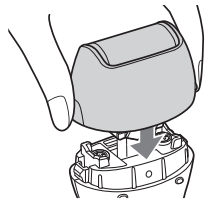
#### Removing the outer foil frame

Lift the outer foil frame upwards.



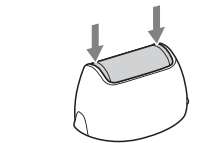
#### Attaching the outer foil frame

Attach the outer foil frame evenly until it clicks.



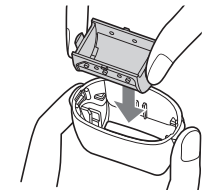
#### Removing the outer foil

Push both ends of the outer foil in.



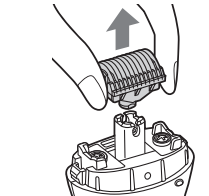
#### Attaching the outer foil

Securely attach the outer foil until it clicks.



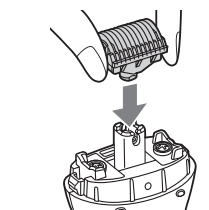
#### Removing the inner blade

Pull the inner blade straight out.



#### Attaching the inner blade

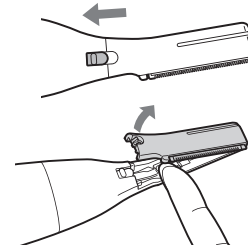
Securely attach the outer foil until it clicks.



#### Removing and attaching the body trimmer head

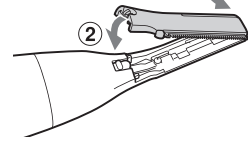
##### Removing the blade

- Slide the blade release button.
  - It is easier to slide the blade release button with using your fingernail.
- Remove the blade.

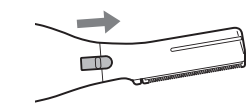


##### Attaching the blade

- Insert the hook at the end of the head into the hole on the blade to attach it.



- Slide the blade release button.
  - It is easier to slide the blade release button with using your fingernail.

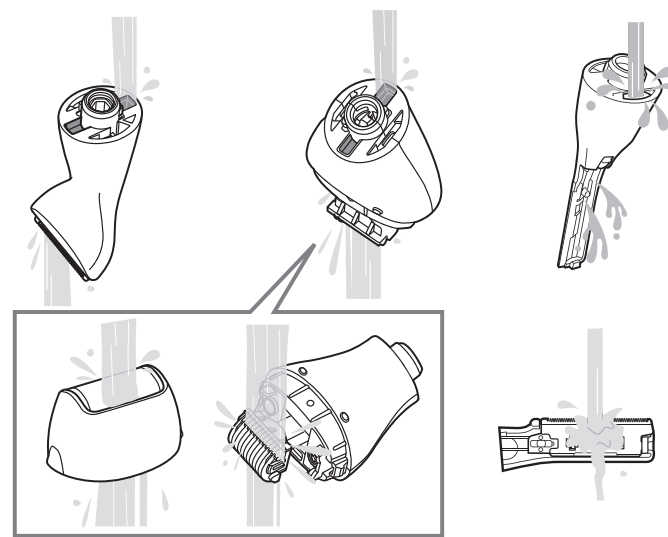


### Cleaning

- Clean the appliance after use, otherwise it might affect the cutting performance.
- Remove the attachment and the head when cleaning. Remove the outer foil frame when cleaning the bikini shaver head.
- Be careful not to hit the main body on the sink or any other object while draining the water. Failure to do so may cause malfunction.
- Do not wipe with alcohol or nail polish remover. Doing so may cause malfunction, cracking of the parts or discoloration.

### Wet cleaning

Clean the main body, the attachment and the head with running water.

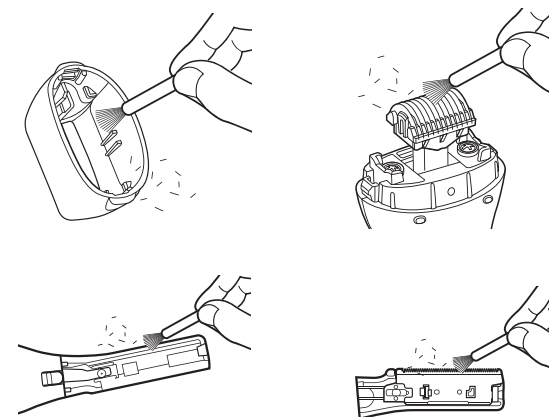


#### ► After wiping off water drops with a towel

Let them dry naturally.  
Remove the head to dry it quicker.

### Brush cleaning

Clean the hair dust with the cleaning brush.



### Storing

Attach the attachment or the cap to the head.

### Troubleshooting

If the problems still cannot be solved, contact the store where you purchased the appliance or a service center authorized by Panasonic for repair.

#### The appliance is not cutting as well as before.

- Replace the blade.
- Guidelines for replacement

Bikini shaver head	Outer foil	Approximately 1 year
	Inner blade	Approximately 2 years
Bikini trimmer head		Approximately 3 years
Body trimmer head		Approximately 1.5 years

- Replace with a new battery.
- Clean the hair dust.

#### The appliance is not working.

- Make sure the battery is installed correctly.
- Replace with a new battery.
- Clean the hair dust.

### Specifications

Power supply	Dry-cell battery
Battery type	One LR6 (AA) alkaline battery • Sold separately
Airborne Acoustical Noise	62 (dB(A) re 1 pW)

This product is intended for household use only.

#### Disposal of Old Equipment Only for European Union and countries with recycling systems



This symbol on the products, packaging, and/or accompanying documents means that used electrical and electronic products must not be mixed with general household waste. For proper treatment, recovery and recycling of old products, please take them to applicable collection points in accordance with your national legislation. By disposing of them correctly, you will help to save valuable resources and prevent any potential negative effects on human health and the environment. For more information about collection and recycling, please contact your local authority.

Penalties may be applicable for incorrect disposal of this waste, in accordance with national legislation.

#### Authorized Representative in EU:

Panasonic Marketing Europe GmbH  
Panasonic Testing Centre  
Winsbergring 15, 22525 Hamburg, Germany

#### Importer:

Panasonic Marketing Europe GmbH  
Hagenauer Strasse 43, 65203 Wiesbaden, Germany

#### Manufactured by:

Panasonic Corporation  
1006, Oaza Kadoma, Kadoma City, Osaka, Japan