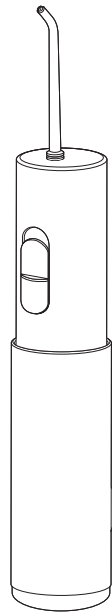


Panasonic®

Operating Instructions
(Household use) Portable Oral Irrigator
Model No. EW-DJ11



Thank you for purchasing this Panasonic product.
Before operating this unit, please read these instructions completely and save them for future use.

Safety precautions

To reduce the risk of injury, loss of life, electric shock, fire, and damage to property, always observe the following safety precautions.

Explanation of symbols

The following symbols are used to classify and describe the level of hazard, injury, and property damage caused when the denotation is disregarded and improper use is performed.

	WARNING	Denotes a potential hazard that could result in serious injury or death.
	CAUTION	Denotes a hazard that could result in minor injury or property damage.

WARNING

- **Do not store within the reach of children or infants. Do not let them use it.**
 - Doing so may cause an accident or injury.
- **Immediately stop using if there is an abnormality or malfunction.**
 - Failure to do so may cause injury or fire.
- **This appliance is not intended for use by persons (including children) with reduced physical, sensory or mental capabilities, or lack of experience and knowledge, unless they have been given supervision or instruction concerning use of the appliance by a person responsible for their safety.**
 - Children should be supervised to ensure that they do not play with the appliance.
 - Failure to do so may cause an accident or injury.

CAUTION

- **Do not modify, disassemble or repair.**
 - Doing so may cause an accident or injury.
 - Contact an authorized service centre for repair.
- **People who are unable to operate should not use this appliance.**
- **People with weak oral senses should not use this appliance.**
 - Doing so may cause injury or damage to teeth and gums.
- **Never use for a purpose other than oral cleaning.**
 - Doing so may cause an accident or injury when the stream of water is pointed toward the eyes, nose, ears, tongue, or throat.
- **Do not fill the tank with water warmer than 40 °C.**
 - Doing so may cause burns.
- **Do not share the nozzle with your family or other people.**
 - Doing so may result in infection or inflammation.
- **Do not drop the product or subject it to shock.**
 - Doing so may cause injury.
- **The batteries' supply terminals are not to be short-circuited.**
 - Doing so may cause burns or injury.
- **People who may have periodontal disease, have teeth being treated, or concerned about symptoms in their mouth should consult a dentist before use.**
 - Failure to do so may cause injury or damage to teeth and gums.
- **After use, clean the main body, the tank and the nozzle and dry them.**
 - Failure to do so may cause damage to your health due to propagation of mold and bacteria.

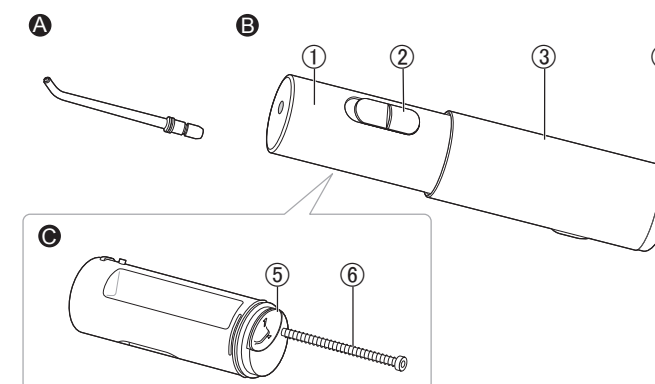
CAUTION

- **Always follow the cautions printed on the alkaline batteries.**
- **Check the polarity of the alkaline batteries (+ and -) and install them correctly.**
- **Do not mix new and old alkaline batteries or different types of alkaline batteries.**
- **Remove the alkaline batteries immediately and dispose of them safely when they are discharged.**
- **Remove the alkaline batteries when not using the appliance for an extended period of time.**
- **Please use the alkaline batteries by the recommended use-by date.**
- **Non-rechargeable batteries are not to be recharged.**
 - Failure to do so may cause injury or surrounding contamination due to heat generation, bursting, or leakage of the alkaline batteries.

Intended use

- **Do not fill the tank with anything other than tap water or lukewarm water (e.g. salt, mouth rinse or chemicals etc.).**
 - Doing so may cause a malfunction.
- **Do not dry the main unit with a dryer or fan heater.**
 - Doing so may cause malfunction or deformation of the parts.
- **After use, store the appliance in a place with low humidity.**
 - Putting it in a bathroom or the like may cause a malfunction.

Parts identification



A Regular nozzle

- The nozzle is a consumable.

B Main unit

- ① Main body
- ② Switch [0/1/2]
- ③ Tank
- ④ Bottom cover

C Back of the main unit

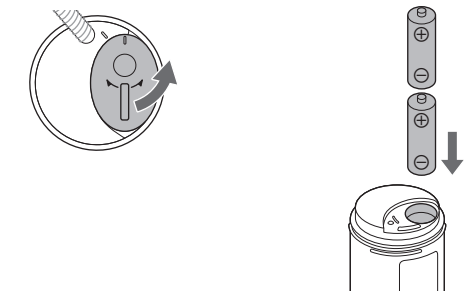
- ⑤ Battery cover
 - Alkaline battery is not supplied. Please buy it separately.
- ⑥ Water suction hose

There may be moisture inside the main unit (tank and water suction hose etc.) left from the distilled water used for product testing.

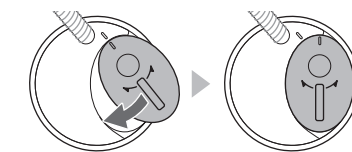
Installing the alkaline batteries

- Keep your hands and the main body dry.
- Make sure that the switch is set to "0".

1. Pull the main body and remove it from the tank.
2. Install the alkaline batteries.
 - ① Remove the battery cover.
 - ② Insert the batteries.



- ③ Align the battery cover with the battery compartment, and attach the battery cover by sliding it into place. (Make sure that the battery cover and the battery compartment are firmly installed and there is no gap.)



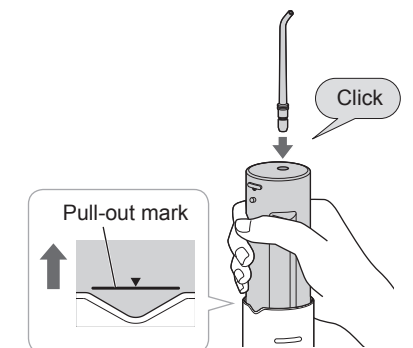
3. Install the tank.

Note

- Use only LR6 (AA Alkaline battery), otherwise the power or number of uses may vary.

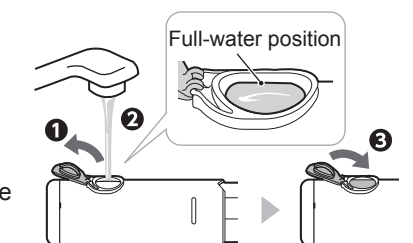
Filling the tank with water

1. Pull out the main body until you see the "▼" mark.
2. Install the nozzle while holding the main body.
 - Press in the nozzle firmly until a "click" is heard.



3. Add water.

- Always use fresh tap water or lukewarm water.
- If you feel the water is cold, use lukewarm water with a temperature of up to 40 °C.



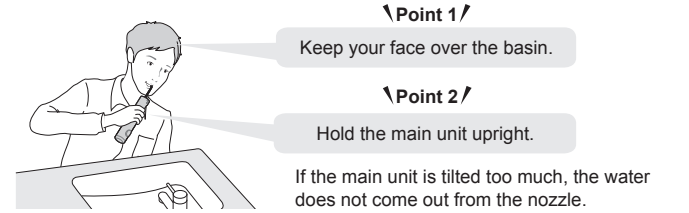
Panasonic Corporation
<https://www.panasonic.com>
© Panasonic Corporation 2025

Printed in China
EW970DJ1101541 Y0325-0

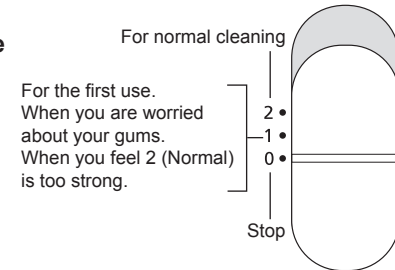
How to use

It is recommended to clean inside your mouth with the water jet after brushing your teeth.

- The appliance may not operate in an ambient temperature approximately 5 °C or lower.
- It can also be used in a bath.



- Place the nozzle in your mouth, and close your mouth gently.
- Turn on the switch. (Select a water pressure level.)



- Do not press the tip of the nozzle hard against the teeth or gums.
- Do not operate when the tank is empty except to drain the water from the appliance.
- Doing so could result in malfunction.

- When you have finished using this application, turn off the switch (while keeping the nozzle in your mouth).

Points of care

Change the way you use and move the appliance depending on the purpose and the area you want to clean.

Interdental cleaning



- Direct the water jet onto the space between the teeth.
- Direct water jet onto the front and rear of the teeth.

Periodontal pocket cleaning



- Direct the water jet onto the space between the teeth and gums.
- Slowly shift the water jet along the gums.
- Clean the front and rear sides of the teeth as well as behind the molars.

▶ About tooth tartar

It is hard to remove tooth tartar or dental calculus attached to the tooth surface just by a water jet, so a toothbrush is required to brush the teeth.

It is recommended to clean inside your mouth with the water jet after brushing your teeth.

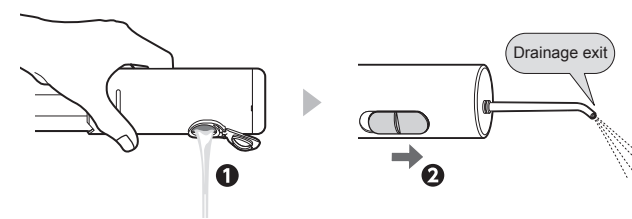
▶ About bleeding gums

Initially bleeding may occur even with healthy gums. This is caused because the gums are not used to such stimulation. The bleeding will normally stop within 1 or 2 weeks of use. There may be a problem with the gums (periodontal disease, etc.) if the bleeding continues for over 2 weeks. In such cases, stop using the appliance and consult a dentist.

After use

Please clean the appliance after each use.

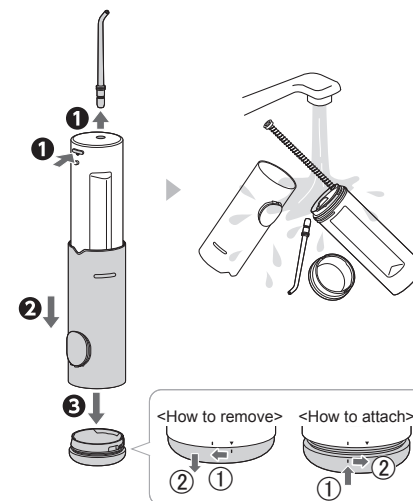
1. Drain the water.



- Dispose of the water after each use.
- Turn on the switch.
 - Turn the switch off when no more water comes out.

2. Wash with water.

- Remove the nozzle while pressing the button.

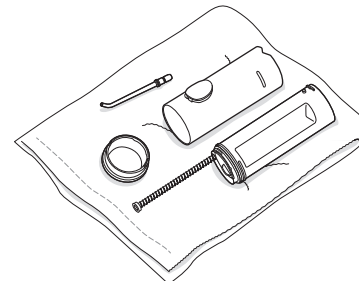


- Remove the tank (by pulling it strongly).

- Remove the bottom cover.

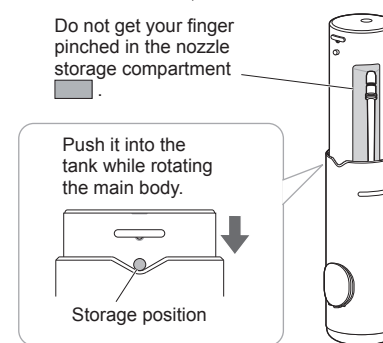
- The tank and the bottom cover can be washed in a dish washer.

3. Dry it.



4. Install the tank back, and store the appliance.

- Attach the bottom cover.
- Store the nozzle.

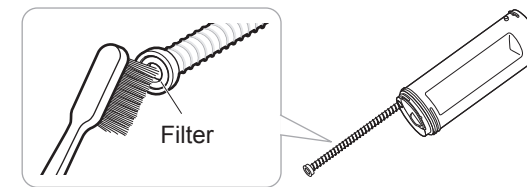


Notes

- Do not use thinner, benzene, alcohol or other chemicals to clean the appliance.
- Doing so may result in malfunction, cracking or discoloring of the parts.
- Do not wash the main body or the nozzle with lukewarm water above 50 °C.
- Use neutral kitchen detergent and rinse well with water to ensure no detergent remains after cleaning.

If the filter is clogged

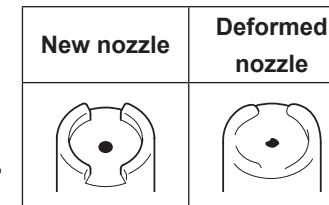
Rub the filter (the tip of the water suction hose) gently with a soft brush.



Changing the nozzle (Sold separately)

Replacement

- The replacement cycle is about 6 months due to hygiene reasons.
- Please replace the nozzle if the tip of the nozzle gets deformed, even within 6 months.



Part number	Replacement Nozzle for EW-DJ11	
WEW0987	Regular nozzle	

Troubleshooting

Problem	Probable cause and action
The water jet is poor.	The filter is clogged. → Remove the dirt from the filter. (See above.)
	The nozzle is clogged. The outlet of nozzle is squashed. → Replace the nozzle. (See above.)
No water comes out.	The main unit is tilted too much. → Please use it upright.
Water leaks from the bottom cover.	The rubber ring of the bottom cover is not installed properly. → Please install it with the convex part (a) facing outward.
The appliance does not operate.	Batteries are not inserted correctly. → Insert the batteries correctly. (See the "Installing the alkaline batteries" section.)
	Batteries are dead. → Replace with new batteries.
	The battery fluid leaks out. → Contact an authorized service centre for repair.
The tank cap (b) comes off.	It may come off when opened. → Align it with the axis and push it in.

If the problems still cannot be solved, contact the store where you purchased the appliance or a service centre authorized by Panasonic for repair.

Specifications

Power supply	Alkaline Battery
Battery	Two LR6 (AA Alkaline Battery) (sold separately)
Operating time	Approx. 20 minutes (When two Panasonic LR6 (AA Alkaline Battery) are used, the water pressure level is set to 2, and the room temperature is 20 °C)
Tank volume	Approx. 150 mL (For approx. 35 seconds of operation when the water pressure level is set to 2)
Dimensions	Approx. 30.9 cm (or 23.4 cm without nozzle) (H) x 5.2 cm (W) x 5.7 cm (D) In storage: Approx. 15.4 cm (H) x 5.2 cm (W) x 5.7 cm (D)

This product is intended for household use only.

MEMO