

297

Panasonic®

INSTALLATION GUIDE
N-SK4W
N-SK4BVT

Warning

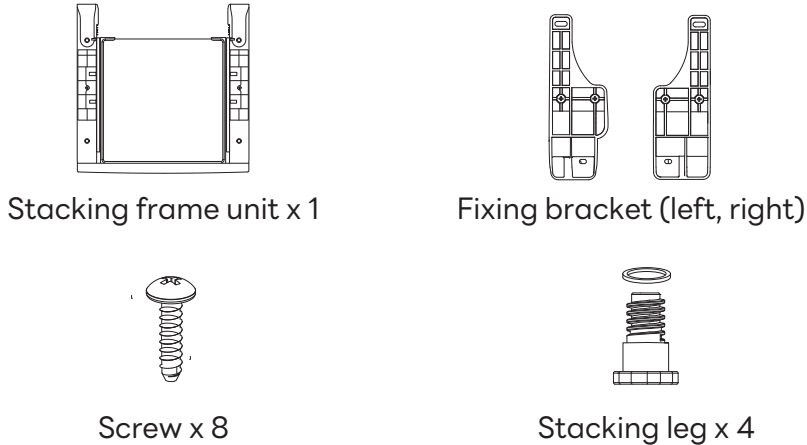
- To prevent Electric Shock Hazard, please disconnect power before installing. Failure to do so could result in serious injury or death.
- Potential Personal Injury. Due the weight and size, the unit should be placed in position by two people. It is recommended to wear gloves for installation. Failure to follow this warning could result in personal injury, death or property damage.
- Dryer must be securely attached to the washer. **DO NOT** place the washer on top of the dryer. Failure to follow this warning could result in personal injury, death or property damage.

BEFORE YOU BEGIN

Read these instructions completely an carefully.

- IMPORTANT** - This stacking kit is for stacking installation of dryer on top of Front Load washing machine only. This is to ensure safety where the dryer may become unbalanced during operation or in the event of an earthquake.
 - IMPORTANT** - Please ensure to keep all tools and parts away from babies and small children due to choking hazards
 - Note to Installer** - Be sure to leave these instructions with the Consumer.
 - Note to Consumer** - Installation must be performed by a proper installer. Keep these instructions for future reference.
 - Service must be performed by a qualified installer.
 - Proper installation is the responsibility of the installer.
 - IMPORTANT** - Do not stack the washing machine on top of the dryer.
- This is a recommended accessory of Panasonic Dryer NH-EH**JD1**
Apply for Panasonic Washer NA-***FR1/NA-***FC1/ NA-***FA1/ NA-***FW1

List of parts



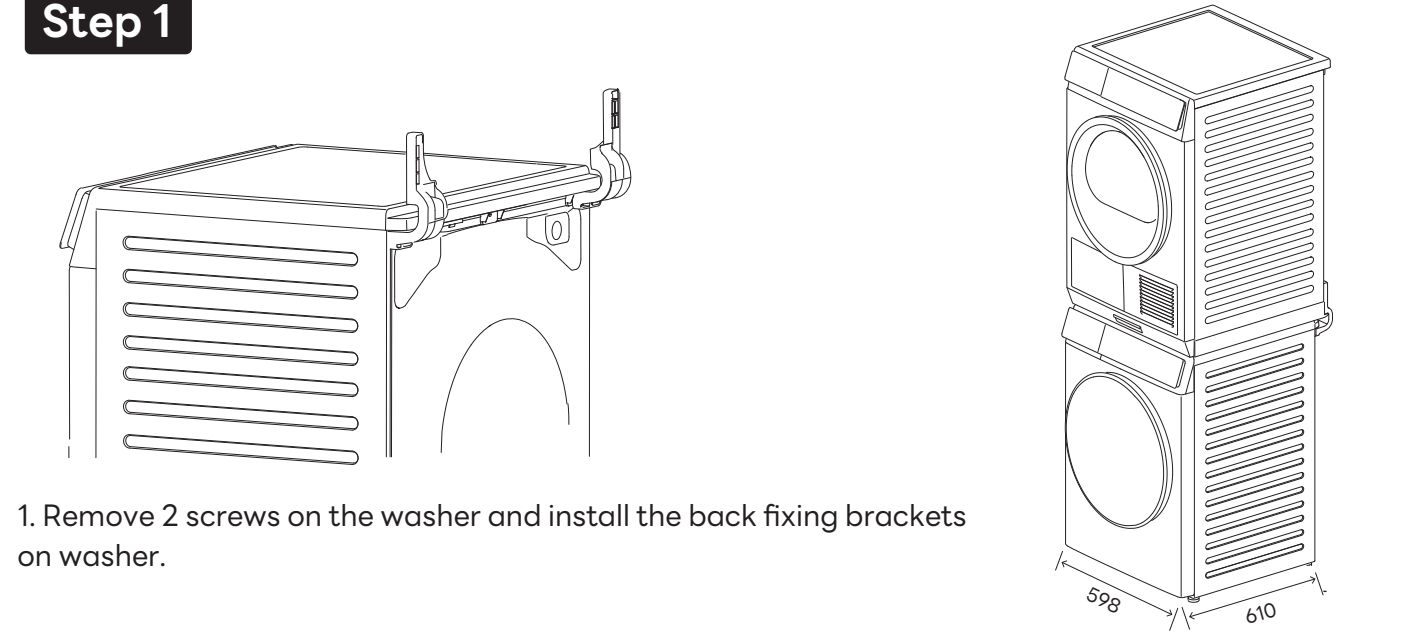
TOOLS YOU WILL NEED



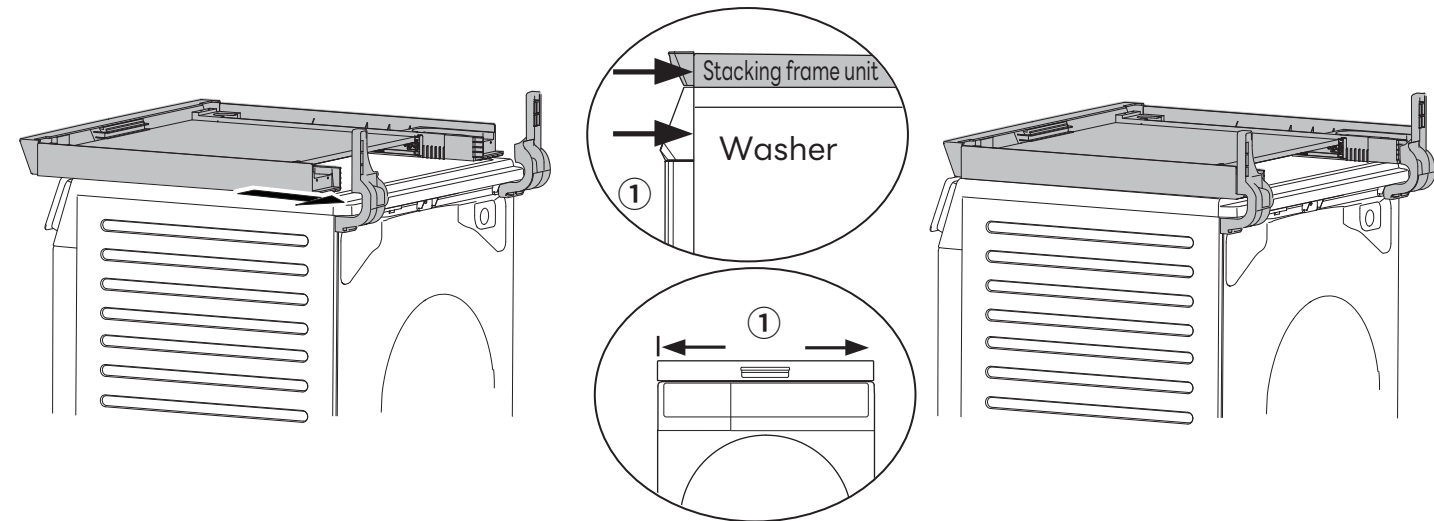
INSTALLATION PREPARATION

Remove the packaging.
Flatten the product carton to use as a pad to lay the dryer down on its side.Continue using the carton to protect the finished floor in front of the installation location.

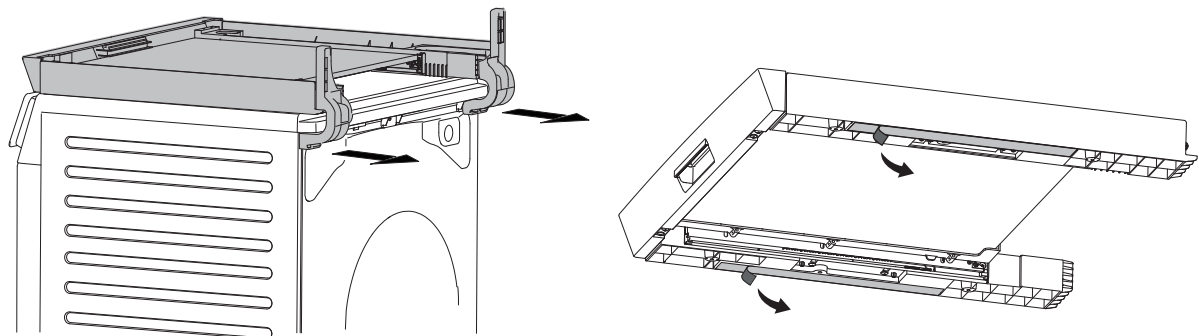
Step 1



1. Remove 2 screws on the washer and install the back fixing brackets on washer.



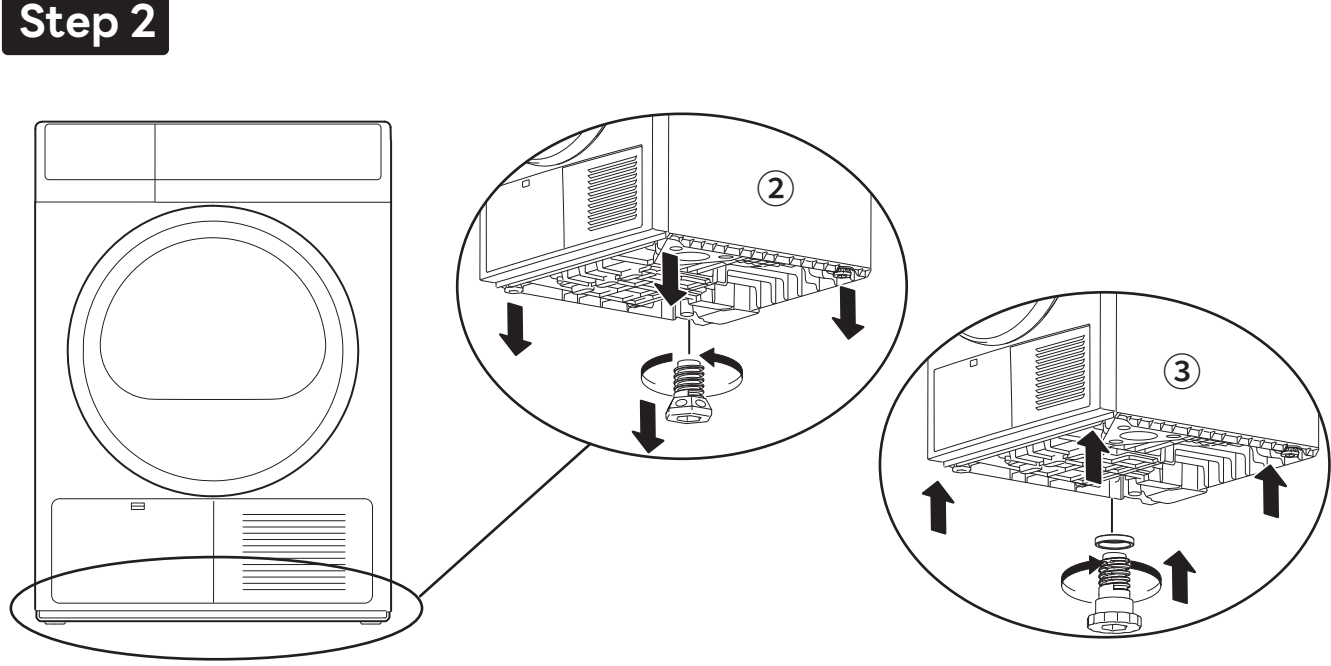
2. Align Stacking frame unit with the back fixing brackets. Make it centered on the top board of the front load washer and aligned on both sides at ① as shown in the figure.



3. Remove 2 screws on the washer and remove the back fixing brackets of the washer. Remove the double-sided tape under the stacking kit. Then remake it centered on the top cover of the washer and aligned on both sides at ① as shown in the figure.

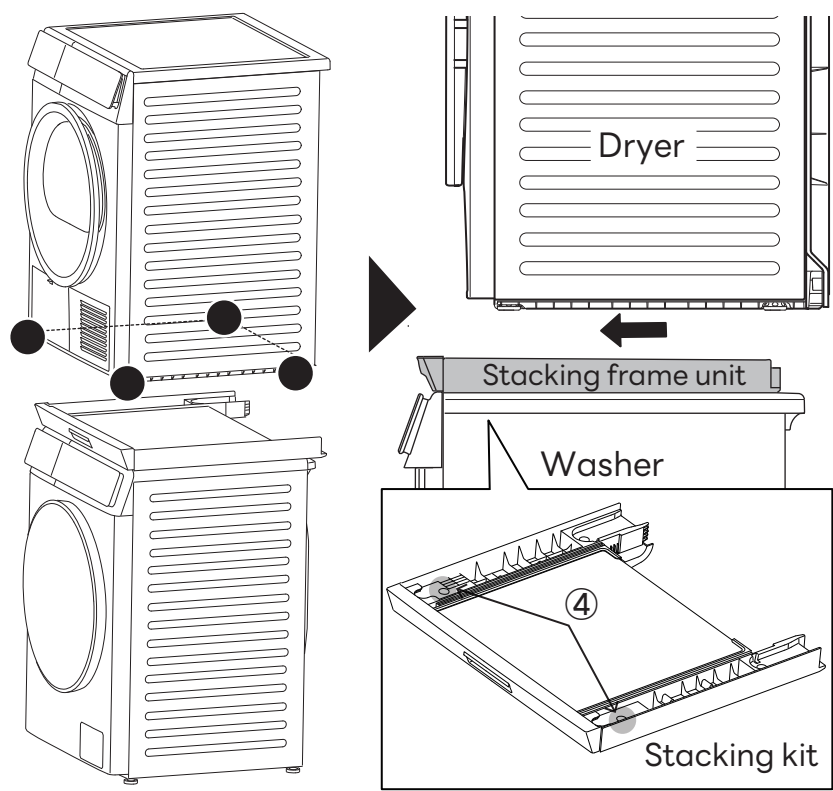
正面

Step 2



1. First remove 4 legs of dryer at ② as shown in the figure.
2. Assemble 4 legs and gaskets in the accessories, then install and tighten them on the base of the dryer at ③ as shown in the figure.

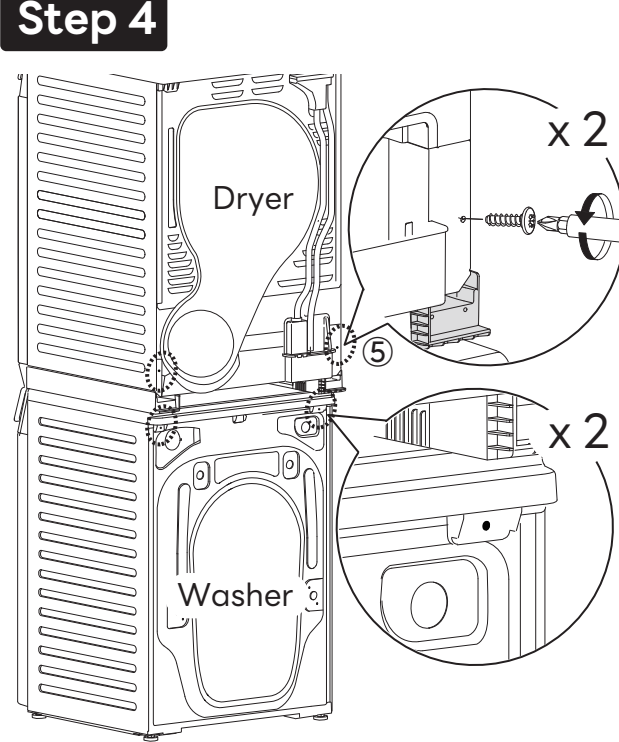
Step 3



1. Lift the dryer by two people and align the front legs of the dryer on the Stacking kit at ④ as shown in the figure.
2. Push the dryer into the slot on the Stacking kit.

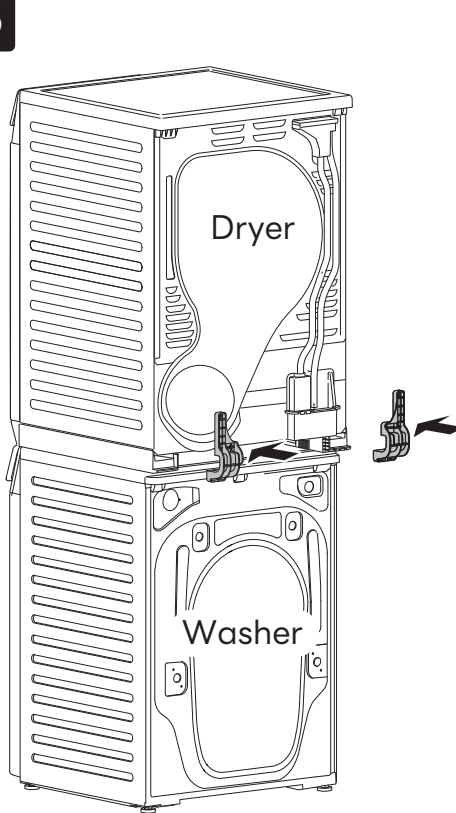
背面

Step 4



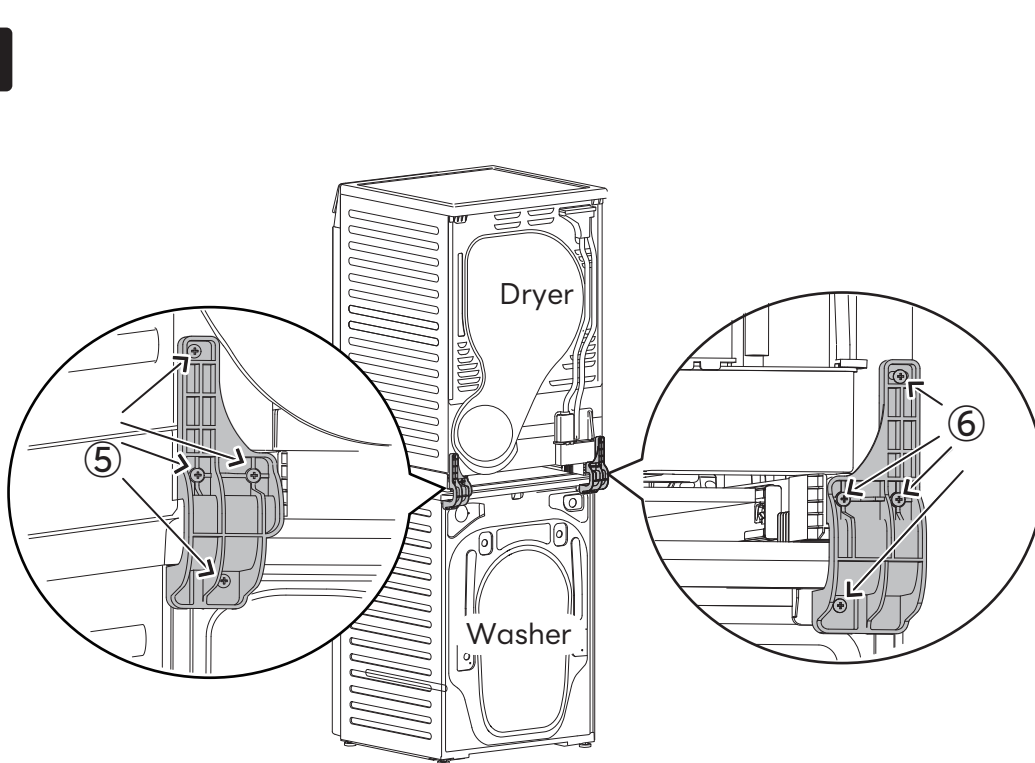
1. Remove 2 screws on the back of the dryer at ⑤ as shown in the figure.
2. Remove 2 screws from the top cover of the washing machine.

Step 5



1. Install the back fixing brackets (both left and right).

Step 6



1. On the both sides, fix 4 screws in the accessories at ⑤.
2. On the both sides, fix 4 screws at ⑥.

宁波吉德电器有限公司

材质
工艺
要求

80g双胶纸

项目名称

安装指南

版本号

V 0.1

编码

10022010

设计

张春梅

标准化

5g

制图

审核

审核

批准

工艺

日期

2024.01.03

比例

1:1

单位

mm