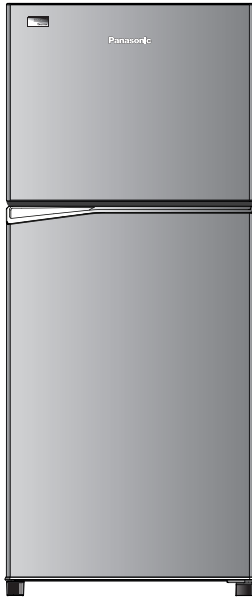




# Panasonic®

## Operating Instructions Refrigerator

For Household Use



Model No.: **NR-TV341**

### Contents

|  |    |
|--|----|
| • Safety precautions.....                    | 2  |
| • Usage precautions.....                     | 4  |
| • Installation .....                         | 6  |
| • Parts identification .....                 | 7  |
| • Temperature control.....                   | 7  |
| • ECONAVI operation.....                     | 8  |
| • Usage tips.....                            | 8  |
| • How to make ice cubes with ice maker ..... | 10 |
| • How to clean the refrigerator .....        | 10 |
| • Troubleshooting.....                       | 13 |
| • Specifications .....                       | 15 |

#### ■ NON-CFC

This unit uses totally **NON-CFC MATERIALS** both for refrigerant (R600a) and for insulation (Cyclo-Pentane). So, this refrigerator does not damage the Earth's ozone layer.

Thank you for purchasing the Panasonic product.

- Please read these instructions carefully and follow safety precautions on page 2-5 before using this product.
- Please make sure the date and name of store of purchase are stamped in warranty card and keep it with this operating instructions.

AU/NZ

ARAH1E203190  
P0822-0  
Printed in Vietnam

## Safety precautions

Please be sure to follow these instructions.



### WARNING

This sign means: It may lead to a serious injury or death.



These signs mean prohibited action.



This sign means required action.



This sign means the appliance must be earthed to prevent electric shock.



### CAUTION

This sign means: It may result in injury or property damage.



iso-butane

Risk of fire / flammable materials

Otherwise it may cause a fire, injury, electrical shock.



## WARNING

### When using...



- **Do not** damage the cooling circuit (piping on the back).
- **Do not** touch the compressor and pipes, because of high temperature, there is a risk of burn injury.
- **Do not** let any children hang onto the refrigerator's door, it may cause it to fall on the child.
- **Do not** place any water container on the top of the refrigerator in case the spilling water causes electrical shock or combustion.
- **Do not** install multiple portable socket-outlets or portable supplies at the rear of the appliance.
- Keep ventilation openings, in the appliance enclosure or in the built-in structure, clear of obstruction.



- This appliance is not intended for use by persons (including children) with reduced physical, sensory or mental capabilities, or lack of experience and knowledge, unless they have been given supervision or instruction concerning use of the appliance by a person responsible for their safety.
- Children should be supervised to ensure that they do not play with the appliance.

### When recycling the product...



- Before taking the refrigerator to be recycled, please remove all the door opening seal to prevent locking a child in it.
- The warning labels mentioned above should be kept throughout the life of the refrigerator.
- The operating instructions should be handed over to any person who would use or handle the refrigerator whenever the refrigerator would be transferred to another location and delivered to a recycling plant.
- Regarding to local laws, Cyclo-Pentane is used for insulation of this refrigerator. When you throw away this unit, please discard it by proper method and do not dispose it by burning.

Otherwise it may  
cause a fire, injury,  
electrical shock.



# WARNING

## For power plug and cord...



- **Do not** plug or unplug with wet hands.
- **Do not** let the cord or plug be damaged.



- Disconnect power plug when cleaning.
- Plug into a wall outlet of the rated voltage on its own with the rated current and insert plug fully.
- Reserve one socket for the refrigerator only. Avoid connecting many appliances to the same socket and unroll through the length of cord.
- Remove dust periodically from the power plug.
- If the supply cord is damaged, it must be replaced by the manufacturer, its service agent or similarly qualified persons in order to avoid a hazard.
- If you detect burning smell, disconnect the power plug and ventilate the kitchen.
- **Stop** using the refrigerator and unplug the unit immediately if there is an abnormality or failure. Abnormality and failure examples:
  - Power cord or plug is abnormally hot.
  - Power cord is deeply cut or deformed.
  - There is burning smell.
  - You can feel tingling electricity.

## In case of emergency...



- Maintenance work only be carried out at workshop by well-trained maintenance worker.



- **Do not** store explosive substances such as aerosol cans with a flammable propellant and chemicals or scientific specimens in the appliance.
- **Do not** use electrical appliances such as a deodorizer in the refrigerator. Leaked refrigerant may catch fire from a spark of the electrical contacts and may cause an explosion.
- **Do not** use electrical appliances inside the food storage compartments of the appliance, unless they are of the type recommended by the manufacturer.



- **Do not** disassemble, repair or modify the refrigerator by yourself. If you want to repair the refrigerator, please consult your dealer or authorized service center.
- **Do not** use mechanical device or other means to accelerate the defrosting process, other than those recommended by the manufacturer.

## When installing...



- Fix the refrigerator to avoid danger due to unbalance.
- When positioning the appliance, ensure the supply cord is not trapped or damaged.



- Ensure that the refrigerator is plugged into an earthed mains socket.

Otherwise it may cause injury, accidents.

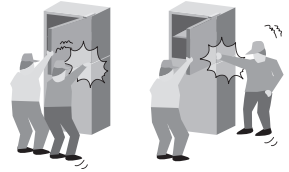


## CAUTION

### When opening/closing the doors...



- While opening the refrigerator, be careful not to pinch other one's hand holding the door.
- Mind the gap between the doors. They may nip your hand while closing the door.



### When storing food...



- **Do not** freeze glass bottles, that there is a risk of injury. (If the liquid in a glass bottle is frozen, then the bottle may break and you may be injured.)
- **Do not** add a high impact on glass trays. (Otherwise those glass trays may break and you may be injured.)



### When moving the refrigerator...



- Hold the refrigerator tightly when transporting.
- Apply protective covering, etc. to floors with a fragile surface.
- When transporting, use straps to secure the refrigerator doors and avoid letting the doors open by itself.
- Do not place the refrigerator on its side when transporting, as this may cause damage to the refrigerator.
- After installation, wait at least 4 hours before plugging in the power to ensure that the gas and oil in the compressor are in a stable state.

## Usage precautions

### When opening/closing the doors...

- **Do not** refrigerate items which are bigger than tray or shelf, as the door will not close completely causing leakage of cool air.
- **Do not** open refrigerator frequently or leave it open for long time in order to prevent water dripping inside and waste energy.
- Frequently check the door opening seal, it must be closed to the refrigerator's body completely.

### When cleaning...

- **Do not** clean the refrigerator with chemical substance or liquid. It will cause damage and have corrosion on the surface.
- Clean the pan water evap located over the compressor at the back of the refrigerator every three months to prevent the odour generated from humidity.



# Usage precautions

## When using:

- When the plug is disconnected, leave it for 5 minutes before plugging again. If not, the compressor may not work.
- Adjust the temperature according to the actual operating condition for energy saving.
- The humidity inside the fresh case may condense so wipe it with a cloth periodically. Clean the fresh case once a month.
- If you will not be at home for several days and there are nothing refrigerated in the refrigerator, the plug should be disconnected for energy saving. When the refrigerator is not used for several days, it is necessary to take out all remaining food inside the refrigerator, clean and open the doors for a few hours to let the moisture inside the refrigerator dry out, avoiding mold and oxidation of components.
- The outside wall of refrigerator cabinet may sometimes get warm, especially just after installation. This is quite normal, and is due to the built-in Mullion Dryer Pipe which prevents sweating and radiates heat.
- When humidity is high, e.g. during rainy-season, condensation may appear on the surface of cabinet, especially around the door seal gasket. Wipe off the condensed water with a clean cloth.
- **Do not** keep the door open any longer than necessary, particularly in hot, humid weather.
- The top of the refrigerator is made of steel in order to prevent fire caused by external influences. **Do not** put things on top of the refrigerator to ensure this factor.



## When storing food...

- **Do not** place warm/hot foodstuff in the refrigerator.
- **Do not** overload the refrigerator. Gap must be provided between foodstuffs to maintain the cooling effect.
- Store fruits and vegetables in vegetable case, where trapped moisture helps preserve food quality for longer time periods.
- Drinking water, beverage bottles should be sealed to prevent odor contamination.
- Foodstuff such as vegetable, fruits and fresh food should be wrapped or pack in box before freezing and refrigerating.
- Put the food such as meat or fish in the freezer if you want to store for an extended period.
- Cover juicy food with tight lids, plastic film or foil.
- Cool hot dishes in room temperature before placing them in your refrigerator.



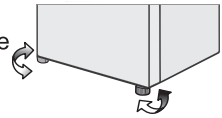
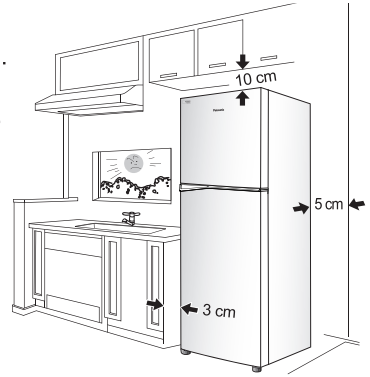
# Installation

## The distance requested for installation

- The top of the refrigerator and the ceiling at least 10 cm.
- The back of the refrigerator and the wall at least 5 cm.
- The sides of the refrigerator and the walls at least 3 cm.

## Area around the installed unit

- **Do not** locate the refrigerator in a humid place as rust may form and may cause electric leakage.
- **Do not** locate the refrigerator exposing to direct sunlight as the heat and sunlight will increase the temperature.
- **Do not** locate the refrigerator near heat source such as cooking stove or oven.
- **Do not** block the openings around the refrigerator.
- The refrigerator must be located in the place where there is good air circulation.
- In case of placing the refrigerator on an uneven surface, adjust the adjustable bolt to make the refrigerator stands stably.



## Moving or shifting

- When moving or shifting the refrigerator, remove ice cube tray, box ice tray, pan water evap etc. and check to be sure that there is no water in the refrigerator.

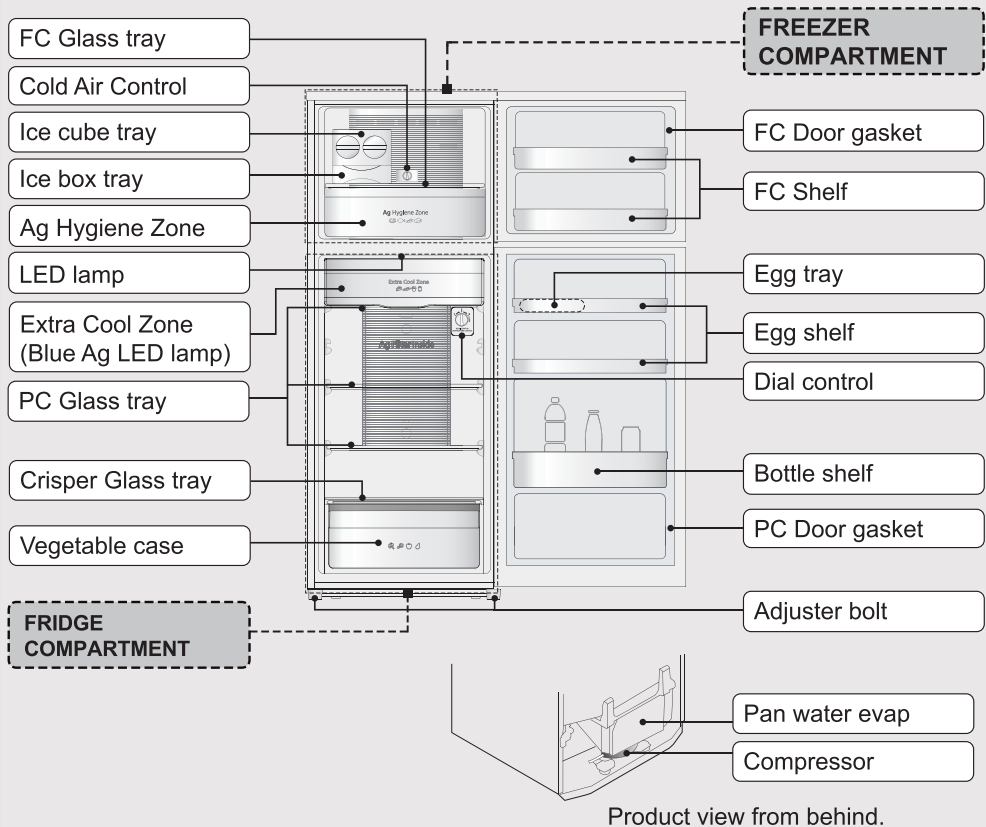
## Power cord setting

- To bring power cord for use, pan water evap from left should be lifted up. Then bring the power cord out and then insert pan water evap into the block by pressing at both the sides.

## LED lamp and grounding

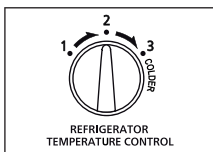
- The refrigerator LED lamp, specially designed for this refrigerator, does not function on individual replacing. If you need replacement, please contact Panasonic Service Center.
- If there is no grounding wiring plug in refrigerator, it should be connected with grounding connection to prevent electrical hazard from electric leakage.

# Parts identification



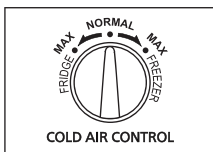
# Temperature control

Operate the REFRIGERATOR TEMP. CONTROL when changing the temperature of FRIDGE COMPARTMENT.



| TEMP. CONTROL REFRIGERATOR COMPARTMENT |  |
|--|--|
| "1"                                    | Higher than "2" by approximately 2°C ~ 3°C |
| "2"                                    | Approximately 3°C ~ 5°C                    |
| "3"                                    | Lower than "2" by approximately 2°C ~ 3°C  |

Operate the COLD AIR CONTROL when changing the cold air condition.



| COLD AIR CONTROL |                                     |
|------------------|-------------------------------------|
| "FRIDGE MAX"     | FRIDGE COMPARTMENT takes priority.  |
| "NORMAL"         | Cold air condition is normal.       |
| "FREEZER MAX"    | FREEZER COMPARTMENT takes priority. |

**Note:** Temperature of Refrigerator depends on environment, room temperature and food storage quantity.

# ECONAVI operation

The refrigerator detects the opening and closing of the refrigerator door to control operations automatically to ensure maximum energy saving.\*1

## ■ ECONAVI operation

- The refrigerator learns the lifestyle patterns of your family from door opening and time periods of infrequent use to maximise energy efficiency.
- The refrigerator learns your lifestyle patterns from the previous 3 weeks of use and uses that data from the 4th week onwards.

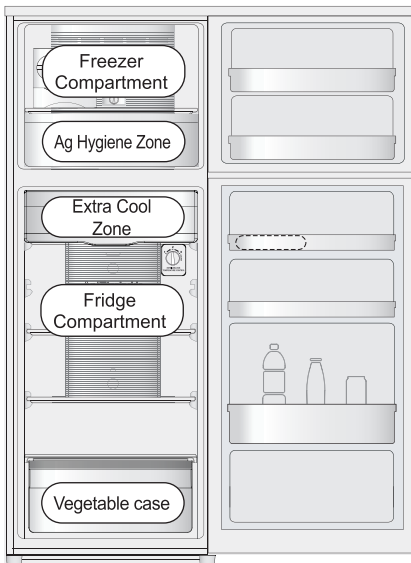
## ■ Settings for enabling ECONAVI operation

- ECONAVI operation is automatically enabled when the temperature control for Fridge compartment is set to “2” (Temperature approximately 3°C ~ 5°C).
- It is not possible to force to start of the ECONAVI mode.

### Remark:

\*1 The effectiveness of the ECONAVI mode is dependent on the ambient temperature and the number of times the refrigerator door is opened and closed and the state in which food is stored.

# Usage tips



### Freezer Compartment

#### “If storing food for an extended period...”

For storage of frozen or dried foods.



### Ag Hygiene Zone

#### “Fresh food...”

For storage of fresh foods such as meat or fish to avoid the odors spread out the freezer compartment.



### Fridge Compartment

#### “Food and drinks readily served...”

For regular storage of food and drinks or temporary storage of those to be served soon.



### Extra Cool Zone

#### “Dairy products...”

For dairy products, etc. that perish easily but whose quality changes if frozen.



### Vegetable case

#### “Fruits and vegetables”

A rather high humidity keeps fruits and vegetables fresh and juicy.





# Usage tips



## Storage using hermetically sealed containers is recommended!

To prevent the interior from being discolored!



- Cut citrus fruits  
(→ The plastic will be discolored white.)

To prevent odors from spreading!



- Garlicky or other strong smelling vegetables  
(→ Odors will spread to other nearby food.)

## Using Extra Cool Zone

### ■ When you do not want to freeze food.

- This room is suitable for storing chilled food or dairy products.

[Example of food to store]

- Chilled food
- Boiled noodle
- Fresh cream
- Cheese
- Yogurt



Door Extra Cool Zone



Glass Tray Cool Zone

- Depending on food, it may be frozen partly. Change the position of food or set the temperature setting of the Fridge compartment to “2” (Temperature approximately 3°C ~ 5°C).

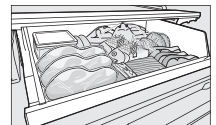
### Attention:

- If you feel that the refrigerator does not cool enough or it is too cold, increase or decrease its temperature by following steps on page 7.
- When storing meat, it should be stored by using tightly sealed containers to prevent strong smelling spreading to nearby drink. They should not be stored over 1 week.

## Using Ag Hygiene Zone

### ■ When you want to store fresh foods such as meat or fish to avoid the odors spread out the Freezer compartment.

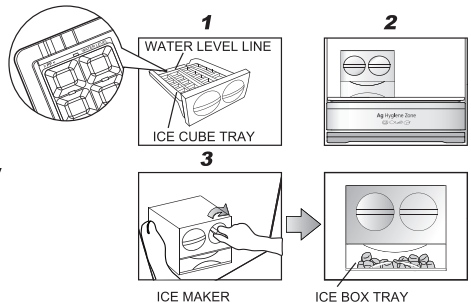
Temperature can be set to either “Fridge Max”, “Normal” or “Freezer Max” to fit the volume and type of food. (P. 7)



# How to make ice cubes with ice maker

## STEP

1. Fill water in the ice cube tray till the water level line.
2. Put ice cube tray inside Freezer room, wait until ice is made.
3. To remove ice cubes, suppress the frame with left hand and twist the dial ice cube tray clockwise with right hand. The ice cubes will drop into the Ice box tray.



### Remark:

- Don't pour water into Ice box for ice-making, otherwise the box may crack.

# How to clean the refrigerator

## 1 Interior cleaning

Wipe off the stain with warm water. When stains can not be removed easily, wipe them with warm water and soap by using a soft cloth. Then wipe the soap off using damp soft cloth.

## 2 Exterior cleaning

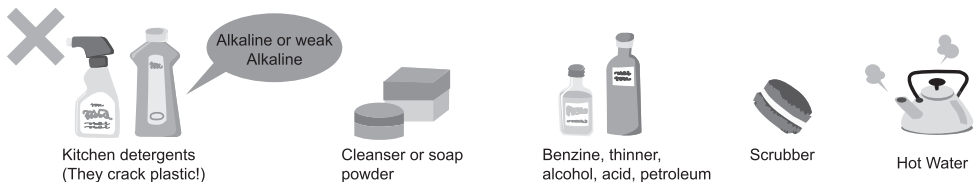
Cleaning by using soft cloth with warm water and soap. Then wipe off the soap with warm soft cloth.

## 3 FC/PC Door gasket

- Clean by wiping gently. This area, petroleum gel was applied to reduce the friction to the refrigerator body. Be careful not to wipe off them.
- The door opening seal is replaceable when reaching end of life. While cleaning, push it back to the groove if it comes off.



**Note:** Do not use the following items. (Otherwise, the surface will be scratched.)

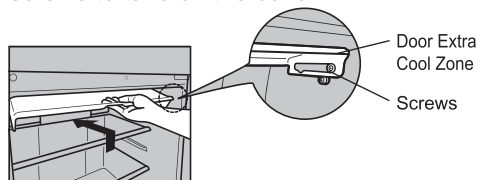


## Door Extra Cool Zone

Once every 3 months

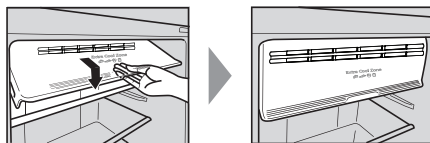
### ■ Removing

Lift up the door Extra Cool Zone and slide it into the above slot until it reaches the end of the stopper. Then remove screws to take off the cover.



### ■ Attaching

Insert the door Extra Cool Zone into its slot and tightening screws. Then slide it out and pull the cover down.

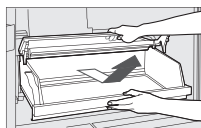


- Be sure to grab the cover with upturned hand. Otherwise, your hand may accidentally hit the refrigerator.

## Ag Hygiene Zone

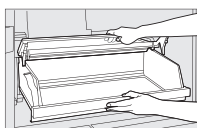
Once every 3 months

### ■ Removing



Pull out the case as far as possible. With lifting up the front, pull it out at an angle with holding the flap above the case.

### ■ Attaching



With holding up the flap, lift the back of the case and install it along the rails inside.

### Attention:

- When pull or attach Ag Hygiene Zone, be sure to grab its handle with upturned hand. Please refer to the above illustration. (Otherwise, FC cover case may accidentally hit your fingers.)

## PC/FC Glass tray, Crisper Glass tray

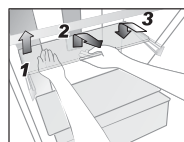
Once every 3 months

### ■ Removing

1. Lift the tray upward then pulling it forward until removing.
2. For tray cool zone, tilt the tray slightly upward for easier removing.

### ■ Attaching

3. Place tray on both supporters, then push until it reaches the end.



### Remark:

- When removing tray above Vegetable case, pull out the Vegetable case first and then follow to remove the tray as above details.
- In case of attaching the tray and it does not lock, make sure that you did not attach the wrong tray.
- Make sure that you don't attach the upper side of the tray downward.
- PC Glass trays can be used alternatively, but Crisper Glass tray should only be attached right above Vegetable case.

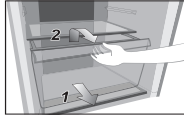
# How to clean the refrigerator

## Vegetable case

Once every 3 months

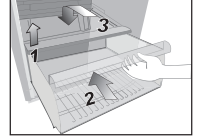
### ■ Removing

- 1 Pull the case until it reaches the end of stopper.
- 2 Raise up the front of case a bit and then completely take out.



### ■ Attaching

- 1 Keep the lid on the vegetable case lifting until case is attached.
- 2 Raise it up and place case on both supporters.
- 3 Push the case until it reaches the end.



## Egg shelf, Bottle shelf, FC Shelf

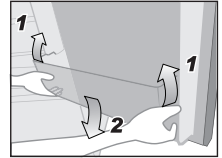
Once every 3 months

### ● Removing

1. Lift it upward, alternating between the right and left side.

### ● Attaching

- 2 Place it on both supporters, and then press until it reaches the end of supporters.

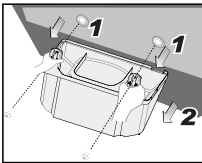


## Pan water evap

Once every 3 months

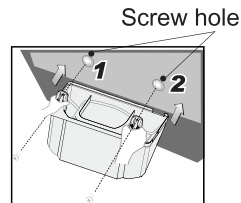
### ■ Removing

- 1 Remove the screws on both sides.
- 2 Take out the pan water evap.



### ■ Attaching

- 1 Place and adjust the pan water evap so that the pan water evap hole on the left side matches the screw hole on the back of the refrigerator. Fix the left part with screw.
- 2 Place and adjust the pan water evap so that the pan water evap hole on the right side matches the screw hole on the back of the refrigerator. Fix the right part with screw.



# Troubleshooting

Before you call for service, please check the following items:

**The refrigerator does not operate.**

- Check that the plug and its socket are in good condition.
- Check if there is any problem on main fuse and electrical system of the house.
- Check by unplug and wait for 5 minutes before plugging it back in.

**The refrigerator does not cool enough.**

- Check to be sure that the temperature control dial is at proper position.
- Check to see if the refrigerator is overloaded with stuff or there is any hot foodstuff refrigerated inside.
- Is the refrigerator exposed directly to sunlight or heat source?
- Is the refrigerator door completely closed?
- Is the refrigerator door opened frequently?

**Outside**

- When the air humidity is high, there is a chance that moisture will condense on the refrigerator surface, around the door gasket or on the door surface. This situation will stop if the air humidity decreases. Please wipe it up with dry cloth.

**Dew, ice appears.**

**Inside**

- Is the door closed firmly?
- Is the door being opened and closed too frequently?
- Condensation inside the refrigerator can also be caused by leaving high-humidity foods uncovered or unwrapped.
- When the humidity is high, the door is open for a long time, or when the refrigerator contains too much food or makes too much ice, frost may form inside the Freezer compartment. This is normal. Please wipe with dry and soft cloth.



**The refrigerator generates noise.**

- Check if the refrigerator is located on a stable floor or is installed properly.
- Check if there is any object in contact with the refrigerator.
- Cracking sound within caused by the parts adjusting temperature which is normal.
- After installation, the refrigerator may make loud noise.
- The noise will be less when the refrigerator has been cooled.
- There may be a whistling sound inside the refrigerator when opening and closing the door. This is caused by the air outside being drawn in through the pipe on the backside of the refrigerator to better balance the air circulation inside the unit.

# Troubleshooting

**Food becomes frozen.**

- Do you put the food near cold air holes?
- Do you adjust the temperature control at "Max"? Adjust to "Min"?
- Do you put food in Extra Cool Zone?

**The inside is smelling.**

- Do you store food with odor without wrapping it?

**The surfaces of the refrigerator is hot.**

- Because the refrigerator is equipped with the dew prevention and heat radiation tubes, the surfaces of the refrigerator get warmer when operating.
- The back and side plates may get warmer especially when starting up or if the door is frequently opened and closed.


**The normal sounds of refrigerator.**

- When the refrigerator starts operation, the sound like water flowing and boiling water is created. This is the sound of the cooling liquid.
- The noise is generated when the automatic defrost system operated.
- The dilatation of the details inside the refrigerator in the cooling process can cause sound "crack-crack".
- You may feel that the operation sound is larger because the compressor operates in high-speed under the following conditions: the refrigerator does not cool fully on the occasion such as using it for the first time, setting "Quick Ice/Freezing" mode, opening/closing the door too frequently, the surrounding temperature is high. The sound becomes more quiet after cooling fully.

**Lamp does not turn on.**

- Please contact Panasonic service center.

# Specifications

| Model No.   |              | NR-TV341  |
|---|--------------|---|
| Freezer Star Rating                               |              |  |
| Capacity (L)                                      | Total        | 306   |
|   | Freezer      | 82  |
|   | Refrigerator | 224   |
| Outside Dimensions<br>Width x Depth x Height (mm) |              | 601.5 x 657 x 1645  |
| Net Weight (kg)                                   |              | 52  |
| Refrigerant Type                                  |              | R600a   |
| Rated Voltage (V)<br>Rated Frequency (Hz)         |              | Refer to the rating label attached inside the cabinet.                            |

# Disposal



For the purpose of recycling to facilitate utilization of resources, please return this product to a nearby authorized collection center, registered dismantler or recycler, or Panasonic service center when disposing of this product.

Customer care number: 132600 (AU)  
09 272 0178 (NZ)

Please see the Panasonic website for further information on collection centers, etc. or call the customer care number.

<http://www.panasonic.com/au>

<https://www.panasonic.com/nz>

