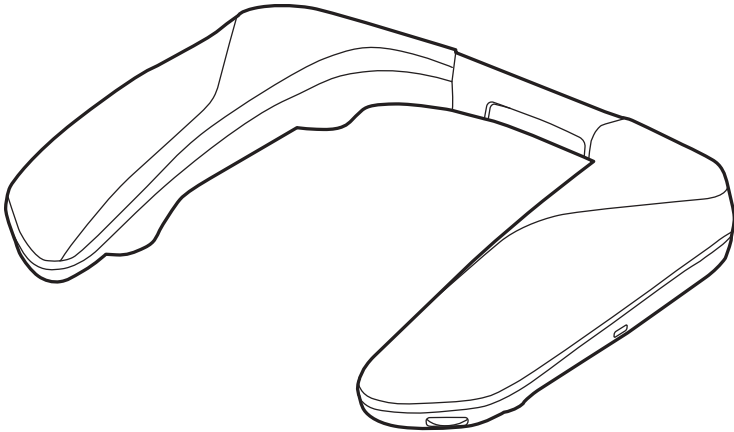


# Panasonic®

## Owner's Manual Wireless Neck Speaker System

Model No. **SC-GNW10**



**SOUND<sup>D</sup>SLAYER™**

Thank you for purchasing this product.

Please read these instructions carefully before using this product, and save this manual for future use.

# Safety precautions

## ■ Unit

### **WARNING:**

To reduce the risk of fire, electric shock or product damage,

- Do not expose this unit to rain, moisture, dripping or splashing.
- Do not place objects filled with liquids, such as vases, on this unit.
- Use the recommended accessories.
- Do not remove covers.
- Do not repair this unit by yourself. Refer servicing to qualified service personnel.

Avoid the use in the following conditions

- High or low extreme temperatures during use, storage or transportation.
- Disposal of a battery into fire or a hot oven, or mechanically crushing or cutting of a battery, that can result in an explosion.
- Extremely high temperature and/or extremely low air pressure that can result in an explosion or the leakage of flammable liquid or gas.

## ■ Places where you use or store the product

- This unit is for indoor use.
- Do not use or leave where the temperature is extremely high such as in locations exposed to direct sunlight or near heating devices.
- Do not use or leave in locations with a lot of dust.
- Do not use or leave in locations with a lot of vibration.
- Do not use or leave in locations with a lot of moisture, such as bathrooms.

## ■ Handling

- Do not drop, hit, or apply strong shocks. This may cause malfunction.
- Sound may be interrupted or you may hear noise if the plug tip is dirty. If this occurs, wipe the tips of the plug and plug adaptor clean with a soft dry cloth.

## ■ Built-in battery

- Do not heat or expose to flame.
- Do not leave the unit in a car exposed to direct sunlight for a long period of time with doors and windows closed.
- Do not expose to low air pressure at high altitudes.
- Do not expose to extremely low air pressure, as this may result in explosions or leakage of flammable liquids and gases.

This unit may receive radio interference caused by mobile telephones during use. If such interference occurs, please increase separation between this unit and the mobile telephone.

The symbols on this product (including the accessories) represent the following:

⎓ DC

🔌 Standby

---

# Table of contents

Safety precautions .....	2
<b>Before use</b>	
Accessories .....	4
Maintenance.....	4
Part names (Main unit).....	5
Part names (Transmitter) .....	6
Charging.....	7
Connecting the transmitter .....	8
• Connecting with the USB cable (USB input) .....	8
• Connecting an active subwoofer (optional) .....	10
Fit the unit .....	11
Wirelessly connecting the unit and the transmitter.....	11
• Turn on the unit .....	11
<b>Operation</b>	
Basic operations.....	12
• Adjusting the volume .....	12
• Enjoying sound field effects that suit the source (sound mode) .....	12
• Microphone muting .....	12
Changing the unit's settings .....	13
• Changing the volume of the other party in a chat (chat volume mode).....	13
• Adjusting the bass (Bass Level) .....	13
• Pairing the unit and the transmitter again.....	14
• Changing settings using the app for use in Windows (SOUNDSLAYER Engine) .....	14
<b>Other</b>	
Restore factory settings .....	15
Licenses .....	15
Troubleshooting.....	16
Software update .....	17
Specifications .....	18
When disposing of the product.....	20
• To remove the battery when disposing of this unit.....	20

## Expressions used in this document

- Pages to be referred to are indicated as “→ ○○”.
- The product illustrations may differ from the actual product.

## Accessories

Please check and identify the supplied accessories.

### **1 x Wireless Transmitter**

- Described as “transmitter” in this document.

### **1 x USB charging cord**

- Approx. 0.2 m

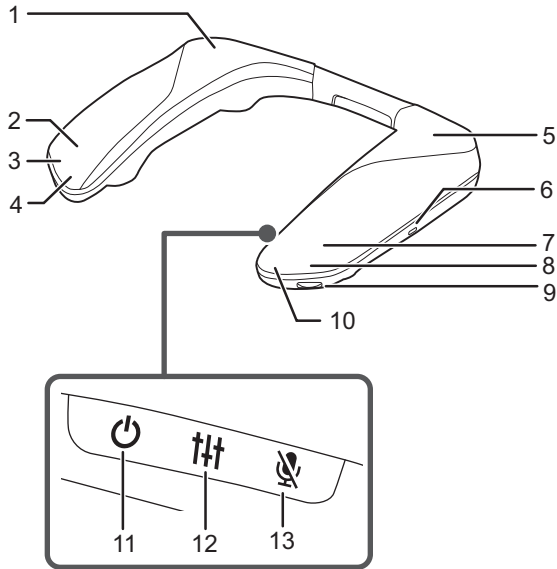
### **1 x USB cable (for use with the Wireless Transmitter)**

- Approx. 1.0 m

## Maintenance

- To clean the main unit, wipe with a soft, dry cloth.
- Never use alcohol, paint thinner or benzine to clean this system.
- Before using chemically treated cloth, read the instructions that came with the cloth carefully.

## Part names (Main unit)



- 1 Rear (R) speaker
- 2 Front (R) speaker
- 3 Operation indicator (R)
- 4 Microphone (R)
- 5 Rear (L) speaker
- 6 Charging terminal
- 7 Front (L) speaker
- 8 Operation indicator (L)
- 9 [VOL] dial (volume dial)
- 10 Microphone (L)
- 11 [⏻] button (standby button)
- 12 [🔊] button (sound mode button)
- 13 [🔇] button (microphone mute button)

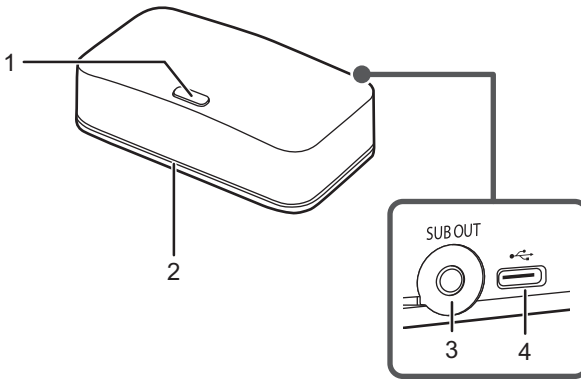
### Operation indicator lighting/blinking examples

Operation indicator (L)	Operation indicator (R)	State
Off	Lights (red)	Charging is in progress
Lights (cyan) <sup>*1*2</sup>	Lights (cyan) <sup>*1*2</sup>	Connected wirelessly
Off	Blinking slowly (cyan) <sup>*1</sup>	On standby for wireless connection
Off	Blinking rapidly (blue)	On standby for pairing (registration) for a wireless connection
Lights (red)	Lights (red)	Microphones muted

\*1 When only the operation indicator (R) is blinking (red), the battery is low. (→ 7, "Battery level notification")

\*2 If the "Lighting Settings" in the app for use in Windows (→ 14) are set to "OFF", the indicators turn off after about 3 seconds.

## Part names (Transmitter)



- 1 [-PAIRING] button (pairing button)
- 2 Operation indicator
- 3 Audio output terminal [SUB OUT]
- 4 USB port

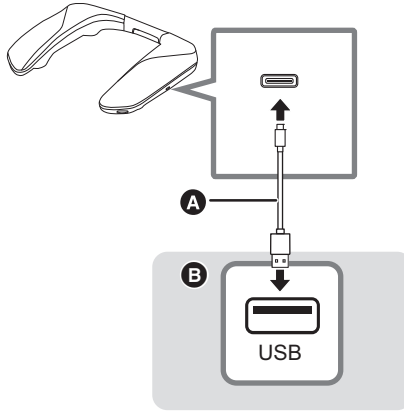
### Operation indicator lighting/blinking examples

Operation indicator	State
Lights (cyan)	Connected wirelessly
Blinking slowly (cyan)	On standby for wireless connection
Blinks (cyan)	On standby for pairing (registration) for a wireless connection
Lights (red)	Microphones muted

# Charging

The rechargeable battery (installed in the unit) is not charged initially. Charge the battery before using the unit.

- The operation indicator (R) lights (red) during charging and goes out when charging finishes.



**A** USB charging cord (supplied)

**B** USB AC adaptor, etc.

## ■ Charging time

### Approx. 4.0 hours

- When using a USB AC adaptor (optional) that is capable of supplying an output current of 1500 mA at 5 V DC
- Ambient temperature 25 °C/When recharging a fully discharged battery

## Note:

- When using a USB AC adaptor, etc., connect the USB cable first, then plug it into the mains socket.
- Charging may not be performed or may stop if the computer is in or switched to standby or sleep mode.
- Do not use any other USB charging cords except the supplied one. Doing so may cause malfunction.
- The built-in rechargeable battery may deteriorate if it is not used for long periods, so recharge once every 6 months.
- The volume reduces if you use the unit with the USB cable connected.

## ■ Battery level notification

- When the battery level drops to 20 %, the operation indicator (R) blinks (red) and an operation tone sounds.
- When you press and hold the [ ] button while the unit is on, you can see the remaining battery charge with the operation indicators.

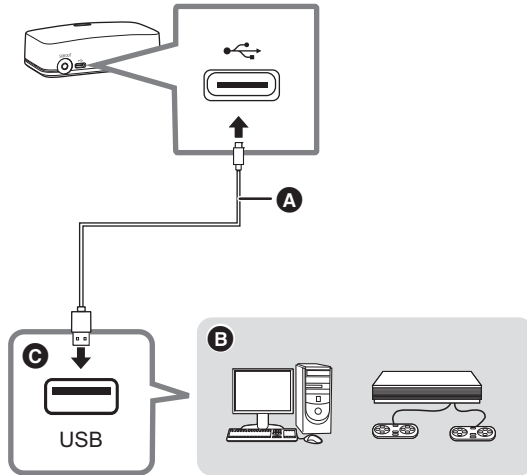
Remaining battery charge	Operation indicator (L)	Operation indicator (R)
71 % to 100 %	Lights (blue)	Lights (blue)
21 % to 70 %	Lights (blue)	Off
6 % to 20 %	Lights (red)	Off
5 % or less	Blinks (red)	Off

# Connecting the transmitter

## Connecting with the USB cable (USB input)

Connect to a device with a USB port (PC, PS4/PS5, Nintendo Switch etc.).

- Power is supplied from the USB port that the transmitter is connected to.
- First turn on the device to be connected, then connect the transmitter.
- The operation indicator of the transmitter lights (cyan) when there is a wireless connection with this unit and blinks (cyan) when there is no wireless connection with this unit.
- In order to properly use this unit, depending on the operating environment and OS, you need to change some sound settings on the computer. (→ 9, "When connecting to a PC")



- A** USB cable (supplied)
- B** Connected device
- C** USB port

### Note:

- Do not use any other USB cables except the supplied one. Doing so may cause malfunction.  
The shorter cable is specifically for recharging, and as such it cannot be used to connect with the transmitter.




**■ When connecting to a PC**

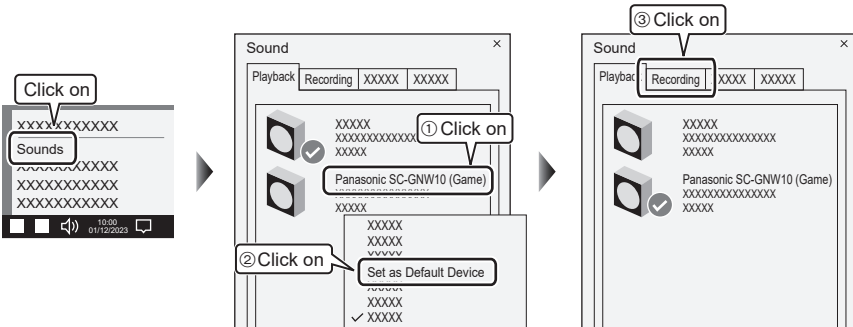
In order to properly use this unit, depending on the operating environment and OS, you need to change some sound settings on the computer. Two devices are shown when you connect the transmitter, so make the settings as follows:

**Make “Panasonic SC-GNW10 (Game)” the default device for “Playback”.**



- 1 Click the speaker icon in the task tray.
- 2 Click the “” at the top right of the volume bar.
- 3 Select “Panasonic SC-GNW10 (Game)”.

**Make “Panasonic SC-GNW10 (Game)” the default device for “Playback”,  
make “Panasonic SC-GNW10 (Chat)” the default device for “Recording”.**



- 1 Right-click the speaker icon in the task tray and select “Sounds”.
- 2 Click the “Playback” tab.
- 3 Right-click “Panasonic SC-GNW10 (Game)” and select “Set as Default Device”.
- 4 Click the “Recording” tab.
- 5 Right-click “Panasonic SC-GNW10 (Chat)” and select “Set as Default Device”.

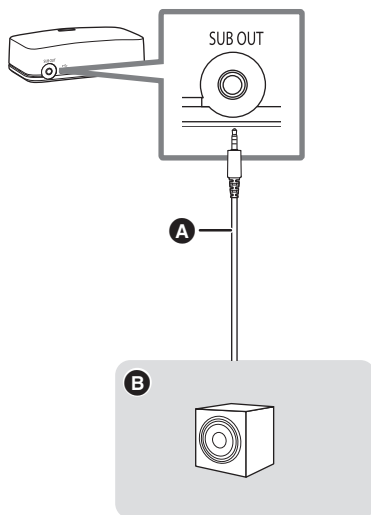
## Connecting an active subwoofer (optional)

The bass can be output from an active subwoofer by connecting an active subwoofer to the audio output terminal (SUB OUT) of the transmitter.

You will need an optional audio cable for this connection.

- As noise may occur, use an audio cable (optional) that is 3 m or shorter.
- Refer to the operating instructions of the active subwoofer for connection instructions.

Connection example:



**A** Audio cable (optional)

**B** Active subwoofer

## Fit the unit

Fit the unit by putting it around your shoulders, taking care of how it is positioned.



## Wirelessly connecting the unit and the transmitter

### Turn on the unit

Before turning on the unit, connect the transmitter and a device with the USB cable. (The operation indicator of the transmitter blinks (cyan) to indicate this state)

**Press and hold the [⏻] button for about 2 seconds until the operation indicator (R) blinks (cyan).**

The wireless connection between this unit and the transmitter starts.

When the wireless connection is completed, the unit and the transmitter are in the following states:

This unit	Operation indicator (L)	Lights (cyan) <sup>*1</sup>
	Operation indicator (R)	Lights (cyan) <sup>*1*2</sup>
Transmitter	Operation indicator	Lights (cyan)

\*1 If the "Lighting Settings" in the app for use in Windows are set to "OFF", the indicators turn off after about 3 seconds.

\*2 Blinks (red) when the battery level drops to 20 %.

### To turn the unit off

Press and hold the [⏻] button for about 2 seconds until the operation indicator (L) blinks 3 times.

- The operation indicator (L) turns off and the power of the unit turns off.

### Note:

- If the unit and the transmitter do not connect wirelessly, try pairing again. (→ 14)
- If the sound is distorted, turn down the volume.
- If there is an excessive input signal, the function of this unit may stop automatically and the power may be turned off for safety.
- When connected wirelessly, if there is no sound for 5 minutes or more, this unit automatically turns off. (Auto off function)
- The auto off function may not work in some cases when there is noise from other devices.
- The settings for the auto off function can be changed in the app for use in Windows. (→ 14) (Factory default: on)

# Basic operations

## Adjusting the volume

Adjust the volume.

### Turn the [VOL] dial.

- An operation tone sounds when you reach either the minimum volume or the maximum volume.

#### Note:

- The volume setting is maintained even when the power is turned off.

## Enjoying sound field effects that suit the source (sound mode)

You can enjoy sound field effects that suit the images on connected equipment by switching the sound mode. (Factory default: RPG)

### Press the [ ] button.

The voice prompt (English) announces the current mode when you press the [ ] button. (An operation tone sounds when the mode is switched to Custom1/2/3.)

The mode changes if you press the [ ] button again within 3 seconds of the announcement.

- The voice prompt (English) announces the mode you switched to.

<b>RPG</b>	Mode suited to RPG (role-playing games).
<b>FPS</b>	Mode suited to FPS (first-person shooter games).
<b>Voice</b>	Enhances voices. Mode that makes people's voices easier to hear.
<b>Cinema</b>	Enjoy sound with the spatial effects and power you would expect from a film.
<b>Music</b>	Enjoy sound with instruments and vocals enveloping you.
<b>Stereo</b>	Output is stereo.
<b>Custom1/2/3</b>	Can only be selected when registered in the app for use in Windows.

#### Note:

- The setting is maintained until it is changed again.
- You can also switch the sound mode using the app for use in Windows (→ 14).

## Microphone muting

Switches ON/OFF the microphone.

### Press the [ ] button.

The operation indicator (L) and operation indicator (R) of the unit and the operation indicator of the transmitter light (red) and the microphones are muted.

- Press again to cancel.

#### Note:


- Microphone muting is maintained even when the power is turned off.
- Microphone muting can be changed while the main unit and the transmitter are connected wirelessly.

# Changing the unit's settings

## Changing the volume of the other party in a chat (chat volume mode)

Adjust the audio output of the other party in a chat that is output from the speakers.

(Factory default: Unadjusted value (0 dB))

- 1 **While pressing the [  ] button, turn the [VOL] dial in the [+] direction until the operation indicators blink (blue).**
  - While in the chat volume mode, the operation indicator (L) and the operation indicator (R) each blinks (blue) three times repeatedly.
- 2 **While the unit is in the chat volume mode, turn the [VOL] dial to adjust (7 levels).**
  - Output increases when you turn in the [+] direction.
  - Output decreases when you turn in the [-] direction.
  - Operation tones are made at the maximum value (+3 dB), unadjusted value (0 dB), and minimum value (-3 dB).  
(The tone sounds twice when you reach the maximum value or the minimum value, and sounds once when there is no adjustment.)
- 3 **Press any button other than the [VOL] dial to complete the settings.**
  - The settings are also completed if the unit is left in the chat volume mode continuously for 10 seconds or more without any operations.


### Note:

- The setting is maintained until it is changed again.
- Adjustment is only possible when connected wirelessly.
- You can also switch the chat volume using the app for use in Windows (→ 14).

## Adjusting the bass (Bass Level)

Adjusts the volume of the bass that is output from the speakers.

(Factory default: level 3)

- 1 **While pressing the [  ] button, turn the [VOL] dial in the [-] direction until the operation indicators blink (blue).**
  - While in the bass level mode, the operation indicator (L) and the operation indicator (R) each blinks (blue) two times repeatedly.
- 2 **While the unit is in the bass level mode, turn the [VOL] dial to adjust (5 levels).**
  - The volume of the bass increases when you turn in the [+] direction.
  - The volume of the bass decreases when you turn in the [-] direction.
  - Operation tones are made at the maximum value (level 5), unadjusted value (level 3), and minimum value (level 1).  
(The tone sounds twice when you reach the maximum value or the minimum value, and sounds once when there is no adjustment.)
- 3 **Press any button other than the [VOL] dial to complete the settings.**
  - The settings are also completed if the unit is left in the bass level mode continuously for 10 seconds or more without any operations.

### Note:

- The setting is maintained until it is changed again.
- Adjustment is only possible when connected wirelessly.
- You can also switch the bass level using the app for use in Windows (→ 14).

## Pairing the unit and the transmitter again

If wireless connection between the unit and transmitter is not possible, wireless connection can be achieved by pairing the units again.

### 1 Press and hold the [-PAIRING] button on the transmitter.

- The operation indicator on the transmitter blinks rapidly (cyan).

Do the following procedure with the power of the unit off.

### 2 Press and hold the [⏻] button for about 6 seconds until the operation indicator (R) blinks (blue) rapidly.

- Wireless connection pairing between this unit and the transmitter starts.

When the wireless connection is completed, the unit and the transmitter are in the following states:

This unit	Operation indicator (L)	Lights (cyan)
	Operation indicator (R)	Lights (cyan)
Transmitter	Operation indicator	Lights (cyan)

## Changing settings using the app for use in Windows (SOUNDSLAYER Engine)

If the transmitter is connected to a PC, you can use the app for use in Windows to change the settings for this unit.

- Equalizer settings
- Adjusting speaker balance
- Turning off the operation indicators (lighting settings)
- Updating software
- etc.

Refer to the following website for details about the app:

<https://panasonic.jp/support/global/cs/audio/download/sse/>

(This site is in English only.)

## Restore factory settings

This is done when returning the unit to the state of purchase, such as by discarding or transferring the unit. To restore the factory settings, this unit and the transmitter need to be connected wirelessly.

- 1 Turn the [VOL] dial in the [–] direction until the volume reaches the minimum level [0].**
  - An operation tone is made when the volume reaches the minimum level [0].
- 2 Press and hold the [↑↑] and [🔊] buttons for about 5 seconds or more.**
  - An operation tone is made and the unit is in the factory settings mode.
  - When the unit enters the factory settings mode, the operation indicator (L) and the operation indicator (R) each blinks (blue) once every second.
- 3 Press the [🔊] button while the unit is in the factory settings mode.**
  - The settings are each initialised, returning to the factory settings.
  - The unit turns off.

---

### Note:

- The pairing information for the unit and the transmitter does not get deleted even when the factory settings are restored. (There is no need to pair the units again.)

## Licenses

SOUNDSLAYER is a trademark of Panasonic Holdings Corporation.

PS4 and PS5 are registered trademarks or trademarks of Sony Interactive Entertainment Inc.

Windows is a registered trademark or a trademark of Microsoft Corporation.

Nintendo Switch is a registered trademark or a trademark of Nintendo.

Other names of systems and products mentioned in these instructions are usually the registered trademarks or trademarks of the manufacturers who developed the system or product concerned.

Some <sup>TM</sup> and <sup>®</sup> marks are not specified in the text.

---

## Troubleshooting

Before requesting service, make the following checks. If you are in doubt about some of the check points, or if the solutions indicated do not solve the problem, consult your dealer for instructions.

### **There is no sound.**

- The USB port or plug may be dirty. Wipe the USB port and plug clean with a soft dry cloth.
  - The sound may have been muted or turned down low on the connected device. Adjust the volume on the connected device.
  - Make sure that "Panasonic SC-GNW10 (Game)" is selected as the audio output device on the connected device.
- 

### **The sound is low.**

- Also increase the volume on the other devices as well as this unit.
- 

### **There are interruptions to the sound. / Too much noise. / Poor sound quality.**

- Make sure the USB port is normal. If there are other USB ports on your computer, try using one of the other USB ports.
  - There may be a USB hub between the transmitter and the computer. If there are other USB ports on your computer, try using one of the other USB ports.
- 

### **The unit does not work.**

- Check if the unit is charged. (→ 7)
- 

### **The transmitter does not work.**

- Make sure the USB cable is firmly connected to the USB port of each device.
  - Make sure the USB port is normal. If there are other USB ports on your computer, try using one of the other USB ports.
  - If the power still does not come on even after performing the above, unplug the USB cable and then plug it in again.
- 

### **There is no surround effect.**

- Make sure that "Panasonic SC-GNW10 (Game)" is selected as the sound device on your PC.
- 

### **No output of chat audio.**

- Make sure that "Panasonic SC-GNW10 (Chat)" is selected as audio output device on your game, chat app, or meeting app, etc.
-



**Poor sound quality for chat audio.**

- Turn off the noise cancelling functions in the apps you are using for chat or meetings, then try again.
- 

**Low volume for chat audio.**

- Also increase the volume on the other devices as well as this unit.
- 

**There is no wireless connection between this unit and the transmitter.**

- Try pairing the unit and the transmitter again. (→ 14)
- 

**The transmitter is not detected when connected with the USB cable.**

- Try restarting the connected device.
- 

**I have changed the settings in the chat volume mode, but the speaker volume does not increase after the change.**

- This unit has a function that activates a control mechanism that suppresses the output when the volume is high. This is not a malfunction. Before making adjustments, lower the volume.
- 

## Software update

Occasionally, Panasonic may release updated software for this system that may add or improve the way a feature operates. These updates are available free of charge.

For more details, refer to the following website.

<https://panasonic.jp/support/global/cs/>

(This site is in English only.)

# Specifications

## Main Unit

### ■ General

<b>Power supply</b>	<p>USB Type C, DC 5 V (USB AC adaptor (optional) capable of supplying with an output current of 1500 mA); During USB charging</p> <p>USB Type C, DC 5 V (USB AC adaptor (optional) capable of supplying with an output current of 900 mA or more); When powered via USB<sup>*1</sup></p>
<b>Charging time</b>	<p>Approx. 4.0 hours</p> <ul style="list-style-type: none"> <li>• When using a USB AC adaptor (optional) that is capable of supplying an output current of 1500 mA at 5 V DC</li> <li>• Ambient temperature 25 °C/When recharging a fully discharged battery</li> </ul>
<b>Continuous playback time</b>	<p>Approx. 9.0 hours (Sound quality set to the factory settings, with a sound source stipulated by Panasonic, at Vol 8)</p>
<b>Dimensions (W × H × D)</b>	256 mm × 56 mm × 221 mm
<b>Mass</b>	Approx. 403 g
<b>Operating condition</b>	<p>Operating temperature range: 5 °C to 35 °C</p> <p>Operating humidity range: 20 %RH to 80 %RH (no condensation)</p>
<b>USB terminal</b>	USB Type C

### ■ Speaker section

<b>Front speaker (L/R), Rear speaker (L/R)</b>	<p>Full range speaker unit: Φ Approx. 38 mm Cone type 4 pcs</p> <p>Impedance: 4 Ω</p>
--	---

### ■ Amplifier section

<b>Total RMS output power (non-simultaneous drive)</b>	<p>8 W<sup>*2</sup> (1 kHz, T.H.D., 10.0 %, 4 Ω, 20 kHz LPF)</p>
--	--

### ■ Microphone section

<b>Microphone units</b>	MEMS type 2 pcs
-------------------------	-----------------

**Wireless Transmitter**

<b>Power supply</b>	USB Type C, DC 5 V 500 mA (Supplied with power from the USB port of the connected device)
<b>Dimensions (W × H × D)</b>	112 mm × 33 mm × 61 mm
<b>Mass</b>	Approx. 69 g
<b>USB port</b>	USB Type C
<b>Audio output terminal</b>	For connection to an active subwoofer (optional) 3.5 mm mini jack

**Common****■ Dedicated built-in wireless modules**

<b>Transmission system</b>	Other system
<b>Operating frequency range</b>	2.4 GHz band
<b>Line of sight communication distance</b>	Approx. 10 m

**■ Compatible equipment\*3**

PC, PS4/PS5, Nintendo Switch (TV mode)	
<b>PC compatible OS*4</b>	Windows 10/11

**■ Accessories\*5**

<b>USB cable</b>	Approx. 1.0 m (For Wireless Transmitter)
<b>USB charging cord</b>	Approx. 0.2 m

\*1 Operation may stop when supplied from a device that does not have the recommended power capacity (output current of 900 mA or more), but this does not indicate a malfunction.

\*2 The volume reduces if you use the unit with the USB AC adaptor connected.

\*3 Before connecting with other devices, be sure to read the operating instructions for each of the devices.

\*4 Operation is not guaranteed on all computers that are running the supported OSs.

\*5 An audio cable for connecting an active subwoofer (optional) is not supplied. As noise may occur, use an audio cable (optional) that is 3 m or shorter.

• Continuous playback time and charging time depend on the operating conditions and the surrounding environment.

• The Product Identification Markings are on the bases of the main unit and the transmitter.

• Specifications are subject to change without notice.

## When disposing of the product

The built-in batteries are a valuable recyclable resource. When disposing of this unit, rather than disposing of in general waste (non-combustible garbage), follow the local national laws and take to the appropriate collection point. Contact your local government organization if you are unsure of your local collection point.

- The unit may keep the user settings information in the unit. If you discard this unit either by disposal or transfer, then follow the procedure to return all the settings to the factory defaults to delete the user settings. (→ 15)

### To remove the battery when disposing of this unit

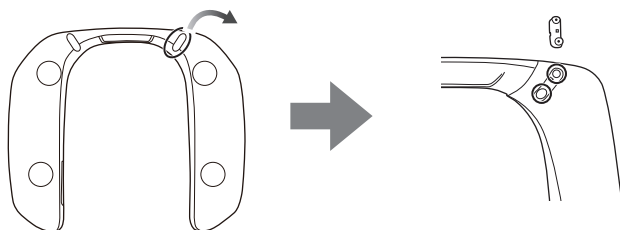
**The following instructions are not intended for repairing purposes but for the disposal of this unit. This unit is not restorable once disassembled.**

- **When disposing of this unit, take out the battery installed in this unit and recycle it.**

- Disassemble after the battery runs out.
- Keep disassembled parts out of reach of children.

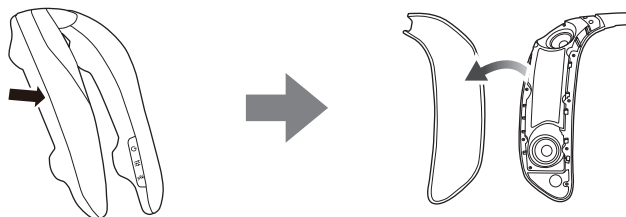
#### 1 Take off the cap (1) on the bottom of the unit, then unscrew the screws (2).

- Use a commercially available cross-head precision screwdriver to remove the screws.



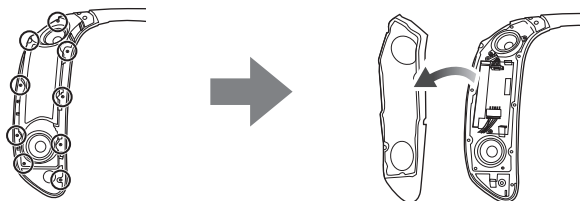
#### 2 Remove the covers on the top of the unit.

- Use a commercially available flat head screwdriver or similar to insert between the covers and the cabinet to lever off the covers.



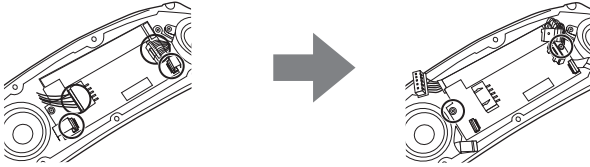
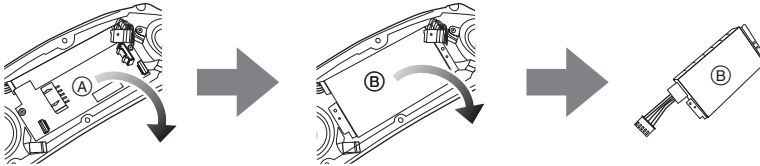
#### 3 Remove the screws (9) and then remove the internal covers.

- Use a commercially available cross-head precision screwdriver to remove the screws.

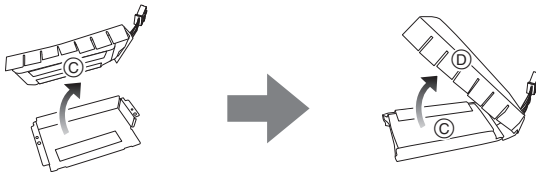


**4 Take off the connectors (4), then unscrew the screws (2).**

- Use a commercially available cross-head precision screwdriver to remove the screws.

**5 Remove the board (A) and take out the battery case (B).****6 Take the battery (C) out of the battery case.**

- The battery is attached to the battery case with double-sided tape.
- Remove the lid of the battery case (D) from the battery.

**Regarding the handling of used battery**

- Insulate the terminals with adhesive tape or similar material.
- Do not disassemble.

**Declaration of Conformity (DoC)**

Hereby, "Panasonic Entertainment & Communication Co., Ltd." declares that this product is in compliance with the essential requirements and other relevant provisions of Directive 2014/53/EU.

Customers can download a copy of the original DoC to our RE products from our DoC server:

<http://www.ptc.panasonic.eu>

Contact to Authorized Representative: Panasonic Marketing Europe GmbH,

Panasonic Testing Centre, Winsbergring 15, 22525 Hamburg, Germany

Type of wireless	Frequency band	Maximum power (dBm e.i.r.p)
Others	2404.35 - 2480.35 MHz	7.76 dBm

**UK Declaration of Conformity (DoC)**

Hereby, "Panasonic Entertainment & Communication Co., Ltd." declares that this product is in compliance with the essential requirements and other relevant provisions of the Radio Equipment Regulations 2017 No.1206.

Customers can download a copy of the original DoC to our RE products from our DoC server:

<https://www.ptc.panasonic.eu/compliance-documents>

Contact in the UK: Panasonic Testing Centre on behalf of Panasonic UK,

a branch of Panasonic Marketing Europe GmbH (Importer)

Maxis 2, Western Road, Bracknell, Berkshire, RG12 1RT

**Disposal of Old Equipment and Batteries****Only for European Union and countries with recycling systems**

These symbols on the products, packaging, and/or accompanying documents mean that used electrical and electronic products and batteries must not be mixed with general household waste. For proper treatment, recovery and recycling of old products and used batteries, please take them to applicable collection points in accordance with your national legislation.

By disposing of them correctly, you will help to save valuable resources and prevent any potential negative effects on human health and the environment.

For more information about collection and recycling, please contact your local authority. Penalties may be applicable for incorrect disposal of this waste, in accordance with national legislation.

**Note for the battery symbol (bottom symbol):**

This symbol might be used in combination with a chemical symbol. In this case it complies with the requirement set by the Directive for the chemical involved.

**For the United Kingdom and Ireland customers**

## Sales and Support Information

### Customer Communications Centre

- For customers within the UK: 0344 844 3899
- For customers within Ireland: 01 289 8333
- Monday–Friday 9:00 am–5:00 pm (Excluding public holidays).
- For further support on your product, please visit our website:  
[www.panasonic.co.uk](http://www.panasonic.co.uk)

### Direct Sales at Panasonic UK

- Order accessory and consumable items for your product with ease and confidence by phoning our Customer Communications Centre Monday–Friday 9:00 am–5:00 pm (Excluding public holidays).
- Or go on line through our Internet Accessory ordering application at [www.pas-europe.com](http://www.pas-europe.com).
- Most major credit and debit cards accepted.
- All enquiries transactions and distribution facilities are provided directly by Panasonic UK.
- It couldn't be simpler!
- Also available through our Internet is direct shopping for a wide range of finished products. Take a browse on our website for further details.

### Manufactured by:

Panasonic Entertainment & Communication Co., Ltd.  
1-10-12, Yagumo-higashi-machi, Moriguchi City, Osaka, Japan

### Importer for UK:

Panasonic UK, a branch of Panasonic Marketing Europe GmbH  
Maxis 2, Western Road, Bracknell, Berkshire, RG12 1RT

### Authorized Representative in EU:

Panasonic Marketing Europe GmbH  
Panasonic Testing Centre  
Winsbergring 15, 22525 Hamburg, Germany



---

Panasonic Entertainment & Communication Co., Ltd.

<https://www.panasonic.com>

(En)

TQBS0511  
F1023TN0